

UNLESS OTHERWISE NOTED TOLERANCES ARE:
 DIMENSIONS ARE IN INCHES
 ONE PLACE DECIMALS ±.1[2.5] THREE PLACE DECIMALS ±.005[.13]
 TWO PLACE DECIMALS ±.01[.3] FOUR PLACE DECIMALS ±.0020[.051]

TITLE:
**2mm x 2mm
 TERMINAL STRIP ASSEMBLY**

DWG NO:
 TMMH-1XX-XX-XX-X-XX-XX-XXX
 SHEET 2 OF 2

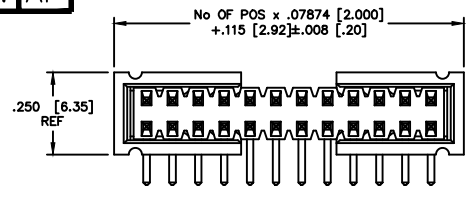


FIG. 2
 -ES

STYLE	TAIL	"A"	"B"	"C"	SHROUD
-01	-RA	.202 [5.13]	.260 [6.60]	.092 [2.35]	TMMH-ES-01
-04	-RA	.149 [3.78]	.207 [5.26]	.103 [2.62]	TMMH-ES-04
-05	-RA	.149 [3.78]	.207 [5.26]	.123 [3.12]	TMMH-ES-04

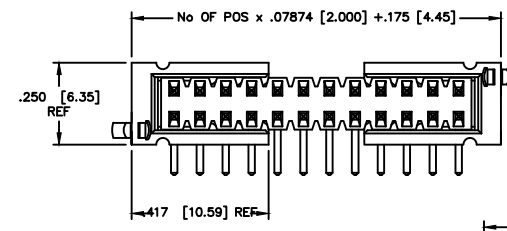
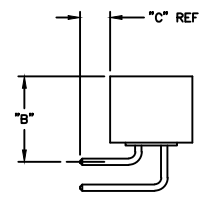
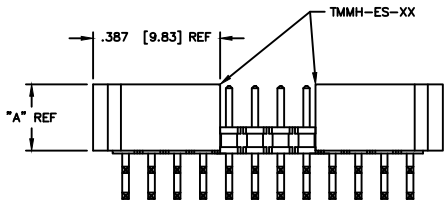


FIG. 3
 -EL

STYLE	TAIL	"A"	"B"	"C"	SHROUD
-01	-RA	.202 [5.13]	.260 [6.60]	.092 [2.35]	TMMH-EL-01
-04	-RA	.149 [3.78]	.207 [5.26]	.103 [2.62]	TMMH-EL-04
-05	-RA	.149 [3.78]	.207 [5.26]	.123 [3.12]	TMMH-EL-04

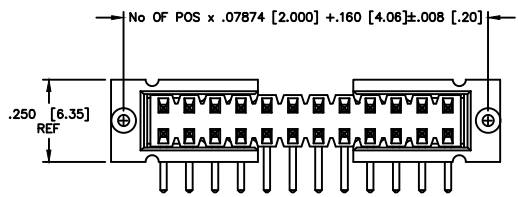
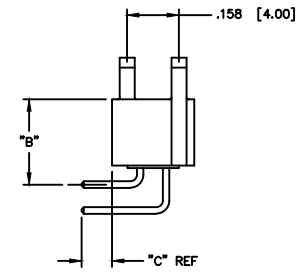
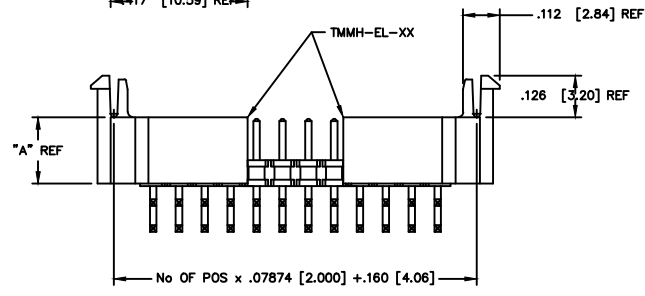


FIG. 4
 -EP

STYLE	TAIL	"A"	"B"	"C"	"D"	SHROUD
-01	-RA	.202 [5.13]	.260 [6.60]	.092 [2.35]	.175 [4.45]	TMMH-EP-01
-04	-RA	.149 [3.78]	.207 [5.26]	.103 [2.62]	.119 [3.02]	TMMH-EP-04
-05	-RA	.149 [3.78]	.207 [5.26]	.123 [3.12]	.119 [3.02]	TMMH-EP-04

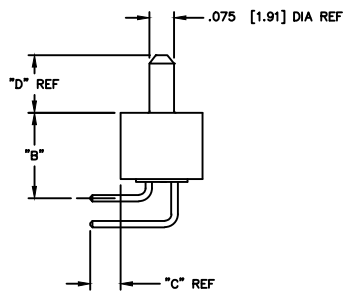
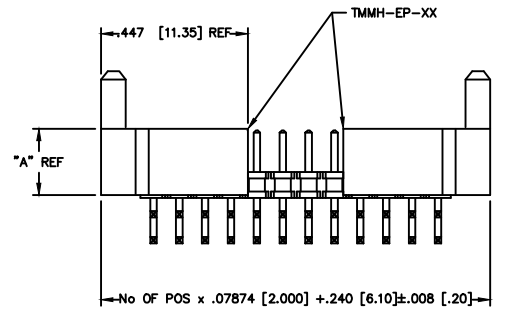
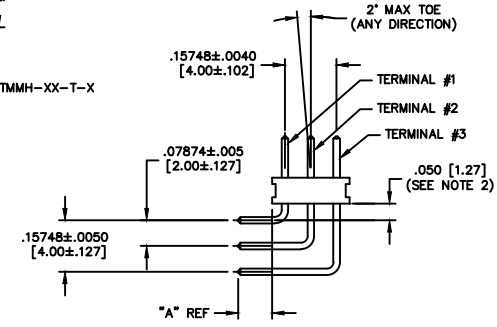
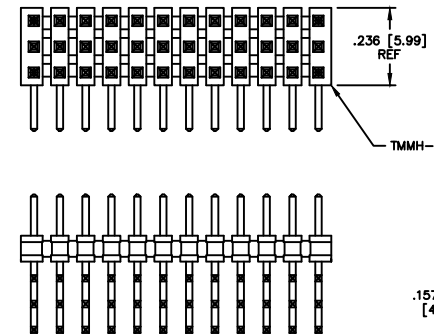
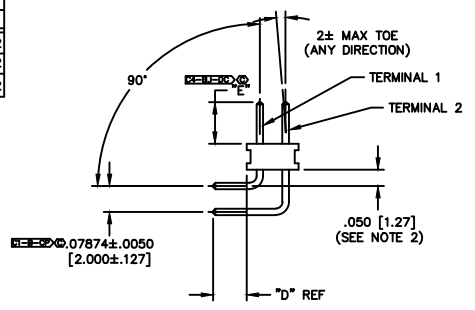


FIG. 5
 TRIPLE ROW -RA



STYLE	"D"	"E"	TERMINAL #1	TERMINAL #2
-01	.139 [3.53]	.126 [3.20]	T-1S13-19-XX-2	T-1S13-22-XX-2
-04	.150 [3.81]	.075 [1.91]	T-1S13-02-XX-2	T-1S13-03-XX-2
-05	.160 [4.06]	.065 [1.65]	T-1S13-02-XX-2	T-1S13-03-XX-2

IN-PROCESS FOR -ES, -EP, & -EL OPTIONS



ALL FIGURES
 DIFFERENT AS SHOWN,
 OTHERWISE SAME AS FIG. 1
PATENT PENDING

CRITICAL DIMENSION INSPECTION INSTRUCTION TABLE	
ASSEMBLY OPERATION	IN-PROCESS INSPECTION
FILL	C2, C4
RA	C1
CPCs INTENTIONALLY DELETED: C3	

EXSPROD\ASSEMBLY\2MM TMMH-RA2

520 PARK EAST BLVD. NEW ALBANY, INDIANA 47150
 PHONE (812) 944-6733 P.O. BOX 1147
 CODE 55322

MADE BY: PURVIS 12-17-96 TMMH-1XX-XX-XX-X-XX-XX-XXX
 SHEET 2 OF 2

PROPRIETARY NOTE
 THIS DOCUMENT CONTAINS INFORMATION CONFIDENTIAL AND PROPRIETARY TO SAMTEC INC. AND SHALL NOT BE REPRODUCED OR TRANSMITTED TO OTHERS OR USED FOR ANY PURPOSE OTHER THAN THAT FOR WHICH IT WAS OBTAINED WITHOUT THE EXPRESS WRITTEN CONSENT OF SAMTEC INC.

DO NOT SCALE FROM THIS PRINT