

Light is OSRAM

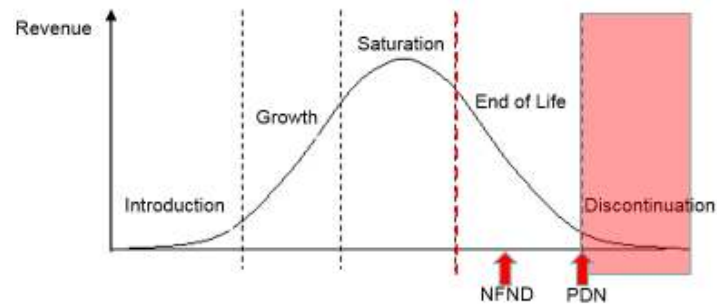
Product Discontinuation (acc. JEDEC J-STD-048)  
OS-PD-2018-019

15-Feb-2018

---

<b>Last order:</b>	15-Aug-2018
<b>Last delivery:</b>	15-Feb-2019
<b>Reason:</b>	Consolidation Product Portfolio

---



Please direct your feedback to your local Sales office.

DISCONTINUED				NEW (REPLACEMENT)			
Device	Ordering Code	Function	Brand	Device	Datasheet Ordering Code	Function	Brand
LUW JNSH.PC-BTCP-5C8E-1-20-R18	Q65111A3662	LED	DURIS E3	GW JCLPS2.EM-HPHR-A131-1-65-R33	Q65112A3766	LED	DURIS E3
LUW JNSH.PC-BUCQ-5C8E-1-20-R18	Q65111A4096	LED	DURIS E3	GW JCLPS2.EM-HPHR-A131-1-65-R33	Q65112A3766	LED	DURIS E3
LUW JNSH.PC-BUCQ-5E8G-1-20-R18	Q65111A4624	LED	DURIS E3	GW JCLPS2.EM-HPHR-A232-1-65-R33	Q65112A4637	LED	DURIS E3
LUW JNSH.PC-CPCR-5C8E-1-20-R18	Q65111A5731	LED	DURIS E3	GW JCLPS2.EM-HPHR-A131-1-65-R33	Q65112A3766	LED	DURIS E3
LUW JNSH.PC-CPCR-5E8G-1-20-R18	Q65111A5730	LED	DURIS E3	GW JCLPS2.EM-HPHR-A232-1-65-R33	Q65112A4637	LED	DURIS E3
LUW JNSH.PC-BTCP-5C8D-1-20-R18-XX	Q65111A6699	LED	DURIS E3	No direct Q# replacement.Kindly refer to standard Q#.			
LUW JNSH.PC-BUCQ-6D8E-1-20-R18-XX	Q65111A9975	LED	DURIS E3	No direct Q# replacement.Kindly refer to standard Q#.			
LUW JNSH.PC-CPCQ-6D7E-L1M1-1-20-R18-XX	Q65112A3334	LED	DURIS E3	No direct Q# replacement.Kindly refer to standard Q#.			

## *Products Affected by Product Discontinuation Notification*

**Number:** OS-PD-2018-019

**Name:** Discontinuation due to Consolidation of Product Portfolio

**Release Date:** 2/15/2018

**Last Order:** 8/15/2018

**Last Delivery:** 2/15/2019

### *DISCONTINUED*

### *NEW (REPLACEMENT)*

<i>Product</i>	<i>QNumber</i>	<i>QNumber Description</i>	<i>Part Number</i>	<i>Product</i>	<i>QNumber</i>	<i>QNumber Description</i>	<i>Part Number</i>
LUW JNSH.P	Q65111A3662	LUW JNSH.PC-BTCP-5C8E-1-20-R18	LUW JNSH.PC-BTCP-5C8E-1	GW JCLPS2.	Q65112A3766	GW JCLPS2.EM-HPHR-A131-1-65-R33	
LUW JNSH.P	Q65111A4096	LUW JNSH.PC-BUCQ-5C8E-1-20-R18	LUW JNSH.PC-BUCQ-5C8E-1	GW JCLPS2.	Q65112A3766	GW JCLPS2.EM-HPHR-A131-1-65-R33	
LUW JNSH.P	Q65111A4624	LUW JNSH.PC-BUCQ-5E8G-1-20-R18	LUW JNSH.PC-BUCQ-5E8G-1	GW JCLPS2.	Q65112A4637	GW JCLPS2.EM-HPHR-A232-1-65-R33	
LUW JNSH.P	Q65111A5730	LUW JNSH.PC-CPCR-5E8G-1-20-R18	LUW JNSH.PC-CPCR-5E8G-1	GW JCLPS2.	Q65112A4637	GW JCLPS2.EM-HPHR-A232-1-65-R33	
LUW JNSH.P	Q65111A5731	LUW JNSH.PC-CPCR-5C8E-1-20-R18	LUW JNSH.PC-CPCR-5C8E-1	GW JCLPS2.	Q65112A3766	GW JCLPS2.EM-HPHR-A131-1-65-R33	
LUW JNSH.P	Q65111A6699	LUW JNSH.PC-BTCP-5C8D-1-20-R18-XX	LUW JNSH.PC-BTCP-5C8D-1-XX	No direct Q#		No direct Q# replacement. Kindly refer to stan	
LUW JNSH.P	Q65111A9975	LUW JNSH.PC-BUCQ-6D8E-1-20-R18-XX	LUW JNSH.PC-BUCQ-6D8E-1-XX	No direct Q#		No direct Q# replacement. Kindly refer to stan	
LUW JNSH.P	Q65112A3334	LUW JNSH.PC-CPCQ-6D7E-L1M1-1-20-R18-		No direct Q#		No direct Q# replacement. Kindly refer to stan	