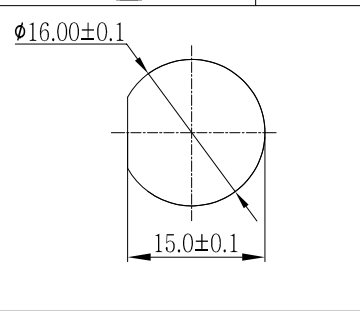
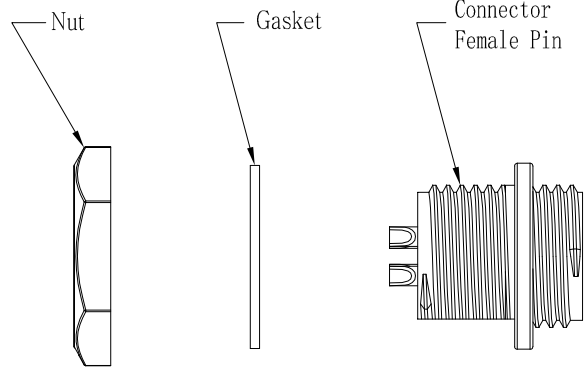
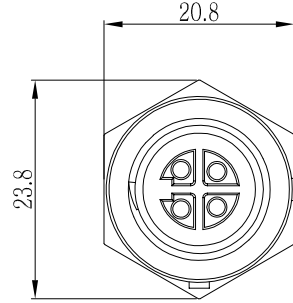
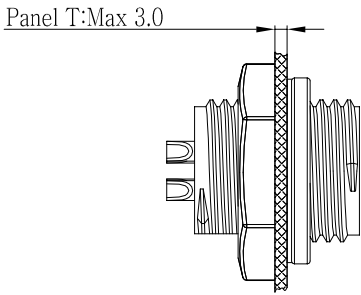
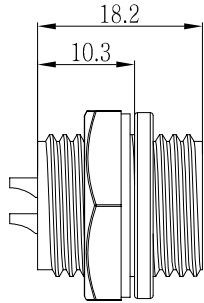


THIS INFORMATION IS CONFIDENTIAL AND IS DISCLOSED TO YOU ON CONDITION THAT NO FURTHER DISCLOSURE IS MADE BY YOU TO OTHER THAN CHOGORI PERSONNEL WITHOUT AUTHORIZATION FROM CHOGORI CORP.

REV.	ECN NO.	DESCRIPTION	SIGN	DATE
C1	N/A	INITIAL DRAWING	Yumer	2020/05/13

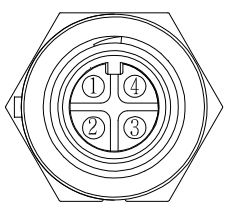


Recommended Panel Cut-Out



22XXX615-03

Pin Number

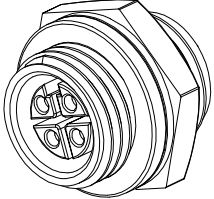


4 Pin

P/N: 22004615-03

Pin Assignments  
Front View

- Specification:
1. Operation Temperature:  $-45^{\circ}\text{C} \sim 105^{\circ}\text{C}$ .
  2. Insulation Resistance:  $100\text{M}\Omega$  at DC500V.
  3. Contact Resistance:  $<10\text{m}\Omega$ .
  4. Withstand Voltage: 1500V AC
  5. Operating Current: 10A
  6. Operating Voltage: AC 125V
  7. Waterproof Rate: IP67 (Mated)
  8. Connector: Nylon, Black
  9. Female Pin: Copper Alloy, Gold Plated
  10. Gasket: Silicon Gray
  11. Panel Nut: Nylon, Black
  12. Torque Rate:  $0.8 \sim 1.0\text{N} \cdot \text{m}$
  13. RoHS Compliant.
  14. UL Compliant.
  15. Mating Cap P/N: 806-00030-00



UNIT:mm	
TOLERANCE	
.X	$\pm 0.25$
.XX	$\pm 0.15$
.XXX	$\pm 0.05$
ANGLES	$\pm 1^{\circ}$

DESCRIPTION		Standard Series Screw Rear Mount With Female Pin	
SCALE:	1:1	SHEET	1 OF 1
REV.	C1	SIZE	A4
* :Inspection Item			



PART NO	22XXX615-03	DRAWN BY	Yumer	DATE	2020/05/13
DWG NO		CHECKED BY	Ivan	DATE	2020/05/13
CUSTOMER		APPROVED BY	Panson	DATE	2020/05/13