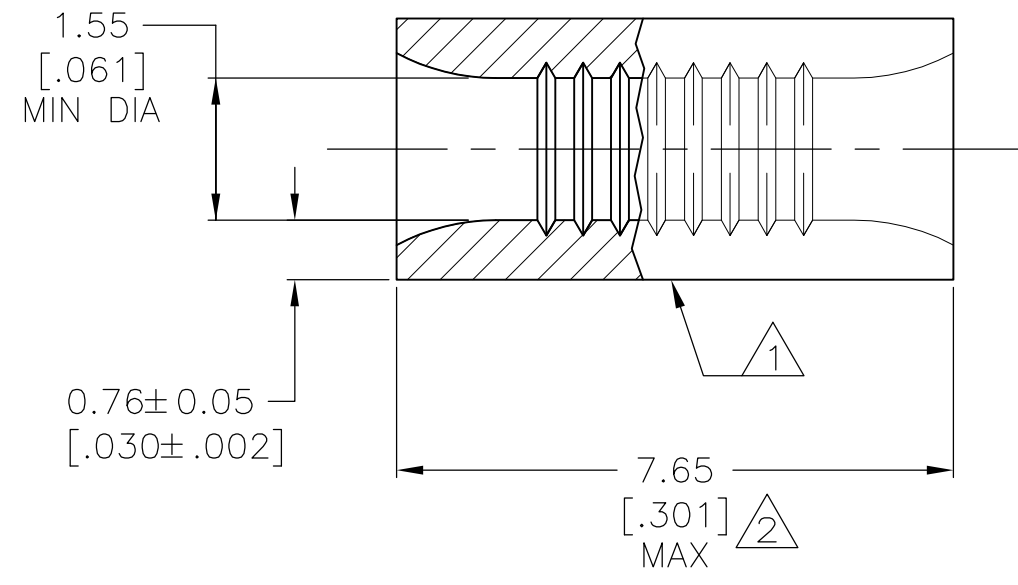
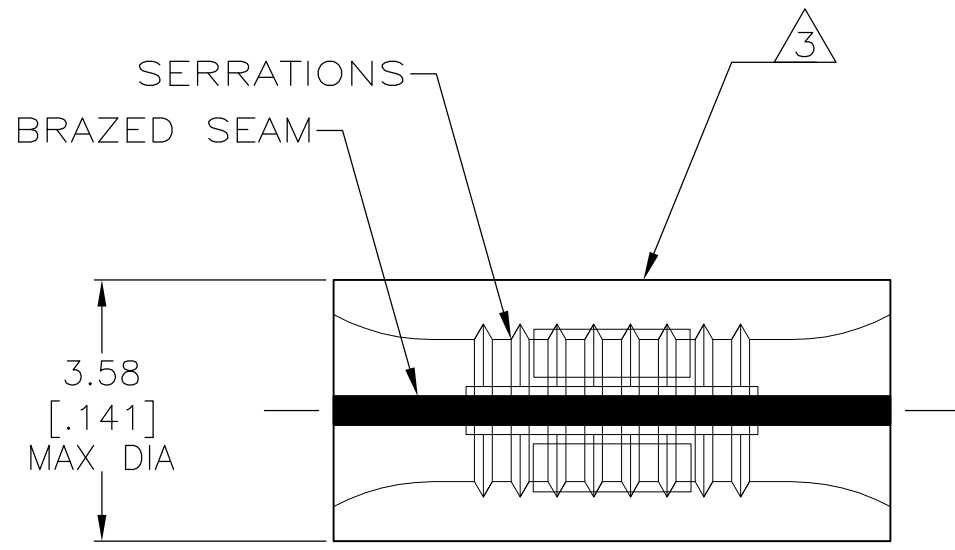


THIS DRAWING IS UNPUBLISHED. RELEASED FOR PUBLICATION  
 © COPYRIGHT - By - ALL RIGHTS RESERVED.

LOC	DIST	REVISIONS					
G	14	P	LTR	DESCRIPTION	DATE	DWN	APVD
			H3	REVISED PER ECO-14-019230	02APR2015	NK	DR



<b>AMP</b> WIRE RANGE	E13288 Listed
22-16 AWG SOLID OR STRANDED	NOT APPLICABLE
LR7189 Certified	MILITARY P/N AND CLASS
NOT APPLICABLE	NOT APPLICABLE

- ① STAMP AMP 22-18 APPROX AS SHOWN 22-16 SPLICES ARE STAMPED WITH 22-18 IN ACCORDANCE WITH MILITARY SPEC MIL-T-7928 COMMERCIAL WIRE RANGE IS 22-16.
- ② MAXIMUM LENGTH DOES NOT INCLUDE MANUFACTURING TABS.
- ③ WIRE BARREL COLOR CODED ORANGE TO DENOTE NICKEL MATERIAL.

REQD	322326
③ COLOR CODING	PART NUMBER

**AMP INCORPORATED  
CUSTOMER SERVICE SYSTEMS**

FOR ADDITIONAL PRODUCT INFORMATION OR COPIES OF DRAWINGS AND TECHNICAL DOCUMENTS	PRODUCT INFORMATION CENTER 1-800-522-6752	RECOMMENDED OPERATING TEMPERATURE: 649° C MAX
FOR APPLICATION TOOLING INFORMATION	TOOLING ASSISTANCE CENTER 1-800-722-1111	VOLTAGE RATING: NOT APPLICABLE
FOR ORDER ENTRY	1-800-526-5142	WIRE CROSS SECTIONAL AREA RANGE: 0.26-1.65mm <sup>2</sup> [509-3,250] CIR MILS SOLID OR STRANDED

THIS DRAWING IS A CONTROLLED DOCUMENT.

DIMENSIONS: mm [INCHES]	TOLERANCES UNLESS OTHERWISE SPECIFIED:
	0 PLC ± - 1 PLC ± - 2 PLC ± - 3 PLC ± - 4 PLC ± - ANGLES ± -
MATERIAL NICKEL PER ASTM B-162 ANNEALED	FINISH -

DWN DK SCHRUM 14NOV96	NAME <b>STE</b> TE Connectivity SPLICE, PARALLEL, HIGH TEMPERATURE, STRATO - THERM™	SIZE	CAGE CODE	DRAWING NO	RESTRICTED TO	
CHK MJ SPICER 19NOV96		A3	00779	C-322326	-	
APVD JL MECKLEY 19NOV96		SCALE	10:1	SHEET	1 OF 1	REV H3
PRODUCT SPEC -		CUSTOMER DRAWING				