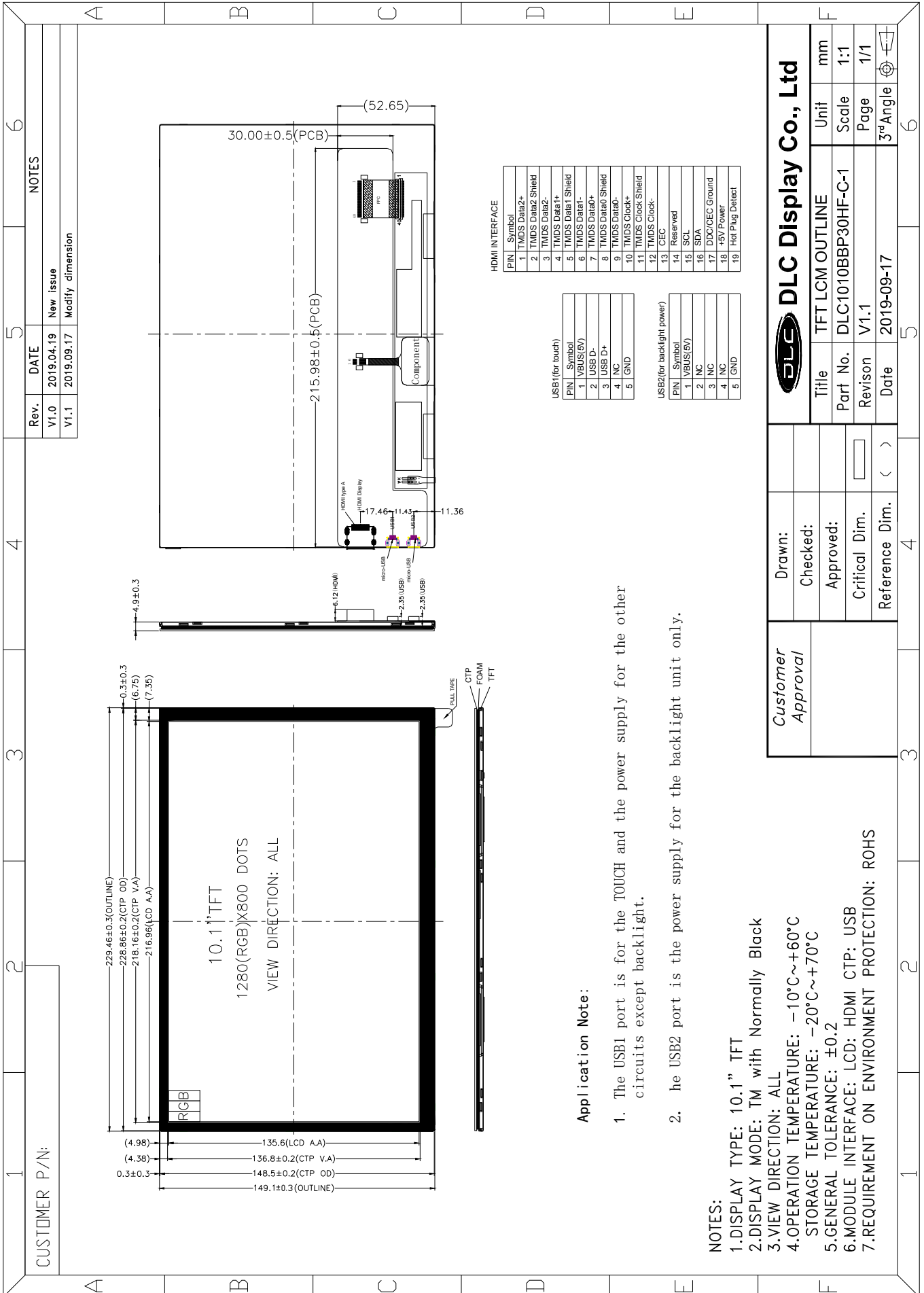




Outline Drawing



Rev.	DATE	Notes
V1.0	2019.04.19	New issue
V1.1	2019.09.17	Modify dimension

HDMI INTERFACE

PIN	Symbol
1	TMDS Data2+
2	TMDS Data2 Shield
3	TMDS Data2-
4	TMDS Data1+
5	TMDS Data1 Shield
6	TMDS Data1-
7	TMDS Data0+
8	TMDS Data0 Shield
9	TMDS Data0-
10	TMDS Clock+
11	TMDS Clock Shield
12	TMDS Clock-
13	CEC
14	Reserved
15	SCL
16	SDA
17	DDC/CEC Ground
18	+5V Power
19	Hot Plug Detect

USB1 (for touch)

PIN	Symbol
1	VBUS(SV)
2	USED-
3	USE D+
4	NC
5	GND

USB2 (for backlight power)

PIN	Symbol
1	VBUS(SV)
2	NC
3	NC
4	NC
5	GND

- Application Note:**
- The USB1 port is for the TOUCH and the power supply for the other circuits except backlight.
 - The USB2 port is the power supply for the backlight unit only.

- NOTES:**
- DISPLAY TYPE: 10.1" TFT
 - DISPLAY MODE: TM with Normally Black
 - VIEW DIRECTION: ALL
 - OPERATION TEMPERATURE: -10°C~+60°C
STORAGE TEMPERATURE: -20°C~+70°C
 - GENERAL TOLERANCE: ±0.2
 - MODULE INTERFACE: LCD: HDMI CTP: USB
 - REQUIREMENT ON ENVIRONMENT PROTECTION: ROHS

	DLC Display Co., Ltd		
	Title	TFT LCM OUTLINE	
	Part No.	DLC1010BBP30HF-C-1	
	Revision	V1.1	
Customer Approval	Drawn:	Unit	mm
	Checked:	Scale	1:1
	Approved:	Page	1/1
	Critical Dim.	Reference Dim.	3rd Angle
		Date	2019-09-17