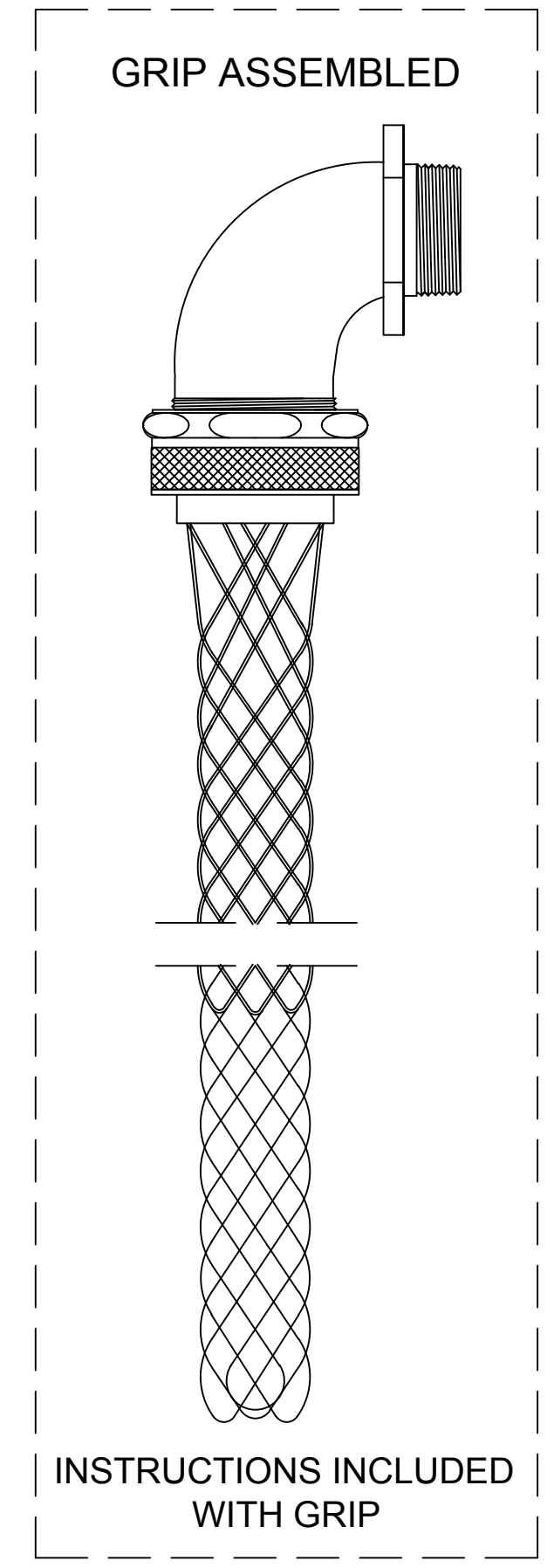
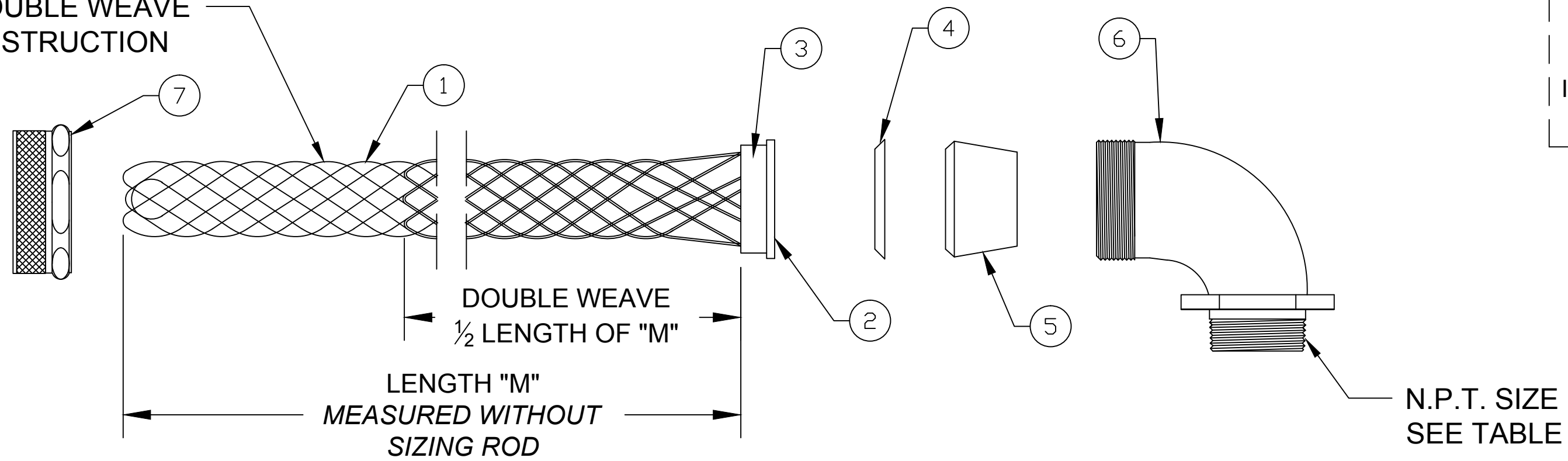


CATALOG NUMBER	MATERIAL NUMBER	CABLE RANGE	LENGTH "M"	N.P.T. FITTING SIZE	FORM SIZE	UL LISTED	CSA APPROVED	PRODUCT SELECTION NUMBER
36831	1300970297	.750-.875 / 19.05-22.23	9.500±1.000 / 241.30±25.40	1-1/4	5	---	☞	PG1014-90
36361	1300970221	.875-1.000 / 22.23-25.40	8.625±1.000 / 219.08±25.40			☞	☞	PG1016-90
36362	1300970222	1.000-1.125 / 25.40-28.58	9.000±1.000 / 228.60±25.40			☞	☞	PG1018-90
36363	1300970223	1.125-1.250 / 28.58-31.75	10.000±1.000 / 254.00±25.40			☞	☞	PG1020-90
36364	1300970224	1.250-1.375 / 31.75-34.925	12.000±1.000 / 304.80±25.40			☞	☞	PG1022-90
36469	-----	.750-.875 / 19.05-22.23	9.500±1.000 / 241.30±25.40	1-1/2	5	---	☞	PG1214-90
36470	1300970231	.875-1.000 / 22.23-25.40	8.625±1.000 / 219.08±25.40			☞	☞	PG1216-90
36471	1300970232	1.000-1.125 / 25.40-28.58	9.000±1.000 / 228.60±25.40			☞	☞	PG1218-90
36472	1300970233	1.125-1.250 / 28.58-31.75	10.000±1.000 / 254.00±25.40			☞	☞	PG1220-90
36473	1300970234	1.250-1.375 / 31.75-34.925	12.000±1.000 / 304.80±25.40			☞	☞	PG1222-90
36834	-----	1.250-1.375 / 31.75-34.925	12.000±1.000 / 304.80±25.40	2	6	---	☞	PG1622-90
36835	-----	1.312-1.437 / 33.32-36.50	12.000±1.000 / 304.80±25.40			---	☞	PG1624-90
36497	1300970252	1.437-1.562 / 36.50-39.67	13.125±1.000 / 333.38±25.40			---	☞	PG1625-90
36498	1300970253	1.562-1.687 / 39.67-42.85	15.750±1.500 / 398.78±38.10			---	☞	PG1626-90
36499	1300970254	1.687-1.812 / 42.85-46.02	16.250±1.500 / 412.75±38.10			---	☞	PG1628-90
36500	1300970255	1.750-1.875 / 44.45-47.63	16.250±1.500 / 412.75±38.10			---	☞	PG1630-90



SINGLE/DOUBLE WEAVE MESH CONSTRUCTION



ITEM	DESCRIPTION	MATERIAL
1	WIRE MESH	STAINLESS STEEL
2	INNER RING	ALUMINUM
3	OUTER RING	ALUMINUM
4	FRICTION RING	ZINC PLATED STEEL
5	GROMMET	RUBBER
6	THREADED BODY	ALUMINUM
7	COMPRESSION NUT	ALUMINUM

RELEASE SALES DRAWING EC NO.: IFCG2014-2037 DRWN: HRUIZ01 2014/10/16 CHKD: HKNEELAN 2014/10/16 APPR: JFMURPHY 2016/05/04	QUALITY SYMBOL ▽=0 ▽=0	GENERAL TOLERANCES (UNLESS SPECIFIED) <table border="1"> <tr> <td></td> <td>mm</td> <td>INCH</td> </tr> <tr> <td>4 PLACES</td> <td>±---</td> <td>±---</td> </tr> <tr> <td>3 PLACES</td> <td>±---</td> <td>±.005</td> </tr> <tr> <td>2 PLACES</td> <td>±.13</td> <td>±.010</td> </tr> <tr> <td>1 PLACE</td> <td>±.25</td> <td>±.020</td> </tr> </table>		mm	INCH	4 PLACES	±---	±---	3 PLACES	±---	±.005	2 PLACES	±.13	±.010	1 PLACE	±.25	±.020	DIMENSION STYLE INCH/MM DRAWN BY: HRUIZ01 DATE: 2014/10/16 CHECKED BY: HKNEELAN DATE: 2014/10/16 APPROVED BY: JFMURPHY DATE: 2016/05/04	SCALE NTS DESIGN UNITS INCH THIRD ANGLE PROJECTION	TITLE <b>STRAIN RELIEF DELUXE 90 DEGREE MALE 1-1/4" TO 2" N.P.T.</b> <b>MOLEX INCORPORATED</b> MATERIAL NO. SEE TABLE DOCUMENT NO. SD-130097-109 SHEET NO. 1 OF 1
		mm	INCH																	
	4 PLACES	±---	±---																	
	3 PLACES	±---	±.005																	
2 PLACES	±.13	±.010																		
1 PLACE	±.25	±.020																		
DRAFT WHERE APPLICABLE MUST REMAIN WITHIN DIMENSIONS		ANGULAR ±1/2°		THIS DRAWING CONTAINS INFORMATION THAT IS PROPRIETARY TO MOLEX INCORPORATED AND SHOULD NOT BE USED WITHOUT WRITTEN PERMISSION																
SIZE C																				