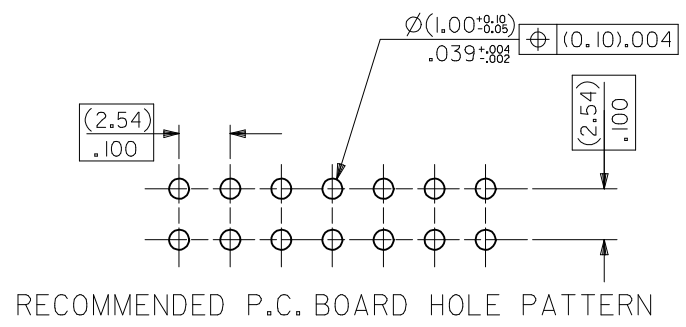
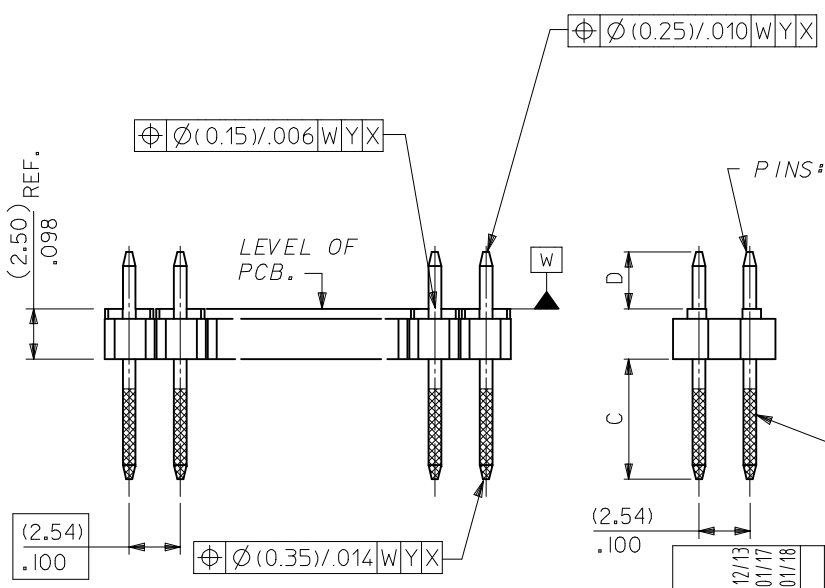


WAFER: 15% GLASS FILLED POLYESTER TO UL 94V-0. COLOUR: BLACK.

CKT SIZE	DIM. "A"		DIM. "B" (+0.20 / -0.008)		CKT SIZE	DIM. "A"		DIM. "B" (+0.20 / -0.008)	
2X 1			(2.54)	.100	2X21	(50.80)	2.000	(53.34)	2.100
2X 2	(2.54)	.100	(5.08)	.200	2X22	(53.34)	2.100	(55.88)	2.200
2X 3	(5.08)	.200	(7.62)	.300	2X23	(55.88)	2.200	(58.42)	2.300
2X 4	(7.62)	.300	(10.16)	.400	2X24	(58.42)	2.300	(60.96)	2.400
2X 5	(10.16)	.400	(12.70)	.500	2X25	(60.96)	2.400	(63.50)	2.500
2X 6	(12.70)	.500	(15.24)	.600	2X26	(63.50)	2.500	(66.04)	2.600
2X 7	(15.24)	.600	(17.78)	.700	2X27	(66.04)	2.600	(68.58)	2.700
2X 8	(17.78)	.700	(20.32)	.800	2X28	(68.58)	2.700	(71.12)	2.800
2X 9	(20.32)	.800	(22.86)	.900	2X29	(71.12)	2.800	(73.66)	2.900
2X10	(22.86)	.900	(25.40)	1.000	2X30	(73.66)	2.900	(76.20)	3.000
2X11	(25.40)	1.000	(27.94)	1.100	2X31	(76.20)	3.000	(78.74)	3.100
2X12	(27.94)	1.100	(30.48)	1.200	2X32	(78.74)	3.100	(81.28)	3.200
2X13	(30.48)	1.200	(33.02)	1.300	2X33	(81.28)	3.200	(83.82)	3.300
2X14	(33.02)	1.300	(35.56)	1.400	2X34	(83.82)	3.300	(86.36)	3.400
2X15	(35.56)	1.400	(38.10)	1.500	2X35	(86.36)	3.400	(88.90)	3.500
2X16	(38.10)	1.500	(40.64)	1.600	2X36	(88.90)	3.500	(91.44)	3.600
2X17	(40.64)	1.600	(43.18)	1.700	2X37	(91.44)	3.600	(93.98)	3.700
2X18	(43.18)	1.700	(45.72)	1.800	2X38	(93.98)	3.700	(96.52)	3.800
2X19	(45.72)	1.800	(48.26)	1.900	2X39	(96.52)	3.800	(99.06)	3.900
2X20	(48.26)	1.900	(50.80)	2.000	2X40	(99.06)	3.900	(101.60)	4.000



- NOTES
- PLEASE REFER TO SHT 2 FOR PLATING DETAILS.
 - PLEASE REFER TO SHT 3-8 FOR DIMENSIONS C & D.
 - RECOMMENDED PCB THICKNESS 1.60MM
 - PRODUCT SPECIFICATION: PS-99020-0001

ADD DATUM
 EC NO: S2017-0354
 DRWN: FCS00
 CHKD: CGOH
 APPR: KHLIM
 2016/12/13
 2017/01/17
 2017/01/18

QUALITY SYMBOLS	GENERAL TOLERANCES (UNLESS SPECIFIED)	
	mm	INCH
$\nabla = 0$	4 PLACES ± ---	± ---
$\nabla = 0$	3 PLACES ± ---	± ---
$\nabla = 0$	2 PLACES ± 0.20	± ---
	1 PLACE ± ---	± ---
	0 PLACE ± ---	± ---
	ANGULAR ± 3°	
	DRAFT WHERE APPLICABLE MUST REMAIN WITHIN DIMENSIONS	

DIMENSION STYLE		SCALE	DESIGN UNITS	THIRD ANGLE PROJECTION
MM ONLY		NTS	METRIC	
DRAWN BY	DATE	TITLE		
DB	1987/07/16	C GRID III DUAL ROW STRAIGHT PIN HEADER		
CHECKED BY	DATE			
DB	1987/07/16			
APPROVED BY	DATE			
MLONG	2012/02/24			
MATERIAL NO.	DOCUMENT NO.			
SEE TABLE	SD-90131-001			

molex

SHEET NO. 1 OF 8

THIS DRAWING CONTAINS INFORMATION THAT IS PROPRIETARY TO MOLEX INCORPORATED AND SHOULD NOT BE USED WITHOUT WRITTEN PERMISSION

PLATING OPTIONS	PLATING DESCRIPTION
A	3.00µm MIN TIN OVER 1.27MIN NICKEL OVERALL
B	0.38µm MIN GOLD IN SELECTED AREA AND 3.00µm MIN TIN IN SELECTED AREA AND 1.30µm MIN NICKEL OVERALL
C	0.76µm MIN GOLD IN SELECTED AREA AND 3.00µm MIN TIN IN SELECTED AREA AND 1.30µm MIN NICKEL OVERALL
D	0.05-0.10µm GOLD FLASH IN SELECTED AREA AND 3.00µm MIN TIN IN SELECTED AREA AND 1.30µm MIN NICKEL OVERALL
E	0.38µm MIN GOLD IN SELECTED AREA (2 SIDES) AND 3.00µm MIN TIN IN SELECTED AREA AND 1.30µm MIN NICKEL OVERALL
F	0.76µm MIN GOLD IN SELECTED AREA (2 SIDES) AND 3.00µm MIN TIN IN SELECTED AREA AND 1.30µm MIN NICKEL OVERALL
G	0.05-0.10µm GOLD FLASH IN SELECTED AREA (2 SIDES) AND 3.00µm MIN TIN IN SELECTED AREA AND 1.30µm MIN NICKEL OVERALL

ADD DATUM EC NO: S2017-0354 DRWN: FCS00 2016/12/13 CHKD: G0H 2017/01/17 APPR: KHLIM 2017/01/18	QUALITY SYMBOLS $\nabla = 0$ $\nabla = 0$ $\nabla = 0$	GENERAL TOLERANCES (UNLESS SPECIFIED)		DIMENSION STYLE MM ONLY		SCALE NTS	DESIGN UNITS METRIC	THIRD ANGLE PROJECTION	
				DRAWN BY DB	DATE 1987/07/16	TITLE C GRID III DUAL ROW STRAIGHT PIN HEADER			
				CHECKED BY DB	DATE 1987/07/16	APPROVED BY MLONG			
				DATE 2012/02/24	MATERIAL NO. SEE TABLE		DOCUMENT NO. SD-90131-001	SHEET NO. 2 OF 8	
DRAFT WHERE APPLICABLE MUST REMAIN WITHIN DIMENSIONS		ANGULAR $\pm 3^\circ$		THIS DRAWING CONTAINS INFORMATION THAT IS PROPRIETARY TO MOLEX INCORPORATED AND SHOULD NOT BE USED WITHOUT WRITTEN PERMISSION					

10 9 8 7 6 5 4 3 2 1

CIRCUIT SIZE	PLATING TYPE A PART NO.	PLATING TYPE E PART NO.	PLATING TYPE F PART NO.
2 X 1	90131-0121	90131-0761	90131-0921
2 X 2	▲ -0122	▲ -0762	▲ -0922
2 X 3	-0123	-0763	-0923
2 X 4	-0124	-0764	-0924
2 X 5	-0125	-0765	-0925
2 X 6	-0126	-0766	-0926
2 X 7	-0127	-0767	-0927
2 X 8	-0128	-0768	-0928
2 X 9	-0129	-0769	-0929
2 X 10	-0130	-0770	-0930
2 X 11	-0131	-0771	-0931
2 X 12	-0132	-0772	-0932
2 X 13	-0133	-0773	-0933
2 X 14	-0134	-0774	-0934
2 X 15	-0135	-0775	-0935
2 X 16	-0136	-0776	-0936
2 X 17	-0137	-0777	-0937
2 X 18	-0138	-0778	-0938
2 X 19	-0139	-0779	-0939
2 X 20	-0140	-0780	-0940
2 X 21	-0141	-0781	-0941
2 X 22	-0142	-0782	-0942
2 X 23	-0143	-0783	-0943
2 X 24	-0144	-0784	-0944
2 X 25	-0145	-0785	-0945
2 X 26	-0146	-0786	-0946
2 X 27	-0147	-0787	-0947
2 X 28	-0148	-0788	-0948
2 X 29	-0149	-0789	-0949
2 X 30	-0150	-0790	-0950
2 X 31	-0151	-0791	-0951
2 X 32	-0152	-0792	-0952
2 X 33	-0153	-0793	-0953
2 X 34	-0154	-0794	-0954
2 X 35	-0155	-0795	-0955
2 X 36	-0156	-0796	-0956
2 X 37	-0157	-0797	-0957
2 X 38	-0158	-0798	-0958
2 X 39	▼ -0159	▼ -0799	▼ -0959
2 X 40	90131-0160	90131-0800	90131-0960

DIM
C (+0.20)
±.008
(6.75)
.266

DIM
D (+0.20)
0.30
±.008
-0.012
(2.90)
.114

STANDARD PRODUCTS

ADD DATUM EC NO: S2017-0354 DRWN: FCS00 2016/12/13 CHKD: CGOH 2017/01/17 APPR: KHL IM 2017/01/18	QUALITY SYMBOLS	GENERAL TOLERANCES (UNLESS SPECIFIED)	DIMENSION STYLE	SCALE	DESIGN UNITS	THIRD ANGLE PROJECTION	
	$\nabla_F = 0$ $\nabla_E = 0$ $\nabla_D = 0$	mm INCH 4 PLACES ± --- ± --- 3 PLACES ± --- ± --- 2 PLACES ± 0.20 ± --- 1 PLACE ± --- ± --- 0 PLACE ± --- ± ---	MM ONLY	NTS	METRIC	DRAWN BY: DB DATE: 1987/07/16 CHECKED BY: DB DATE: 1987/07/16 APPROVED BY: MLONG DATE: 2012/02/24	TITLE
	ANGULAR ± 3° DRAFT WHERE APPLICABLE MUST REMAIN WITHIN DIMENSIONS	SEE TABLE				C GRID III DUAL ROW STRAIGHT PIN HEADER	
						molex SD-90131-001	SHEET NO. 3 OF 8

THIS DRAWING CONTAINS INFORMATION THAT IS PROPRIETARY TO MOLEX INCORPORATED AND SHOULD NOT BE USED WITHOUT WRITTEN PERMISSION

9 8 7 6 5 4 3 2 1

CIRCUIT SIZE	PLATING TYPE A PART NO.	PLATING TYPE E PART NO.	PLATING TYPE F PART NO.
2 X 1	90131-0041	90131-0681	90131-0841
2 X 2	▲ -0042	▲ -0682	▲ -0842
2 X 3	-0043	-0683	-0843
2 X 4	-0044	-0684	-0844
2 X 5	-0045	-0685	-0845
2 X 6	-0046	-0686	-0846
2 X 7	-0047	-0687	-0847
2 X 8	-0048	-0688	-0848
2 X 9	-0049	-0689	-0849
2 X 10	-0050	-0690	-0850
2 X 11	-0051	-0691	-0851
2 X 12	-0052	-0692	-0852
2 X 13	-0053	-0693	-0853
2 X 14	-0054	-0694	-0854
2 X 15	-0055	-0695	-0855
2 X 16	-0056	-0696	-0856
2 X 17	-0057	-0697	-0857
2 X 18	-0058	-0698	-0858
2 X 19	-0059	-0699	-0859
2 X 20	-0060	-0700	-0860
2 X 21	-0061	-0701	-0861
2 X 22	-0062	-0702	-0862
2 X 23	-0063	-0703	-0863
2 X 24	-0064	-0704	-0864
2 X 25	-0065	-0705	-0865
2 X 26	-0066	-0706	-0866
2 X 27	-0067	-0707	-0867
2 X 28	-0068	-0708	-0868
2 X 29	-0069	-0709	-0869
2 X 30	-0070	-0710	-0870
2 X 31	-0071	-0711	-0871
2 X 32	-0072	-0712	-0872
2 X 33	-0073	-0713	-0873
2 X 34	-0074	-0714	-0874
2 X 35	-0075	-0715	-0875
2 X 36	-0076	-0716	-0876
2 X 37	-0077	-0717	-0877
2 X 38	-0078	-0718	-0878
2 X 39	▼ -0079	▼ -0719	▼ -0879
2 X 40	90131-0080	90131-0720	90131-0880

DIM C (+0.20) ±.008 (5.75) .226

DIM D (+0.20) ±.008 ±.012 (2.90) .114

CIRCUIT SIZE	PLATING TYPE A PART NO.	PLATING TYPE E PART NO.	PLATING TYPE F PART NO.
2 X 1	90131-0081	90131-0721	90131-0881
2 X 2	▲ -0082	▲ -0722	▲ -0882
2 X 3	-0083	-0723	-0883
2 X 4	-0084	-0724	-0884
2 X 5	-0085	-0725	-0885
2 X 6	-0086	-0726	-0886
2 X 7	-0087	-0727	-0887
2 X 8	-0088	-0728	-0888
2 X 9	-0089	-0729	-0889
2 X 10	-0090	-0730	-0890
2 X 11	-0091	-0731	-0891
2 X 12	-0092	-0732	-0892
2 X 13	-0093	-0733	-0893
2 X 14	-0094	-0734	-0894
2 X 15	-0095	-0735	-0895
2 X 16	-0096	-0736	-0896
2 X 17	-0097	-0737	-0897
2 X 18	-0098	-0738	-0898
2 X 19	-0099	-0739	-0899
2 X 20	-0100	-0740	-0900
2 X 21	-0101	-0741	-0901
2 X 22	-0102	-0742	-0902
2 X 23	-0103	-0743	-0903
2 X 24	-0104	-0744	-0904
2 X 25	-0105	-0745	-0905
2 X 26	-0106	-0746	-0906
2 X 27	-0107	-0747	-0907
2 X 28	-0108	-0748	-0908
2 X 29	-0109	-0749	-0909
2 X 30	-0110	-0750	-0910
2 X 31	-0111	-0751	-0911
2 X 32	-0112	-0752	-0912
2 X 33	-0113	-0753	-0913
2 X 34	-0114	-0754	-0914
2 X 35	-0115	-0755	-0915
2 X 36	-0116	-0756	-0916
2 X 37	-0117	-0757	-0917
2 X 38	-0118	-0758	-0918
2 X 39	▼ -0119	▼ -0759	▼ -0919
2 X 40	90131-0120	90131-0760	90131-0920

DIM C (+0.20) ±.008 (5.75) .226

DIM D (+0.25) ±.010 (4.50) .177

NON-STANDARD PRODUCTS

ADD DATUM
EC NO: S2017-0354
2016/12/13
DRWN:FC500
CHKD:GGH
2017/01/17
APPR:KHLIM
2017/01/18

QUALITY SYMBOLS
FA=0
FG=0
FB=0

GENERAL TOLERANCES (UNLESS SPECIFIED)

	mm	INCH
4 PLACES	± ---	± ---
3 PLACES	± ---	± ---
2 PLACES	± 0.20	± ---
1 PLACE	± ---	± ---
0 PLACE	± ---	± ---

ANGULAR ± 3 °
DRAFT WHERE APPLICABLE
MUST REMAIN WITHIN DIMENSIONS

DIMENSION STYLE
MM ONLY

DRAWN BY	DATE
DB	1987/07/16
CHECKED BY	DATE
DB	1987/07/16
APPROVED BY	DATE
MLONG	2012/02/24

MATERIAL NO.
SEE TABLE

SCALE
NTS

DESIGN UNITS
METRIC

THIRD ANGLE PROJECTION

TITLE
C GRID III DUAL ROW STRAIGHT PIN HEADER

molex

DOCUMENT NO.
SD-90131-001

SHEET NO.
4 OF 8

THIS DRAWING CONTAINS INFORMATION THAT IS PROPRIETARY TO MOLEX INCORPORATED AND SHOULD NOT BE USED WITHOUT WRITTEN PERMISSION

CIRCUIT SIZE	PLATING TYPE A PART NO.	PLATING TYPE E PART NO.	PLATING TYPE F PART NO.
2 X 1	90131-0161	90131-0801	90131-0961
2 X 2	▲ -0162	-0802	▲ -0962
2 X 3	-0163	-0803	-0963
2 X 4	-0164	-0804	-0964
2 X 5	-0165	-0805	-0965
2 X 6	-0166	-0806	-0966
2 X 7	-0167	-0807	-0967
2 X 8	-0168	-0808	-0968
2 X 9	-0169	-0809	-0969
2 X 10	-0170	-0810	-0970
2 X 11	-0171	-0811	-0971
2 X 12	-0172	-0812	-0972
2 X 13	-0173	-0813	-0973
2 X 14	-0174	-0814	-0974
2 X 15	-0175	-0815	-0975
2 X 16	-0176	-0816	-0976
2 X 17	-0177	-0817	-0977
2 X 18	-0178	-0818	-0978
2 X 19	-0179	-0819	-0979
2 X 20	-0180	-0820	-0980
2 X 21	-0181	-0821	-0981
2 X 22	-0182	-0822	-0982
2 X 23	-0183	-0823	-0983
2 X 24	-0184	-0824	-0984
2 X 25	-0185	-0825	-0985
2 X 26	-0186	-0826	-0986
2 X 27	-0187	-0827	-0987
2 X 28	-0188	-0828	-0988
2 X 29	-0189	-0829	-0989
2 X 30	-0190	-0830	-0990
2 X 31	-0191	-0831	-0991
2 X 32	-0192	-0832	-0992
2 X 33	-0193	-0833	-0993
2 X 34	-0194	-0834	-0994
2 X 35	-0195	-0835	-0995
2 X 36	-0196	-0836	-0996
2 X 37	-0197	-0837	-0997
2 X 38	-0198	-0838	-0998
2 X 39	▼ -0199	-0839	▼ -0999
2 X 40	90131-0200	90131-0840	90131-1000

DIM C (±0.20) ±.008 (6.75) .266

DIM D (±0.25) ±.010 (4.50) .177

NON-STANDARD PRODUCTS

ADD DATUM EC NO: S2017-0354 DRWN:FCS00 2016/12/13 CHKD:CG0H 2017/01/17 APPR:KHL JM 2017/01/18	QUALITY SYMBOLS	GENERAL TOLERANCES (UNLESS SPECIFIED)	DIMENSION STYLE	SCALE	DESIGN UNITS	THIRD ANGLE PROJECTION
	$\nabla_A = 0$ $\nabla_C = 0$ $\nabla_F = 0$	mm INCH	MM ONLY	NTS	METRIC	
		4 PLACES ± --- ± ---	DRAWN BY DATE	TITLE		
		3 PLACES ± --- ± ---	DB 1987/07/16	C GRID III DUAL ROW STRAIGHT PIN HEADER		
	2 PLACES ± 0.20 ± ---	CHECKED BY DATE				
	1 PLACE ± --- ± ---	DB 1987/07/16				
	0 PLACE ± --- ± ---	APPROVED BY DATE				
	ANGULAR ± 3 °	MLONG 2012/02/24				
	DRAFT WHERE APPLICABLE MUST REMAIN WITHIN DIMENSIONS	MATERIAL NO.	SEE TABLE		DOCUMENT NO.	
		SIZE A3	THIS DRAWING CONTAINS INFORMATION THAT IS PROPRIETARY TO MOLEX INCORPORATED AND SHOULD NOT BE USED WITHOUT WRITTEN PERMISSION			
					SD-90131-001	SHEET NO. 5 OF 8

	10	9	8	7	6	5	4	3	2	1		
		CIRCUIT SIZE	PLATING TYPE B PART NO.	PLATING TYPE C PART NO.	PLATING TYPE D PART NO.	PLATING TYPE G PART NO.		CIRCUIT SIZE	PLATING TYPE B PART NO.	PLATING TYPE C PART NO.	PLATING TYPE D PART NO.	PLATING TYPE G PART NO.
F		2 X 1	90131-0281	90131-0441	90131-0601	90131-1081		2 X 1	90131-0201	90131-0361	90131-0521	90131-1001
		2 X 2	↑ -0282	↑ -0442	↑ -0602	↑ -1082		2 X 2	↑ -0202	↑ -0362	↑ -0522	↑ -1002
		2 X 3	-0283	-0443	-0603	-1083		2 X 3	-0203	-0363	-0523	-1003
		2 X 4	-0284	-0444	-0604	-1084		2 X 4	-0204	-0364	-0524	-1004
		2 X 5	-0285	-0445	-0605	-1085		2 X 5	-0205	-0365	-0525	-1005
		2 X 6	-0286	-0446	-0606	-1086		2 X 6	-0206	-0366	-0526	-1006
		2 X 7	-0287	-0447	-0607	-1087		2 X 7	-0207	-0367	-0527	-1007
		2 X 8	-0288	-0448	-0608	-1088		2 X 8	-0208	-0368	-0528	-1008
		2 X 9	-0289	-0449	-0609	-1089		2 X 9	-0209	-0369	-0529	-1009
E		2 X 10	-0290	-0450	-0610	-1090		2 X 10	-0210	-0370	-0530	-1010
		2 X 11	-0291	-0451	-0611	-1091		2 X 11	-0211	-0371	-0531	-1011
		2 X 12	-0292	-0452	-0612	-1092		2 X 12	-0212	-0372	-0532	-1012
		2 X 13	-0293	-0453	-0613	-1093		2 X 13	-0213	-0373	-0533	-1013
		2 X 14	-0294	-0454	-0614	-1094		2 X 14	-0214	-0374	-0534	-1014
		2 X 15	-0295	-0455	-0615	-1095		2 X 15	-0215	-0375	-0535	-1015
		2 X 16	-0296	-0456	-0616	-1096		2 X 16	-0216	-0376	-0536	-1016
		2 X 17	-0297	-0457	-0617	-1097		2 X 17	-0217	-0377	-0537	-1017
		2 X 18	-0298	-0458	-0618	-1098		2 X 18	-0218	-0378	-0538	-1018
		2 X 19	-0299	-0459	-0619	-1099		2 X 19	-0219	-0379	-0539	-1019
D		2 X 20	-0300	-0460	-0620	-1100		2 X 20	-0220	-0380	-0540	-1020
		2 X 21	-0301	-0461	-0621	-1101		2 X 21	-0221	-0381	-0541	-1021
		2 X 22	-0302	-0462	-0622	-1102		2 X 22	-0222	-0382	-0542	-1022
		2 X 23	-0303	-0463	-0623	-1103		2 X 23	-0223	-0383	-0543	-1023
		2 X 24	-0304	-0464	-0624	-1104		2 X 24	-0224	-0384	-0544	-1024
		2 X 25	-0305	-0465	-0625	-1105		2 X 25	-0225	-0385	-0545	-1025
		2 X 26	-0306	-0466	-0626	-1106		2 X 26	-0226	-0386	-0546	-1026
		2 X 27	-0307	-0467	-0627	-1107		2 X 27	-0227	-0387	-0547	-1027
		2 X 28	-0308	-0468	-0628	-1108		2 X 28	-0228	-0388	-0548	-1028
		2 X 29	-0309	-0469	-0629	-1109		2 X 29	-0229	-0389	-0549	-1029
C		2 X 30	-0310	-0470	-0630	-1110		2 X 30	-0230	-0390	-0550	-1030
		2 X 31	-0311	-0471	-0631	-1111		2 X 31	-0231	-0391	-0551	-1031
		2 X 32	-0312	-0472	-0632	-1112		2 X 32	-0232	-0392	-0552	-1032
		2 X 33	-0313	-0473	-0633	-1113		2 X 33	-0233	-0393	-0553	-1033
		2 X 34	-0314	-0474	-0634	-1114		2 X 34	-0234	-0394	-0554	-1034
		2 X 35	-0315	-0475	-0635	-1115		2 X 35	-0235	-0395	-0555	-1035
		2 X 36	-0316	-0476	-0636	-1116		2 X 36	-0236	-0396	-0556	-1036
		2 X 37	-0317	-0477	-0637	-1117		2 X 37	-0237	-0397	-0557	-1037
		2 X 38	-0318	-0478	-0638	-1118		2 X 38	-0238	-0398	-0558	-1038
B		2 X 39	↓ -0319	↓ -0479	↓ -0639	↓ -1119		2 X 39	↓ -0239	↓ -0399	↓ -0559	↓ -1039
		2 X 40	90131-0320	90131-0480	90131-0640	90131-1120		2 X 40	90131-0240	90131-0400	90131-0560	90131-1040

DIM C (+0.20 / ±.008) (6.75) .266

DIM D (+0.20 / 0.30 / ±.008 / ±.012) (2.90) .114

DIM C (+0.20 / ±.008) (5.75) .226

DIM D (+0.20 / 0.30 / ±.008 / ±.012) (2.90) .114

NON-STANDARD PRODUCTS
NOT FOR GENERAL RELEASE

ADD DATUM	2016/12/13	2017/01/17	2017/01/18
IEC NO: S2017-0354	DRWN:FC500	CHKD:G0H	APPR:KHL JM
REV	DESCRIPTION	QUALITY SYMBOLS	
		▽=0	
		▽=0	
		▽=0	

GENERAL TOLERANCES (UNLESS SPECIFIED)	mm	INCH
4 PLACES	± ---	± ---
3 PLACES	± ---	± ---
2 PLACES	± 0.20	± ---
1 PLACE	± ---	± ---
0 PLACE	± ---	± ---
ANGULAR ± 3 °		
DRAFT WHERE APPLICABLE MUST REMAIN WITHIN DIMENSIONS		

DIMENSION STYLE		SCALE	DESIGN UNITS	THIRD ANGLE PROJECTION
MM ONLY		NTS	METRIC	
DRAWN BY	DATE	TITLE		
DB	1987/07/16	C GRID III DUAL ROW STRAIGHT PIN HEADER		
CHECKED BY	DATE			
DB	1987/07/16			
APPROVED BY	DATE			
MLONG	2012/02/24			
MATERIAL NO.	DOCUMENT NO.			
SEE TABLE	SD-90131-001			
SIZE A3	THIS DRAWING CONTAINS INFORMATION THAT IS PROPRIETARY TO MOLEX INCORPORATED AND SHOULD NOT BE USED WITHOUT WRITTEN PERMISSION			

SCALE		DESIGN UNITS	THIRD ANGLE PROJECTION
NTS		METRIC	
TITLE		C GRID III DUAL ROW STRAIGHT PIN HEADER	
DRAWN BY		DATE	
DB		1987/07/16	
CHECKED BY		DATE	
DB		1987/07/16	
APPROVED BY		DATE	
MLONG		2012/02/24	
MATERIAL NO.	DOCUMENT NO.		
SEE TABLE	SD-90131-001		
SIZE A3	THIS DRAWING CONTAINS INFORMATION THAT IS PROPRIETARY TO MOLEX INCORPORATED AND SHOULD NOT BE USED WITHOUT WRITTEN PERMISSION		

molex

SD-90131-001 6 OF 8

CIRCUIT SIZE	PLATING TYPE B PART NO.	PLATING TYPE C PART NO.	PLATING TYPE D PART NO.	PLATING TYPE G PART NO.
2 X 1	90131-0241	90131-0401	90131-0561	90131-1041
2 X 2	▲ -0242	▲ -0402	▲ -0562	▲ -1042
2 X 3	▲ -0243	▲ -0403	▲ -0563	▲ -1043
2 X 4	▲ -0244	▲ -0404	▲ -0564	▲ -1044
2 X 5	▲ -0245	▲ -0405	▲ -0565	▲ -1045
2 X 6	▲ -0246	▲ -0406	▲ -0566	▲ -1046
2 X 7	▲ -0247	▲ -0407	▲ -0567	▲ -1047
2 X 8	▲ -0248	▲ -0408	▲ -0568	▲ -1048
2 X 9	▲ -0249	▲ -0409	▲ -0569	▲ -1049
2 X 10	▲ -0250	▲ -0410	▲ -0570	▲ -1050
2 X 11	▲ -0251	▲ -0411	▲ -0571	▲ -1051
2 X 12	▲ -0252	▲ -0412	▲ -0572	▲ -1052
2 X 13	▲ -0253	▲ -0413	▲ -0573	▲ -1053
2 X 14	▲ -0254	▲ -0414	▲ -0574	▲ -1054
2 X 15	▲ -0255	▲ -0415	▲ -0575	▲ -1055
2 X 16	▲ -0256	▲ -0416	▲ -0576	▲ -1056
2 X 17	▲ -0257	▲ -0417	▲ -0577	▲ -1057
2 X 18	▲ -0258	▲ -0418	▲ -0578	▲ -1058
2 X 19	▲ -0259	▲ -0419	▲ -0579	▲ -1059
2 X 20	▲ -0260	▲ -0420	▲ -0580	▲ -1060
2 X 21	▲ -0261	▲ -0421	▲ -0581	▲ -1061
2 X 22	▲ -0262	▲ -0422	▲ -0582	▲ -1062
2 X 23	▲ -0263	▲ -0423	▲ -0583	▲ -1063
2 X 24	▲ -0264	▲ -0424	▲ -0584	▲ -1064
2 X 25	▲ -0265	▲ -0425	▲ -0585	▲ -1065
2 X 26	▲ -0266	▲ -0426	▲ -0586	▲ -1066
2 X 27	▲ -0267	▲ -0427	▲ -0587	▲ -1067
2 X 28	▲ -0268	▲ -0428	▲ -0588	▲ -1068
2 X 29	▲ -0269	▲ -0429	▲ -0589	▲ -1069
2 X 30	▲ -0270	▲ -0430	▲ -0590	▲ -1070
2 X 31	▲ -0271	▲ -0431	▲ -0591	▲ -1071
2 X 32	▲ -0272	▲ -0432	▲ -0592	▲ -1072
2 X 33	▲ -0273	▲ -0433	▲ -0593	▲ -1073
2 X 34	▲ -0274	▲ -0434	▲ -0594	▲ -1074
2 X 35	▲ -0275	▲ -0435	▲ -0595	▲ -1075
2 X 36	▲ -0276	▲ -0436	▲ -0596	▲ -1076
2 X 37	▲ -0277	▲ -0437	▲ -0597	▲ -1077
2 X 38	▲ -0278	▲ -0438	▲ -0598	▲ -1078
2 X 39	▲ -0279	▲ -0439	▲ -0599	▲ -1079
2 X 40	90131-0280	90131-0440	90131-0600	90131-1080

DIM C (±0.20) ±.008 (5.75) .226

DIM D (±0.25) ±.010 (4.50) .177

CIRCUIT SIZE	PLATING TYPE B PART NO.	PLATING TYPE C PART NO.	PLATING TYPE D PART NO.	PLATING TYPE G PART NO.
2 X 1	90131-0321	90131-0481	90131-0641	90131-1121
2 X 2	▲ -0322	▲ -0482	▲ -0642	▲ -1122
2 X 3	▲ -0323	▲ -0483	▲ -0643	▲ -1123
2 X 4	▲ -0324	▲ -0484	▲ -0644	▲ -1124
2 X 5	▲ -0325	▲ -0485	▲ -0645	▲ -1125
2 X 6	▲ -0326	▲ -0486	▲ -0646	▲ -1126
2 X 7	▲ -0327	▲ -0487	▲ -0647	▲ -1127
2 X 8	▲ -0328	▲ -0488	▲ -0648	▲ -1128
2 X 9	▲ -0329	▲ -0489	▲ -0649	▲ -1129
2 X 10	▲ -0330	▲ -0490	▲ -0650	▲ -1130
2 X 11	▲ -0331	▲ -0491	▲ -0651	▲ -1131
2 X 12	▲ -0332	▲ -0492	▲ -0652	▲ -1132
2 X 13	▲ -0333	▲ -0493	▲ -0653	▲ -1133
2 X 14	▲ -0334	▲ -0494	▲ -0654	▲ -1134
2 X 15	▲ -0335	▲ -0495	▲ -0655	▲ -1135
2 X 16	▲ -0336	▲ -0496	▲ -0656	▲ -1136
2 X 17	▲ -0337	▲ -0497	▲ -0657	▲ -1137
2 X 18	▲ -0338	▲ -0498	▲ -0658	▲ -1138
2 X 19	▲ -0339	▲ -0499	▲ -0659	▲ -1139
2 X 20	▲ -0340	▲ -0500	▲ -0660	▲ -1140
2 X 21	▲ -0341	▲ -0501	▲ -0661	▲ -1141
2 X 22	▲ -0342	▲ -0502	▲ -0662	▲ -1142
2 X 23	▲ -0343	▲ -0503	▲ -0663	▲ -1143
2 X 24	▲ -0344	▲ -0504	▲ -0664	▲ -1144
2 X 25	▲ -0345	▲ -0505	▲ -0665	▲ -1145
2 X 26	▲ -0346	▲ -0506	▲ -0666	▲ -1146
2 X 27	▲ -0347	▲ -0507	▲ -0667	▲ -1147
2 X 28	▲ -0348	▲ -0508	▲ -0668	▲ -1148
2 X 29	▲ -0349	▲ -0509	▲ -0669	▲ -1149
2 X 30	▲ -0350	▲ -0510	▲ -0670	▲ -1150
2 X 31	▲ -0351	▲ -0511	▲ -0671	▲ -1151
2 X 32	▲ -0352	▲ -0512	▲ -0672	▲ -1152
2 X 33	▲ -0353	▲ -0513	▲ -0673	▲ -1153
2 X 34	▲ -0354	▲ -0514	▲ -0674	▲ -1154
2 X 35	▲ -0355	▲ -0515	▲ -0675	▲ -1155
2 X 36	▲ -0356	▲ -0516	▲ -0676	▲ -1156
2 X 37	▲ -0357	▲ -0517	▲ -0677	▲ -1157
2 X 38	▲ -0358	▲ -0518	▲ -0678	▲ -1158
2 X 39	▲ -0359	▲ -0519	▲ -0679	▲ -1159
2 X 40	90131-0360	90131-0520	90131-0680	90131-1160

DIM C (±0.20) ±.008 (6.75) .266

DIM D (±0.25) ±.010 (4.50) .177

**NON-STANDARD PRODUCTS
NOT FOR GENERAL RELEASE**

ADD DATUM	2016/12/13	QUALITY SYMBOLS
EC NO: S2017-0354	2017/01/17	▽=0
DRWN:FC00	2017/01/17	▽=0
CHKD:CG0H	2017/01/18	▽=0
APPR:KHLIM		
REV	DESCRIPTION	

GENERAL TOLERANCES (UNLESS SPECIFIED)	
4 PLACES	± ---
3 PLACES	± ---
2 PLACES	± 0.20
1 PLACE	± ---
0 PLACE	± ---
ANGULAR ± 3°	
DRAFT WHERE APPLICABLE MUST REMAIN WITHIN DIMENSIONS	

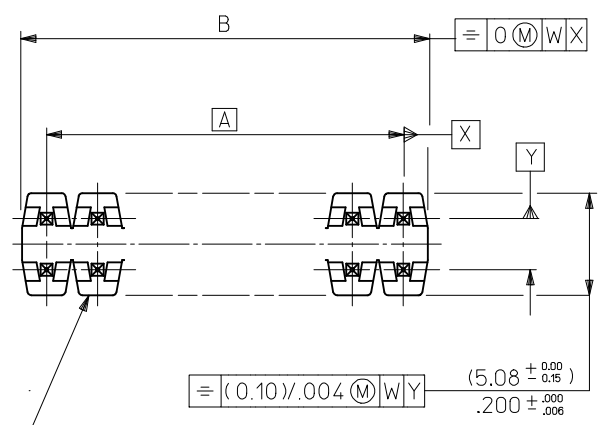
DIMENSION STYLE	
MM ONLY	
DRAWN BY	DATE
DB	1987/07/16
CHECKED BY	DATE
DB	1987/07/16
APPROVED BY	DATE
MLONG	2012/02/24
MATERIAL NO.	
SEE TABLE	
SIZE	
A3	

SCALE	DESIGN UNITS	THIRD ANGLE PROJECTION
NTS	METRIC	
TITLE		
C GRID III DUAL ROW STRAIGHT PIN HEADER		
DOCUMENT NO.		SHEET NO.
SD-90131-001		7 OF 8
THIS DRAWING CONTAINS INFORMATION THAT IS PROPRIETARY TO MOLEX INCORPORATED AND SHOULD NOT BE USED WITHOUT WRITTEN PERMISSION		

CIRCUIT SIZE	PLATING TYPE A PART NO.	PIN PART NUMBER	WAFER PART NUMBER	DIM C ^(±0.20) ±.008	DIM D ^(±0.30) ±.008 -.012
2 X 6	90131-3126	90129-2008	90131-0040	(14.60) .575	(2.38) .094
2 X 36	90131-3128	90129-2008	90131-0040	(14.60) .575	(2.38) .094
2 X 40	90131-3127	90129-2008	90131-0040	(14.60) .575	(2.38) .094

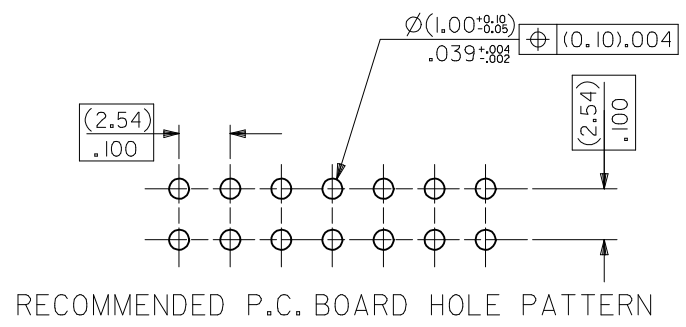
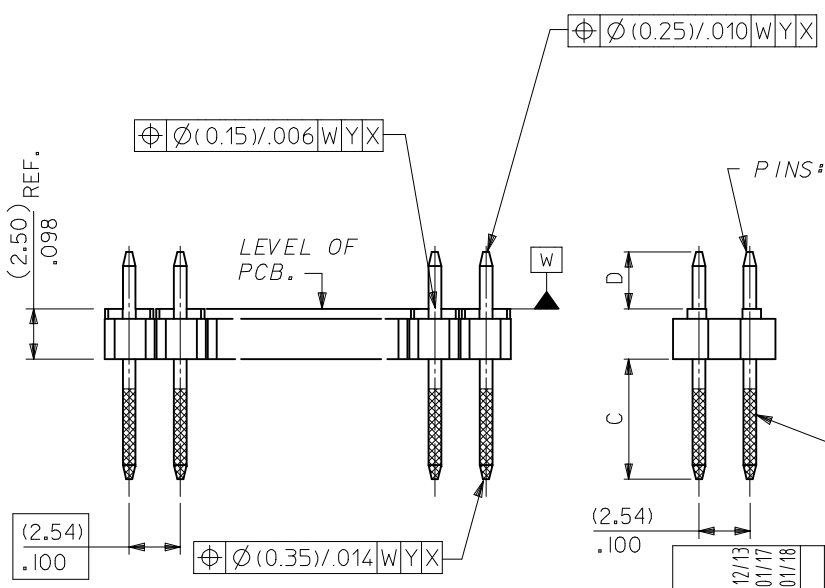
STANDARD PRODUCTS

ADD DATUM EC NO: S2017-0354 DRWN:FC500 CHKD:CGOH APPR:KHLIM	2016/12/13 2017/01/17 2017/01/18	DESCRIPTION REV	QUALITY SYMBOLS	GENERAL TOLERANCES (UNLESS SPECIFIED)		DIMENSION STYLE MM ONLY		SCALE NTS	DESIGN UNITS METRIC	THIRD ANGLE PROJECTION			
			$\nabla = 0$ $\nabla = 0$ $\nabla = 0$	4 PLACES	mm	INCH	DRAWN BY	DATE	TITLE C GRID III DUAL ROW STRAIGHT PIN HEADER				
				3 PLACES	±---	±---	CHECKED BY	DATE					
				2 PLACES	±0.20	±---	APPROVED BY	DATE	molex DOCUMENT NO. SD-90131-001 SHEET NO. 8 OF 8				
1 PLACE	±---	±---	MATERIAL NO.	2012/02/24									
0 PLACE	±---	±---	ANGULAR ± 3 °		SEE TABLE		THIS DRAWING CONTAINS INFORMATION THAT IS PROPRIETARY TO MOLEX INCORPORATED AND SHOULD NOT BE USED WITHOUT WRITTEN PERMISSION						
DRAFT WHERE APPLICABLE MUST REMAIN WITHIN DIMENSIONS													



WAFER: 15% GLASS FILLED POLYESTER TO UL 94V-0. COLOUR: BLACK.

CKT SIZE	DIM. "A"		DIM. "B" (+0.20 / -0.008)		CKT SIZE	DIM. "A"		DIM. "B" (+0.20 / -0.008)	
2X 1			(2.54)	.100	2X21	(50.80)	2.000	(53.34)	2.100
2X 2	(2.54)	.100	(5.08)	.200	2X22	(53.34)	2.100	(55.88)	2.200
2X 3	(5.08)	.200	(7.62)	.300	2X23	(55.88)	2.200	(58.42)	2.300
2X 4	(7.62)	.300	(10.16)	.400	2X24	(58.42)	2.300	(60.96)	2.400
2X 5	(10.16)	.400	(12.70)	.500	2X25	(60.96)	2.400	(63.50)	2.500
2X 6	(12.70)	.500	(15.24)	.600	2X26	(63.50)	2.500	(66.04)	2.600
2X 7	(15.24)	.600	(17.78)	.700	2X27	(66.04)	2.600	(68.58)	2.700
2X 8	(17.78)	.700	(20.32)	.800	2X28	(68.58)	2.700	(71.12)	2.800
2X 9	(20.32)	.800	(22.86)	.900	2X29	(71.12)	2.800	(73.66)	2.900
2X10	(22.86)	.900	(25.40)	1.000	2X30	(73.66)	2.900	(76.20)	3.000
2X11	(25.40)	1.000	(27.94)	1.100	2X31	(76.20)	3.000	(78.74)	3.100
2X12	(27.94)	1.100	(30.48)	1.200	2X32	(78.74)	3.100	(81.28)	3.200
2X13	(30.48)	1.200	(33.02)	1.300	2X33	(81.28)	3.200	(83.82)	3.300
2X14	(33.02)	1.300	(35.56)	1.400	2X34	(83.82)	3.300	(86.36)	3.400
2X15	(35.56)	1.400	(38.10)	1.500	2X35	(86.36)	3.400	(88.90)	3.500
2X16	(38.10)	1.500	(40.64)	1.600	2X36	(88.90)	3.500	(91.44)	3.600
2X17	(40.64)	1.600	(43.18)	1.700	2X37	(91.44)	3.600	(93.98)	3.700
2X18	(43.18)	1.700	(45.72)	1.800	2X38	(93.98)	3.700	(96.52)	3.800
2X19	(45.72)	1.800	(48.26)	1.900	2X39	(96.52)	3.800	(99.06)	3.900
2X20	(48.26)	1.900	(50.80)	2.000	2X40	(99.06)	3.900	(101.60)	4.000



- NOTES
- PLEASE REFER TO SHT 2 FOR PLATING DETAILS.
 - PLEASE REFER TO SHT 3-8 FOR DIMENSIONS C & D.
 - RECOMMENDED PCB THICKNESS 1.60MM
 - PRODUCT SPECIFICATION: PS-99020-0001

ADD DATUM
 EC NO: S2017-0354
 DRWN: FCS00
 CHKD: CGOH
 APPR: KHLIM
 2016/12/13
 2017/01/17
 2017/01/18

QUALITY SYMBOLS	GENERAL TOLERANCES (UNLESS SPECIFIED)	
	mm	INCH
$\nabla = 0$	4 PLACES ± ---	± ---
$\nabla = 0$	3 PLACES ± ---	± ---
$\nabla = 0$	2 PLACES ± 0.20	± ---
	1 PLACE ± ---	± ---
	0 PLACE ± ---	± ---
	ANGULAR ± 3°	
	DRAFT WHERE APPLICABLE MUST REMAIN WITHIN DIMENSIONS	

DIMENSION STYLE		SCALE	DESIGN UNITS	THIRD ANGLE PROJECTION
MM ONLY		NTS	METRIC	
DRAWN BY	DATE	TITLE		
DB	1987/07/16	C GRID III DUAL ROW STRAIGHT PIN HEADER		
CHECKED BY	DATE			
DB	1987/07/16			
APPROVED BY	DATE			
MLONG	2012/02/24			
MATERIAL NO.	DOCUMENT NO.			
SEE TABLE	SD-90131-001			
SIZE A3	THIS DRAWING CONTAINS INFORMATION THAT IS PROPRIETARY TO MOLEX INCORPORATED AND SHOULD NOT BE USED WITHOUT WRITTEN PERMISSION			

molex

SD-90131-001

SHEET NO. 1 OF 8

PLATING OPTIONS	PLATING DESCRIPTION
A	3.00µm MIN TIN OVER 1.27MIN NICKEL OVERALL
B	0.38µm MIN GOLD IN SELECTED AREA AND 3.00µm MIN TIN IN SELECTED AREA AND 1.30µm MIN NICKEL OVERALL
C	0.76µm MIN GOLD IN SELECTED AREA AND 3.00µm MIN TIN IN SELECTED AREA AND 1.30µm MIN NICKEL OVERALL
D	0.05-0.10µm GOLD FLASH IN SELECTED AREA AND 3.00µm MIN TIN IN SELECTED AREA AND 1.30µm MIN NICKEL OVERALL
E	0.38µm MIN GOLD IN SELECTED AREA (2 SIDES) AND 3.00µm MIN TIN IN SELECTED AREA AND 1.30µm MIN NICKEL OVERALL
F	0.76µm MIN GOLD IN SELECTED AREA (2 SIDES) AND 3.00µm MIN TIN IN SELECTED AREA AND 1.30µm MIN NICKEL OVERALL
G	0.05-0.10µm GOLD FLASH IN SELECTED AREA (2 SIDES) AND 3.00µm MIN TIN IN SELECTED AREA AND 1.30µm MIN NICKEL OVERALL

ADD DATUM EC NO: S2017-0354 DRWN: FCS00 2016/12/13 CHKD: G0H 2017/01/17 APPR: KHLIM 2017/01/18	QUALITY SYMBOLS $\nabla = 0$ $\nabla = 0$ $\nabla = 0$	GENERAL TOLERANCES (UNLESS SPECIFIED)		DIMENSION STYLE MM ONLY		SCALE NTS	DESIGN UNITS METRIC	THIRD ANGLE PROJECTION	
		4 PLACES ± --- ± ---	mm INCH	DRAWN BY DB	DATE 1987/07/16	TITLE C GRID III DUAL ROW STRAIGHT PIN HEADER			
		3 PLACES ± --- ± ---	± 0.20 ± ---	CHECKED BY DB	DATE 1987/07/16	molex			
		2 PLACES ± 0.20 ± ---	± --- ± ---	APPROVED BY MLONG	DATE 2012/02/24	MATERIAL NO.		DOCUMENT NO. SD-90131-001	SHEET NO. 2 OF 8
1 PLACE ± --- ± ---		ANGULAR ± 3 °		SEE TABLE		THIS DRAWING CONTAINS INFORMATION THAT IS PROPRIETARY TO MOLEX INCORPORATED AND SHOULD NOT BE USED WITHOUT WRITTEN PERMISSION			
0 PLACE ± --- ± ---		DRAFT WHERE APPLICABLE MUST REMAIN WITHIN DIMENSIONS		SIZE A3					

CIRCUIT SIZE	PLATING TYPE A PART NO.	PLATING TYPE E PART NO.	PLATING TYPE F PART NO.
2 X 1	90131-0121	90131-0761	90131-0921
2 X 2	▲ -0122	▲ -0762	▲ -0922
2 X 3	-0123	-0763	-0923
2 X 4	-0124	-0764	-0924
2 X 5	-0125	-0765	-0925
2 X 6	-0126	-0766	-0926
2 X 7	-0127	-0767	-0927
2 X 8	-0128	-0768	-0928
2 X 9	-0129	-0769	-0929
2 X 10	-0130	-0770	-0930
2 X 11	-0131	-0771	-0931
2 X 12	-0132	-0772	-0932
2 X 13	-0133	-0773	-0933
2 X 14	-0134	-0774	-0934
2 X 15	-0135	-0775	-0935
2 X 16	-0136	-0776	-0936
2 X 17	-0137	-0777	-0937
2 X 18	-0138	-0778	-0938
2 X 19	-0139	-0779	-0939
2 X 20	-0140	-0780	-0940
2 X 21	-0141	-0781	-0941
2 X 22	-0142	-0782	-0942
2 X 23	-0143	-0783	-0943
2 X 24	-0144	-0784	-0944
2 X 25	-0145	-0785	-0945
2 X 26	-0146	-0786	-0946
2 X 27	-0147	-0787	-0947
2 X 28	-0148	-0788	-0948
2 X 29	-0149	-0789	-0949
2 X 30	-0150	-0790	-0950
2 X 31	-0151	-0791	-0951
2 X 32	-0152	-0792	-0952
2 X 33	-0153	-0793	-0953
2 X 34	-0154	-0794	-0954
2 X 35	-0155	-0795	-0955
2 X 36	-0156	-0796	-0956
2 X 37	-0157	-0797	-0957
2 X 38	-0158	-0798	-0958
2 X 39	▼ -0159	▼ -0799	▼ -0959
2 X 40	90131-0160	90131-0800	90131-0960

DIM
C (+0.20)
±.008
(6.75)
.266

DIM
D (+0.20)
0.30
±.008
-0.012
(2.90)
.114

STANDARD PRODUCTS

ADD DATUM EC NO: S2017-0354 DRWN: FCS00 2016/12/13 CHKD: CGOH 2017/01/17 APPR: KHL IM 2017/01/18	QUALITY SYMBOLS	GENERAL TOLERANCES (UNLESS SPECIFIED)	DIMENSION STYLE	SCALE	DESIGN UNITS	THIRD ANGLE PROJECTION	
	$\nabla_F = 0$ $\nabla_E = 0$ $\nabla_B = 0$	mm INCH 4 PLACES ± --- ± --- 3 PLACES ± --- ± --- 2 PLACES ± 0.20 ± --- 1 PLACE ± --- ± --- 0 PLACE ± --- ± ---	MM ONLY	NTS	METRIC	DRAWN BY: DB DATE: 1987/07/16 CHECKED BY: DB DATE: 1987/07/16 APPROVED BY: MLONG DATE: 2012/02/24	TITLE
	ANGULAR ± 3° DRAFT WHERE APPLICABLE MUST REMAIN WITHIN DIMENSIONS	SEE TABLE	C GRID III DUAL ROW STRAIGHT PIN HEADER		molex SD-90131-001		SHEET NO. 3 OF 8
	THIS DRAWING CONTAINS INFORMATION THAT IS PROPRIETARY TO MOLEX INCORPORATED AND SHOULD NOT BE USED WITHOUT WRITTEN PERMISSION						

CIRCUIT SIZE	PLATING TYPE A PART NO.	PLATING TYPE E PART NO.	PLATING TYPE F PART NO.
2 X 1	90131-0041	90131-0681	90131-0841
2 X 2	▲ -0042	▲ -0682	▲ -0842
2 X 3	-0043	-0683	-0843
2 X 4	-0044	-0684	-0844
2 X 5	-0045	-0685	-0845
2 X 6	-0046	-0686	-0846
2 X 7	-0047	-0687	-0847
2 X 8	-0048	-0688	-0848
2 X 9	-0049	-0689	-0849
2 X 10	-0050	-0690	-0850
2 X 11	-0051	-0691	-0851
2 X 12	-0052	-0692	-0852
2 X 13	-0053	-0693	-0853
2 X 14	-0054	-0694	-0854
2 X 15	-0055	-0695	-0855
2 X 16	-0056	-0696	-0856
2 X 17	-0057	-0697	-0857
2 X 18	-0058	-0698	-0858
2 X 19	-0059	-0699	-0859
2 X 20	-0060	-0700	-0860
2 X 21	-0061	-0701	-0861
2 X 22	-0062	-0702	-0862
2 X 23	-0063	-0703	-0863
2 X 24	-0064	-0704	-0864
2 X 25	-0065	-0705	-0865
2 X 26	-0066	-0706	-0866
2 X 27	-0067	-0707	-0867
2 X 28	-0068	-0708	-0868
2 X 29	-0069	-0709	-0869
2 X 30	-0070	-0710	-0870
2 X 31	-0071	-0711	-0871
2 X 32	-0072	-0712	-0872
2 X 33	-0073	-0713	-0873
2 X 34	-0074	-0714	-0874
2 X 35	-0075	-0715	-0875
2 X 36	-0076	-0716	-0876
2 X 37	-0077	-0717	-0877
2 X 38	-0078	-0718	-0878
2 X 39	▼ -0079	▼ -0719	▼ -0879
2 X 40	90131-0080	90131-0720	90131-0880

DIM C (+0.20) ±.008 (5.75) .226

DIM D (+0.20) ±.008 ±.012 (2.90) .114

CIRCUIT SIZE	PLATING TYPE A PART NO.	PLATING TYPE E PART NO.	PLATING TYPE F PART NO.
2 X 1	90131-0081	90131-0721	90131-0881
2 X 2	▲ -0082	▲ -0722	▲ -0882
2 X 3	-0083	-0723	-0883
2 X 4	-0084	-0724	-0884
2 X 5	-0085	-0725	-0885
2 X 6	-0086	-0726	-0886
2 X 7	-0087	-0727	-0887
2 X 8	-0088	-0728	-0888
2 X 9	-0089	-0729	-0889
2 X 10	-0090	-0730	-0890
2 X 11	-0091	-0731	-0891
2 X 12	-0092	-0732	-0892
2 X 13	-0093	-0733	-0893
2 X 14	-0094	-0734	-0894
2 X 15	-0095	-0735	-0895
2 X 16	-0096	-0736	-0896
2 X 17	-0097	-0737	-0897
2 X 18	-0098	-0738	-0898
2 X 19	-0099	-0739	-0899
2 X 20	-0100	-0740	-0900
2 X 21	-0101	-0741	-0901
2 X 22	-0102	-0742	-0902
2 X 23	-0103	-0743	-0903
2 X 24	-0104	-0744	-0904
2 X 25	-0105	-0745	-0905
2 X 26	-0106	-0746	-0906
2 X 27	-0107	-0747	-0907
2 X 28	-0108	-0748	-0908
2 X 29	-0109	-0749	-0909
2 X 30	-0110	-0750	-0910
2 X 31	-0111	-0751	-0911
2 X 32	-0112	-0752	-0912
2 X 33	-0113	-0753	-0913
2 X 34	-0114	-0754	-0914
2 X 35	-0115	-0755	-0915
2 X 36	-0116	-0756	-0916
2 X 37	-0117	-0757	-0917
2 X 38	-0118	-0758	-0918
2 X 39	▼ -0119	▼ -0759	▼ -0919
2 X 40	90131-0120	90131-0760	90131-0920

DIM C (+0.20) ±.008 (5.75) .226

DIM D (+0.25) ±.010 (4.50) .177

NON-STANDARD PRODUCTS

ADD DATUM
EC NO: S2017-0354
2016/12/13
DRWN:FC500
CHKD:GGH
2017/01/17
APPR:KHLIM
2017/01/18

QUALITY SYMBOLS
FA=0
FG=0
FB=0

GENERAL TOLERANCES (UNLESS SPECIFIED)

	mm	INCH
4 PLACES	± ---	± ---
3 PLACES	± ---	± ---
2 PLACES	± 0.20	± ---
1 PLACE	± ---	± ---
0 PLACE	± ---	± ---

ANGULAR ± 3 °
DRAFT WHERE APPLICABLE
MUST REMAIN WITHIN DIMENSIONS

DIMENSION STYLE
MM ONLY

DRAWN BY	DATE
DB	1987/07/16
CHECKED BY	DATE
DB	1987/07/16
APPROVED BY	DATE
MLONG	2012/02/24

MATERIAL NO.
SEE TABLE

SCALE
NTS

DESIGN UNITS
METRIC

THIRD ANGLE PROJECTION

TITLE
C GRID III DUAL ROW
STRAIGHT PIN HEADER

molex

DOCUMENT NO.
SD-90131-001

SHEET NO.
4 OF 8

THIS DRAWING CONTAINS INFORMATION THAT IS PROPRIETARY TO MOLEX INCORPORATED AND SHOULD NOT BE USED WITHOUT WRITTEN PERMISSION

CIRCUIT SIZE	PLATING TYPE A PART NO.	PLATING TYPE E PART NO.	PLATING TYPE F PART NO.
2 X 1	90131-0161	90131-0801	90131-0961
2 X 2	▲ -0162	-0802	▲ -0962
2 X 3	-0163	-0803	-0963
2 X 4	-0164	-0804	-0964
2 X 5	-0165	-0805	-0965
2 X 6	-0166	-0806	-0966
2 X 7	-0167	-0807	-0967
2 X 8	-0168	-0808	-0968
2 X 9	-0169	-0809	-0969
2 X 10	-0170	-0810	-0970
2 X 11	-0171	-0811	-0971
2 X 12	-0172	-0812	-0972
2 X 13	-0173	-0813	-0973
2 X 14	-0174	-0814	-0974
2 X 15	-0175	-0815	-0975
2 X 16	-0176	-0816	-0976
2 X 17	-0177	-0817	-0977
2 X 18	-0178	-0818	-0978
2 X 19	-0179	-0819	-0979
2 X 20	-0180	-0820	-0980
2 X 21	-0181	-0821	-0981
2 X 22	-0182	-0822	-0982
2 X 23	-0183	-0823	-0983
2 X 24	-0184	-0824	-0984
2 X 25	-0185	-0825	-0985
2 X 26	-0186	-0826	-0986
2 X 27	-0187	-0827	-0987
2 X 28	-0188	-0828	-0988
2 X 29	-0189	-0829	-0989
2 X 30	-0190	-0830	-0990
2 X 31	-0191	-0831	-0991
2 X 32	-0192	-0832	-0992
2 X 33	-0193	-0833	-0993
2 X 34	-0194	-0834	-0994
2 X 35	-0195	-0835	-0995
2 X 36	-0196	-0836	-0996
2 X 37	-0197	-0837	-0997
2 X 38	-0198	-0838	-0998
2 X 39	▼ -0199	-0839	▼ -0999
2 X 40	90131-0200	90131-0840	90131-1000

DIM C (±0.20) ±.008 (6.75) .266

DIM D (±0.25) ±.010 (4.50) .177

NON-STANDARD PRODUCTS

ADD DATUM EC NO: S2017-0354 DRWN:FCS00 2016/12/13 CHKD:CGOH 2017/01/17 APPR:KHL JM 2017/01/18	QUALITY SYMBOLS	GENERAL TOLERANCES (UNLESS SPECIFIED)	DIMENSION STYLE	SCALE	DESIGN UNITS	THIRD ANGLE PROJECTION	
	$F_A=0$ $F_G=0$ $F_P=0$	mm INCH 4 PLACES ± --- ± --- 3 PLACES ± --- ± --- 2 PLACES ± 0.20 ± --- 1 PLACE ± --- ± --- 0 PLACE ± --- ± ---	MM ONLY	NTS	METRIC	DRAWN BY: DB DATE: 1987/07/16 CHECKED BY: DB DATE: 1987/07/16 APPROVED BY: MLONG DATE: 2012/02/24	TITLE
	ANGULAR ± 3 ° DRAFT WHERE APPLICABLE MUST REMAIN WITHIN DIMENSIONS	SEE TABLE				C GRID III DUAL ROW STRAIGHT PIN HEADER molex DOCUMENT NO. SD-90131-001 SHEET NO. 5 OF 8	
						THIS DRAWING CONTAINS INFORMATION THAT IS PROPRIETARY TO MOLEX INCORPORATED AND SHOULD NOT BE USED WITHOUT WRITTEN PERMISSION	

	10	9	8	7	6	5	4	3	2	1		
		CIRCUIT SIZE	PLATING TYPE B PART NO.	PLATING TYPE C PART NO.	PLATING TYPE D PART NO.	PLATING TYPE G PART NO.	CIRCUIT SIZE	PLATING TYPE B PART NO.	PLATING TYPE C PART NO.	PLATING TYPE D PART NO.	PLATING TYPE G PART NO.	
F		2 X 1	90131-0281	90131-0441	90131-0601	90131-1081	2 X 1	90131-0201	90131-0361	90131-0521	90131-1001	F
		2 X 2	↑ -0282	↑ -0442	↑ -0602	↑ -1082	2 X 2	↑ -0202	↑ -0362	↑ -0522	↑ -1002	
		2 X 3	-0283	-0443	-0603	-1083	2 X 3	-0203	-0363	-0523	-1003	
		2 X 4	-0284	-0444	-0604	-1084	2 X 4	-0204	-0364	-0524	-1004	
		2 X 5	-0285	-0445	-0605	-1085	2 X 5	-0205	-0365	-0525	-1005	
		2 X 6	-0286	-0446	-0606	-1086	2 X 6	-0206	-0366	-0526	-1006	
		2 X 7	-0287	-0447	-0607	-1087	2 X 7	-0207	-0367	-0527	-1007	
		2 X 8	-0288	-0448	-0608	-1088	2 X 8	-0208	-0368	-0528	-1008	
		2 X 9	-0289	-0449	-0609	-1089	2 X 9	-0209	-0369	-0529	-1009	
E		2 X 10	-0290	-0450	-0610	-1090	2 X 10	-0210	-0370	-0530	-1010	E
		2 X 11	-0291	-0451	-0611	-1091	2 X 11	-0211	-0371	-0531	-1011	
		2 X 12	-0292	-0452	-0612	-1092	2 X 12	-0212	-0372	-0532	-1012	
		2 X 13	-0293	-0453	-0613	-1093	2 X 13	-0213	-0373	-0533	-1013	
		2 X 14	-0294	-0454	-0614	-1094	2 X 14	-0214	-0374	-0534	-1014	
		2 X 15	-0295	-0455	-0615	-1095	2 X 15	-0215	-0375	-0535	-1015	
		2 X 16	-0296	-0456	-0616	-1096	2 X 16	-0216	-0376	-0536	-1016	
		2 X 17	-0297	-0457	-0617	-1097	2 X 17	-0217	-0377	-0537	-1017	
		2 X 18	-0298	-0458	-0618	-1098	2 X 18	-0218	-0378	-0538	-1018	
		2 X 19	-0299	-0459	-0619	-1099	2 X 19	-0219	-0379	-0539	-1019	
D		2 X 20	-0300	-0460	-0620	-1100	2 X 20	-0220	-0380	-0540	-1020	D
		2 X 21	-0301	-0461	-0621	-1101	2 X 21	-0221	-0381	-0541	-1021	
		2 X 22	-0302	-0462	-0622	-1102	2 X 22	-0222	-0382	-0542	-1022	
		2 X 23	-0303	-0463	-0623	-1103	2 X 23	-0223	-0383	-0543	-1023	
		2 X 24	-0304	-0464	-0624	-1104	2 X 24	-0224	-0384	-0544	-1024	
		2 X 25	-0305	-0465	-0625	-1105	2 X 25	-0225	-0385	-0545	-1025	
		2 X 26	-0306	-0466	-0626	-1106	2 X 26	-0226	-0386	-0546	-1026	
		2 X 27	-0307	-0467	-0627	-1107	2 X 27	-0227	-0387	-0547	-1027	
		2 X 28	-0308	-0468	-0628	-1108	2 X 28	-0228	-0388	-0548	-1028	
		2 X 29	-0309	-0469	-0629	-1109	2 X 29	-0229	-0389	-0549	-1029	
C		2 X 30	-0310	-0470	-0630	-1110	2 X 30	-0230	-0390	-0550	-1030	C
		2 X 31	-0311	-0471	-0631	-1111	2 X 31	-0231	-0391	-0551	-1031	
		2 X 32	-0312	-0472	-0632	-1112	2 X 32	-0232	-0392	-0552	-1032	
		2 X 33	-0313	-0473	-0633	-1113	2 X 33	-0233	-0393	-0553	-1033	
		2 X 34	-0314	-0474	-0634	-1114	2 X 34	-0234	-0394	-0554	-1034	
		2 X 35	-0315	-0475	-0635	-1115	2 X 35	-0235	-0395	-0555	-1035	
		2 X 36	-0316	-0476	-0636	-1116	2 X 36	-0236	-0396	-0556	-1036	
		2 X 37	-0317	-0477	-0637	-1117	2 X 37	-0237	-0397	-0557	-1037	
		2 X 38	-0318	-0478	-0638	-1118	2 X 38	-0238	-0398	-0558	-1038	
B		2 X 39	↓ -0319	↓ -0479	↓ -0639	↓ -1119	2 X 39	↓ -0239	↓ -0399	↓ -0559	↓ -1039	B
		2 X 40	90131-0320	90131-0480	90131-0640	90131-1120	2 X 40	90131-0240	90131-0400	90131-0560	90131-1040	

DIM C (+0.20 / ±.008) (6.75) .266

DIM D (+0.20 / 0.30 / ±.008 / ±.012) (2.90) .114

DIM C (+0.20 / ±.008) (5.75) .226

DIM D (+0.20 / 0.30 / ±.008 / ±.012) (2.90) .114

**NON-STANDARD PRODUCTS
NOT FOR GENERAL RELEASE**

ADD DATUM
IEC NO: S2017-0354
DRWN:FC500 2016/12/13
CHKD:G0H 2017/01/17
APPR:KHL 2017/01/18

QUALITY SYMBOLS
F_A=0
F_B=0
F_C=0

GENERAL TOLERANCES (UNLESS SPECIFIED)
mm INCH
4 PLACES ± --- ± ---
3 PLACES ± --- ± ---
2 PLACES ± 0.20 ± ---
1 PLACE ± --- ± ---
0 PLACE ± --- ± ---
ANGULAR ± 3 °
DRAFT WHERE APPLICABLE
MUST REMAIN WITHIN DIMENSIONS

DIMENSION STYLE
MM ONLY
DRAWN BY DATE
DB 1987/07/16
CHECKED BY DATE
DB 1987/07/16
APPROVED BY DATE
MLONG 2012/02/24
MATERIAL NO.
SEE TABLE

SCALE
NTS
DESIGN UNITS
METRIC
THIRD ANGLE PROJECTION
C GRID III DUAL ROW
STRAIGHT PIN HEADER
molex
DOCUMENT NO. SD-90131-001
SHEET NO. 6 OF 8
THIS DRAWING CONTAINS INFORMATION THAT IS PROPRIETARY TO MOLEX
INCORPORATED AND SHOULD NOT BE USED WITHOUT WRITTEN PERMISSION

CIRCUIT SIZE	PLATING TYPE B PART NO.	PLATING TYPE C PART NO.	PLATING TYPE D PART NO.	PLATING TYPE G PART NO.
2 X 1	90131-0241	90131-0401	90131-0561	90131-1041
2 X 2	▲ -0242	▲ -0402	▲ -0562	▲ -1042
2 X 3	▲ -0243	▲ -0403	▲ -0563	▲ -1043
2 X 4	▲ -0244	▲ -0404	▲ -0564	▲ -1044
2 X 5	▲ -0245	▲ -0405	▲ -0565	▲ -1045
2 X 6	▲ -0246	▲ -0406	▲ -0566	▲ -1046
2 X 7	▲ -0247	▲ -0407	▲ -0567	▲ -1047
2 X 8	▲ -0248	▲ -0408	▲ -0568	▲ -1048
2 X 9	▲ -0249	▲ -0409	▲ -0569	▲ -1049
2 X 10	▲ -0250	▲ -0410	▲ -0570	▲ -1050
2 X 11	▲ -0251	▲ -0411	▲ -0571	▲ -1051
2 X 12	▲ -0252	▲ -0412	▲ -0572	▲ -1052
2 X 13	▲ -0253	▲ -0413	▲ -0573	▲ -1053
2 X 14	▲ -0254	▲ -0414	▲ -0574	▲ -1054
2 X 15	▲ -0255	▲ -0415	▲ -0575	▲ -1055
2 X 16	▲ -0256	▲ -0416	▲ -0576	▲ -1056
2 X 17	▲ -0257	▲ -0417	▲ -0577	▲ -1057
2 X 18	▲ -0258	▲ -0418	▲ -0578	▲ -1058
2 X 19	▲ -0259	▲ -0419	▲ -0579	▲ -1059
2 X 20	▲ -0260	▲ -0420	▲ -0580	▲ -1060
2 X 21	▲ -0261	▲ -0421	▲ -0581	▲ -1061
2 X 22	▲ -0262	▲ -0422	▲ -0582	▲ -1062
2 X 23	▲ -0263	▲ -0423	▲ -0583	▲ -1063
2 X 24	▲ -0264	▲ -0424	▲ -0584	▲ -1064
2 X 25	▲ -0265	▲ -0425	▲ -0585	▲ -1065
2 X 26	▲ -0266	▲ -0426	▲ -0586	▲ -1066
2 X 27	▲ -0267	▲ -0427	▲ -0587	▲ -1067
2 X 28	▲ -0268	▲ -0428	▲ -0588	▲ -1068
2 X 29	▲ -0269	▲ -0429	▲ -0589	▲ -1069
2 X 30	▲ -0270	▲ -0430	▲ -0590	▲ -1070
2 X 31	▲ -0271	▲ -0431	▲ -0591	▲ -1071
2 X 32	▲ -0272	▲ -0432	▲ -0592	▲ -1072
2 X 33	▲ -0273	▲ -0433	▲ -0593	▲ -1073
2 X 34	▲ -0274	▲ -0434	▲ -0594	▲ -1074
2 X 35	▲ -0275	▲ -0435	▲ -0595	▲ -1075
2 X 36	▲ -0276	▲ -0436	▲ -0596	▲ -1076
2 X 37	▲ -0277	▲ -0437	▲ -0597	▲ -1077
2 X 38	▲ -0278	▲ -0438	▲ -0598	▲ -1078
2 X 39	▲ -0279	▲ -0439	▲ -0599	▲ -1079
2 X 40	90131-0280	90131-0440	90131-0600	90131-1080

DIM C (±0.20) ±.008 (5.75) .226

DIM D (±0.25) ±.010 (4.50) .177

CIRCUIT SIZE	PLATING TYPE B PART NO.	PLATING TYPE C PART NO.	PLATING TYPE D PART NO.	PLATING TYPE G PART NO.
2 X 1	90131-0321	90131-0481	90131-0641	90131-1121
2 X 2	▲ -0322	▲ -0482	▲ -0642	▲ -1122
2 X 3	▲ -0323	▲ -0483	▲ -0643	▲ -1123
2 X 4	▲ -0324	▲ -0484	▲ -0644	▲ -1124
2 X 5	▲ -0325	▲ -0485	▲ -0645	▲ -1125
2 X 6	▲ -0326	▲ -0486	▲ -0646	▲ -1126
2 X 7	▲ -0327	▲ -0487	▲ -0647	▲ -1127
2 X 8	▲ -0328	▲ -0488	▲ -0648	▲ -1128
2 X 9	▲ -0329	▲ -0489	▲ -0649	▲ -1129
2 X 10	▲ -0330	▲ -0490	▲ -0650	▲ -1130
2 X 11	▲ -0331	▲ -0491	▲ -0651	▲ -1131
2 X 12	▲ -0332	▲ -0492	▲ -0652	▲ -1132
2 X 13	▲ -0333	▲ -0493	▲ -0653	▲ -1133
2 X 14	▲ -0334	▲ -0494	▲ -0654	▲ -1134
2 X 15	▲ -0335	▲ -0495	▲ -0655	▲ -1135
2 X 16	▲ -0336	▲ -0496	▲ -0656	▲ -1136
2 X 17	▲ -0337	▲ -0497	▲ -0657	▲ -1137
2 X 18	▲ -0338	▲ -0498	▲ -0658	▲ -1138
2 X 19	▲ -0339	▲ -0499	▲ -0659	▲ -1139
2 X 20	▲ -0340	▲ -0500	▲ -0660	▲ -1140
2 X 21	▲ -0341	▲ -0501	▲ -0661	▲ -1141
2 X 22	▲ -0342	▲ -0502	▲ -0662	▲ -1142
2 X 23	▲ -0343	▲ -0503	▲ -0663	▲ -1143
2 X 24	▲ -0344	▲ -0504	▲ -0664	▲ -1144
2 X 25	▲ -0345	▲ -0505	▲ -0665	▲ -1145
2 X 26	▲ -0346	▲ -0506	▲ -0666	▲ -1146
2 X 27	▲ -0347	▲ -0507	▲ -0667	▲ -1147
2 X 28	▲ -0348	▲ -0508	▲ -0668	▲ -1148
2 X 29	▲ -0349	▲ -0509	▲ -0669	▲ -1149
2 X 30	▲ -0350	▲ -0510	▲ -0670	▲ -1150
2 X 31	▲ -0351	▲ -0511	▲ -0671	▲ -1151
2 X 32	▲ -0352	▲ -0512	▲ -0672	▲ -1152
2 X 33	▲ -0353	▲ -0513	▲ -0673	▲ -1153
2 X 34	▲ -0354	▲ -0514	▲ -0674	▲ -1154
2 X 35	▲ -0355	▲ -0515	▲ -0675	▲ -1155
2 X 36	▲ -0356	▲ -0516	▲ -0676	▲ -1156
2 X 37	▲ -0357	▲ -0517	▲ -0677	▲ -1157
2 X 38	▲ -0358	▲ -0518	▲ -0678	▲ -1158
2 X 39	▲ -0359	▲ -0519	▲ -0679	▲ -1159
2 X 40	90131-0360	90131-0520	90131-0680	90131-1160

DIM C (±0.20) ±.008 (6.75) .266

DIM D (±0.25) ±.010 (4.50) .177

NON-STANDARD PRODUCTS
NOT FOR GENERAL RELEASE

ADD DATUM EC NO: S2017-0354 DRWN:FC00 CHKD:CG0H APPR:KHLIM	2016/12/13 2017/01/17 2017/01/18	DESCRIPTION REV	QUALITY SYMBOLS F=0 F=0 F=0
--	--	--------------------	--------------------------------------

GENERAL TOLERANCES (UNLESS SPECIFIED)	
mm	INCH
4 PLACES ± ---	± ---
3 PLACES ± ---	± ---
2 PLACES ± 0.20	± ---
1 PLACE ± ---	± ---
0 PLACE ± ---	± ---
ANGULAR ± 3°	
DRAFT WHERE APPLICABLE MUST REMAIN WITHIN DIMENSIONS	

DIMENSION STYLE	
MM ONLY	
DRAWN BY	DATE
DB	1987/07/16
CHECKED BY	DATE
DB	1987/07/16
APPROVED BY	DATE
MLONG	2012/02/24
MATERIAL NO.	DOCUMENT NO.
SEE TABLE	SD-90131-001
SIZE A3	THIS DRAWING CONTAINS INFORMATION THAT IS PROPRIETARY TO MOLEX INCORPORATED AND SHOULD NOT BE USED WITHOUT WRITTEN PERMISSION

SCALE NTS	DESIGN UNITS METRIC	THIRD ANGLE PROJECTION
C GRID III DUAL ROW STRAIGHT PIN HEADER		
molex		
SHEET NO. 7 OF 8		

CIRCUIT SIZE	PLATING TYPE A PART NO.	PIN PART NUMBER	WAFER PART NUMBER	DIM C ^(±0.20) ±.008	DIM D ^(±0.30) ±.008 -.012
2 X 6	90131-3126	90129-2008	90131-0040	(14.60) .575	(2.38) .094
2 X 36	90131-3128	90129-2008	90131-0040	(14.60) .575	(2.38) .094
2 X 40	90131-3127	90129-2008	90131-0040	(14.60) .575	(2.38) .094

STANDARD PRODUCTS

ADD DATUM EC NO: S2017-0354 DRWN:FC500 CHKD:CG0H APPR:KHLIM	2016/12/13 2017/01/17 2017/01/18	DESCRIPTION REV	QUALITY SYMBOLS	GENERAL TOLERANCES (UNLESS SPECIFIED)	DIMENSION STYLE	SCALE	DESIGN UNITS	THIRD ANGLE PROJECTION	
			$\nabla = 0$ $\nabla = 0$ $\nabla = 0$	mm INCH 4 PLACES ± --- ± --- 3 PLACES ± --- ± --- 2 PLACES ± 0.20 ± --- 1 PLACE ± --- ± --- 0 PLACE ± --- ± ---	MM ONLY	NTS	METRIC	DRAWN BY DATE DB 1987/07/16 CHECKED BY DATE DB 1987/07/16 APPROVED BY DATE MLONG 2012/02/24	TITLE C GRID III DUAL ROW STRAIGHT PIN HEADER
			ANGULAR ± 3 ° DRAFT WHERE APPLICABLE MUST REMAIN WITHIN DIMENSIONS	SEE TABLE	MATERIAL NO. SEE TABLE	DOCUMENT NO. SD-90131-001	SHEET NO. 8 OF 8		
			THIS DRAWING CONTAINS INFORMATION THAT IS PROPRIETARY TO MOLEX INCORPORATED AND SHOULD NOT BE USED WITHOUT WRITTEN PERMISSION					molex	