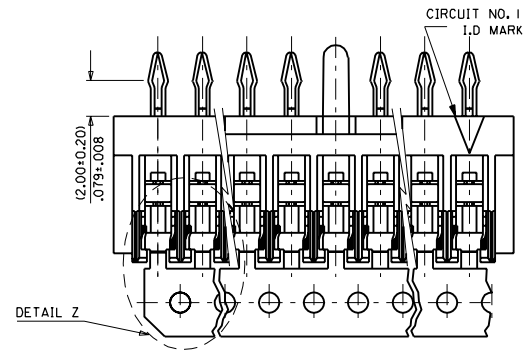
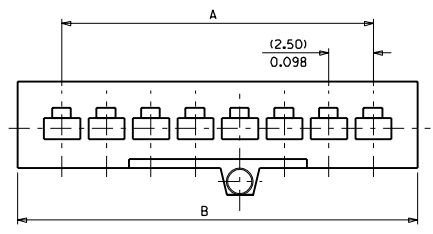
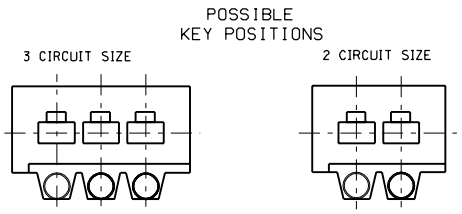
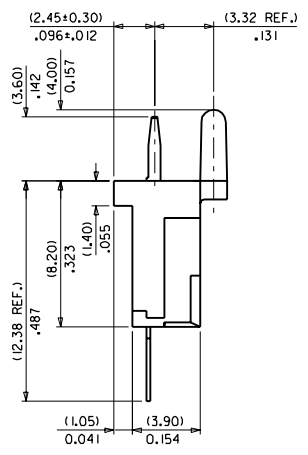
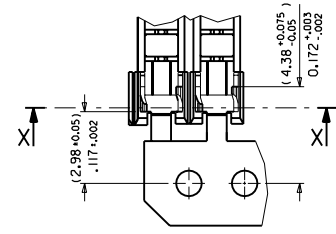
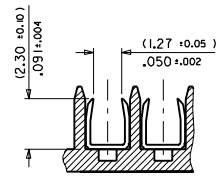
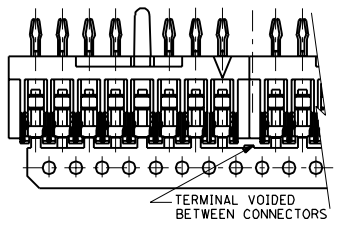
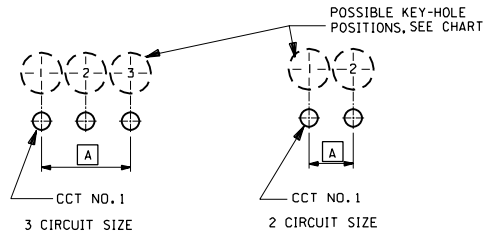
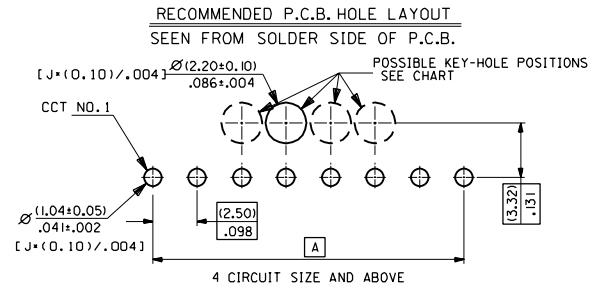


PART NO. SEE CHART
 DWG. NO. SDA-91226E



NOTES:
 1. MATERIAL:
 HOUSING: POLYESTER G.E. VALOX 457, UL 94 V-0
 TERMINAL: PHOSPHOR BRONZE,
 PLATING: HOT TIN (2.5-4.5UM) / .100-.180UM.

FOR PREVIOUS DRAWING ISSUES SEE MRI.

polarizing key added
 ECN E90349
 99-03-02 LK

DIMENSIONS SHOWN (METRIC) INCH	
UNLESS OTHERWISE SPECIFIED TOLERANCES: ANGULAR ± 5°	
INCH	(METRIC)
3 PLACE ± .008	
2 PLACE ± .	± .20
1 PLACE ±	±
DRAFT WHERE APPLICABLE MUST REMAIN WITHIN DIMENSIONS	
DESIGN DIMENSION (PRIMARY)	<input checked="" type="checkbox"/> (MM) <input type="checkbox"/> IN.
EQUIVALENT DIMENSION (SECONDARY)	<input type="checkbox"/> (MM) <input checked="" type="checkbox"/> IN.

DRWG BY HL
 CHK'D BY
 APP'D BY
 SCALE 4 : 1

REVISE ONLY ON CAD SYSTEM		SHL	REV.
CAD/CAM FILENAME S91226X1 DGN	THIS DRAWING CONTAINS INFORMATION THAT IS PROPRIETARY TO MOLEX INC. & SHOULD NOT BE USED WITHOUT WRITTEN PERMISSION		
TITLE 2.5MM PITCH BOARD-IN ASSEMBLY			
molex MOLEX EUROPE		SHEET NO. DATE 1 OF 2 29/10/96	
PART NO. SEE SHEET 2	DWG NO. SDA-91226	SIZE B	

PART NO. SEE CHART
 DWG. NO. SDA-91226E

CCT. SIZE	PART NO.	■	■	KEY AND P.C.B HOLE POSITION CCT NO.	NO. OF CONN. IN CHAIN	VOID POSITION CCT NO.
7	91226-0051			-		-
	-0023			5		-
	-0022	(15.00)	(20.00)	4	4	-
	-0021	.591	.787	3		-
	-0020			2		-
6	-0050			-		-
	-0019			5		-
	-0018	(12.50)	(17.50)	4	4	-
	-0017	.492	.689	3		-
	-0016			2		-
5	-9014			1		2 & 4
	-9013			2		2 & 4
	-0049			-		-
	-0015	(10.00)	(15.00)	4	5	-
	-0014	.394	.591	3		-
4	-9012			1		2 & 3
	-9011			4		2 & 3
	-9010			3		2 & 3
	-9009			2		2 & 3
	-9008	(7.50)	(12.50)	1	6	3
	-0048	.295	.492	-		-
	-0011			4		-
	-0010			3		-
3	-0009			2		-
	-0008			1		-
	-0047			-		-
	-0007	(5.00)	(10.00)	-	8	-
	-0006	.197	.394	3		-
2	-0005			2		-
	-0004			1		-
	-0046			-		-
	-0003	(2.50)	(7.50)	-	10	-
	-0002	.098	.295	2		-
	91226-0001			1		-

20	91226-0061	(47.50) 1.870	(52.50) 2.067	-	1	-
16	-0070	(37.50) 1.478	(42.50) 1.674	4	1	-
	-0060			-		-
15	-0059	(35.00) 1.378	(40.00) 1.574	7	2	-
14	-0058			-		-
	-0045	(32.50) 1.280	(37.50) 1.476	7	2	-
	-0044			6		-
13	-0057			-		-
	-0043			7		-
	-0042	(30.00) 1.181	(35.00) 1.378	6	2	-
	-0041			5		-
12	-0056			7		-
	-0040			7		-
	-0039	(27.50) 1.083	(32.50) 1.280	6	2	-
	-0038			5		-
11	-0055			-		-
	-0037			6		-
	-0036	(25.00) .984	(30.00) 1.181	5	2	-
	-0035			4		-
10	-0054			-		-
	-0034			6		-
	-0033	(22.50) .886	(27.50) 1.083	5	3	-
	-0032			4		-
9	-0053			-		-
	-0031			6		-
	-0030	(20.00) .787	(25.00) .984	5	3	-
	-0029			4		-
8	-0028			3		-
	-0052			-		-
	-0027			6		-
	-0026	(17.50) .689	(22.50) .886	5	3	-
	-0025			4		-
	91226-0024			3		-

CCT. SIZE PART NO. ■ ■ KEY AND P.C.B HOLE POSITION CCT NO. NO. OF CONN. IN CHAIN VOID POSITION CCT NO.

REVISE ONLY ON CAD SYSTEM SHL REV.

SEE SHEET 1	LTR	DIMENSIONS SHOWN (METRIC) INCH UNLESS OTHERWISE SPECIFIED TOLERANCES: ANGULAR ± 1/2° INCH (METRIC) 3 PLACE ± . () 2 PLACE ± . () 1 PLACE ± () DRAFT WHERE APPLICABLE MUST REMAIN WITHIN DIMENSIONS	DRWG BY HL CHK'D BY APP'D BY SCALE 4:1	CAD/CAM FILENAME S91226X2 DGN THIS DRAWING CONTAINS INFORMATION THAT IS PROPRIETARY TO MOLEX INC. & SHOULD NOT BE USED WITHOUT WRITTEN PERMISSION	
		TITLE 2.5MM PITCH BOARD-IN ASSEMBLY			
		DESIGN DIMENSION <input type="checkbox"/> (MM) (PRIMARY) <input type="checkbox"/> IN.		SHEET NO. DATE 20F 2 96/10/26	
		EQUIVALENT DIMENSION <input type="checkbox"/> (MM) (SECONDARY) <input type="checkbox"/> IN.		MOLEX MOLEX EUROPE PART NO. SEE CHART DWG NO. SDA-91226E SIZE B	