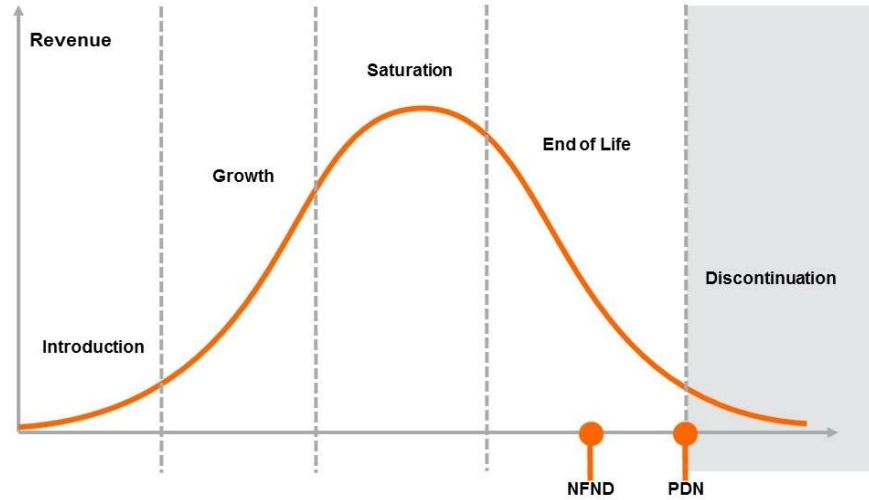


Light is OSRAM

Not For New Designs
OS-NFND-2022-008

6/15/2022

Expected discontinuation date:	10/1/2022
Reason:	Consolidation to DURIS E5 Standard
OSRAM OS Expectations:	



Please direct your feedback to your local Sales office.

Not for new design products			Recommended Replacement			
Device	Brand	Datasheet Ordering Code	Device	Brand	Datasheet Ordering Code	Expected PDN start
GW JDSTS2.EM-H3H7-A838-1-65-B-2-R33	DURIS E	Q65112A8863	GW JDSTS2.EM-H3H6-A838-1-65-2-R33	DURIS E	Q65112A8871	October 2022
GW JDSTS2.EM-H4H7-A737-1-65-B-2-R33	DURIS E	Q65112A8864	GW JDSTS2.EM-H4H7-A737-1-65-2-R33	DURIS E	Q65112A8872	October 2022
GW JDSTS2.EM-H5H8-A636-1-65-B-2-R33	DURIS E	Q65112A8865	GW JDSTS2.EM-H4H7-A636-1-65-2-R33	DURIS E	Q65112A8873	October 2022
GW JDSTS2.EM-H6H8-A535-1-65-B-2-R33	DURIS E	Q65112A8866	GW JDSTS2.EM-H5H8-A535-1-65-2-R33	DURIS E	Q65112A8874	October 2022
GW JDSTS2.EM-H6H8-A333-1-65-B-2-R33	DURIS E	Q65112A8867	GW JDSTS2.EM-H5H8-A333-1-65-2-R33	DURIS E	Q65112A8875	October 2022
GW JDSTS2.EM-H5H8-A232-1-65-B-2-R33	DURIS E	Q65112A8869	GW JDSTS2.EM-H5H8-A232-1-65-2-R33	DURIS E	Q65112A8876	October 2022
GW JDSTS2.EM-H5H8-A131-1-65-B-2-R33	DURIS E	Q65112A8870	GW JDSTS2.EM-H5H8-A131-1-65-2-R33	DURIS E	Q65112A8877	October 2022
GW JDSTS2.EM-H6H8-XX53-1-65-B-2-R33	DURIS E	Q65112A8972	GW JDSTS2.EM-H5H8-XX53-1-65-2-R33	DURIS E	Q65112A8993	October 2022
GW JDSTS2.EM-H5H8-XX51-1-65-B-2-R33	DURIS E	Q65112A8984	GW JDSTS2.EM-H5H8-XX51-1-65-2-R33	DURIS E	Q65112A8994	October 2022
GW JDSTS2.EM-H3H7-XX58-1-65-B-2-R33	DURIS E	Q65112A8988	GW JDSTS2.EM-H3H6-XX58-1-65-2-R33	DURIS E	Q65112A8998	October 2022
GW JDSTS2.EM-H4H7-XX57-1-65-B-2-R33	DURIS E	Q65112A8989	GW JDSTS2.EM-H4H7-XX57-1-65-2-R33	DURIS E	Q65112A8997	October 2022
GW JDSTS2.EM-H5H8-XX56-1-65-B-2-R33	DURIS E	Q65112A8990	GW JDSTS2.EM-H4H7-XX56-1-65-2-R33	DURIS E	Q65112A8996	October 2022
GW JDSTS2.EM-H6H8-XX55-1-65-B-2-R33	DURIS E	Q65112A8991	GW JDSTS2.EM-H5H8-XX55-1-65-2-R33	DURIS E	Q65112A8995	October 2022
GW JDSTS2.EM-H5H8-XX52-1-65-B-2-R33	DURIS E	Q65112A8992	GW JDSTS2.EM-H5H8-XX52-1-65-2-R33	DURIS E	Q65112A8985	October 2022