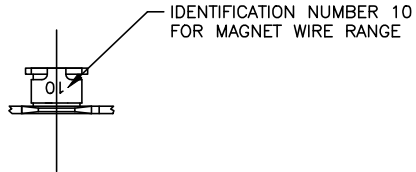
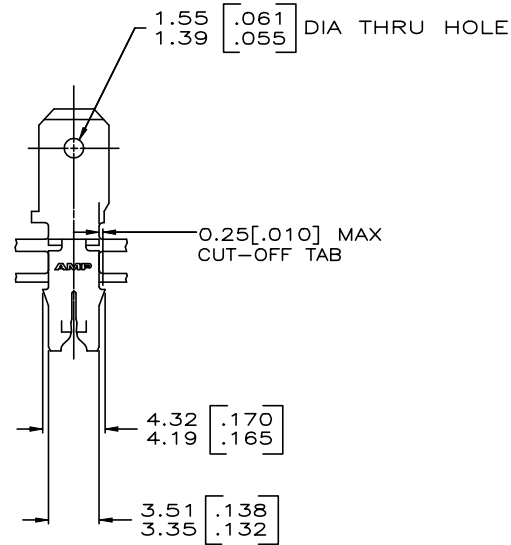
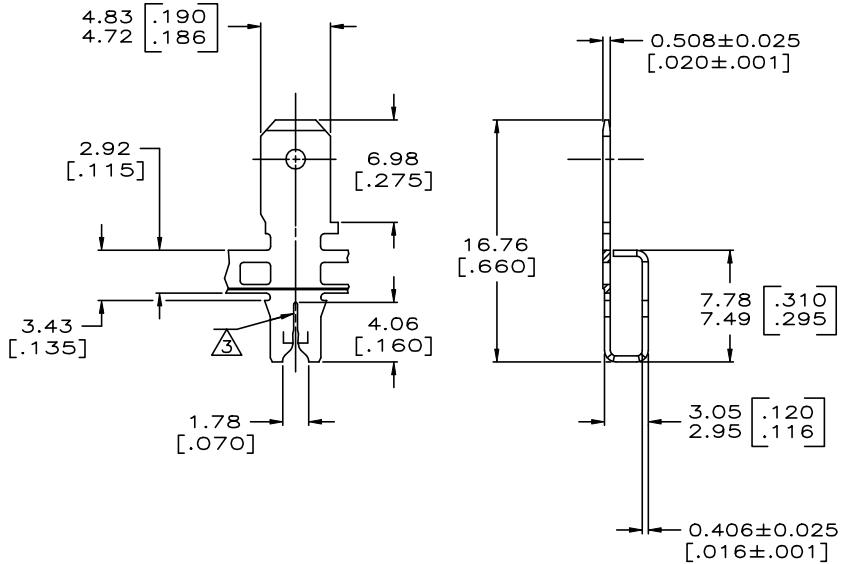


THIS DRAWING IS UNPUBLISHED. RELEASED FOR PUBLICATION
 © COPYRIGHT - BY TE CONNECTIVITY ALL RIGHTS RESERVED.

REVISIONS					
P	LYR	DESCRIPTION	DATE	DWN	APVD
	C4	REVISED PER ECR-19-013909	30SEP2019	PC	MB



- 1 CONTINUOUS STRIP ON REELS WITH TERMINALS LOCATED ON 5.59±0.08 [.220±.003] CENTERS.
 - 2 AFTER INSERTION INTO PLASTIC HOLDER TAB PORTION MUST BE BENT 45° TO 90° OR POTTED-IN TO PREVENT PULL-OUT WHEN MATING RECEPTACLE IS DISCONNECTED.
- △ 3 SLOT TERMINATES EITHER SINGLE OR DOUBLE MAGNET WIRE OF THE SAME SIZE AND TYPE.
 COPPER RANGE: 0.36-0.57mm [#27-#23] AWG.
 ALUMINIUM RANGE: 0.51-0.64mm [#24-#22] AWG.
 ALUMINIUM WIRE RANGE APPLIES FOR POST TIN PLATED PART NUMBERS ONLY.
- △ 4 TIN PLATE.
- △ 5 THIS PART IS REELED WITH INTERLAYER PAPER.



△ 4	63585-2 △ 5
△ 4	63585-1
FINISH	PART NUMBER

THIS DRAWING IS A CONTROLLED DOCUMENT.		DWN MICHAEL S. FEHNER 7FE82005	63585-2 △ 5	
		CHK KURT A. RANDOLPH 7FE82005	63585-1	
		APVD KURT A. RANDOLPH 7FE82005	FINISH PART NUMBER	
DIMENSIONS: INCHES		PRODUCT SPEC 108-2012	TE Connectivity	
TOLERANCES UNLESS OTHERWISE SPECIFIED:		APPLICATION SPEC 114-2046	TAB, 4.75 [.187] FASTON, 300 SERIES MAG-MATE	
0 PLC ± -		WEIGHT 0	SIZE A2	CAGE CODE C=63585
1 PLC ± -		CUSTOMER DRAWING	SCALE 4:1	SHEET 1 of 1
2 PLC ± -				REV C4
3 PLC ± 0.28 [.010]				
4 PLC ± -				
ANGLES ± -	SEE TABLE			