

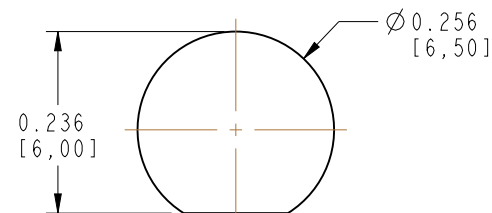
NOTES:

- MATERIALS AND FINISHES:
SMA STR BHD PLUG - BRASS, GOLD PLATING
MMCX STR PLUG - BRASS, GOLD PLATING
CABLE - RG 178/U
- ELECTRICAL:
A. IMPEDANCE: 50 OHM
- PACKAGING:
A. QUANTITY: SINGLE PACK
B. MARKING: BAG TO BE MARKED
"AMPHENOL RF, 245110-08-XX.XX AND DATE CODE"

THIRD ANGLE PROJ.

REVISIONS

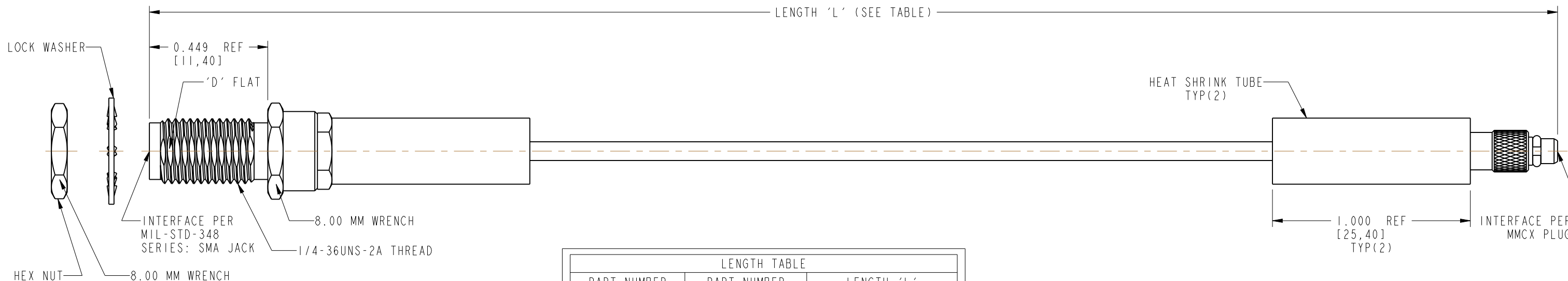
REV	DESCRIPTION	DATE	ECO	APPR
A	RELEASE TO MFG.	07-Nov-12	--	RV
B	FORMAT UPDATED, 48.00", METRIC LENGTHS ADDED & HST LENGTHS ADDED IN LENGTH TABLE	21-Oct-16	2201	VK
C	3.00" LENGTH ADDED, LENGTH TABLE, OVERALL DIMENSION POSITION & HST LENGTH UPDATED	17-Dec-19	13984	VR



RECOMMENDED MOUNTING HOLE DIMENSIONS



SCALE 0.700



LENGTH TABLE		
PART NUMBER (IMPERIAL)	PART NUMBER (METRIC)	LENGTH 'L' IN INCHES [METERS]
245110-08-03.00	-	3.00 [0.076]
245110-08-06.00	-	6.00 [0.152]
-	245110-08-M0.25	9.84 [0.250]
245110-08-12.00	-	12.00 [0.305]
245110-08-18.00	-	18.00 [0.457]
-	245110-08-M0.50	19.69 [0.500]
245110-08-24.00	-	24.00 [0.610]
-	245110-08-M0.75	29.53 [0.750]
245110-08-36.00	-	36.00 [0.914]
-	245110-08-M1.00	39.37 [1.000]
245110-08-48.00	-	48.00 [1.219]
-	245110-08-M2.00	78.74 [2.000]
-	245110-08-M4.00	157.48 [4.000]

TOLERANCE TABLE	
LENGTH IN INCHES/FT [METERS]	TOLERANCE
0" - 23.90" [0 - 0.607]	±0.25" [0.006]
24.00" - 59.00" [0.610 - 1.499]	±0.50" [0.013]
5.0' - 24.9' [1.524 - 7.617]	±2.5%
25.0' & UP [7.620 & UP]	±5.0%

DESIGN REQUIREMENTS:

- FREQUENCY: _____ - _____ GHz CONTINUITY
- VSWR: _____: 1 MAX. HI-POT: 300 VRMS
- INS. LOSS: _____ dB MAX. OTHER

CUSTOMER OUTLINE DRAWING

ALL OTHER SHEETS ARE FOR INTERNAL USE ONLY

UNLESS OTHERWISE SPECIFIED, DIMENSIONS ARE IN INCHES AND TOLERANCES ARE: 2 PLACE DECIMAL 3 PLACE DECIMAL ANGLES ±.015 (0.381 mm) ±.005 (0.127 mm) ± 1°	MATERIAL	DRAWN	DATE	TITLE SMA STR BHD JACK TO MMCX STR PLUG USING RG 178/U CABLE VARIOUS LENGTH		Amphenol RF www.amphenolrf.com	
	SEE NOTES	VIJI K	03-Oct-16				
NOTICE - These drawings, specifications, or other data (1) are, and remain the property of Amphenol corp. (2) must be returned upon request; and (3) are confidential and not to be disclosed to any person other than those to whom they are given by Amphenol Corp. the furnishing of these drawings, specifications, or other data by Amphenol Corp., or to any other person to anyone for any purpose is not to be regarded by implication or otherwise in any manner licensing, granting rights to permitting such holder or any other person to manufacture, use or sell any product, process or design, patented or otherwise, that may in any way be related to or disclosed by said drawings, specifications, or other data.	REFERENCE EAR #	ENGINEER	DATE	SCALE: 2.7:1.0		DRAWING NO. 245110-08-XX-XX	
	CONFIGURATION LEVEL: In Work	K.CAPOZZI	RAJAVIJAYAN S	07-Nov-12	SHEET 2 OF 2		ITEM NO. 245110-08-XX-XX
	FINISH		APPROVED	DATE	DWG SIZE	REV	PART NO. 245110-08-XX-XX
			17-Dec-19	B	C		