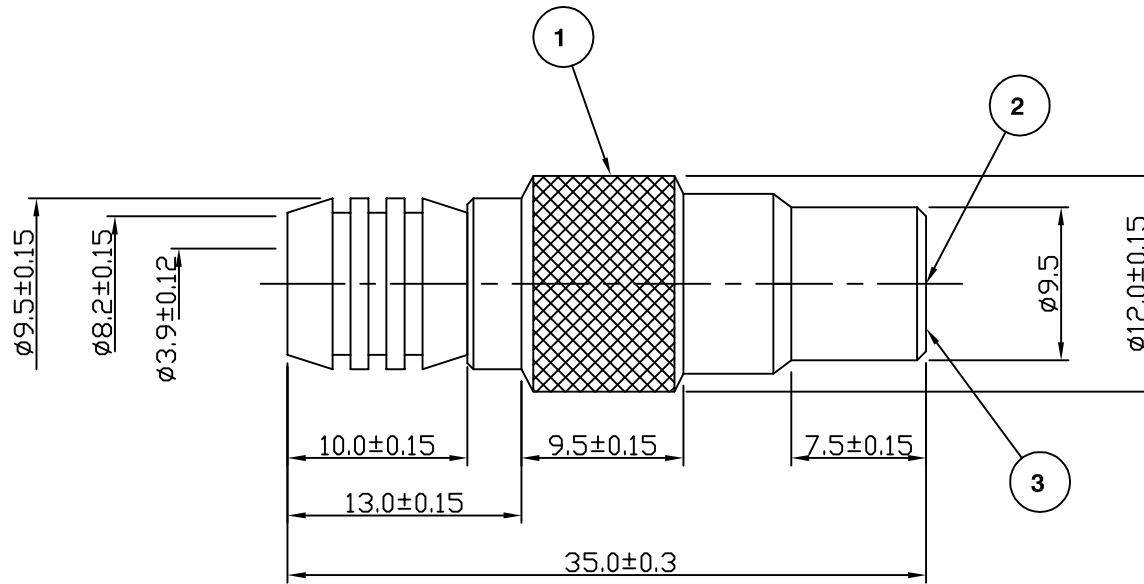


RoHS COMPLIANT



**Electrical Characteristics**

Nominal Impedance: 60-75 ohms  
 Frequency Range: DC to 1 GHz  
 Operating Voltage (rms): 4000 V maximum  
 Insulation Resistance: 10000 megohms minimum

**Mechanical Characteristics**

Mating Cycles: 50 cycles (subject to cable)

**Environmental Characteristics**

Temperature Range: -55 °C to +85 °C

	PART	DESCRIPTION
1	Body	Brass, nickel plated
2	Contact	Brass, nickel plated
3	Dielectric	POM

Up Issue	SN	3	21 Aug 03
CAD Issue	SN	2	14 Feb 02
First Issue	SN	1	19 April 01
DESCRIPTION OF REVISION	APPVD	ISS	DATE

**For stripping and assembly instructions see Drawing Number: VAIE1101**



Cinch Connectivity Solutions  
 7-13 Russel Way,  
 Widford Industrial Estate,  
 Chelmsford, Essex,  
 CM1 3AA, UK.  
 Tel: +44 (0) 1245 359515  
 Fax: +44 (0) 1245 358938

SCALE: Not To Scale

DIMENSIONS: mm

TOLERANCES:  
 ± 0.2mm unless  
 otherwise stated

DRAWN BY:

S Nash

CHECKED BY:

P Couzens

APPROVED BY:

P Couzens

DATE:

21 Aug 03

TITLE:

**Euro Crimp Plug for RG59**

PART NUMBER:

**VE10-2031**

PAGE: 1 of 1