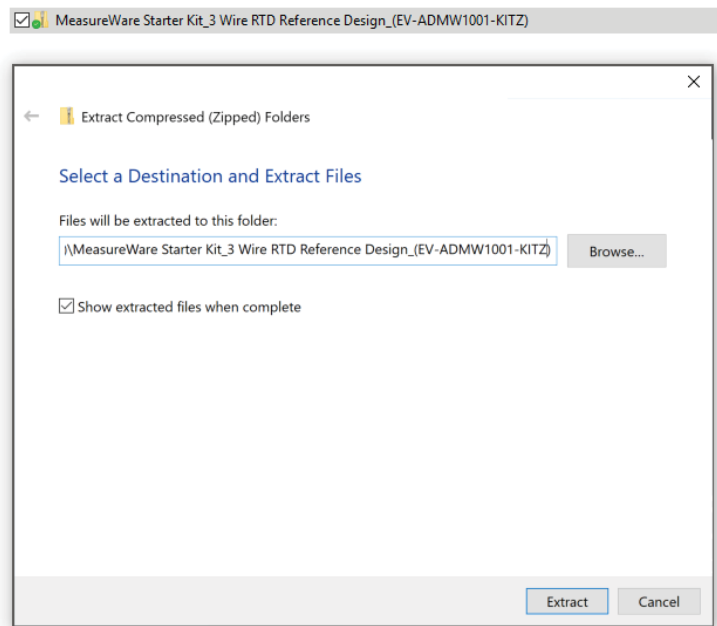




MeasureWare Starter Kit (EV-ADMW1001-KITZ) Quick Start Guide

1. Firstly save the downloaded 3 Wire RTD reference file to a known location on your PC and extract the contents.



2. Once you have the reference file go to <https://www.analog.com/en/measureware/software-studio/measureware-lab.html> and download the MeasureWare Lab Installer. Once installed open the application using the Desktop icon.

ADI MeasureWare
INTERPRET THE WORLD

OUR SOLUTIONS | SOFTWARE STUDIO | MARKETPLACE | KNOWLEDGE CENTER | PRODUCTION READY | SUPPORT

MeasureWare Lab - Desktop & Mobile

MeasureWare Lab allows you to set up, stream and view data from your MeasureWare measurement system. MeasureWare Lab is cloud-connected, allowing you to access the specific design file you've customized for your application. The desktop application is more fully featured, and the mobile apps are optimized to get your Swift Kit up and running quickly.

MeasureWare Lab Desktop Application

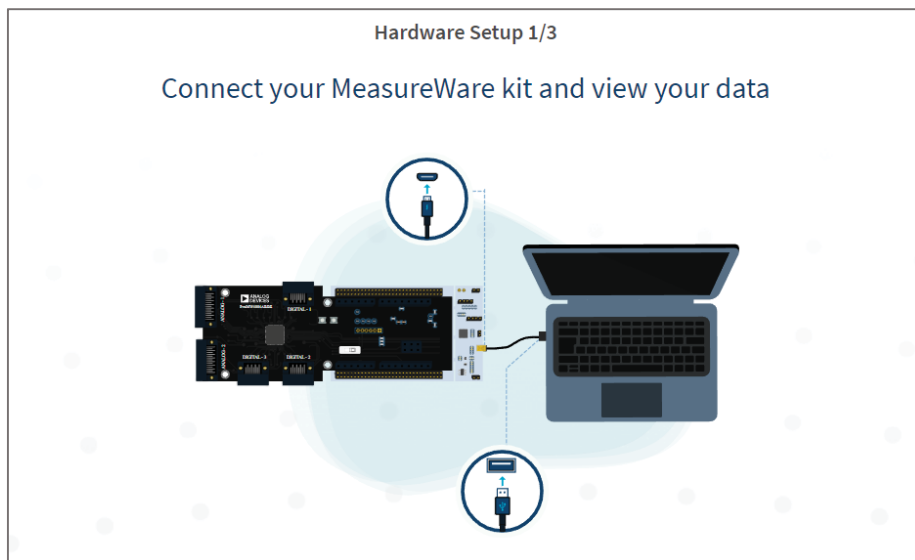
- Advanced capability
- Use for low-volume programming

[Download Desktop App](#)

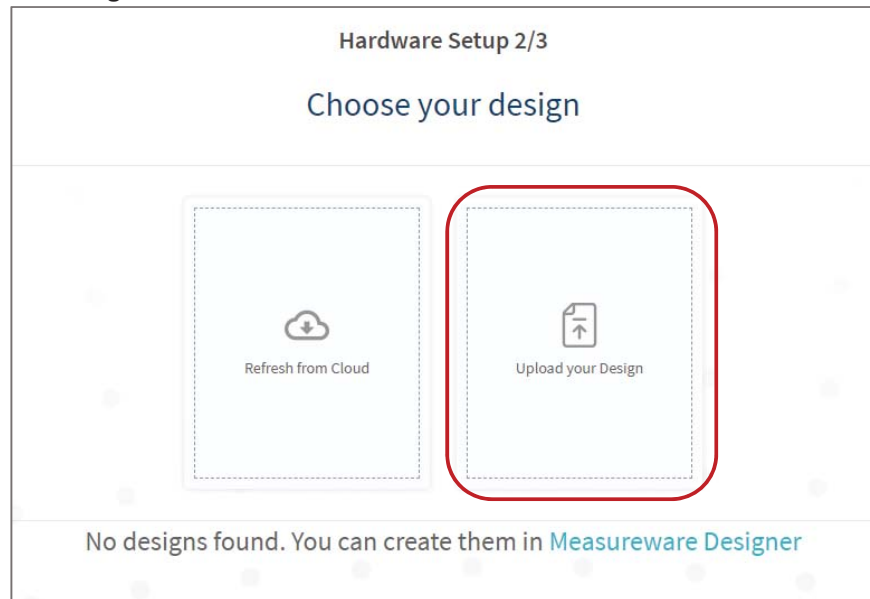
3. Once prompted sign up to create your [My Analog Account](#). You can then save and track your designs.



4. Plug together your MeasureWare kit and connect the kit to your computer using the USB cable.



5. In [MeasureWare Lab](#) click “upload your design” and open the unzipped preconfigured reference design downloaded earlier and select the JSON file.



6. Once your reference design is uploaded attach your 3 wire RTD sensor to the ProBoard and proceed to the measurement dashboard.

