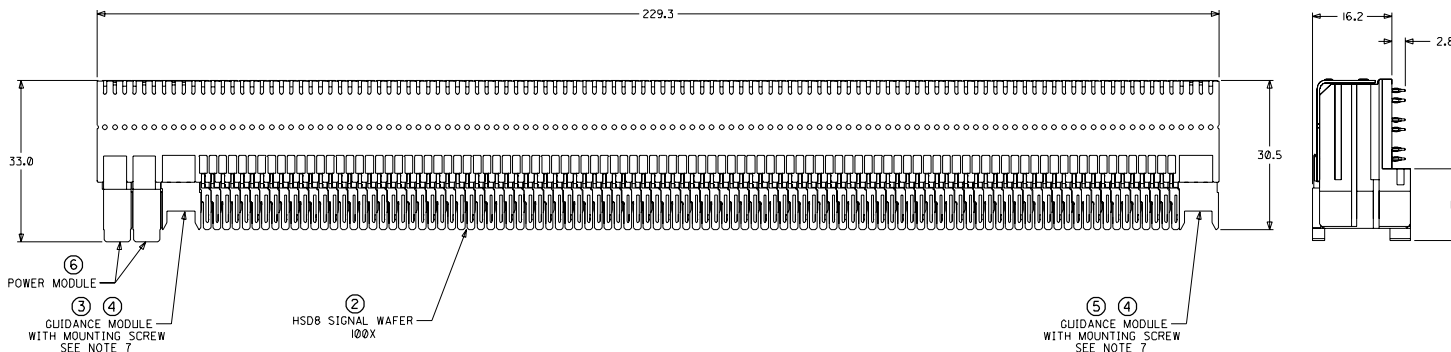
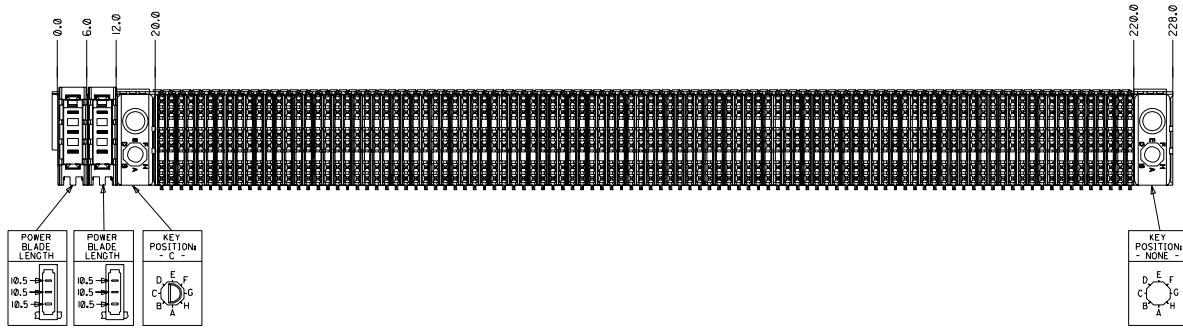


CUSTOMER: KIRANA

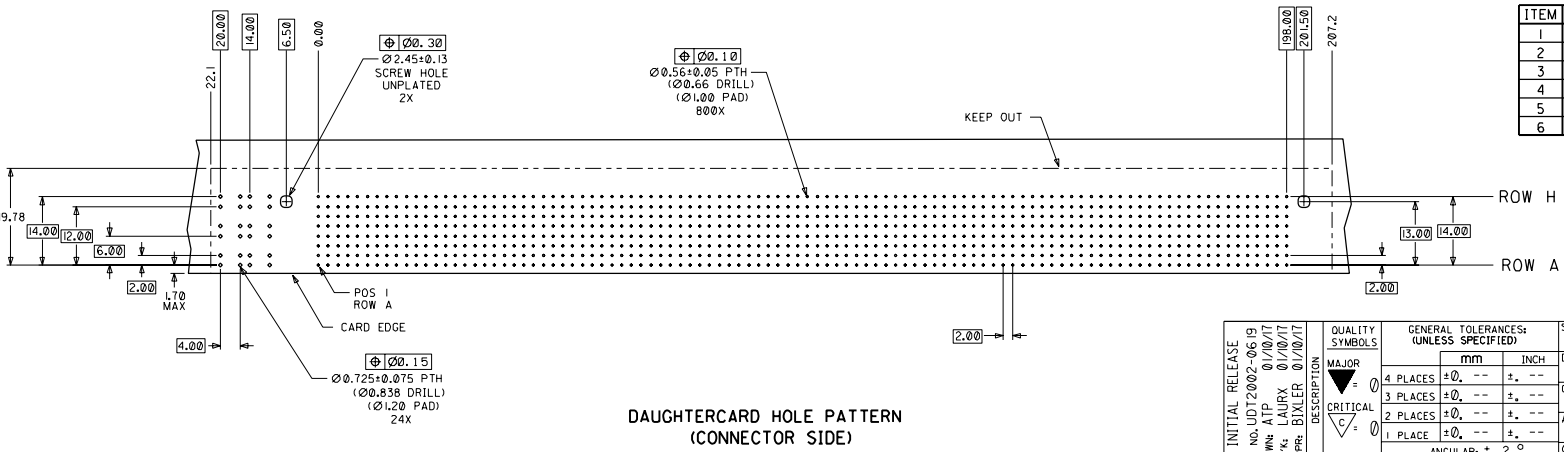


NOTES: (UNLESS OTHERWISE SPECIFIED)

1. MATERIALS: HOUSING - LIQUID CRYSTAL POLYMER (LCP), GLASS-FILLED, UL94V-0, BLACK. TERMINALS - HIGH PERFORMANCE COPPER ALLOY. STIFFENER - STAINLESS STEEL.
2. FINISH: SELECTIVE GOLD (Au) IN CONTACT AREA, 0.00076mm MINIMUM THICKNESS; SELECTIVE TIN/LEAD (Sn/Pb) ON PCB TAILS, NICKEL (Ni) OVERALL.
3. REFER TO MOLEX PRODUCT SPECIFICATION PS-74031-999 FOR PERFORMANCE SPECIFICATIONS.
4. REFER TO MOLEX DOCUMENT SD-74681-002 FOR ADDITIONAL DETAIL ON THE HS08 SIGNAL WAFER.
5. REFER TO MOLEX DOCUMENT SD-74037-006 FOR ADDITIONAL DETAIL ON THE GUIDANCE MODULE.
6. REFER TO MOLEX DOCUMENT SD-74026-002 FOR ADDITIONAL DETAIL ON THE POWER MODULE.
7. MOUNTING SCREWS WILL BE BAGGED WITH EACH CONNECTOR.
8. PARTS ARE PACKAGED IN TUBES PER PK-70873-5041.



ITEM	PART NUMBER	DESCRIPTION	QTY
1	74046-0229	STIFFENER	1
2	74681-0001	HSD8 SIGNAL WAFER	100
3	74037-8003	POLARIZING/GUIDE MODULE	1
4	73726-0000	GUIDE MODULE MNTG SCREW	2
5	74037-0008	POLARIZING/GUIDE MODULE	1
6	74026-8333	POWER MODULE	2



DAUGHTERCARD HOLE PATTERN (CONNECTOR SIDE)

INITIAL RELEASE EC NO. JDT2002-06 (9) DRAWN: ATP 01/10/17 CHKD: LAURX 01/10/17 APPR: BIXLER 01/10/17	QUALITY SYMBOLS MAJOR: ① CRITICAL: ②	GENERAL TOLERANCES (UNLESS SPECIFIED) mm INCH	SCALE: 2:1 DESIGN UNITS: mm INCH	DIMENSIONS: mm INCH THIRD ANGLE PROJECTION	SHT: REV
	DRAWN BY & DATE: ATP 01/10/17 CHECKED BY & DATE: LAURX 01/10/17 APPROVED BY & DATE: BIXLER 01/10/17	ANGULAR: ± 2°	DRAFT WHERE APPLICABLE MUST REMAIN WITHIN DIMENSIONS	TITLE: 8 ROW HSD DAUGHTERCARD ASSEMBLY SALES DRAWING	REVISION ON CAD ONLY
REV: A	CAD FILENAME: SD-74680-073	MATERIAL NO.: 74680-0073	DRAWING NO.: SD-74680-073	MOLEX INCORPORATED	
SHEET NO. 1 OF 1			SIZE D		