

V1.0

CREALITY

Spider 高温高流量喷头说明书

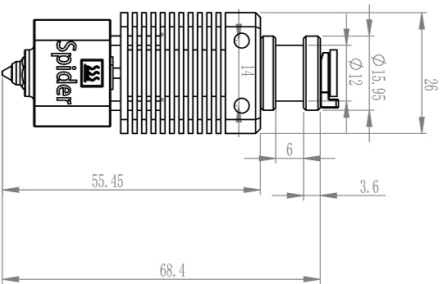
Spider High-temperature and High-speed Hotend Manual

深圳市创想三维科技股份有限公司  
Shenzhen Creality Technology Co., Ltd

## 产品清单 Product List

全套喷头 Hotend	1Pcs	热敏电阻 Thermistor	1Pcs	M3螺母 M3 Nut	2Pcs
0.6mm喷嘴 0.6mm nozzle	1Pcs	M3六角扳手 M3 hex key	1Pcs	转接头 Adapter	1Pcs
M2六角扳手 M2 hex key	1Pcs	M3*20螺丝 M3*20 screw	4Pcs		
开口扳手 Open end wrenchs	1Pcs	扎带 Cable Ties	5Pcs		

产品尺寸 Product Size



## 安装步骤 Installation Steps

1. 拆下原装喷头的风扇罩，并将内置的两个风扇取下来；

1. Remove the fan cover of the original hotend, and take off the two built-in fans;

2. 将风扇安装到与Spider 高温高流量喷头适配的风扇罩上，风扇罩打印模型下载地址：<https://vip.creativity.com/en/goods-detail/1195> Download，或者联系经销商；

2. Install the fan on the fan cover that is compatible with the Spider's high temperature and high flow hotend. The download address of the fan cover printing model is: <https://vip.creativity.com/en/goods-detail/1195>. [Download](#) , or contact the dealer;

3. 拆下原装喷头，并将加热管及热敏电阻取下——加热管需要安装到Spider 高温高流量喷头上；

3. Remove the original hotend, heating tube and thermistor - the heating tube needs to be installed on the Spider high temperature and high flow hotend;

4.安装加热管及热敏电阻到Spider高温高流量喷头上（需要用M3螺丝固定），热敏电阻为Spider 高温高流量喷头套件附带；

4. Install the heating tube and thermistor to the Spider high temperature and high flow hotend (it needs to be fixed with M3 screws), the thermistor is attached to the Spider high temperature and high flow hotend kit;

5.取下喷头套件顶部转接头，用螺丝固定Spider高温高流量喷头到3D打印机上（根据3D打印机具体结构方式，可用螺丝固定，也可用转接头固定）；

5. Remove the top adapter of the hotend kit, and fix the Spider high temperature and high flow hotend to the 3D printer with screws (according to the specific structure of the 3D printer, it can be fixed with screws or with adapters);

6.安装风扇罩（风扇罩卡到喷头上），并将转接头安装到风扇罩顶部；

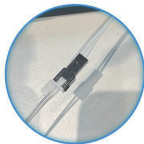
6. Install the fan cover (the fan cover is clipped to the hotend), and install the adapter to the top of the fan cover;

7.取下蓝色线夹，插入铁氟龙管，再次装上线夹固定；

7. Remove the blue wire clip, insert the Teflon tube, and install the wire clip again to fix it;

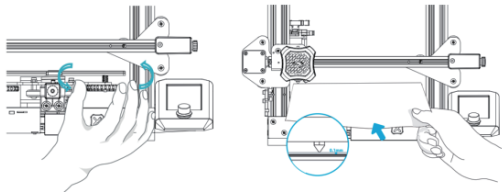
8.将热敏电阻线与主板端连接——如果热敏电阻线长不够，或者端子不匹配，可以利用原装的热敏电阻线或者端子改装，如Ender-5系列机型；

8. Connect the thermistor wire to the motherboard end - if the thermistor wire is not long enough or the terminals do not match, you can use the original thermistor wire or terminal to modify, such as Ender-5 series models;



9.调整喷嘴与打印平台之间的距离，使喷嘴尖头与平台距离0.1mm。可以通过调节Z轴限位开关位置与调平螺母实现，调平后开始打印；

9.Adjust the distance between the nozzle and the printing platform so that the distance between the nozzle tip and the platform is 0.1mm. It can be achieved by adjusting the position of the Z-axis limit switch and the leveling nut. After leveling, start printing;



详细安装步骤，请参考安装视频，视频链接地址：For detailed installation steps, please refer to the installation video, the video link address: <https://vip.creality.com/en/goods-detail/1195>. [Video](#)

## 其他说明 Other Instructions

1.由于Spider 高温高流量喷头整体产品长度大于原装喷头，为了达到更好的散热效果，需要安装与之匹配的风扇罩，该风扇罩可以安装BLTouch 或者CR Touch，风扇罩模型下载地址如下。

Since the overall product length of the Spider High-temperature and High-speed Hotend is longer than the original hotend, in order to achieve better heat dissipation, it is necessary to install a matching fan cover. The fan cover can be installed with BLTouch or CR Touch. The download address of the fan cover model is as follows: <https://vip.creality.com/en/goods-detail/1195>. [Download](#)

2.Spider 高温高流量喷头喉管及喷嘴为易损件，可以单独购买。更换喉管时，加热块与散热块上下面需平行，预防喉管弯曲断裂。具体更换步骤，请参考视频，视频链接地址。

Spider high-temperature and high-speed hotend throat and nozzle are consumable parts



and can be purchased separately. When replacing the throat, the upper and lower sides of the heating block and the cooling block should be parallel to prevent the throat from bending and breaking. For specific replacement steps, please refer to the video, the video link address: <https://vip.creality.com/en/goods-detail/1195>. [Video](#)



Creality Vip Mall 官网二维码  
Creality Vip Mall Official Website QR Code



深圳市创想三维科技股份有限公司  
SHENZHEN CREALITY 3D TECHNOLOGY CO., LTD.

深圳市龙华区民治街道新牛社区梅龙大道锦绣鸿都大厦18F  
18F, JinXiuHongDu Building, Meilong Blvd., Longhua Dist., Shenzhen, China 518131

公司网站 Official Website: [www.cxsw3d.com](http://www.cxsw3d.com) [www.creality.com](http://www.creality.com)  
服务热线 Tel: 400 6133 882 0755-8523 4565

MADE  
IN  
CHINA