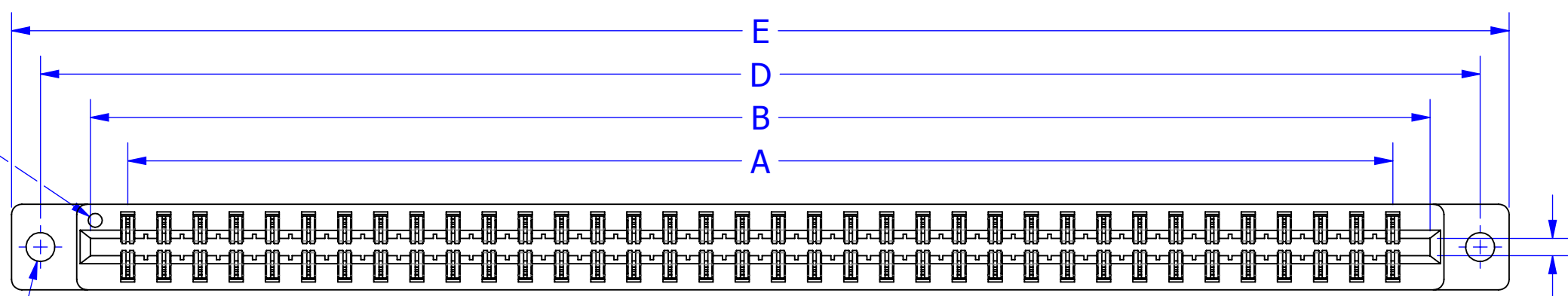
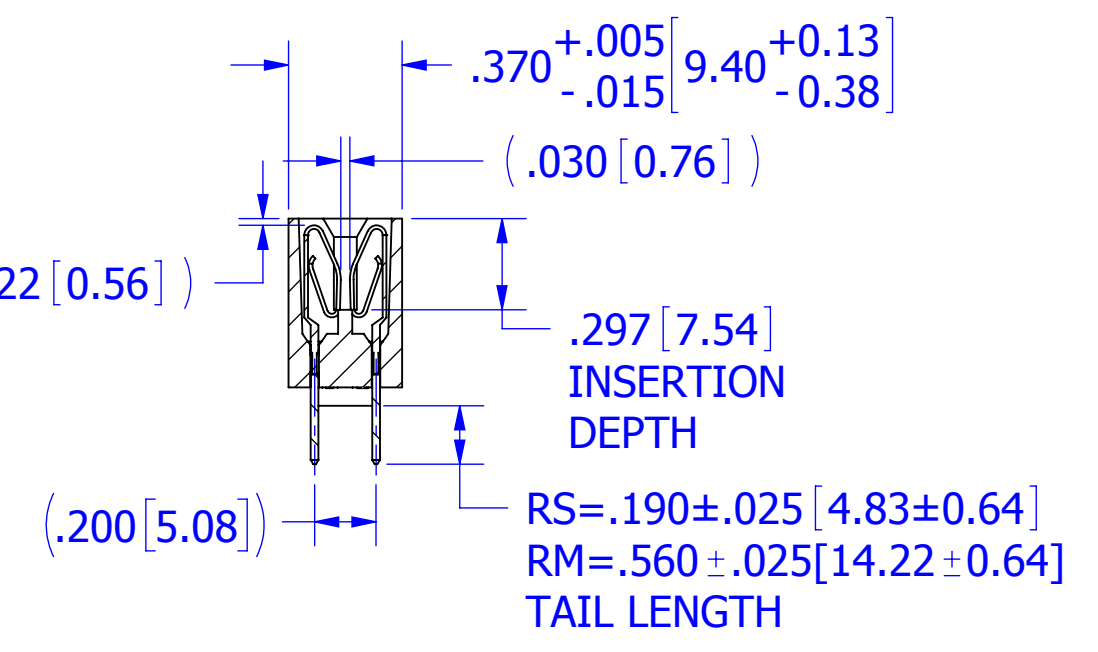
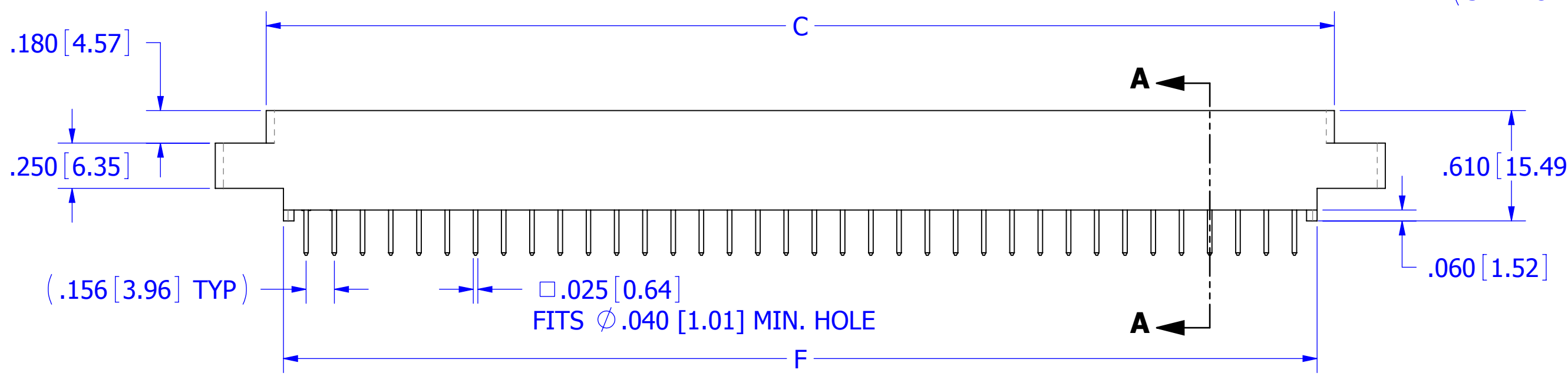


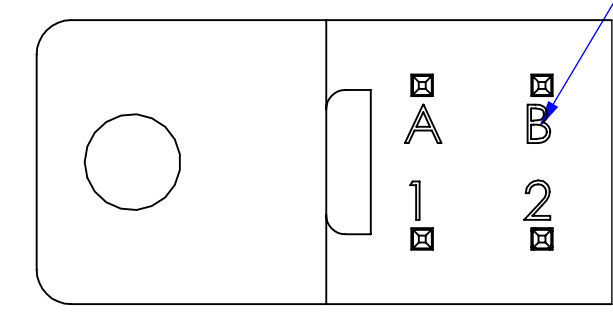
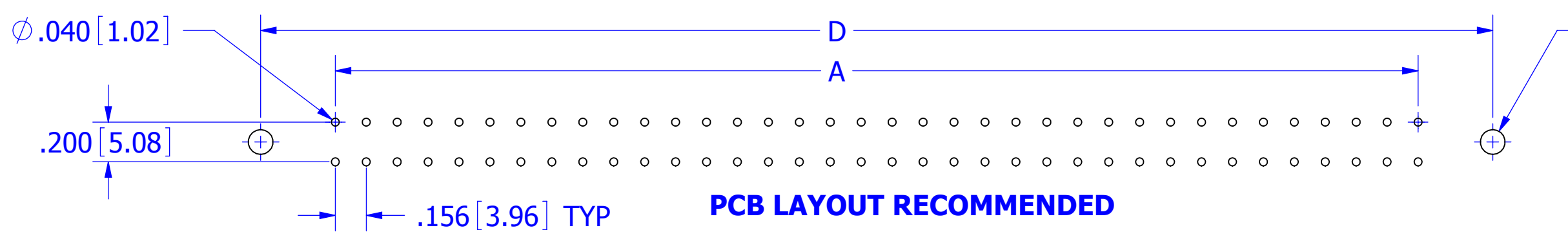
REVISIONS				
REV.	ECO. NO	DESCRIPTION	DATE	BY
D	3585	ADD 49 POSITION, UPDATE DWG FORMAT, ADD 'T' MATERIAL CODE, ADDED TABLE 1 TO PRODUCTION DRAWING	12/14/2016	EP
E	4061	ADD POS 05 TO DIM TABLE (#108952), ADD KEY OPTION (#161662)	6/5/2019	JH



(.075 [1.91] CARD SLOT SEE NOTE 13)



SECTION A-A
SCALE 2 : 1.25



CONTACT ID
SCALE 4:1

CONTACT MARKINGS (LETTERS G, I, O & Q NOT USED)

SIZES 05-25, 28, 30, & 31
 1 2 ... 23 24 ... 29 30
 A B ... A B ... H J

SIZES 36 - 43
 A B ... A B ... X Y
 1 2 ... 23 24 ... 42 43

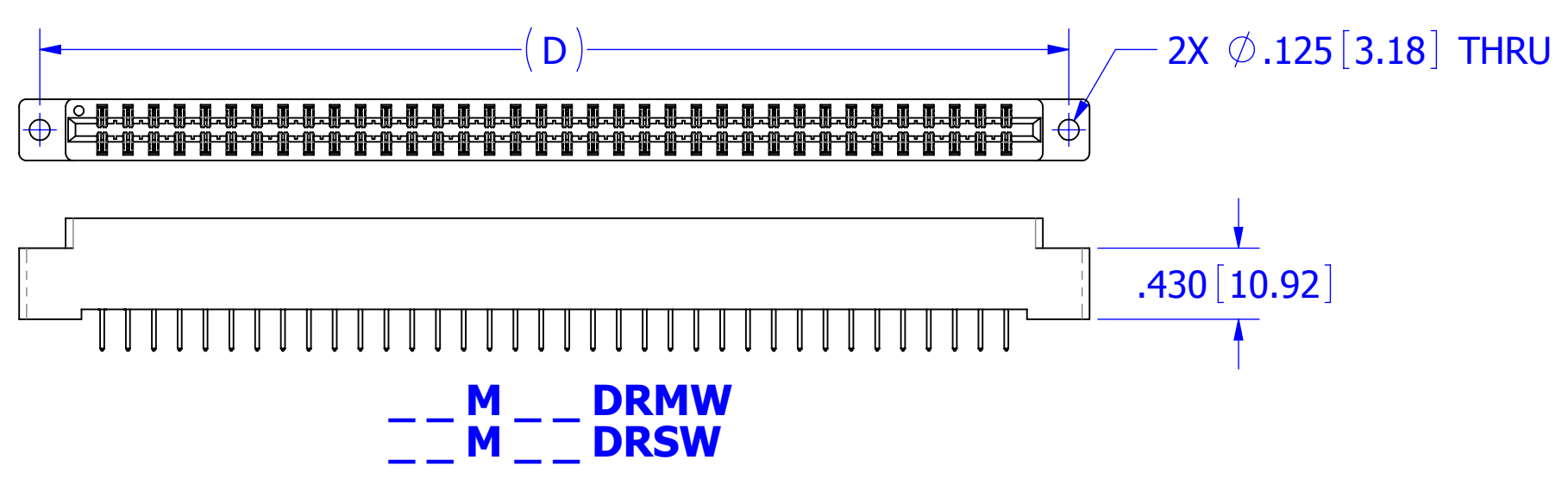
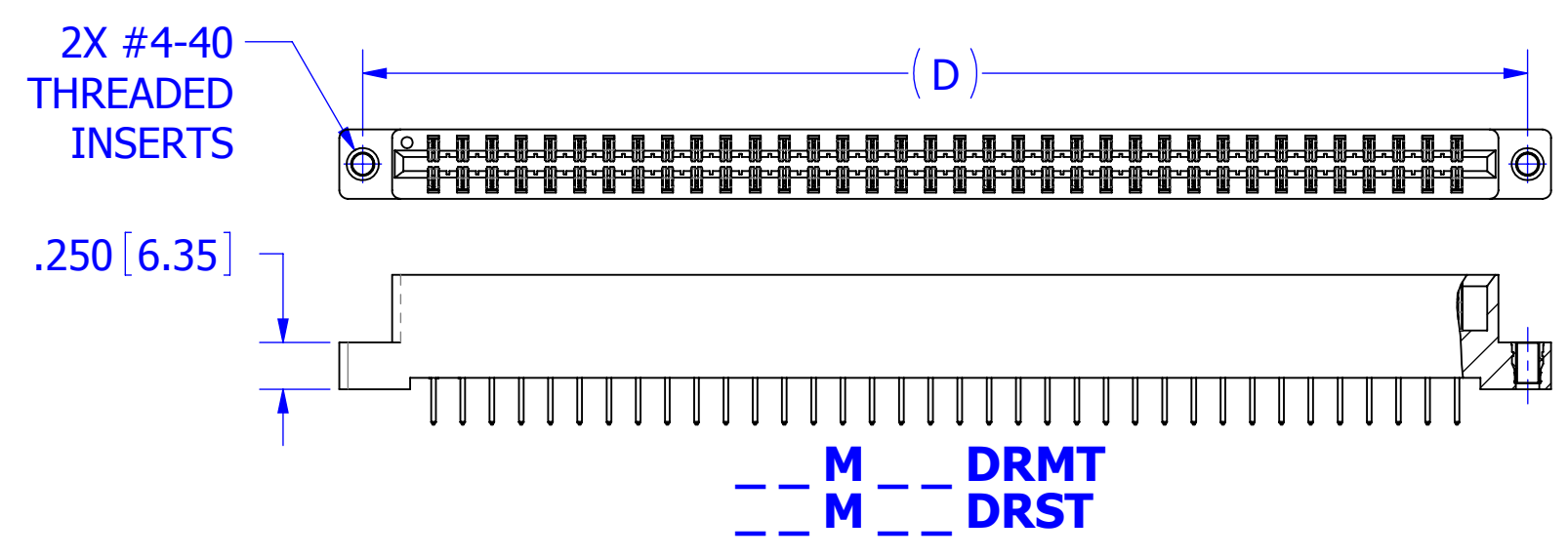
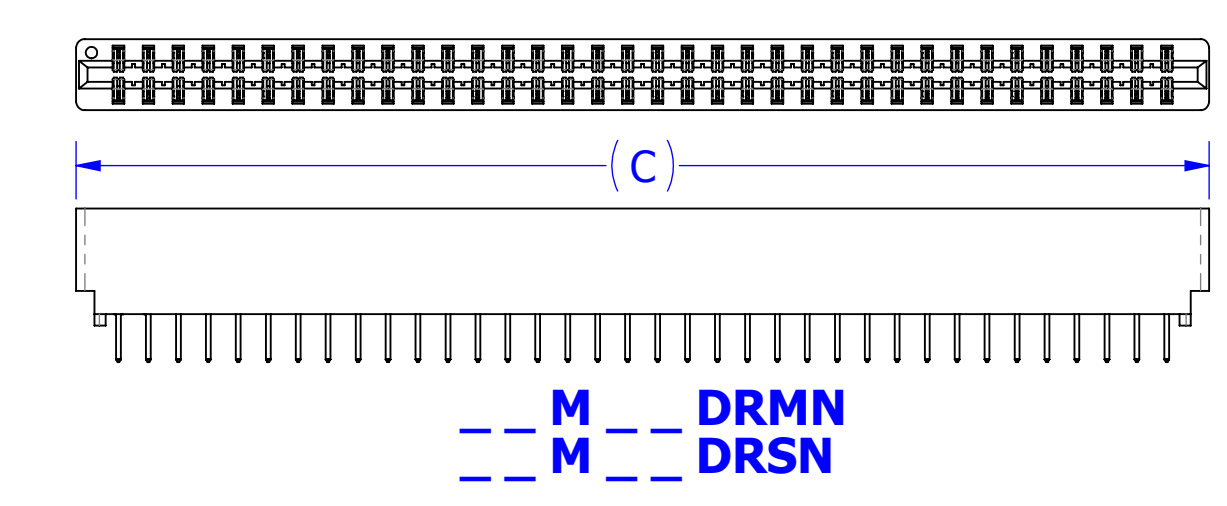
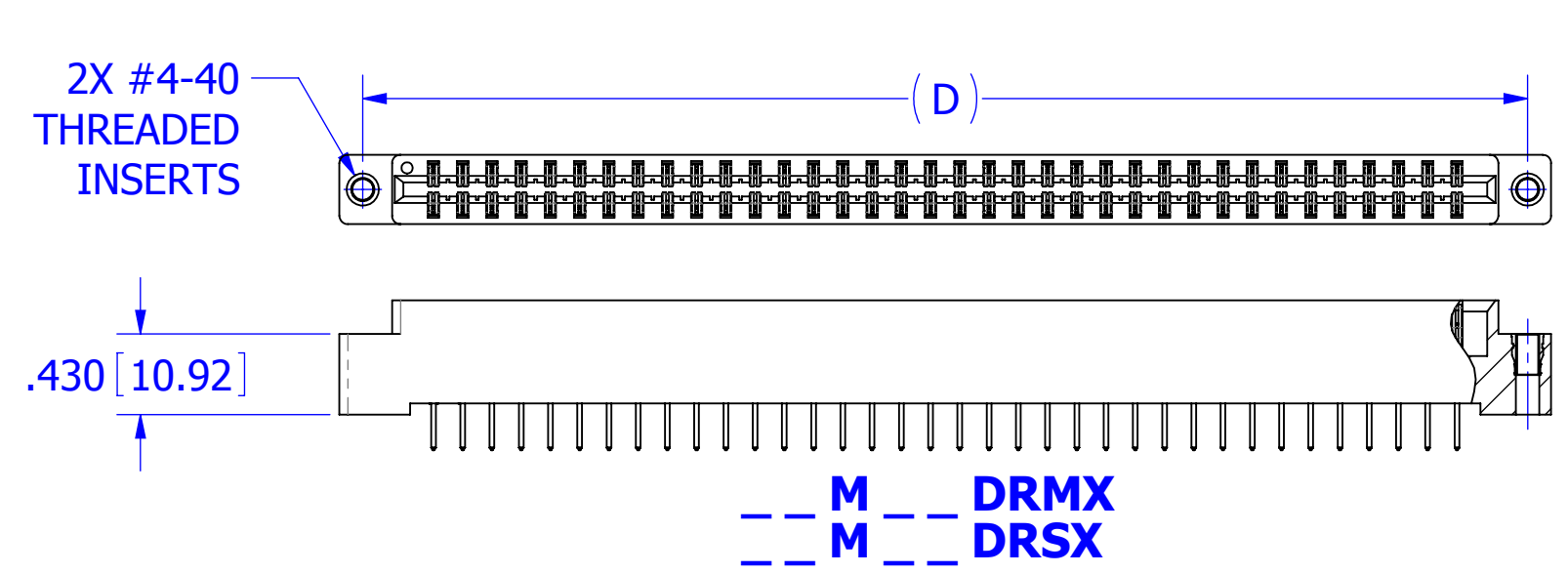
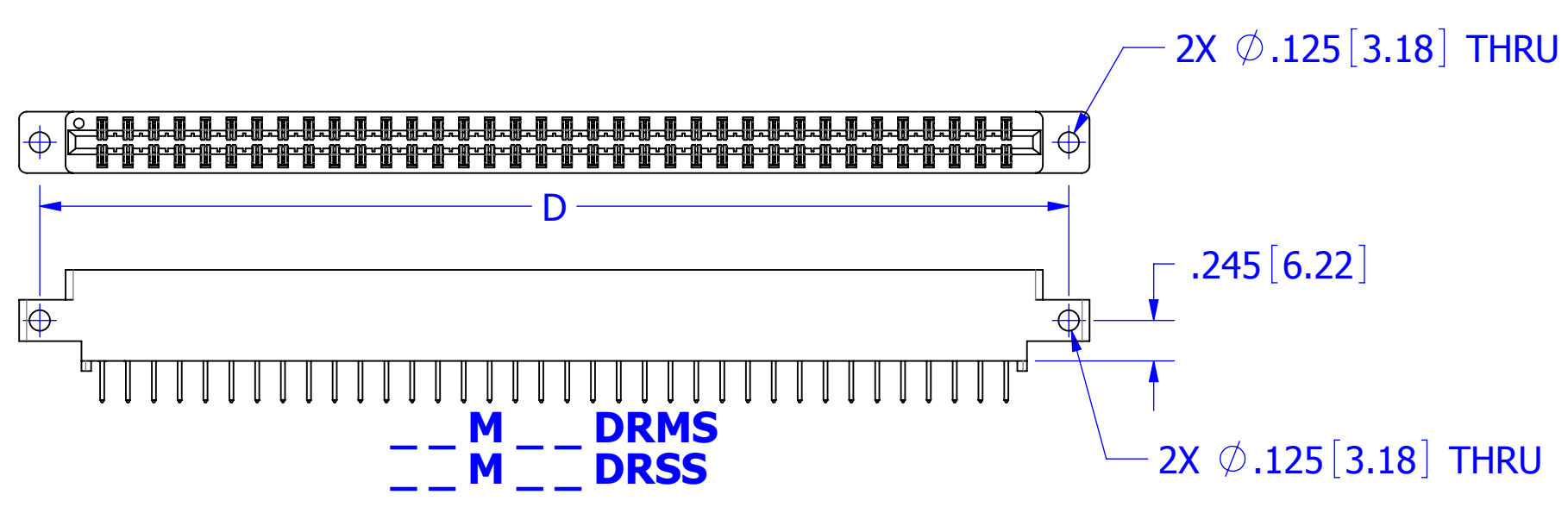
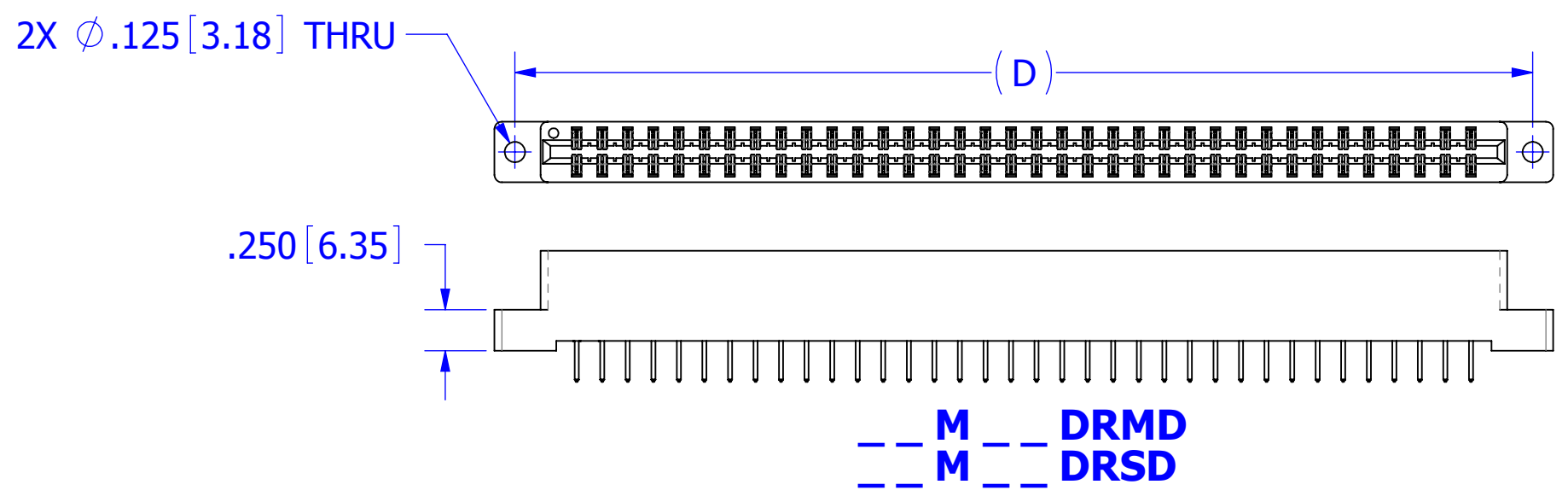
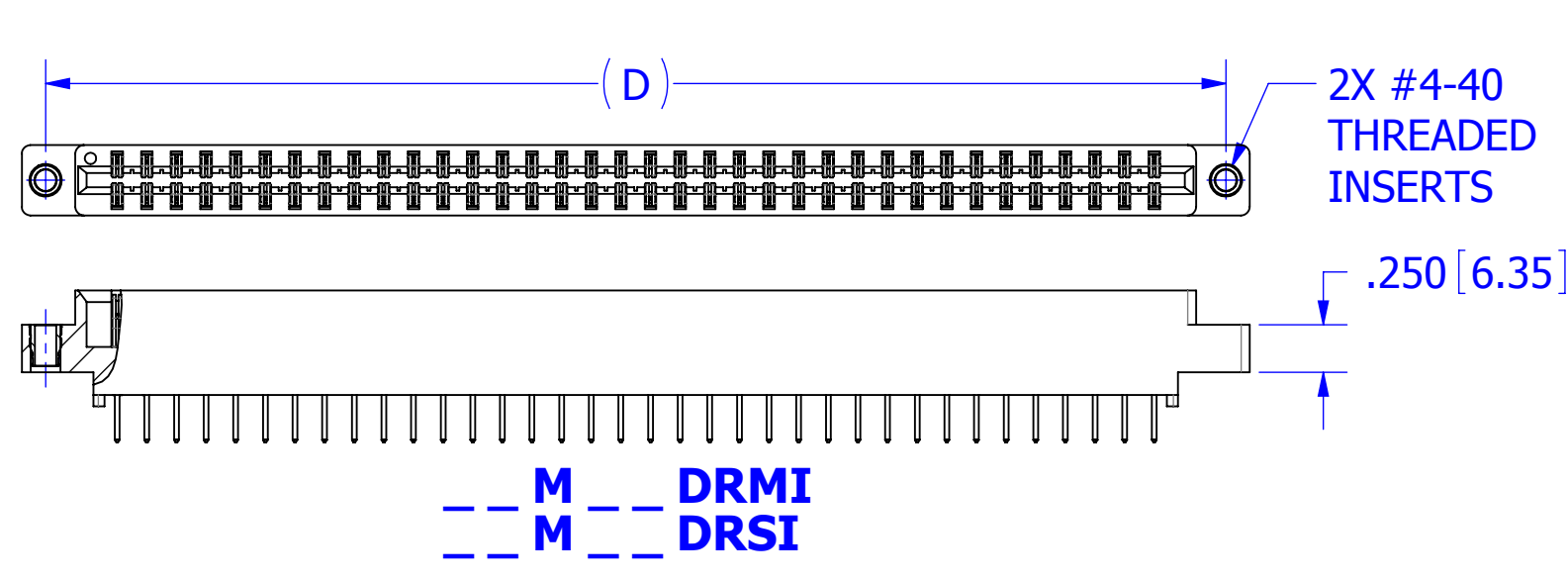
SIZES 47, 49 & 50
 1 3 ... 97 99
 2 4 ... 98 100

- NOTES:**
- INSULATOR MATERIAL: SEE PART NUMBER CODING
 - CONTACT MATERIAL: SEE PART NUMBER CODING
 - PLATING: SEE PART NUMBER CODING
 - OPERATING TEMPERATURE: SEE PART NUMBER CODING
 - PROCESSING TEMP: SEE PART NUMBER CODING
 - UL FLAMMABILITY RATING: 94V-0
 - OPERATING VOLTAGE: 950 VAC
 - CURRENT RATING: 3 AMP
 - CONTACT RESISTANCE: 30 MILLI OHMS MAX
 - INSULATION RESISTANCE: 5000 MEGA OHMS
 - DURABILITY: 500 CYCLES MINIMUM
 - CONNECTOR IDENTIFICATION: THE PART SHALL BE MARKED WITH A PART NUMBER AND LOT CODE
 - BOARD THICKNESS ACCOMMODATED: .062 ± .008 [1.57 ± 0.20]
 - INSERTION FORCE: 8 OZ MAX PER CONTACT PAIR WHEN USING A .062 [1.57] TEST BLADE
 - WITHDRAWAL FORCE: 1 OZ MIN PER CONTACT PAIR USING .062 [1.57] TEST BLADE
 - MODIFICATION: SEE PART NUMBER CODING



UNLESS OTHERWISE SPECIFIED: DIMENSIONS ARE IN INCHES [MM]		DRAWN	DATE	NAME	
			10/3/07	VJ	
TOLERANCES:		<small>THE INFORMATION HEREIN CONTAINS PROPRIETARY INFORMATION OF SULLINS ELECTRONICS AND IS NOT TO BE REPRODUCED, USED OR DISCLOSED TO OTHERS FOR ANY PURPOSE EXCEPT AS SPECIFICALLY AUTHORIZED IN WRITING BY AN OFFICER OF SULLINS ELECTRONICS.</small>			
ANGULAR: ± 1°		TITLE EDGECARD, .156 CC, HP			
DECIMALS .XX = ± .02 [.5] .XXX = ± .005 [.13] .XXXX = ± .0005 [.013]		PART NUMBER _ _ M _ _ D (RS, RM) _ (-S38, -S81, -S328)			
		SIZE	CAGE CODE	DWG. NO.	REV
		C	54453	C10976	E
		SCALE: 2:1		SHEET 1 OF 3	

CUSTOMER COPY

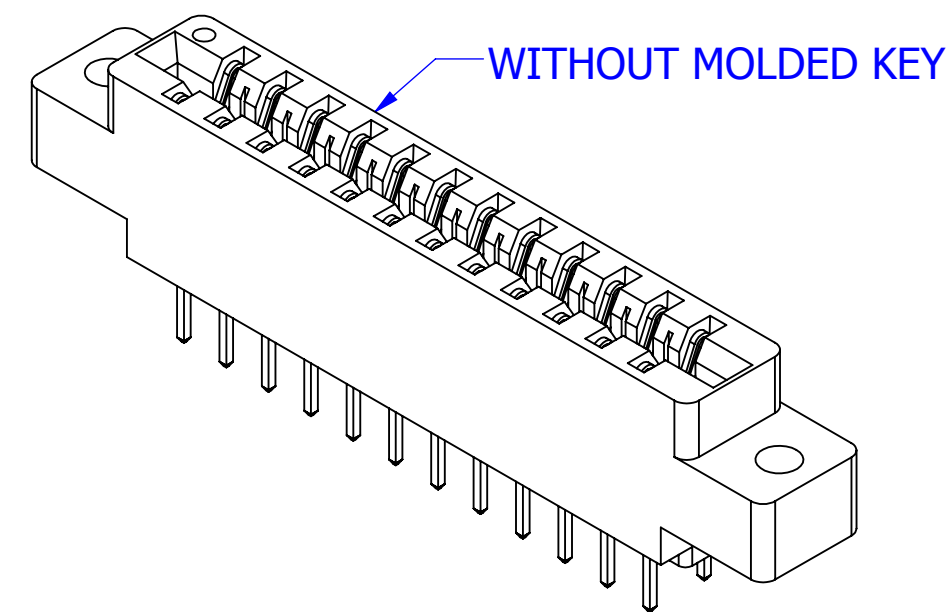


CUSTOMER COPY

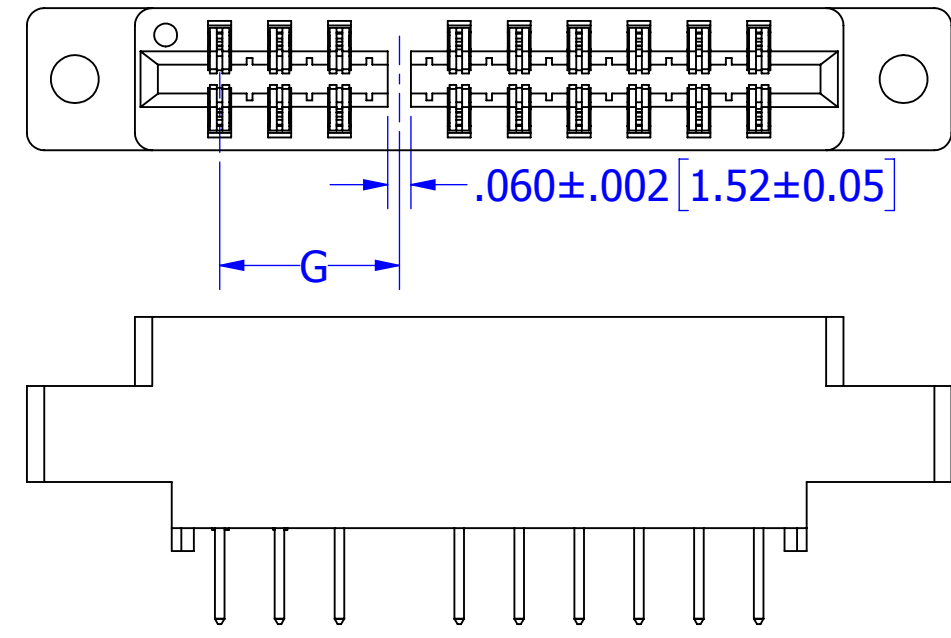


UNLESS OTHERWISE SPECIFIED: DIMENSIONS ARE IN INCHES [MM]		DRAWN	DATE	NAME	
TOLERANCES: ANGULAR: ± 1° DECIMALS .XX = ± .02 [.5] .XXX = ± .005 [.13] .XXXX = ± .0005 [.013]			10/3/07	VJ	
THE INFORMATION HEREIN CONTAINS PROPRIETARY INFORMATION OF SULLINS ELECTRONICS AND IS NOT TO BE REPRODUCED, USED OR DISCLOSED TO OTHERS FOR ANY PURPOSE EXCEPT AS SPECIFICALLY AUTHORIZED IN WRITING BY AN OFFICER OF SULLINS ELECTRONICS.					TITLE EDGECARD, .156 CC, HP
PART NUMBER _M_D(RS, RM)_ (-S38, -S81, -S328)					SIZE C 54453
SCALE: 1:1					DWG. NO. C10976
FILE NAME: C10976, _M_D(RS, RM)_-OMIT.S38.S81.S328, STD S_... KEY IN POSITION, KEY BETWEEN POSITIONS					REV E
SHEET 2 OF 3					

PART NUMBER	NO. OF POS.	INCHES						MILLIMETERS					
		A±.008	B±.008	C±.015	D±.010	E±.020	F±.015	A±0.20	B±0.20	C±0.38	D±0.25	E±0.51	F±0.38
M05D(RS, RM)	5	0.624	0.946	1.065	1.378	1.628	0.874	15.85	24.03	27.05	35.00	41.35	22.20
M06D(RS, RM)	6	0.780	1.102	1.221	1.534	1.784	1.030	19.81	27.99	31.01	38.96	45.31	26.16
M08D(RS, RM)	8	1.092	1.414	1.533	1.846	2.096	1.342	27.74	35.92	38.94	46.89	53.24	34.09
M10D(RS, RM)	10	1.404	1.726	1.845	2.158	2.408	1.654	35.66	43.84	46.86	54.81	61.16	42.01
M12D(RS, RM)	12	1.716	2.038	2.157	2.470	2.720	1.966	43.59	51.77	54.79	62.74	69.09	49.94
M15D(RS, RM)	15	2.184	2.506	2.625	2.938	3.188	2.434	55.47	63.65	66.68	74.63	80.98	61.82
M18D(RS, RM)	18	2.652	2.974	3.093	3.406	3.656	2.902	67.36	75.54	78.56	86.51	92.86	73.71
M20D(RS, RM)	20	2.964	3.286	3.405	3.718	3.968	3.214	75.29	83.46	86.49	94.44	100.79	81.64
M22D(RS, RM)	22	3.276	3.598	3.717	4.030	4.280	3.526	83.21	91.39	94.41	102.36	108.71	89.56
M24D(RS, RM)	24	3.588	3.910	4.029	4.342	4.592	3.838	91.14	99.31	102.34	110.29	116.64	97.49
M25D(RS, RM)	25	3.744	4.066	4.185	4.498	4.748	3.994	95.10	103.28	106.30	114.25	120.60	101.45
M28D(RS, RM)	28	4.212	4.534	4.653	4.966	5.216	4.462	106.98	115.16	118.19	126.14	132.49	113.33
M30D(RS, RM)	30	4.524	4.846	4.965	5.278	5.528	4.774	114.91	123.09	126.11	134.06	140.41	121.26
M31D(RS, RM)	31	4.680	5.002	5.121	5.434	5.684	4.930	118.87	127.05	130.07	138.02	144.37	125.22
M36D(RS, RM)	36	5.460	5.782	5.901	6.214	6.464	5.710	138.68	146.86	149.89	157.84	164.19	145.03
M40D(RS, RM)	40	6.084	6.406	6.525	6.838	7.088	6.334	154.53	162.71	165.74	173.69	180.04	160.88
M43D(RS, RM)	43	6.552	6.874	6.993	7.306	7.556	6.802	166.42	174.60	177.62	185.57	191.92	172.77
M47D(RS, RM)	47	7.176	7.498	7.617	7.930	8.180	7.426	182.27	190.45	193.47	201.42	207.77	188.62
M49D(RS, RM)	49	7.488	7.810	7.929	8.242	8.492	7.738	190.20	198.37	201.40	209.35	215.70	196.55
M50D(RS, RM)	50	7.644	7.966	8.085	8.398	8.648	7.894	194.16	202.34	205.36	213.31	219.66	200.51

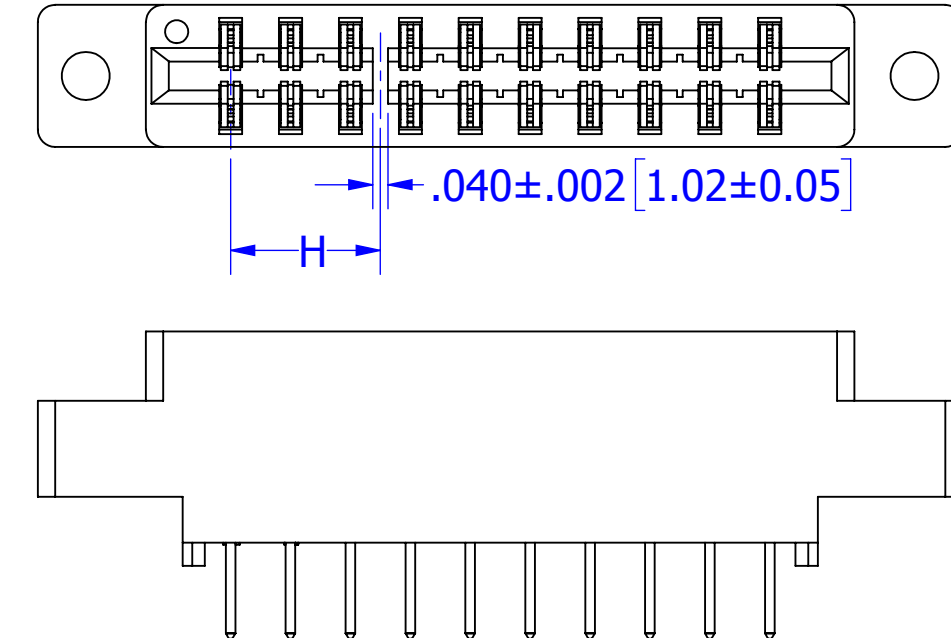


KEY IN POSITION



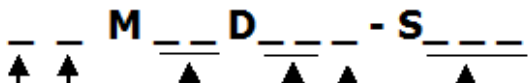
('H' MOUNTING AS SHOWN FOR EXAMPLE)

KEY BETWEEN POSITIONS



('H' MOUNTING AS SHOWN FOR EXAMPLE)

PART NUMBER CODING



MATERIALS (INSULATOR / CONTACT)

E = BLUE PBT/PHOSPHOR BRONZE
OPERATING TEMP: -65°C TO +125°C
PROCESSING TEMP: WAVE/MANUAL SOLDERING

R = GREEN PPS/PHOSPHOR BRONZE
OPERATING TEMP: -65°C TO +125°C
PROCESSING TEMP: 260°C MAX FOR 20 SECS

G = BLACK PA9T/PHOSPHOR BRONZE
OPERATING TEMP: -65°C TO +125°C
PROCESSING TEMP: 260°C MAX FOR 20 SECS

A = GREEN PPS/BERYLLIUM COPPER
OPERATING TEMP: -65°C TO +150°C
PROCESSING TEMP: 260°C MAX FOR 20 SECS

J = BLACK PA9T/BERYLLIUM COPPER
OPERATING TEMP: -65°C TO +150°C
PROCESSING TEMP: 260°C MAX FOR 20 SECS

T = GREEN PPS/BERYLLIUM COPPER
OPERATING TEMP: -65°C TO +175°C
PROCESSING TEMP: 260°C MAX FOR 20 SECS

MODIFICATION CODE

OMIT FOR STANDARD, EX: EBM22DRSN
S38 = BLACK PBT (MATERIAL CODE E ONLY)
S81 = GREEN PBT (MATERIAL CODE E ONLY)
S328 = BROWN PPS (MATERIAL CODE R AND A ONLY)
OTHER S# FOR MOLDED KEY OPTION (SEE DRAWING C13556 FOR S#, G & H DIMENSIONS)

MOUNTING STYLE

H = .125" DIAMETER CLEARANCE HOLES
I = #4-40 THREADED INSERT
S = .125" DIAMETER SIDE MOUNTING
N = NO MOUNTING EARS
W = .430" EARS, FLUSH MOUNTING, .125" DIAMETER
D = .250" EARS, FLUSH MOUNTING, .125" DIAMETER
X = .430" EARS, FLUSH MOUNTING WITH # 4-40 THREADED INSERT
T = .250" EARS, FLUSH MOUNTING WITH # 4-40 THREADED INSERT

TERMINATION TYPE

RS = .190" TAIL LENGTH
RM = .560" TAIL LENGTH
(SEE SECTION A-A ON SHT1)

NUMBER OF POSITIONS (CONTACTS PER ROW)

PLATING
ALL PLATINGS ARE LEAD FREE AND HAVE .000050" NICKEL UNDERPLATE

CONTACT SURFACE	TERMINATION
B = .000010" GOLD	.000100" PURE TIN, MATTE
C = .000030" GOLD	.000100" PURE TIN, MATTE
G = .000010" GOLD	.000005" GOLD
Y = .000030" GOLD	.000005" GOLD
S = .000010" GOLD	.000010" GOLD OVERALL
M = .000030" GOLD	.000010" GOLD OVERALL
E = .000100" PURE TIN, MATTE	.000100" PURE TIN, MATTE, OVERALL

OVERALL PURE TIN ONLY AVAILABLE ON MATERIAL CODES E, R AND G



CUSTOMER COPY

UNLESS OTHERWISE SPECIFIED: DIMENSIONS ARE IN INCHES (MM)	DRAWN	DATE	NAME	
		10/3/07	VJ	
TOLERANCES: ANGULAR: ± 1° DECIMALS .XX = ± .02 [.5] .XXX = ± .005 [.13] .XXXX = ± .0005 [.013]	THE INFORMATION HEREIN CONTAINS PROPRIETARY INFORMATION OF SULLINS ELECTRONICS AND IS NOT TO BE REPRODUCED, USED OR DISCLOSED TO OTHERS FOR ANY PURPOSE EXCEPT AS SPECIFICALLY AUTHORIZED IN WRITING BY AN OFFICER OF SULLINS ELECTRONICS.			TITLE
				EDGE CARD, .156 CC, HP
PART NUMBER				REV
_M_D(RS, RM)_ (-S38, -S81, -S328)				E
SIZE	CAGE CODE	DWG. NO.		
C	54453	C10976		
SCALE: 2:1			SHEET 3 OF 3	