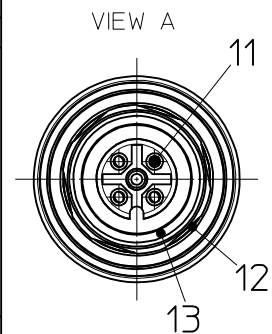
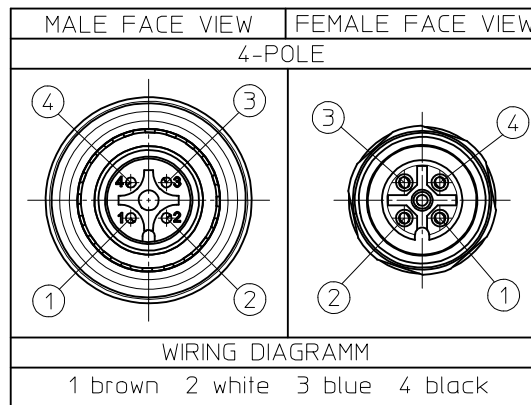


CABLE PRINTING: Molex "Material-No" "Eng.-No." "PROD. DATE"

PART NUMBER	ENGINEERING Nr.	DESCRIPTION	LENGTH L
1200805098	8W4030F03M0068	CSE U12 M12 4P AC MA STR PVC FE STR 0.6M DE UNSH BK V4A	0.6M
1200805099	8W4030F03M0108	CSE U12 M12 4P AC MA STR PVC FE STR 1M DE UNSH BK V4A	1M
1200805100	8W4030F03M0208	CSE U12 M12 4P AC MA STR PVC FE STR 2M DE UNSH BK V4A	2M
1200805101	8W4030F03M0308	CSE U12 M12 4P AC MA STR PVC FE STR 3M DE UNSH BK V4A	3M
1200805102	8W4030F03M0508	CSE U12 M12 4P AC MA STR PVC FE STR 5M DE UNSH BK V4A	5M
1200805103	8W4030F03M1008	CSE U12 M12 4P AC MA STR PVC FE STR 10M DE UNSH BK V4A	10M

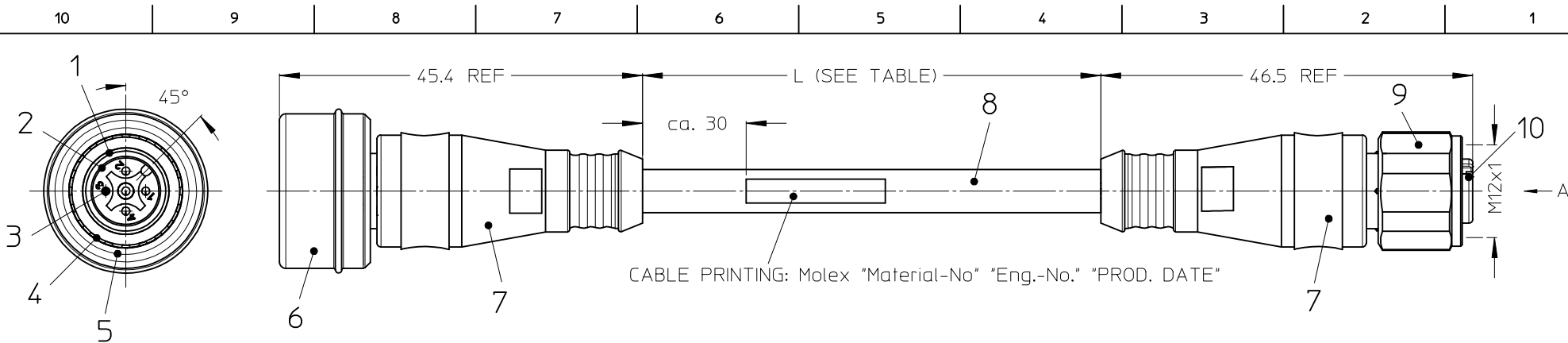


13	O-RING	EPDM	---
12	SPRING	STAINLESS STEEL	---
11	CRIMP CONTACT	COPPER ALLOY	Au over Ni
10	INSERT	PA6	---
9	COUPLING NUT	STAINLESS STEEL	---
8	CABLE	COPPER STANDING JACKET: PVC	---
7	OVERMOLD	PVC	---
6	PUSH SLEEVE	STAINLESS STEEL	---
5	SPRING SLEEVE	STAINLESS STEEL	---
4	SPRING	STAINLESS STEEL	---
3	PIN CONTACT	COPPER ALLOY	Au over Ni
2	INSERT	PA6	---
1	O-RING	EPDM	---
ITEM	COMPONENT	MATERIAL	FINISH

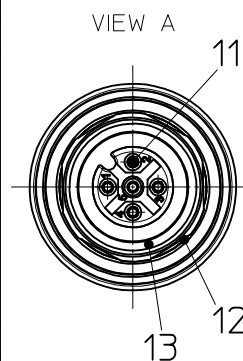
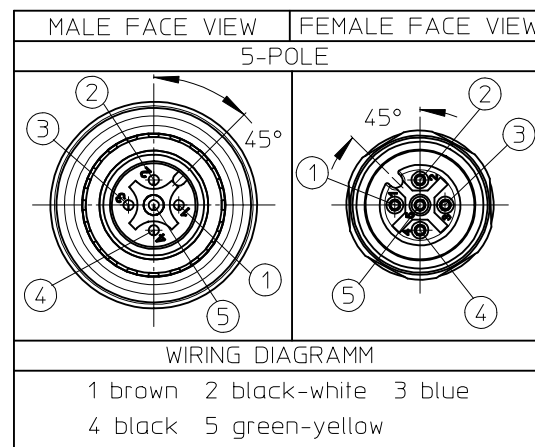
CONNECTOR SPECIFICATION

VOLTAGE RATING	250V VAC/DAC
AMPERAGE RATING	max. 4A
PROTECTION	IP 69K
OPERATING TEMPERATURE	-25 °C TO +105°C

<b>ENTER DESCRIPTION</b> EC NO: IPG2015-0803 DRW:RSCHIEBER 2014/11/18 CHKD:PSILLER 2014/11/18 APPR:CBURGER 2014/11/28	<b>QUALITY SYMBOLS</b> ▽=0 ◻=0	<b>GENERAL TOLERANCES (UNLESS SPECIFIED)</b>		<b>DIMENSION STYLE</b> MM ONLY		<b>SCALE</b> 2:1	<b>DESIGN UNITS</b> METRIC	THIRD ANGLE PROJECTION	
		4 PLACES ± --- ± --- 3 PLACES ± --- ± --- 2 PLACES ± 0.05 ± --- 1 PLACE ± 0.30 ± --- 0 PLACE ± 0.50 ± ---	mm INCH DRAWN BY ZISMAYILOV DATE 2012/09/14 CHECKED BY RSCHIEBER DATE 2012/10/31 APPROVED BY CBURGER DATE 2012/11/02	<b>TITLE</b> CSE U12 M12 XP AC MA STR PVC FE STR XM DE UNSH BK V4A					
		ANGULAR ± .5 °		<b>MATERIAL NO.</b> SEE TABLE		<b>DOCUMENT NO.</b> SD-120080-070		<b>SHEET NO.</b> 1 OF 2	
		DRAFT WHERE APPLICABLE MUST REMAIN WITHIN DIMENSIONS		<b>THIS DRAWING CONTAINS INFORMATION THAT IS PROPRIETARY TO MOLEX INCORPORATED AND SHOULD NOT BE USED WITHOUT WRITTEN PERMISSION</b>					



PART NUMBER	ENGINEERING Nr.	DESCRIPTION	LENGTH L
1200808078	8W5030F03M0068	CSE U12 M12 5P AC MA STR PVC FE STR 0.6M DE UNSH BK V4A	0.6M
1200808079	8W5030F03M0108	CSE U12 M12 5P AC MA STR PVC FE STR 1M DE UNSH BK V4A	1M
1200808080	8W5030F03M0208	CSE U12 M12 5P AC MA STR PVC FE STR 2M DE UNSH BK V4A	2M
1200808081	8W5030F03M0308	CSE U12 M12 5P AC MA STR PVC FE STR 3M DE UNSH BK V4A	3M
1200808082	8W5030F03M0508	CSE U12 M12 5P AC MA STR PVC FE STR 5M DE UNSH BK V4A	5M
1200808083	8W5030F03M1008	CSE U12 M12 5P AC MA STR PVC FE STR 10M DE UNSH BK V4A	10M

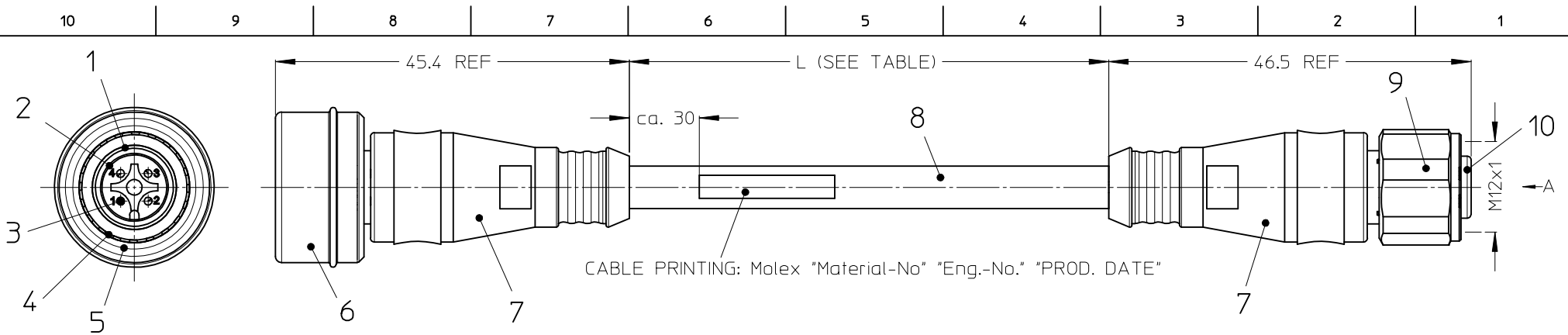


13	O-RING	EPDM	---
12	SPRING	STAINLESS STEEL	---
11	CRIMP CONTACT	COPPER ALLOY	Au over Ni
10	INSERT	PA6	---
9	COUPLING NUT	STAINLESS STEEL	---
8	CABLE	COPPER STANDING JACKET: PVC	---
7	OVERMOLD	PVC	---
6	PUSH SLEEVE	STAINLESS STEEL	---
5	SPRING SLEEVE	STAINLESS STEEL	---
4	SPRING	STAINLESS STEEL	---
3	PIN CONTACT	COPPER ALLOY	Au over Ni
2	INSERT	PA6	---
1	O-RING	EPDM	---
ITEM	COMPONENT	MATERIAL	FINISH

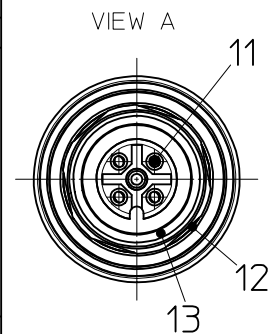
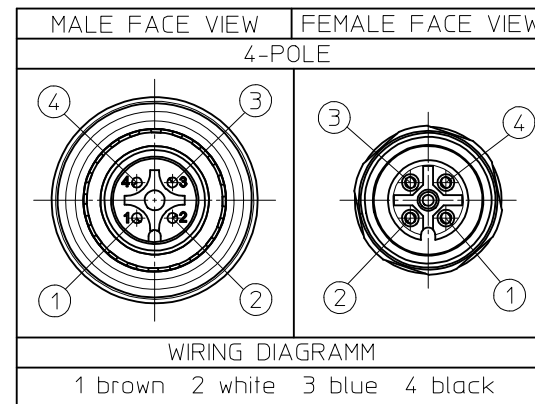
#### CONNECTOR SPECIFICATION

VOLTAGE RATING	250V VAC/DAC
AMPERAGE RATING	max. 4A
PROTECTION	IP 69K
OPERATING TEMPERATURE	-25 °C TO +105°C

<b>ENTER DESCRIPTION</b> EC NO: IPG2015-0803 DRW:RSCHIEBER 2014/11/18 CHK:RSCHIEBER 2014/11/18 APPR:CBURGER 2014/11/28	<b>QUALITY SYMBOLS</b> ▽=0 ◻=0	<b>GENERAL TOLERANCES (UNLESS SPECIFIED)</b>		<b>DIMENSION STYLE</b> <b>MM ONLY</b>		<b>SCALE</b> <b>2:1</b>	<b>DESIGN UNITS</b> <b>METRIC</b>	<b>THIRD ANGLE PROJECTION</b>	
		4 PLACES ± --- ± --- 3 PLACES ± --- ± --- 2 PLACES ± 0.05 ± --- 1 PLACE ± 0.30 ± --- 0 PLACE ± 0.50 ± ---	mm INCH DRAWN BY DATE ZISMAYILOV 2012/09/14 CHECKED BY DATE RSCHIEBER 2012/10/31 APPROVED BY DATE CBURGER 2012/11/02	<b>TITLE</b> CSE U12 M12 XP AC MA STR PVC FE STR XM DE UNSH BK V4A					
		<b>ANGULAR ± .5 °</b>		<b>MATERIAL NO.</b>		<b>DOCUMENT NO.</b>		<b>SHEET NO.</b>	
		<b>DRAFT WHERE APPLICABLE MUST REMAIN WITHIN DIMENSIONS</b>		<b>SEE TABLE</b>		<b>SD-120080-070</b>		<b>2 OF 2</b>	
<b>THIS DRAWING CONTAINS INFORMATION THAT IS PROPRIETARY TO MOLEX INCORPORATED AND SHOULD NOT BE USED WITHOUT WRITTEN PERMISSION</b>									



PART NUMBER	ENGINEERING Nr.	DESCRIPTION	LENGTH L
1200805098	8W4030F03M0068	CSE U12 M12 4P AC MA STR PVC FE STR 0.6M DE UNSH BK V4A	0.6M
1200805099	8W4030F03M0108	CSE U12 M12 4P AC MA STR PVC FE STR 1M DE UNSH BK V4A	1M
1200805100	8W4030F03M0208	CSE U12 M12 4P AC MA STR PVC FE STR 2M DE UNSH BK V4A	2M
1200805101	8W4030F03M0308	CSE U12 M12 4P AC MA STR PVC FE STR 3M DE UNSH BK V4A	3M
1200805102	8W4030F03M0508	CSE U12 M12 4P AC MA STR PVC FE STR 5M DE UNSH BK V4A	5M
1200805103	8W4030F03M1008	CSE U12 M12 4P AC MA STR PVC FE STR 10M DE UNSH BK V4A	10M

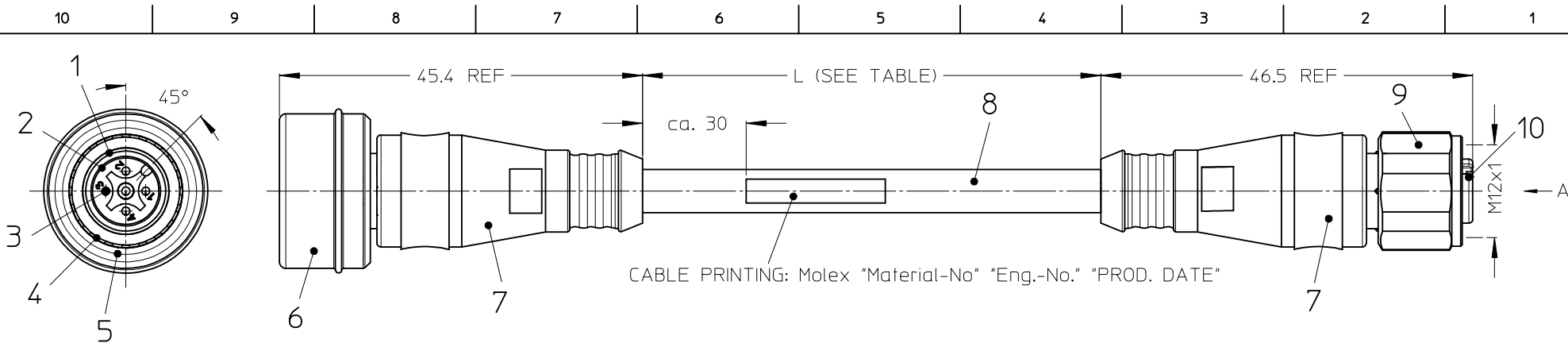


13	O-RING	EPDM	---
12	SPRING	STAINLESS STEEL	---
11	CRIMP CONTACT	COPPER ALLOY	Au over Ni
10	INSERT	PA6	---
9	COUPLING NUT	STAINLESS STEEL	---
8	CABLE	COPPER STANDING JACKET: PVC	---
7	OVERMOLD	PVC	---
6	PUSH SLEEVE	STAINLESS STEEL	---
5	SPRING SLEEVE	STAINLESS STEEL	---
4	SPRING	STAINLESS STEEL	---
3	PIN CONTACT	COPPER ALLOY	Au over Ni
2	INSERT	PA6	---
1	O-RING	EPDM	---
ITEM	COMPONENT	MATERIAL	FINISH

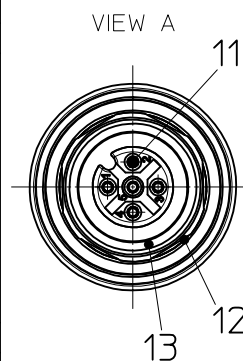
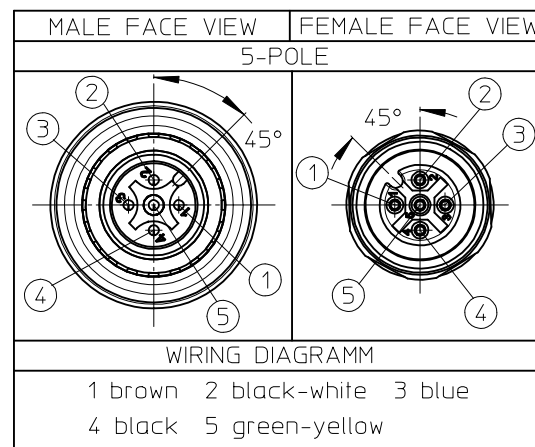
### CONNECTOR SPECIFICATION

VOLTAGE RATING	250V VAC/DAC
AMPERAGE RATING	max. 4A
PROTECTION	IP 69K
OPERATING TEMPERATURE	-25 °C TO +105°C

<b>ENTER DESCRIPTION</b> EC NO: IPG2015-0803 DRW:RSCHIEBER 2014/11/18 CHKD:PSILLER 2014/11/18 APPR:CBURGER 2014/11/28	<b>QUALITY SYMBOLS</b> ▽=0 ◻=0	<b>GENERAL TOLERANCES (UNLESS SPECIFIED)</b>	<b>DIMENSION STYLE</b> MM ONLY	<b>SCALE</b> 2:1	<b>DESIGN UNITS</b> METRIC	<b>THIRD ANGLE PROJECTION</b>	
		4 PLACES ± --- ± --- 3 PLACES ± --- ± --- 2 PLACES ± 0.05 ± --- 1 PLACE ± 0.30 ± --- 0 PLACE ± 0.50 ± ---	DRAWN BY: ZISMAYILOV DATE: 2012/09/14 CHECKED BY: RSCHIEBER DATE: 2012/10/31 APPROVED BY: CBURGER DATE: 2012/11/02	<b>TITLE</b> CSE U12 M12 XP AC MA STR PVC FE STR XM DE UNSH BK V4A			
		ANGULAR ± .5 °	<b>MATERIAL NO.</b> SEE TABLE	<b>DOCUMENT NO.</b> SD-120080-070			
		<b>DRAFT WHERE APPLICABLE MUST REMAIN WITHIN DIMENSIONS</b>	<b>SIZE</b> A3	THIS DRAWING CONTAINS INFORMATION THAT IS PROPRIETARY TO MOLEX INCORPORATED AND SHOULD NOT BE USED WITHOUT WRITTEN PERMISSION			



PART NUMBER	ENGINEERING Nr.	DESCRIPTION	LENGTH L
1200808078	8W5030F03M0068	CSE U12 M12 5P AC MA STR PVC FE STR 0.6M DE UNSH BK V4A	0.6M
1200808079	8W5030F03M0108	CSE U12 M12 5P AC MA STR PVC FE STR 1M DE UNSH BK V4A	1M
1200808080	8W5030F03M0208	CSE U12 M12 5P AC MA STR PVC FE STR 2M DE UNSH BK V4A	2M
1200808081	8W5030F03M0308	CSE U12 M12 5P AC MA STR PVC FE STR 3M DE UNSH BK V4A	3M
1200808082	8W5030F03M0508	CSE U12 M12 5P AC MA STR PVC FE STR 5M DE UNSH BK V4A	5M
1200808083	8W5030F03M1008	CSE U12 M12 5P AC MA STR PVC FE STR 10M DE UNSH BK V4A	10M



13	O-RING	EPDM	---
12	SPRING	STAINLESS STEEL	---
11	CRIMP CONTACT	COPPER ALLOY	Au over Ni
10	INSERT	PA6	---
9	COUPLING NUT	STAINLESS STEEL	---
8	CABLE	COPPER STANDING JACKET: PVC	---
7	OVERMOLD	PVC	---
6	PUSH SLEEVE	STAINLESS STEEL	---
5	SPRING SLEEVE	STAINLESS STEEL	---
4	SPRING	STAINLESS STEEL	---
3	PIN CONTACT	COPPER ALLOY	Au over Ni
2	INSERT	PA6	---
1	O-RING	EPDM	---
ITEM	COMPONENT	MATERIAL	FINISH

#### CONNECTOR SPECIFICATION

VOLTAGE RATING	250V VAC/DAC
AMPERAGE RATING	max. 4A
PROTECTION	IP 69K
OPERATING TEMPERATURE	-25 °C TO +105°C

<b>ENTER DESCRIPTION</b> EC NO: IPG2015-0803 DRW:RSCHIEBER 2014/11/18 CHK:RSCHIEBER 2014/11/18 APPR:CBURGER 2014/11/28	<b>QUALITY SYMBOLS</b> ▽=0 ◻=0	<b>GENERAL TOLERANCES (UNLESS SPECIFIED)</b>		<b>DIMENSION STYLE</b> <b>MM ONLY</b>		<b>SCALE</b> <b>2:1</b>	<b>DESIGN UNITS</b> <b>METRIC</b>	<b>THIRD ANGLE PROJECTION</b>		
		4 PLACES ± --- ± --- 3 PLACES ± --- ± --- 2 PLACES ± 0.05 ± --- 1 PLACE ± 0.30 ± --- 0 PLACE ± 0.50 ± ---	mm INCH DRAWN BY: ZISMAYILOV DATE: 2012/09/14 CHECKED BY: RSCHIEBER DATE: 2012/10/31 APPROVED BY: CBURGER DATE: 2012/11/02	<b>TITLE</b> CSE U12 M12 XP AC MA STR PVC FE STR XM DE UNSH BK V4A				<b>DOCUMENT NO.</b> SD-120080-070		<b>SHEET NO.</b> 2 OF 2
		<b>ANGULAR ± .5 °</b>		<b>SEE TABLE</b>		<b>MATERIAL NO.</b>		<b>THIS DRAWING CONTAINS INFORMATION THAT IS PROPRIETARY TO MOLEX INCORPORATED AND SHOULD NOT BE USED WITHOUT WRITTEN PERMISSION</b>		<b>DRAFT WHERE APPLICABLE MUST REMAIN WITHIN DIMENSIONS</b>
		<b>SIZE</b> <b>A3</b>		<b>THIS DRAWING CONTAINS INFORMATION THAT IS PROPRIETARY TO MOLEX INCORPORATED AND SHOULD NOT BE USED WITHOUT WRITTEN PERMISSION</b>		<b>SIZE</b> <b>A3</b>		<b>THIS DRAWING CONTAINS INFORMATION THAT IS PROPRIETARY TO MOLEX INCORPORATED AND SHOULD NOT BE USED WITHOUT WRITTEN PERMISSION</b>		<b>SIZE</b> <b>A3</b>