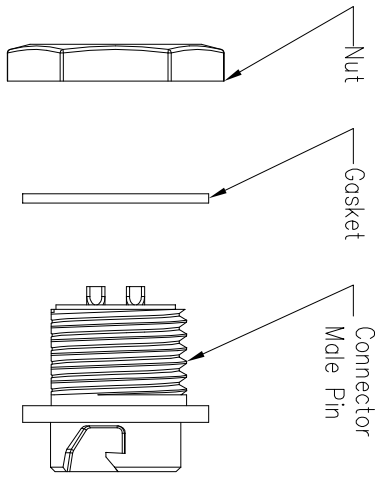
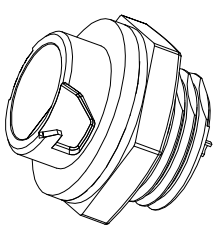
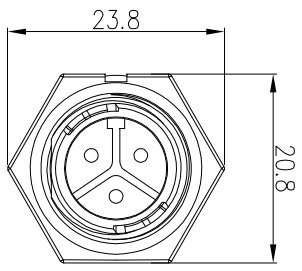
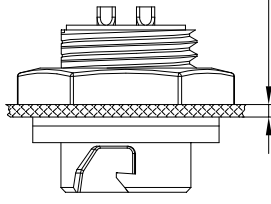
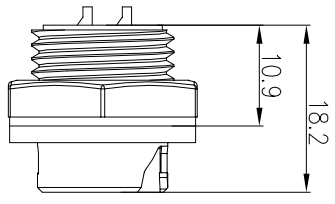
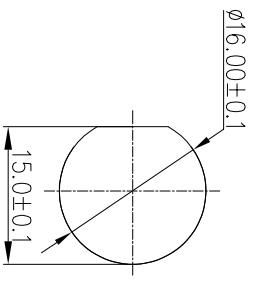


REV.	EN. NO.	DESCRIPTION	SIGN	DATE
C1	N/A	INITIAL DRAWING	Liu	2019/08/13



Specification:

1. Operation Temperature: -45°C~105°C.
2. Insulation Resistance: 100MΩ at DC500V.
3. Contact Resistance: <10mΩ.
4. Withstand Voltage: 2000V AC
5. Operating Current: 10A
6. Operating Voltage: AC 300V
7. Waterproof Rate: IP67 (Mated)
8. Housing: Nylon, Black
9. Male Pin: Copper Alloy, Gold Plated
10. Gasket: Silicon Gray
11. Panel Nut: Nylon, Orange
12. Torque Rate: 0.8~1.0N•m
13. RoHS Compliant.
14. UL Compliant.
15. Mating Cap P/N: 806-00053-01

1	2	3	4	5	6	7	8
<p>2 Pin P/N: 22002535-3</p>		<p>3 Pin P/N: 22003535-03</p>		<p>Pin Number</p> <p>22XXXX535-03</p>			
<p>UNIT: mm</p>		<p>DESCRIPTION</p> <p>Standard Series Push Lock Rear Mount With Male Pin</p>					
<p>TOLERANCE</p> <p>X: ±0.25</p> <p>XX: ±0.15</p> <p>XXX: ±0.05</p> <p>ANGLES: ±1°</p>		<p>SCALE: 1:1</p>		<p>SHEET 1 OF 1</p>		<p>REV: C1</p> <p>SIZE: A4</p> <p>* : Inspection Item</p>	
<p>Pin Assignments Front View</p>		<p>PART NO: 22XXXX535-03</p> <p>DRAWN BY: Liu</p> <p>DATE: 2019/08/13</p>					
<p>CHOGORI</p>		<p>DWG NO</p> <p>CUSTOMER</p>		<p>CHECKED BY: Mo</p> <p>DATE: 2019/08/13</p>		<p>APPROVED BY: Panson</p> <p>DATE: 2019/08/13</p>	