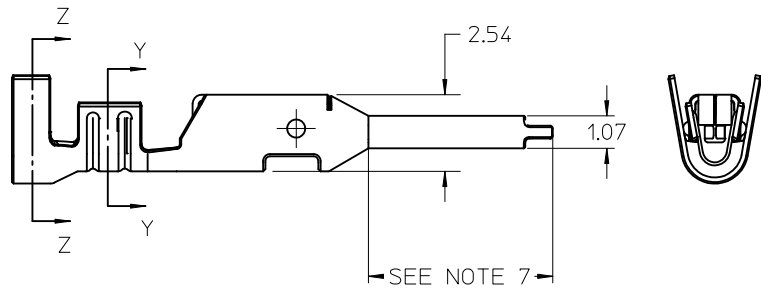
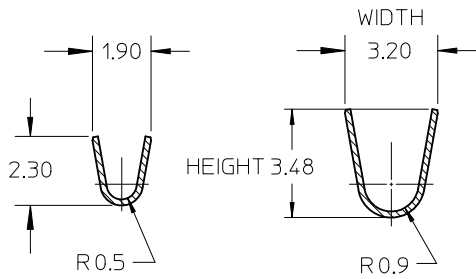
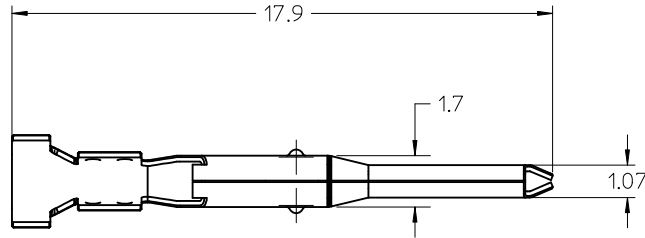
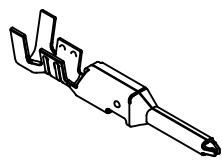


NOTES:

- MATERIAL: HIGH PERFORMANCE COPPER ALLOY
- FINISH:
 - 222 - OVERALL TIN: 100 MI MIN OVER NICKEL
 - 228 - SELECT GOLD: 30 MI MIN, SELECT TIN: 100 MI MIN OVER NICKEL
- PRODUCT SPECIFICATION: PS-46064-001
- PACKAGING:
 - REEL PACK PER : PK-46056-002
 - LOOSE PACK PER : PK-5556-003
- TERMINAL TO BE USED WITH ASSY NUMBER: 46065
- WIRE SPECIFICATION: SEE CHART.
- WHEN USING OVERALL TIN PLATED TERMINALS: FOR APPLICATIONS INVOLVING VIBRATION AND/OR THERMAL CYCLING, MOLEX STRONGLY RECOMMENDS THE USE OF NYE LUBRICANT, NYOGEL 760G, ON THE MATING END OF THE TERMINAL. LUBRICANT MAY BE APPLIED BEFORE OR AFTER THE TERMINALS ARE INSERTED INTO THE HOUSING.



SECTION Y-Y
CONDUCTOR CRIMP

SECTION Z-Z
INSULATION CRIMP

LOOSE PACKAGED MATERIAL NUMBER	REEL PACKAGED MATERIAL NUMBER	FINISH	WIRE SPEC	INSULATION DIA	INSULATION (CRIMPED)			CONDUCTOR (CRIMPED)				
					HEIGHT		WIDTH		HEIGHT		WIDTH	
					MIN	MAX	MIN	MAX	MIN	MAX	MIN	MAX
46056-0004	46056-0002	222 - TIN	UL1015 18/20 AWG	2.52 / 2.81	N/A	3.20	2.70	2.90	1.05	1.15	1.50	1.70
46056-0005	46056-0003	228 - SELECT GOLD	UL1015 18/20 AWG	2.52 / 2.81	N/A	3.20	2.70	2.90	1.05	1.15	1.50	1.70

UPDATE NOTE 4
 EC NO: UCP2011-1228
 DRWN: JJAGUILAR 2010/10/29
 CHKD:
 APPR: FSMITH 2010/11/09

QUALITY SYMBOLS

GENERAL TOLERANCES (UNLESS SPECIFIED)

	mm	INCH
4 PLACES	± ---	± ---
3 PLACES	± ---	± ---
2 PLACES	± 0.25	± ---
1 PLACE	± 0.38	± ---

ANGULAR ± 3 °

DRAFT WHERE APPLICABLE
MUST REMAIN
WITHIN DIMENSIONS

DIMENSION STYLE
MM ONLY

DRAWN BY: KSAMIEC DATE: 2007/03/22
 CHECKED BY: DATE:
 APPROVED BY: FSMITH DATE: 2010/11/09

MATERIAL NO. SEE CHART

SIZE A

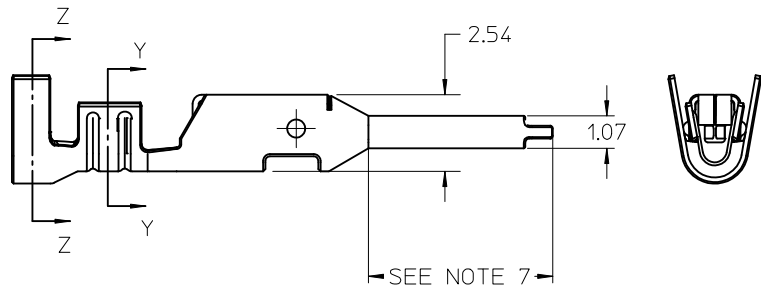
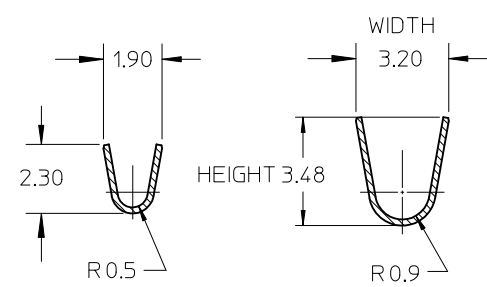
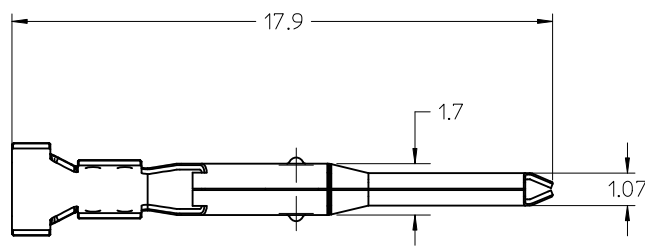
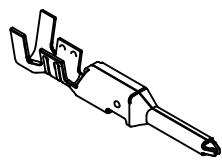
SCALE: 4:1
 DESIGN UNITS: METRIC
 THIRD ANGLE PROJECTION

TITLE: SEALED MINIFIT H20
PLUG TERMINAL

MOLEX MOLEX INCORPORATED

DOCUMENT NO. SD-46056-001 SHEET NO. 1 OF 1

THIS DRAWING CONTAINS INFORMATION THAT IS PROPRIETARY TO MOLEX INCORPORATED AND SHOULD NOT BE USED WITHOUT WRITTEN PERMISSION



- NOTES:
- MATERIAL: HIGH PERFORMANCE COPPER ALLOY
 - FINISH:
 - 222 - OVERALL TIN: 100 MI MIN OVER NICKEL
 - 228 - SELECT GOLD: 30 MI MIN, SELECT TIN: 100 MI MIN OVER NICKEL
 - PRODUCT SPECIFICATION: PS-46064-001
 - PACKAGING:
 - REEL PACK PER : PK-46056-002
 - LOOSE PACK PER : PK-5556-003
 - TERMINAL TO BE USED WITH ASSY NUMBER: 46065
 - WIRE SPECIFICATION: SEE CHART.
 - WHEN USING OVERALL TIN PLATED TERMINALS: FOR APPLICATIONS INVOLVING VIBRATION AND/OR THERMAL CYCLING, MOLEX STRONGLY RECOMMENDS THE USE OF NYE LUBRICANT, NYOGEL 760G, ON THE MATING END OF THE TERMINAL. LUBRICANT MAY BE APPLIED BEFORE OR AFTER THE TERMINALS ARE INSERTED INTO THE HOUSING.

SECTION Y-Y CONDUCTOR CRIMP
SECTION Z-Z INSULATION CRIMP

LOOSE PACKAGED MATERIAL NUMBER	REEL PACKAGED MATERIAL NUMBER	FINISH	WIRE SPEC	INSULATION DIA	INSULATION (CRIMPED)		CONDUCTOR (CRIMPED)					
					HEIGHT		WIDTH		HEIGHT		WIDTH	
					MIN	MAX	MIN	MAX	MIN	MAX	MIN	MAX
46056-0004	46056-0002	222 - TIN	UL1015 18/20 AWG	2.52 / 2.81	N/A	3.20	2.70	2.90	1.05	1.15	1.50	1.70
46056-0005	46056-0003	228 - SELECT GOLD	UL1015 18/20 AWG	2.52 / 2.81	N/A	3.20	2.70	2.90	1.05	1.15	1.50	1.70

UPDATE NOTE 4
EC NO: UCP2011-1228
DRWN: JJAGUILAR 2010/10/29
CHKD:
APPR: FSMITH 2010/11/09

QUALITY SYMBOLS

GENERAL TOLERANCES (UNLESS SPECIFIED)

	mm	INCH
4 PLACES	± ---	± ---
3 PLACES	± ---	± ---
2 PLACES	± 0.25	± ---
1 PLACE	± 0.38	± ---

ANGULAR ± 3 °

DRAFT WHERE APPLICABLE MUST REMAIN WITHIN DIMENSIONS

DIMENSION STYLE: MM ONLY

SCALE: 4:1

DESIGN UNITS: METRIC

THIRD ANGLE PROJECTION

DRAWN BY: KSAMIEC DATE: 2007/03/22
CHECKED BY: DATE:
APPROVED BY: FSMITH DATE: 2010/11/09

TITLE: SEALED MINIFIT H20 PLUG TERMINAL

MATERIAL NO.: SEE CHART

DOCUMENT NO.: SD-46056-001

SHEET NO.: 1 OF 1

THIS DRAWING CONTAINS INFORMATION THAT IS PROPRIETARY TO MOLEX INCORPORATED AND SHOULD NOT BE USED WITHOUT WRITTEN PERMISSION