

**Dear Customer,**

With this INFINEON Technologies Information Note we would like to inform you about the following

## **Change of leadframe design to close dambar**

N° 053/18

## Change of leadframe design to close dambar

► **Products affected:**

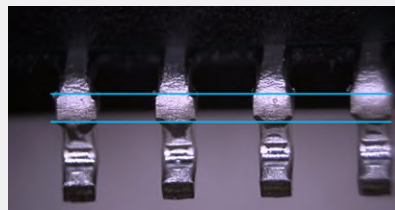
Please refer to attached affected product list 1\_cip05318

► **Detailed Change Information:**

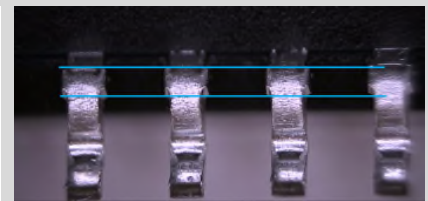
**Subject:** Change of leadframe design to close dambar

**Reason:** Harmonization of leadframe

**Description:** Old



New



► **Product Identification:**

n.a.

► **Impact of Change:**

No Impact on electrical parameters  
No Impact on pick and place at board assembly expected

► **Attachments:**

Affected product list 1\_cip05318

► **Intended start of delivery:**

13-November-2018

If you have any questions, please do not hesitate to contact your local Sales office.

### Information Note N° 053/18

Change of leadframe design to close dambar affecting BTS52\* and  
ITS5215LCUMA1



Sales name	SP number	OPN	Package
BTS5210L	SP000301612	BTS5210LAUMA1	PG-DSO-12
BTS5215L	SP000301613	BTS5215LAUMA1	PG-DSO-12
BTS5235-2L	SP000280715	BTS52352LAUMA1	PG-DSO-12
BTS5237-2L	SP000478830	BTS52372LAUMA1	PG-DSO-12
BTS5240L	SP000271660	BTS5240LAUMA1	PG-DSO-12
BTS5241-2L	SP000281081	BTS52412LAUMA1	PG-DSO-12
BTS5246-2L	SP000281083	BTS52462LAUMA1	PG-DSO-12
ITS5215L	SP000219826	ITS5215LCUMA1	PG-DSO-12