

DO NOT SCALE FROM THIS PRINT

DESIGNED & DIMENSIONED IN MILLIMETERS [INCHES]

BNC7T-J-P-XX-ST-TH2D

GENDER
-J: JACK

TERMINATION
-TH2D: DIE CAST THROUGH HOLE

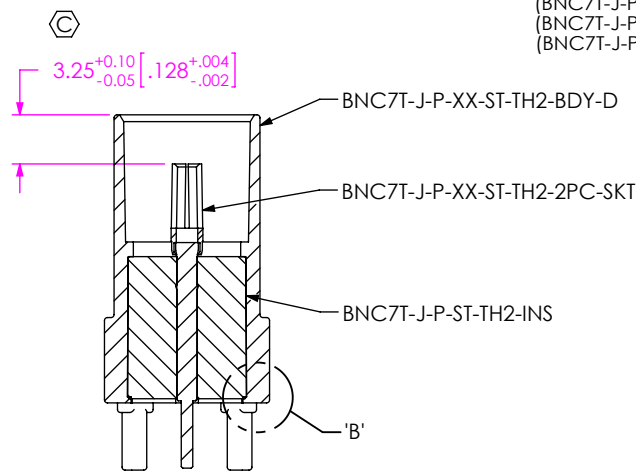
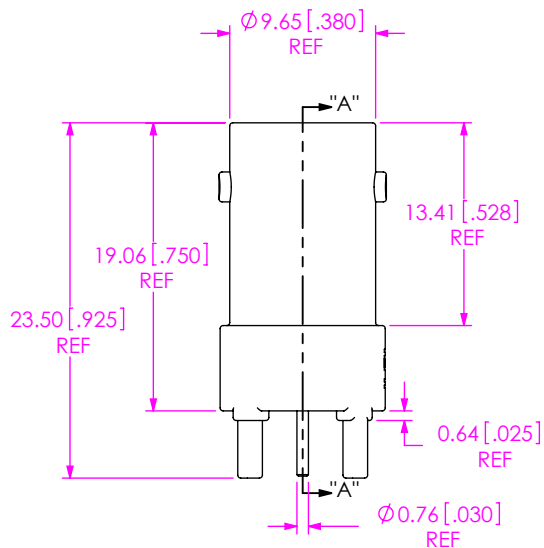
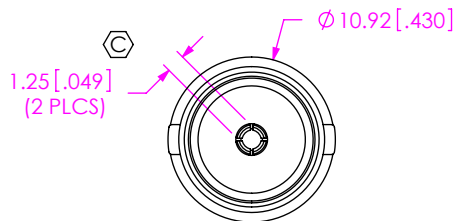
TYPE
-P: PCB

ORIENTATION
-ST: STRAIGHT

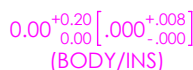
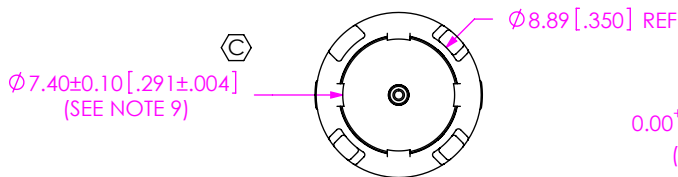
PLATING SPECIFICATION

-HN: HEAVY GOLD/NICKEL (SEE NOTES 6 & 7)
(BNC7T-J-P-DN-ST-TH2-BDY-D)
(BNC7T-J-P-ST-TH2-INS)
(BNC7T-J-P-HN-ST-TH2-2PC-SKT)

-GN: HEAVY GOLD/NICKEL (SEE NOTES 6 & 7)
(BNC7T-J-P-DN-ST-TH2-BDY-D)
(BNC7T-J-P-ST-TH2-INS)
(BNC7T-J-P-GN-ST-TH2-2PC-SKT)



SECTION "A"- "A"



DETAIL 'B'
SCALE 4 : 1

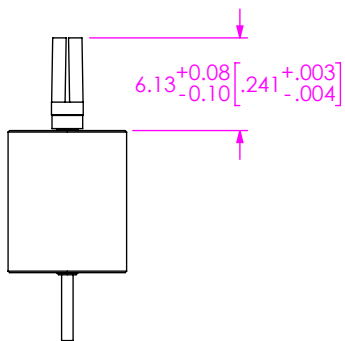


FIG 1
BNC7T-J-P-XX-ST-TH2D SHOWN

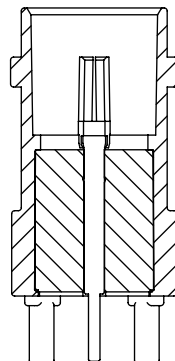
NOTES:

- Ⓢ REPRESENTS A CRITICAL DIMENSION.
- PUSHOUT FORCE FOR CENTER CONTACT: 26.69 N [6.0 LB] MIN.
- PUSHOUT FORCE FOR INSULATOR: 53.38 N [12.0 LB] MIN.
- SEE CO-HD-WI-3040-M RF PACKAGING STANDARD FOR PACKAGING INSTRUCTIONS.
PRODUCT TO BE PACKAGED IN TRAY TY-BNC001-1 WITH COVER TY-SMA001-2.
- ROHS COMPLIANT.
- PLATING: -H: .000030" MIN GOLD OVER .000050" MIN. NICKEL.
-G: .000010" MIN GOLD OVER .000050" MIN. NICKEL.
-N: .000100" MIN NICKEL.
- ASSEMBLY PLATING DESIGNATIONS:
-HN: (CENTER CONTACT)-H
(OUTER CONTACT)-N
-GN: (CENTER CONTACT)-G
(OUTER CONTACT)-N
- NOTE DELETED.
- 0.10 [.004] BURR ALLOWED IN SPECIFIED AREA ONLY.

<p>UNLESS OTHERWISE SPECIFIED DIMENSIONS ARE IN MILLIMETERS [INCHES]</p> <p>TOLERANCES ARE:</p> <p>DECIMALS ANGLES</p> <p>.X: ±0.3 [.01] 2°</p> <p>.XX: ±0.13 [.005]</p> <p>.XXX: ±0.051 [.0020]</p>	<p>PROPRIETARY NOTE</p> <p>THIS DOCUMENT CONTAINS CONFIDENTIAL AND PROPRIETARY INFORMATION AND ALL DESIGN, MANUFACTURING, REPRODUCTION, USE, PATENT RIGHTS AND SALES RIGHTS ARE EXPRESSLY RESERVED BY SAMTEC, INC. THIS DOCUMENT SHALL NOT BE DISCLOSED, IN WHOLE OR PART, TO ANY UNAUTHORIZED PERSON OR ENTITY NOR REPRODUCED, TRANSFERRED OR INCORPORATED IN ANY OTHER PROJECT IN ANY MANNER WITHOUT THE EXPRESS WRITTEN CONSENT OF SAMTEC, INC.</p>	<p>samtec</p> <p>520 PARK EAST BLVD, NEW ALBANY, IN 47150 PHONE: 812-944-6733 FAX: 812-948-5047 e-Mail info@SAMTEC.com code 55322</p> <p>DESCRIPTION: TRUE 75OHM BNC ELEVATED STRAIGHT JACK</p> <p>DWG. NO. BNC7T-J-P-XX-ST-TH2D</p> <p>BY: D. PARMAR 10/21/2009 SHEET 1 OF 2</p>
<p>MATERIAL: SHELL: ZINC CONTACT: COPPER ALLOY DIELECTRIC: PTFE</p> <p>DO NOT SCALE DRAWING SHEET SCALE: 2:1</p>		



IN-PROCESS 1
INSERT CONTACT INTO INSULATOR

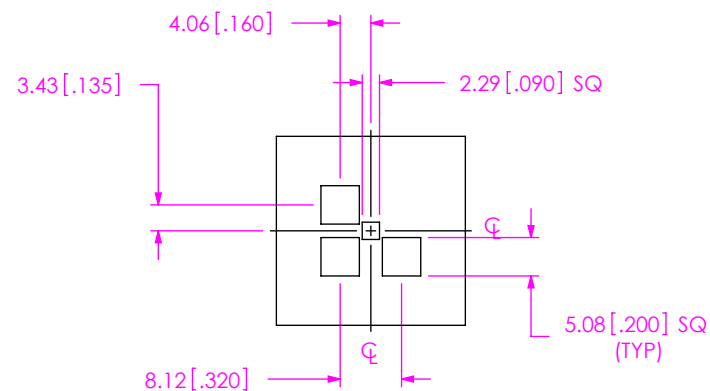


IN-PROCESS 2
INSERT INSULATOR INTO BODY
& SWAGE RETENTION TABS

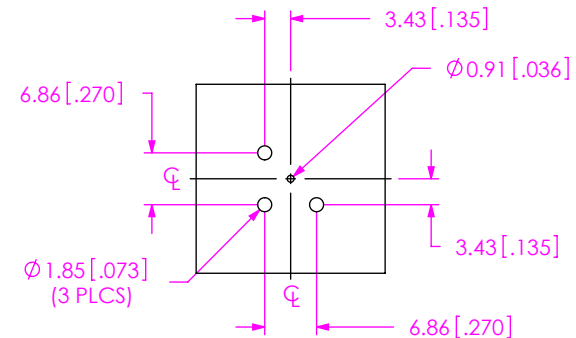
CRITICAL DIMENSION INSPECTION INSTRUCTION TABLE

ASSEMBLY OPERATION	START-UP INSPECTION INSPECT CODE A	IN-PROCESS INSPECTION INSPECT CODE B
INSERT PINS		C1
INSERT INSULATORS		C2, C3

NOTE:
STENCIL TO BE 0.15 [.006] THICK.



RECOMMENDED STENCIL LAYOUT



RECOMMENDED PCB LAYOUT

PROPRIETARY NOTE
THIS DOCUMENT CONTAINS INFORMATION
CONFIDENTIAL AND PROPRIETARY TO
SAMTEC, INC. AND SHALL NOT BE REPRODUCED
OR TRANSFERRED TO OTHER DOCUMENTS OR
DISCLOSED TO OTHERS OR USED FOR ANY
PURPOSE OTHER THAN THAT WHICH IT WAS
OBTAINED WITHOUT THE EXPRESSED WRITTEN
CONSENT OF SAMTEC, INC.



520 PARK EAST BLVD, NEW ALBANY, IN 47150
PHONE: 812-944-6733 FAX: 812-948-5047
e-Mail info@SAMTEC.com code 55322

SHEET SCALE: 2:1

DESCRIPTION:
TRUE 75OHM BNC ELEVATED STRAIGHT JACK

DWG. NO.
BNC7T-J-P-XX-ST-TH2D

BY: D. PARMAR 10/21/2009 SHEET 2 OF 2