



Ledil Oy  
Salorankatu 10  
FI-24240 SALO  
FINLAND  
[www.ledil.com](http://www.ledil.com)

## Ledil Globally

---

Local sales and technical support available in following countries  
Benelux, China, Germany, Italy, Portugal, Spain, UK, USA.  
See [www.ledil.com](http://www.ledil.com)

Shipping locations  
Salo, Finland  
Hong Kong, China

Authorized Distribution Partners  
See [www.ledil.com/where\\_to\\_buy](http://www.ledil.com/where_to_buy)

---



Q2/2012

# SINGLE LENSES



**LISA2-PIN**  
D= 9.9 MM  
PMMA

## CREE XP-E / XP-G

FP11055\_LISA2-RS-PIN  
FP10995\_LISA2-M-PIN  
FP11125\_LISA2-O-PIN  
FP11851\_LISA2-O-90-PIN  
FP10996\_LISA2-W-PIN  
FP10997\_LISA2-WW-PIN  
FP11429\_LISA2-WWW-PIN

## CREE XB-D

FP10995\_LISA2-M-PIN  
FP10996\_LISA2-W-PIN  
FP10997\_LISA2-WW-PIN  
FP11429\_LISA2-WWW-PIN

## PHILIPS LUMILEDS

**LUXEON REBEL ES**  
FP11056\_LISA2-RS-PIN  
FP10992\_LISA2-M-PIN  
FP11126\_LISA2-O-PIN  
FP11853\_LISA2-O-90-PIN  
FP10993\_LISA2-W-PIN  
FP10997\_LISA2-WW-PIN  
FP11429\_LISA2-WWW-PIN

## PHILIPS LUMILEDS

**LUXEON REBEL**  
FP11056\_LISA2-RS-PIN  
FP10992\_LISA2-M-PIN  
FP11126\_LISA2-O-PIN  
FP11853\_LISA2-O-90-PIN  
FP10993\_LISA2-W-PIN  
FP10994\_LISA2-WW-PIN  
FP11951\_LISA2-WWW-PIN

## OSRAM OSOLON

FP11047\_LISA2-RS-PIN  
FP11001\_LISA2-M-PIN  
FP11124\_LISA2-O-PIN  
FP11852\_LISA2-O-90-PIN  
FP11002\_LISA2-W-PIN  
FP11003\_LISA2-WW-PIN  
FP11957\_LISA2-WWW-PIN

## NICHIA NCS19 / NVS19

FP11057\_LISA2-RS-PIN  
FP10998\_LISA2-M-PIN  
FP11127\_LISA2-O-PIN  
FP11855\_LISA2-O-90-PIN  
FP10999\_LISA2-W-PIN  
FP11000\_LISA2-WW-PIN  
FP11954\_LISA2-WWW-PIN



**LISA2-PIN**  
D= 9.9 MM  
PMMA

## SHARP DOUBLE DOME

FP11055\_LISA2-RS-PIN  
FP10995\_LISA2-M-PIN  
FP11125\_LISA2-O-PIN  
FP11851\_LISA2-O-90-PIN  
FP10996\_LISA2-W-PIN  
FP10997\_LISA2-WW-PIN  
FP11429\_LISA2-WWW-PIN

## SEOUL Z5

FP11055\_LISA2-RS-PIN  
FP10995\_LISA2-M-PIN  
FP11125\_LISA2-O-PIN  
FP11851\_LISA2-O-90-PIN  
FP10996\_LISA2-W-PIN  
FP10997\_LISA2-WW-PIN  
FP11429\_LISA2-WWW-PIN



**LISA2-CLIP**  
D= 9.9 MM  
PMMA

## CREE XP-E / XP-G

FP11085\_LISA2-RS-CLIP  
FP11075\_LISA2-M-CLIP  
FP11121\_LISA2-O-CLIP  
FP11856\_LISA2-O-90-CLIP  
FP11076\_LISA2-W-CLIP

## PHILIPS LUMILEDS

**LUXEON REBEL ES**  
FP11086\_LISA2-RS-CLIP  
FP11072\_LISA2-M-CLIP  
FP11122\_LISA2-O-CLIP  
FP11858\_LISA2-O-90-CLIP  
FP11073\_LISA2-W-CLIP  
FP11077\_LISA2-WW-CLIP  
FP11431\_LISA2-WWW-CLIP

## PHILIPS LUMILEDS

**LUXEON REBEL**  
FP11086\_LISA2-RS-CLIP  
FP11072\_LISA2-M-CLIP  
FP11122\_LISA2-O-CLIP  
FP11858\_LISA2-O-90-CLIP  
FP11073\_LISA2-W-CLIP  
FP11074\_LISA2-WW-CLIP  
FP11952\_LISA2-WWW-CLIP



**LISA2-CLIP**  
D=9.9 MM  
PMMA

## OSRAM OSOLON

FP11084\_LISA2-RS-CLIP  
FP11081\_LISA2-M-CLIP  
FP11120\_LISA2-O-CLIP  
FP11857\_LISA2-O-90-CLIP  
FP11082\_LISA2-W-CLIP  
FP11083\_LISA2-WW-CLIP  
FP11958\_LISA2-WWW-CLIP

## NICHIA NCS19 / NVS19

FP11087\_LISA2-RS-CLIP  
FP11078\_LISA2-M-CLIP  
FP11123\_LISA2-O-CLIP  
FP11860\_LISA2-O-90-CLIP  
FP11079\_LISA2-W-CLIP  
FP11080\_LISA2-WW-CLIP  
FP11955\_LISA2-WWW-CLIP

## SHARP DOUBLE DOME

FP11085\_LISA2-RS-CLIP  
FP11075\_LISA2-M-CLIP  
FP11121\_LISA2-O-CLIP  
FP11856\_LISA2-O-90-CLIP  
FP11076\_LISA2-W-CLIP  
FP11077\_LISA2-WW-CLIP  
FP11431\_LISA2-WWW-CLIP

## SEOUL Z5

FP11085\_LISA2-RS-CLIP  
FP11075\_LISA2-M-CLIP  
FP11121\_LISA2-O-CLIP  
FP11856\_LISA2-O-90-CLIP  
FP11076\_LISA2-W-CLIP  
FP11077\_LISA2-WW-CLIP  
FP11431\_LISA2-WWW-CLIP

# SINGLE LENSES



**LISA**  
D= 10.8 - 11 MM  
PMMA

**CREE XP-E / XP-G**  
CP11627\_LISA-RS  
CP10641\_LISA-SS

**OSRAM PLATINUM / DRAGON**  
CP11626\_LISA-RS  
CP10444\_LISA-SS

**PHILIPS LUMILEDS  
LUXEON REBEL**  
CP11629\_LISA-RS  
CP10544\_LISA-SS

**SEOUL Z5**  
CP11627\_LISA-RS  
CP10641\_LISA-SS



**TINA3**  
D= 16.1 MM  
PMMA

**CREE XP-E / XP-G**  
FA11905\_TINA3-S  
FA11870\_TINA3-OO  
FA11824\_TINA3-W  
FA11825\_TINA3-WW  
FA11826\_TINA3-WWW

**CREE XB-D**  
FA11824\_TINA3-W  
FA11870\_TINA3-OO

**CREE XT-E**  
FA11902\_TINA-3-W  
FA11904\_TINA-3-WWW

**PHILIPS LUMILEDS  
LUXEON REBEL**  
FA11905\_TINA3-S  
FA11870\_TINA3-OO  
FA11824\_TINA3-W  
FA11825\_TINA3-WW  
FA11826\_TINA3-WWW



**TINA3**  
D= 16.1 MM  
PMMA

**PHILIPS LUMILEDS  
LUXEON REBEL ES**  
FA11905\_TINA3-S  
FA11870\_TINA3-OO  
FA11824\_TINA3-W  
FA11825\_TINA3-WW  
FA11826\_TINA3-WWW

**OSRAM OSOLON**  
FA11905\_TINA3-S  
FA11870\_TINA3-OO  
FA11824\_TINA3-W  
FA11825\_TINA3-WW  
FA11826\_TINA3-WWW

**NICHIA NCS19 / NVS19**  
FA11905\_TINA3-S  
FA11870\_TINA3-OO  
FA11824\_TINA3-W  
FA11825\_TINA3-WW  
FA11826\_TINA3-WWW

**SHARP DOUBLE DOME**  
FA11905\_TINA3-S  
FA11870\_TINA3-OO  
FA11824\_TINA3-W  
FA11825\_TINA3-WW  
FA11826\_TINA3-WWW

**SEOUL Z5**  
FA11905\_TINA3-S  
FA11870\_TINA3-OO  
FA11824\_TINA3-W  
FA11825\_TINA3-WW  
FA11826\_TINA3-WWW

**CREE XM-L**  
FA11905\_TINA-3-S  
FA11902\_TINA-3-W  
FA11903\_TINA-3-WW  
FA11904\_TINA-3-WWW



**TINA**  
D= 16.1 MM  
PMMA

**CREE XP-E / XP-G**  
FA10887\_TINA-RS  
FA10644\_TINA-D  
FA10645\_TINA-M  
FA11200\_TINA-O  
FA10838\_TINA-W  
FA11019\_TINA-WW

**CREE MX6 / MX3**  
FA10888\_TINA-RS  
FA10646\_TINA-D  
FA10647\_TINA-M  
FA11201\_TINA-O  
FA10839\_TINA-W  
FA10901\_TINA-WW

**NICHIA 6Nx83 / 3Nx83**  
FA10888\_TINA-RS  
FA10646\_TINA-D  
FA10647\_TINA-M  
FA11201\_TINA-O  
FA10839\_TINA-W  
FA10901\_TINA-WW

**OSRAM OSOLON**  
FA11208\_TINA-RS  
FA11205\_TINA-D  
FA11206\_TINA-M  
FA11204\_TINA-O  
FA11207\_TINA-W

**OSRAM PLATINUM/DRAGON+**  
FA10886\_TINA-RS  
FA10642\_TINA-D  
FA10643\_TINA-M  
FA11199\_TINA-O

**PHILIPS LUMILEDS  
LUXEON REBEL**  
FA11212\_TINA-RS  
FA11209\_TINA-D  
FA11210\_TINA-M  
FA11203\_TINA-O  
FA11211\_TINA-W

**PHILIPS LUMILEDS  
LUXEON REBEL ES**  
FA12038\_TINA-RS  
FA12310\_TINA-D  
FA12040\_TINA-M

**SEOUL Z5**  
FA10887\_TINA -RS  
FA10644\_TINA -D  
FA11200\_TINA -O  
FA10645\_TINA -M  
FA10838\_TINA -W  
FA11019\_TINA-WW

# SINGLE LENSES



**TINA2**  
D= 16.1 MM  
PMMA

**CREE XP-E / XP-G**  
CA11016\_TINA2-RS  
CA11420\_TINA2-D  
CA11017\_TINA2-M  
CA11052\_TINA2-O  
CA12056\_TINA2-W

CP12677\_TINA2-RS  
CP12678\_TINA2-D  
CP12679\_TINA2-M  
CP12680\_TINA2-O  
CP12681\_TINA2-W

**CREE XB-D**

CP12671\_TINA2-D  
CP12672\_TINA2-M  
CP12673\_TINA2-O  
CP12674\_TINA2-W

**CREE XT-E**

CA11017\_TINA2-M  
CA11052\_TINA2-O  
CA11420\_TINA2-D

**CREE MX6 / MX3**

CA11171\_TINA2-RS  
CA11172\_TINA2-D  
CA11173\_TINA2-O CA11174\_TINA2-M  
CA11175\_TINA2-W  
CA11176\_TINA2-WW

**NICHIA 6Nx83 / 3Nx83**

CA11171\_TINA2-RS  
CA11172\_TINA2-D  
CA11173\_TINA2-O CA11174\_TINA2-M  
CA11175\_TINA2-W  
CA11176\_TINA2-WW

CP12682\_TINA2-RS  
CP12683\_TINA2-D  
CP12684\_TINA2-O  
CP12685\_TINA2-M  
CP12686\_TINA2-W

**OSRAM OSLON**

CA12374\_TINA2-RS  
CA12376\_TINA2-SS  
CA12375\_TINA2-D  
CA12377\_TINA2-M  
CA12379\_TINA2-O  
CA12378\_TINA2-W

CP12687\_TINA2-RS  
CP12688\_TINA2-D  
CP12689\_TINA2-O  
CP12690\_TINA2-M



**TINA2**  
D= 16.1 MM  
PMMA

**OSRAM PLATINUM/DAGON+**  
CA11847\_TINA2-RS  
CA12046\_TINA2-D  
CA12047\_TINA2-O  
CA11848\_TINA2-M

**NICHIA NCS19 / NVS19**

CA11020\_TINA2-RS  
CA11942\_TINA2-D  
CA11021\_TINA2-M  
CA11053\_TINA2-O  
CA11022\_TINA2-W

**SEOUL Z5**

CA11016\_TINA2-RS  
CA11420\_TINA2-D  
CA11017\_TINA2-M  
CA11052\_TINA2-O  
CA12056\_TINA2-W

**CITIZEN CL-L400**

CA12400\_TINA2-D  
CA12401\_TINA2-M  
CA12404\_TINA2-O  
CA12402\_TINA2-W

**AVAGO JADE**

CA12346\_TINA2-RS  
CA12347\_TINA2-D  
CA12348\_TINA2-M  
CA12349\_TINA2-O  
CA12350\_TINA2-W  
CA12403\_TINA2-WW



**TINA-O-PLUS**  
D= 16 MM  
PMMA

**OSRAM PLATINUM/DAGON+**  
C10449\_TINA-W

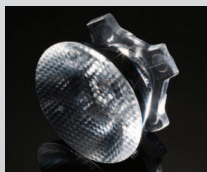


**TWIDDLE**  
D= 21.6 MM  
PMMA

**CREE MX6 / MX3**  
FA10734\_TWIDDLE-D  
FA10736\_TWIDDLE-M

**NICHIA 6Nx83 / 3Nx83**

FA10734\_TWIDDLE-D  
FA10736\_TWIDDLE-M



**HEIDI**  
D= 21.6 MM  
PMMA

**CREE XP-E / XP-G**

CA11663\_HEIDI-RS  
CA12242\_HEIDI-SS  
CA11264\_HEIDI-D  
CA11265\_HEIDI-M  
CA11266\_HEIDI-O  
CA11267\_HEIDI-O-90  
CA11268\_HEIDI-W  
CA12079\_HEIDI-W2

**CREE XB-D**

CA11663\_HEIDI-RS  
CA11264\_HEIDI-D  
CA11265\_HEIDI-M  
CA11266\_HEIDI-O  
CA11267\_HEIDI-O-90  
CA11268\_HEIDI-W  
CA12079\_HEIDI-W2

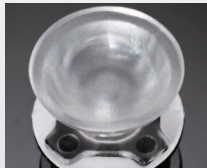
**PHILIPS LUMILEDS  
LUXEON REBEL**

CA11663\_HEIDI-RS  
CA12242\_HEIDI-SS  
CA11264\_HEIDI-D  
CA11265\_HEIDI-M  
CA11266\_HEIDI-O  
CA11267\_HEIDI-O-90  
CA11268\_HEIDI-W  
CA12079\_HEIDI-W2

**PHILIPS LUMILEDS  
LUXEON REBEL ES**

CA12537\_HEIDI-RS  
CA12530\_HEIDI-D  
CA12536\_HEIDI-M  
CA12079\_HEIDI-W2

## SINGLE LENSES



**HEIDI**  
D= 21.6 MM  
PMMA

### OSRAM OSOLON

CA11663\_HEIDI-RS  
CA12242\_HEIDI-SS  
CA11264\_HEIDI-D  
CA11265\_HEIDI-M  
CA11266\_HEIDI-O  
CA11267\_HEIDI-O-90  
CA11268\_HEIDI-W  
CA12079\_HEIDI-W2

### NICHIA NCS19 / NVS19

CA11663\_HEIDI-RS  
CA12242\_HEIDI-SS  
CA11264\_HEIDI-D  
CA11265\_HEIDI-M  
CA11266\_HEIDI-O  
CA11267\_HEIDI-O-90  
CA11268\_HEIDI-W  
CA12079\_HEIDI-W2

### SHARP DOUBLE DOME

CA11663\_HEIDI-RS  
CA12242\_HEIDI-SS  
CA11264\_HEIDI-D  
CA11265\_HEIDI-M  
CA11266\_HEIDI-O  
CA11267\_HEIDI-O-90  
CA11268\_HEIDI-W  
CA12079\_HEIDI-W2

### SEOUL Z5

CA11663\_HEIDI-RS  
CA12242\_HEIDI-SS  
CA11264\_HEIDI-D  
CA11265\_HEIDI-M  
CA11266\_HEIDI-O  
CA11267\_HEIDI-O-90  
CA11268\_HEIDI-W  
CA12079\_HEIDI-W2



**EMILY**  
D= 26 MM  
PMMA

### CREE XP-E / XP-G

CA11387\_EMILY-SS  
CA11388\_EMILY-M  
CA11391\_EMILY-M2  
CA11389\_EMILY-O  
CA11390\_EMILY-O-90  
CA11934\_EMILY-W

### CREE XT-E

CA12062\_EMILY-SS  
CA12064\_EMILY-M  
CA11934\_EMILY-W

### OSRAM OSOLON

CA11387\_EMILY-SS  
CA11388\_EMILY-M  
CA11391\_EMILY-M2  
CA11389\_EMILY-O  
CA11390\_EMILY-O-90  
CA11934\_EMILY-W

### PHILIPS LUMILEDS LUXEON REBEL

CA11387\_EMILY-SS  
CA11388\_EMILY-M  
CA11391\_EMILY-M2  
CA11389\_EMILY-O  
CA11390\_EMILY-O-90  
CA11934\_EMILY-W

### NICHIA NCS19 / NVS19

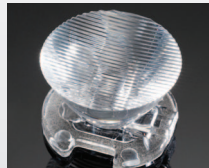
CA11387\_EMILY-SS  
CA11388\_EMILY-M  
CA11391\_EMILY-M2  
CA11389\_EMILY-O  
CA11390\_EMILY-O-90  
CA11934\_EMILY-W

### SHARP DOUBLE DOME

CA11387\_EMILY-SS  
CA11388\_EMILY-M  
CA11391\_EMILY-M2  
CA11389\_EMILY-O  
CA11390\_EMILY-O-90  
CA11934\_EMILY-W

### SEOUL Z5

CA11387\_EMILY-SS  
CA11388\_EMILY-M  
CA11391\_EMILY-M2  
CA11389\_EMILY-O  
CA11390\_EMILY-O-90  
CA11934\_EMILY-W



**EMILY**  
D= 26 MM  
PMMA

### CREE XM-L

CA12062\_EMILY-D  
CA12064\_EMILY-M  
CA12070\_EMILY-M2  
CA12066\_EMILY-O  
CA12068\_EMILY-O-90  
CA11934\_EMILY-W

### PHILIPS LUMILEDS LUXEON REBEL ES

CA12062\_EMILY-D  
CA12064\_EMILY-M  
CA12070\_EMILY-M2  
CA12066\_EMILY-O  
CA12068\_EMILY-O-90  
CA11934\_EMILY-W

## SINGLE LENSES



**SPUTNIK**  
D= 26 MM  
PMMA

### OSRAM PLATINUM/DAGON+

CA10318\_TITANUM-O-SS  
CA10252\_TITANUM-O-M  
CA10319\_TITANUM-O-O  
CA11240\_TITANUM-O-90  
CA10244\_TITANUM-O-W

### SEOUL P4

CA10321\_SPUTNIK-Z-SS  
CA10249\_SPUTNIK-Z-M  
CA10322\_SPUTNIK-Z-O  
CA10241\_SPUTNIK-Z-W

### SEOUL P5

CA10298\_SPUTNIK-R5



**IRINA**  
D= 24.7 MM  
PMMA

### CREE XP-E / XP-G

C11421\_IRINA-RS

### PHILIPS LUMILEDS

**LUXEON REBEL**  
C11421\_IRINA-RS

### OSRAM OSOLON

C11421\_IRINA-RS

### NICHIA NCS19 / NVS19

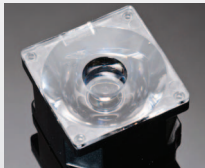
C11421\_IRINA-RS

### SHARP DOUBLE DOME

C11421\_IRINA-RS

### SEOUL Z5

C11421\_IRINA-RS



**ROSE**  
21.6 MM X 21.6 MM  
PC

### CREE XP-E / XP-G

FA10668\_CXP-RS  
FA10667\_CXP-SS  
FA10666\_CXP-D  
FA10665\_CXP-M  
FA10669\_CXP-O  
FA11153\_CXP-O-90  
FA10708\_CXP-W

### CREE MC-E

FA10679\_CMC-RS  
FA10678\_CMC-SS  
FA10677\_CMC-D  
FA10676\_CMC-M  
FA10680\_CMC-O  
FA11155\_CMC-O-90  
FA10714\_CMC-W

### CREE XM-L

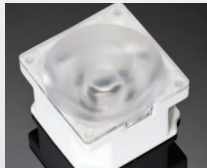
FA11908\_CXM-SS  
FA11909\_CXM-RS  
FA11910\_CXM-D  
FA11911\_CXM-M  
FA11912\_CXM-O  
FA11155\_CXM-O-90  
FA11942\_CXM-W

### SEOUL P4

FA10311\_SSS-RS  
FA10330\_SSS-SS  
FA10312\_SSS-D  
FA10313\_SSS-M  
FA10314\_SSS-O  
FA11149\_SSS-O-90  
FA10539\_SSS-W

### SEOUL Z5

FA10668\_CXP-RS  
FA10667\_CXP-SS  
FA10666\_CXP-D  
FA10665\_CXP-M  
FA10669\_CXP-O  
FA11153\_CXP-O-90  
FA10708\_CXP-W



**ROSE**  
21.6 MM X 21.6 MM  
PC (\*COP)

### NICHIA 6Nx83 / 3Nx83

FA10336\_NIS83-MX-RS  
FA10337\_NIS83-MX-SS  
FA10338\_NIS83-MX-D  
FA10339\_NIS83-MX-M  
FA10340\_NIS83-MX-O  
FA10903\_NIS83-MX-W  
FA11151\_NIS83-MX-O-90

### NICHIA NCCU033\*

FA10857\_NIS033U-RS  
FA10911\_NIS033U-SS  
FA10912\_NIS033U-M  
FA10913\_NIS033U-W

### PHILIPS LUMILEDS

#### LUXEON REBEL / REBEL ES

FX10856\_RES-RS  
FX10853\_RES-SS  
FX10852\_RES-D  
FX10851\_RES-M  
FX10854\_RES-O  
FX10855\_RES-W  
FX11157\_RES-O-90

### OSRAM PLATINUM / DRAGON+

FA10299\_OSS-RS  
FA10327\_OSS-SS  
FA10300\_OSS-D  
FA10301\_OSS-M  
FA10302\_OSS-O  
FA10342\_OSS-W  
FA11145\_OSS-O-90

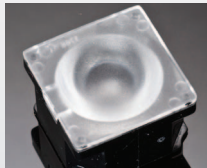
### CREE MX6 / MX3

FA10336\_NIS83-MX-RS  
FA10337\_NIS83-MX-SS  
FA10338\_NIS83-MX-D  
FA10339\_NIS83-MX-M  
FA10340\_NIS83-MX-O  
FA10903\_NIS83-MX-W  
FA11151\_NIS83-MX-O-90

### NICHIA 153

FA11233\_NIS53-SS  
FA11234\_NIS53-D  
FA11235\_NIS53-M  
FA11236\_NIS53-O  
FA11237\_NIS53-W-V6

# SINGLE LENSES



**LAURA**  
21.6 MM X 21.6 MM  
PMMA

#### CREE XP-E / XP-G

CA11353\_LAURA-RS  
CA11643\_LAURA-SS  
CA11360\_LAURA-D  
CA11355\_LAURA-M  
CA11365\_LAURA-O  
CA11525\_LAURA-REF-W  
CA12343\_LAURA-W  
CA11766\_LAURA-WW

#### CREE XT-E

CA11360\_LAURA-D  
CA11355\_LAURA-M  
CA12343\_LAURA-W

#### PHILIPS LUMILEDS

##### LUXEON REBEL / REBEL ES

CX11352\_LAURA-RS  
CX11645\_LAURA-SS  
CX11359\_LAURA-D  
CX11354\_LAURA-M  
CX11364\_LAURA-O  
CX11524\_LAURA-REF-W  
CX12568\_LAURA-W

#### NICHIA NCS19 / NVS19

CA11974\_LAURA-RS  
CA11977\_LAURA-SS  
CA11975\_LAURA-D  
CA11976\_LAURA-M  
CA11978\_LAURA-O  
CA11427\_LAURA-REF-W  
CA12570\_LAURA-W  
CA11978\_LAURA-WW



**LAURA**  
21.6 MM X 21.6 MM  
PMMA

#### CREE XP-E / XP-G

CA11959\_LAURA-RS-PIN  
CA12011\_LAURA-SS-PIN  
CA11960\_LAURA-D-PIN  
CA11837\_LAURA-M-PIN  
CA12012\_LAURA-O-PIN  
CA12344\_LAURA-W-PIN

#### CREE XB-D

CA12011\_LAURA-RS-PIN  
CA11837\_LAURA-M-PIN  
CA12012\_LAURA-O-PIN  
CA12344\_LAURA-W-PIN  
CA12325\_LAURA-WW-PIN

#### OSRAM OSLO

CA11959\_LAURA-RS-PIN  
CA12011\_LAURA-SS-PIN  
CA11960\_LAURA-D-PIN  
CA11837\_LAURA-M-PIN  
CA12012\_LAURA-O-PIN  
CA12344\_LAURA-W-PIN

#### NICHIA NCS19 / NVS19

CA11959\_LAURA-RS-PIN  
CA12011\_LAURA-SS-PIN  
CA11960\_LAURA-D-PIN  
CA11837\_LAURA-M-PIN  
CA12012\_LAURA-O-PIN  
CA12344\_LAURA-W-PIN

#### PHILIPS LUMILEDS

##### LUXEON REBEL / REBEL ES

CA11959\_LAURA-RS-PIN  
CA12011\_LAURA-SS-PIN  
CA11960\_LAURA-D-PIN  
CA11837\_LAURA-M-PIN  
CA12012\_LAURA-O-PIN  
CA12344\_LAURA-W-PIN

#### SEOUL Z5

CA11959\_LAURA-RS-PIN  
CA12011\_LAURA-SS-PIN  
CA11960\_LAURA-D-PIN  
CA11837\_LAURA-M-PIN  
CA12012\_LAURA-O-PIN  
CA12344\_LAURA-W-PIN

#### SHARP DOUBLE DOME

CA11959\_LAURA-RS-PIN  
CA12011\_LAURA-SS-PIN  
CA11960\_LAURA-D-PIN  
CA11837\_LAURA-M-PIN  
CA12012\_LAURA-O-PIN  
CA12344\_LAURA-W-PIN



**LAURA**  
21.6 MM X 21.6 MM  
PMMA

#### CREE XP-E / XP-G

CP12631\_LAURA-RS-PG  
CP12634\_LAURA-SS-PG  
CP12632\_LAURA-D-PG  
CP12633\_LAURA-M-PG  
CP12635\_LAURA-O-PG  
CP12636\_LAURA-W-PG  
CP12637\_LAURA-WW-PG

#### CREE XB-D

CP12631\_LAURA-RS-PG  
CP12634\_LAURA-SS-PG  
CP12632\_LAURA-D-PG  
CP12633\_LAURA-M-PG  
CP12635\_LAURA-O-PG  
CP12636\_LAURA-W-PG  
CP12637\_LAURA-WW-PG

#### OSRAM OSLO

CP12631\_LAURA-RS-PG  
CP12634\_LAURA-SS-PG  
CP12632\_LAURA-D-PG  
CP12633\_LAURA-M-PG  
CP12635\_LAURA-O-PG  
CP12636\_LAURA-W-PG  
CP12637\_LAURA-WW-PG

#### PHILIPS LUMILEDS

##### LUXEON REBEL / REBEL ES

CP12631\_LAURA-RS-PG  
CP12634\_LAURA-SS-PG  
CP12632\_LAURA-D-PG  
CP12633\_LAURA-M-PG  
CP12635\_LAURA-O-PG  
CP12636\_LAURA-W-PG  
CP12637\_LAURA-WW-PG

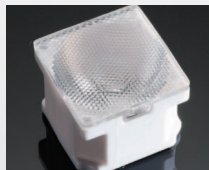
#### NICHIA NCS19 / NVS19

CP12631\_LAURA-RS-PG  
CP12634\_LAURA-SS-PG  
CP12632\_LAURA-D-PG  
CP12633\_LAURA-M-PG  
CP12635\_LAURA-O-PG  
CP12636\_LAURA-W-PG  
CP12637\_LAURA-WW-PG

#### SEOUL Z5

CP12631\_LAURA-RS-PG  
CP12634\_LAURA-SS-PG  
CP12632\_LAURA-D-PG  
CP12633\_LAURA-M-PG  
CP12635\_LAURA-O-PG  
CP12636\_LAURA-W-PG  
CP12637\_LAURA-WW-PG

# SINGLE LENSES



**ROSE**  
21.6 MM X 21.6 MM  
PMMA

## OSRAM PLATINUM / DRAGON+

CA10561\_OSS-2-RS  
CA10560\_OSS-2-SS  
CA10559\_OSS-2-D  
CA10569\_OSS-2-M  
CA10572\_OSS-2-O  
CA12081\_OSS2-WWW

## NICHIA 6Nx83 / 3Nx83

CA12124\_NIS83-MX-2-RS  
CA12123\_NIS83-MX-2-SS  
CA12122\_NIS83-MX-2-D  
CA12126\_NIS83-MX-2-M



**LEILA**  
D= 21.6 MM  
PMMA

## CREE XP-E / XP-G

FA10661\_LXP-RS  
FA10663\_LXP-D  
FA10660\_LXP-M  
FA11450\_LXP-M2  
FA11116\_LXP-O-90  
FA10662\_LXP-REC  
FA10832\_LXP-W

CA11481\_LXP2-RS  
CA11482\_LXP2-D  
CA11483\_LXP2-M  
CA11484\_LXP2-O-90  
CA12392\_LXP2-W

## CREE XB-D

CA12584\_LXB2-RS2  
CA12665\_LXB2-D  
CA12666\_LXB2-M  
CA12667\_LXB2-W

## CREE XT-E

FA10832\_LXP-W

CA11482\_LXP2-D  
CA11483\_LXP2-M



**LEILA**  
D= 21.6 MM  
PMMA

## OSRAM OSOLON

CP12412\_LOS-RS  
CP12413\_LOS-D  
CP12414\_LOS-M  
CP12415\_LOS-O-90  
CP12416\_LOS-W

## SEOUL Z5

FA10661\_LXP-RS  
FA10663\_LXP-D  
FA10660\_LXP-M  
FA11450\_LXP-M2  
FA11116\_LXP-O-90  
FA10662\_LXP-REC  
FA10832\_LXP-W

CA11481\_LXP2-RS  
CA11482\_LXP2-D  
CA11483\_LXP2-M  
CA11484\_LXP2-O-90  
CA12392\_LXP2-W

## CREE MC-E

FA10613\_LM1-RS  
FA10650\_LM1-D  
FA10614\_LM1-M  
FA11447\_LM1-M2  
FA11067\_LM1-O-90  
FA10615\_LM1-REC

CREE MX6 / MX3  
FA10696\_LN2-RS  
FA10695\_LN2-D  
FA10697\_LN2-M  
FA11452\_LN2-M2  
FA11108\_LN2-O-90  
FA10698\_LN2-REC

## SAMSUNG SUNNIX 5

FA11060\_LS5-RS  
FA11061\_LS5-D  
FA11062\_LS5-M  
FA11462\_LS5-M2  
FA11063\_LS5-O-90  
FA11064\_LS5-REC

PHILIPS LUMILEDS  
LUXEON REBEL  
CA12262\_LR2-RS  
CA11263\_LR2-D  
CA11264\_LR2-M  
CA11640\_LR2-O-90  
CA12393\_LR2-W

PHILIPS LUMILEDS  
LUXEON REBEL ES  
CA11929\_LR2-RS  
CA11930\_LR2-D  
CA11931\_LR2-M  
CA12629\_LR2-O-90  
CA12394\_LR2-W



**LEILA**  
D= 21.6 MM  
PMMA

## CREE XM-L

FA11937\_LXM-RS  
FA11938\_LXM-D  
FA11939\_LXM-M  
FA11941\_LXM-REC

## OSRAM PLATINUM / DRAGON+

FA10751\_L02-RS  
FA10753\_L02-D  
FA10750\_L02-M  
FA11453\_L02-M2  
FA11135\_L02-O-90  
FA10752\_L02-REC  
CA11543\_L02-W

## NICHIA 6Nx83 / 3Nx83

FA10696\_LN2-RS  
FA10695\_LN2-D  
FA10697\_LN2-M  
FA11452\_LN2-M2  
FA11108\_LN2-O-90  
FA10698\_LN2-REC



**LEILA**  
D= 21.6 MM  
PMMA

## CREE XP-E / XP-G

CP11631\_LXP3-RS  
CP11632\_LXP3-D  
CP11633\_LXP3-M  
CP11634\_LXP3-O-90  
CP12395\_LXP3-W

## CREE XB-D

CP12583\_LXB3-RS2  
CP12668\_LXB3-D  
CP12669\_LXB3-M  
CP12670\_LXB3-W

## NICHIA NCS19 / NVS19

CP10870\_LN3-RS  
CP10872\_LN3-D  
CP10869\_LN3-M  
CP12405\_LN3-O-90  
CP12406\_LN3-W



# SINGLE LENSES



**LEILA**  
D= 21.6 MM  
PMMA

## SEOUL Z5

CP11631\_LXP3-RS  
CP11632\_LXP3-D  
CP11633\_LXP3-M  
CP11634\_LXP3-O-90  
CP12395\_LXP3-W

## OSRAM DIAMOND DRAGON

FCN10796\_LD1-RS  
FCN10798\_LD1-D  
FCN10795\_LD1-M  
FCN11456\_LD1-M2  
FCN11107\_LD1-O-90  
FCN10797\_LD1-REC

## SEOUL P4

FCN10788\_LZ1-RS  
FCN10790\_LZ1-D  
FCN10787\_LZ1-M  
FCN11455\_LZ1-M2  
FCN11102\_LZ1-O-90  
FCN10789\_LZ1-REC

## LEDENGIN (5W)

FCN10784\_LE1-RS  
FCN10786\_LE1-D  
FCN10783\_LE1-M  
FCN11454\_LE1-M2  
FCN11103\_LE1-O-90  
FCN10785\_LE1-REC  
FCN12592\_LE1-D-COP (UV-LED)

## PHILIPS LUMILEDS

**LUXEON REBEL**  
FCN10804\_LR1-RS  
FCN10806\_LR1-D  
FCN10803\_LR1-M  
FCN11458\_LR1-M2  
FCN10805\_LR1-REC  
FCN11106\_LR1-O-90  
FCN10890\_LR1-W

## OSRAM PLATINUM / DRAGON+

FCN11257\_LO1-RS  
FCN11259\_LO1-D  
FCN11260\_LO1-O  
FCN11258\_LO1-M  
FCN11466\_LO1-M2  
FCN11262\_LO1-REC  
FCN11261\_LO1-W



**EYA**  
D= 30 MM  
PMMA

## OSRAM PLATINUM DRAGON

CA11956\_EYA-S  
CA11337\_EYA-O



**EVA**  
D= 37.7 MM  
PMMA

## CREE XM-L

CA12055\_EVA-S  
CA12057\_EVA-D  
CA12058\_EVA-M  
CA12059\_EVA-W  
CA12060\_EVA-WW

CP12196\_EVA-S  
CP12197\_EVA-D  
CP12198\_EVA-M  
CP12199\_EVA-W  
CP12200\_EVA-WW



**EVA**  
D= 35 MM  
PMMA

## CREE MC-E / XT-E / XM-L

C12041\_EVA-S  
C10684\_EVA-D  
C10685\_EVA-M  
C10686\_EVA-W  
C10909\_EVA-WW

## PHILIPS LUMILEDS

**LUXEON M**  
C10684\_EVA-D  
C10685\_EVA-M  
C10686\_EVA-W  
C10909\_EVA-WW



**MIRA**  
D= 32.4 MM  
PC

## CREE MT-G

C12500\_MIRA-M  
C12501\_MIRA-W  
C12502\_MIRA-WW

## PHILIPS LUMILEDS

**LUXEON M**  
C12500\_MIRA-M  
C12501\_MIRA-W  
C12502\_MIRA-WW

## BRIDGELUX ES-SERIES

C12500\_MIRA-M  
C12501\_MIRA-W  
C12502\_MIRA-WW

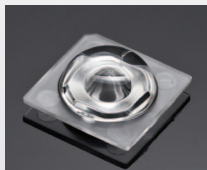


**MIRA (with holder)**  
D= 35 MM  
PC

## CREE MT-G

CA12503\_MIRA-M  
CA12504\_MIRA-W  
CA12505\_MIRA-WW

## SPECIALTY PRODUCTS



**SIRI-A**  
13.9 MM X 13.9 MM  
PMMA

**CREE XP-G**  
C12473\_SIRI-A  
CA12474\_SIRI-A



**JULIA-A**  
18.9 MM X 4.7 MM  
PMMA

**CREE XP-E / XP-G & SEOUL Z5**  
F11947\_JULIA-A  
FA11948\_JULIA-A

**PHILIPS LUMILEDS  
LUXEON REBEL / REBEL ES**  
F11947\_JULIA-A  
FA11948\_JULIA-A

**OSRAM OSOLON**  
F11947\_JULIA-A  
FA11948\_JULIA-A

**NICHIA NCS19 / NVS19**  
F11947\_JULIA-A  
FA11948\_JULIA-A



**RGBX**  
D= 30 MM  
PMMA

**CREE MC-E / MC-E RGB**  
CP10961\_RGBX-SS  
CP10944\_RGBX-M  
CP10945\_RGBX-O



**FLARE-B**  
29.0 MM X 24.5 MM X  
14.5 MM  
PMMA

**CREE XP-E / XP-G**  
C10946\_FLARE-B  
CA10932\_FLARE-B

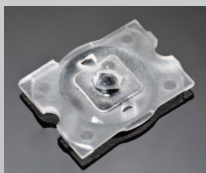
**OSRAM OSOLON**  
C10946\_FLARE-B  
CA10932\_FLARE-B

**NICHIA NCS19 / NVS19**  
C10946\_FLARE-B  
CA10932\_FLARE-B

**PHILIPS LUMILEDS  
LUXEON REBEL / REBEL ES**  
C10946\_FLARE-B  
CA10932\_FLARE-B

**SEOUL Z5**  
C10946\_FLARE-B  
CA10932\_FLARE-B

**SHARP DOUBLE DOME**  
C10946\_FLARE-B  
CA10932\_FLARE-B



**LOTTA-A**  
15.4 MM X 19.6 MM  
PMMA

**CREE XP-E / XP-G & SEOUL Z5**  
C11518\_LOTTA-A  
CA11519\_LOTTA-A

**PHILIPS LUMILEDS  
LUXEON REBEL**  
C11518\_LOTTA-A  
CA11519\_LOTTA-A

**OSRAM OSOLON**  
C11518\_LOTTA-A  
CA11519\_LOTTA-A

**NICHIA NCS19 / NVS19**  
C11518\_LOTTA-A  
CA11519\_LOTTA-A

**PHILIPS LUMILEDS  
LUXEON REBEL ES**  
C12353\_LOTTA-A2  
CA12396\_LOTTA-A2



**STRADA-S**  
15.5MM X 19.6 MM  
PMMA

**CREE XP-E / XP-G**  
CA11248\_STRADA-S  
C11249\_STRADA-S

**PHILIPS LUMILEDS  
LUXEON REBEL**  
CA11248\_STRADA-S  
C11249\_STRADA-S

**OSRAM OSOLON**  
CA11248\_STRADA-S  
C11249\_STRADA-S

**NICHIA NCS19 / NVS19**  
CA11248\_STRADA-S  
C11249\_STRADA-S

**SHARP DOUBLE DOME**  
CA11248\_STRADA-S  
C11249\_STRADA-S

**SEOUL Z5**  
CA11248\_STRADA-S  
C11249\_STRADA-S

## SPECIALTY PRODUCTS



**IRIS**  
D= 38 MM  
PMMA

**CREE MC-E**  
CN10861\_IRIS  
CN10953\_IRIS-M  
CN11470\_IRIS-O

**LUMINUS SST-50 / SST-90**  
CN11770\_IRIS  
CN11771\_IRIS-M  
CN11772\_IRIS-O

**CREE XP-E / XP-G**  
FCN12076\_IRIS-SCREW  
FCA12077\_IRIS

**PHILIPS LUMILEDS  
LUXEON REBEL**  
FCN12076\_IRIS-SCREW  
FCA12077\_IRIS

**NICHIA NCS19 / NVS19**  
FCN12076\_IRIS-SCREW  
FCA12077\_IRIS

**OSRAM OSOLON**  
FCN12076\_IRIS-SCREW  
FCA12077\_IRIS

**SHARP DOUBLE DOME**  
FCN12076\_IRIS-SCREW  
FCA12077\_IRIS

**SEOUL Z5**  
FCN12076\_IRIS-SCREW  
FCA12077\_IRIS



**VENLA-IRIS**  
D= 45 MM  
PC

**PHILIPS LUMILEDS  
LUXEON S**  
CP12090\_VENLA-S-IRIS



**SOPHIE**  
150 X 20 MM  
PMMA

**CREE XP-E / XP-G**  
C12446\_SOPHIE

**OSRAM OSOLON**  
C12446\_SOPHIE

**NICHIA NCS19 / NVS19**  
C12446\_SOPHIE



**STRADA-S**  
13.9 MM X 19.6 MM  
PMMA

**CREE XP-E / XP-G**  
C12114\_STRADA-S  
CA12115\_STRADA-S

**PHILIPS LUMILEDS  
LUXEON REBEL**  
CA12115\_STRADA-S  
C12114\_STRADA-S

**OSRAM OSOLON**  
CA12115\_STRADA-S  
C12114\_STRADA-S

**NICHIA NCS19 / NVS19**  
CA12115\_STRADA-S  
C12114\_STRADA-S

**SHARP DOUBLE DOME**  
CA12115\_STRADA-S  
C12114\_STRADA-S

**SEOUL Z5**  
CA12115\_STRADA-S  
C12114\_STRADA-S



**EMILY-WAS**  
D= 26 MM  
PMMA

**CREE XP-E / XP-G**  
CA11998\_EMILY-SS-WAS  
CA12000\_EMILY-O-WAS

**OSRAM OSOLON**  
CA11998\_EMILY-SS-WAS  
CA12000\_EMILY-O-WAS

**PHILIPS LUMILEDS  
LUXEON REBEL / REBEL ES**  
CA11998\_EMILY-SS-WAS  
CA12000\_EMILY-O-WAS

**NICHIA NCS19 / NVS19**  
CA11998\_EMILY-SS-WAS  
CA12000\_EMILY-O-WAS

**CREE XM-L**  
CA11998\_EMILY-SS-WAS  
CA12000\_EMILY-O-WAS

**SEOUL Z5**  
CA11998\_EMILY-SS-WAS  
CA12000\_EMILY-O-WAS

**SHARP DOUBLE DOME**  
CA11998\_EMILY-SS-WAS  
CA12000\_EMILY-O-WAS

# REFLECTORS



**REGINA**  
D= 19 MM  
METALLIZED PC

**CREE XP-E / XP-G**  
C11347\_REGINA

**OSRAM OSOLON**  
C11347\_REGINA

**PHILIPS LUMILEDS  
LUXEON REBEL**  
C11347\_REGINA

**NICHIA NCS19 / NVS19**  
C11347\_REGINA

**SHARP DOUBLE DOME**  
C11347\_REGINA

**SEOUL Z5**  
C11347\_REGINA



**BOOMERANG**  
D= 22.2 MM  
METALLIZED ABS

**LEDENGIN 5W/10W**  
C10437\_BOOMERANG



**BOOM**  
D= 22.2 MM  
METALLIZED PC

**CREE MC-E**  
CA10716\_BOOM-S  
CA10928\_BOOM-M  
CA10929\_BOOM-W



**LAURA REFLECTOR**  
21.6 MM X 21.6 MM  
PMMA

**CREE XP-E / XP-G**  
CA11525\_LAURA-REFL-W

**PHILIPS LUMILEDS  
LUXEON REBEL / REBEL ES**  
CA11524\_LAURA-REFL-W

**NICHIA NCS19 / NVS19**  
CA11427\_LAURA-REFL-W

**SHARP DOUBLE DOME**  
CA11525\_LAURA-REFL-W

**SEOUL Z5**  
CA11525\_LAURA-REFL-W



**BRIDGET / LILY / CINDY**  
D= 22.2 MM  
METALLIZED PC

**BRIDGELUX LS-SERIES**  
C10918\_BRIDGET-S  
C10919\_BRIDGET-M  
C10920\_BRIDGET-W

**LUMINUS SST50 / SST90**  
C10977\_LILY-S  
C10978\_LILY-M  
C10979\_LILY-W

**CITIZEN CL-L230**  
C10982\_CINDY-S  
C10983\_CINDY-M  
C10984\_CINDY-W

**CITIZEN CL-L251**  
C10859\_CINDY-S  
C10980\_CINDY-M  
C10981\_CINDY-W

**SHARP MINI ZENIGATA**  
C10982\_CINDY-S  
C10983\_CINDY-M  
C10984\_CINDY-W



**RITA**  
D= 36 X 29 MM  
PC

**CREE XP-E / XP-G / XM-L /  
XB-D / XT-E**  
C12512\_RITA-A  
CA12514\_RITA-A

**PHILIPS LUMILEDS  
LUXEON REBEL / REBEL ES**  
C12512\_RITA-A  
CA12514\_RITA-A

**LUMILEDS LUXEON M**  
C12512\_RITA-A  
CA12514\_RITA-A

**NICHIA NCS19 / NVS19**  
C12512\_RITA-A  
CA12514\_RITA-A

**OSRAM OSOLON**  
C12512\_RITA-A  
CA12514\_RITA-A



**MINNIE**  
D= 32.4 MM  
METALLIZED PC

**CREE MT-G**  
C12095\_MINNIE-M  
C11862\_MINNIE-W  
C12097\_MINNIE-WWWW



**MINNIE (with holder)**  
D= 35 MM  
METALLIZED PC

**CREE MT-G**  
CA12239\_MINNIE-M  
CA12096\_MINNIE-W  
CA12240\_MINNIE-WWWW

# REFLECTORS



**TYRA (TYCO)**  
D= 40 MM  
METALLIZED PC

**CREE MP-L**  
C11394\_TYRA-S  
C11395\_TYRA-M  
C11396\_TYRA-W



**TYRA2**  
D= 40 MM  
METALLIZED PC

**CREE MP-L**  
CA11475\_TYRA2-S  
CA11476\_TYRA2-M  
CA11477\_TYRA2-W



**TYRA3**  
D= 40 MM  
METALLIZED PC

**CITIZEN CL-230**  
C12358\_TYRA3-W  
C12359\_TYRA3-WW

**NICHIA NSBLL110**  
C12358\_TYRA3-W  
C12359\_TYRA3-WW



**BROOKE**  
D= 45 MM  
METALLIZED PC

**BRIDGELUX ES-SERIES**  
CA11181\_BROOKE-S  
CA11182\_BROOKE-M  
CA11183\_BROOKE-W



**BROOKE-SCR**  
D= 45 MM  
METALLIZED PC

**CITIZEN CL-L330 / CLL030**  
C12083\_BROOKE-SCR-M  
C12084\_BROOKE-SCR-W

**CITIZEN CL-L230**  
CP12351\_BROOKE-SCR-M  
CP12352\_BROOKE-SCR-W

**CREE CXA20**  
C12083\_BROOKE-SCR-M  
C12084\_BROOKE-SCR-W

**SHARP MEGAZENIGATA**  
C12083\_BROOKE-SCR-M  
C12084\_BROOKE-SCR-W



**BROOKE (MOLEX)**  
D= 45 MM  
METALLIZED PC

**BRIDGELUX ES-SERIES**  
C11506\_BROOKE-S  
C11507\_BROOKE-M  
C11508\_BROOKE-W

**CITIZEN CL-L330**  
C12119\_BROOKE-M  
C12120\_BROOKE-W



**VENLA**  
D= 45 MM  
METALLIZED PC

**PHILIPS LUMILEDS  
LUXEON S**  
C11773\_VENLA-S  
C11775\_VENLA-M  
C11776\_VENLA-W  
C11777\_VENLA-WW



**BARBARA**  
D= 70 MM  
METALLIZED PC

**BRIDGELUX ES-SERIES**  
C11552\_BARBARA-S  
C11553\_BARBARA-W  
C12461\_BARBARA-WW

**CITIZEN CL-L330**  
C11552\_BARBARA-S  
C11553\_BARBARA-W  
C12461\_BARBARA-WW

**SHARP MEGAZENIGATA**  
C11552\_BARBARA-S  
C11553\_BARBARA-W  
C12461\_BARBARA-WW

**CREE CXA20**  
C11552\_BARBARA-S  
C11553\_BARBARA-W  
C12461\_BARBARA-WW

**NICHIA COB**  
C11552\_BARBARA-S  
C11553\_BARBARA-W  
C12461\_BARBARA-WW

# REFLECTORS



**BRITNEY**  
D= 70 MM  
METALLIZED PC

**BRIDGELUX RS-SERIES**  
CA11401\_BRITNEY-M  
CA11402\_BRITNEY-W



**MIRELLA**  
D= 50 MM  
METALLIZED PC

**CITIZEN CLL010 / CLL020 / CLL030**  
C12476\_MIRELLA-50-S  
C12477\_MIRELLA-50-M  
C12478\_MIRELLA-50-W  
CN12483\_MIRELLA-50-S-DL  
CN12484\_MIRELLA-50-M-DL  
CN12485\_MIRELLA-50-W-DL

**SHARP MEGAZENIGATA**  
C12476\_MIRELLA-50-S  
C12477\_MIRELLA-50-M  
C12478\_MIRELLA-50-W  
CN12483\_MIRELLA-50-S-DL  
CN12484\_MIRELLA-50-M-DL  
CN12485\_MIRELLA-50-W-DL

**CREE XM-L**  
C12480\_MIRELLA-50-S-PIN  
C12481\_MIRELLA-50-M-PIN  
C12482\_MIRELLA-50-W-PIN  
CN12486\_MIRELLA-50-S-PIN-DL  
CN12487\_MIRELLA-50-M-PIN-DL  
CN12488\_MIRELLA-50-W-PIN-DL

**PHILIPS LUMILEDS  
LUXEON M**  
C12480\_MIRELLA-50-S-PIN  
C12481\_MIRELLA-50-M-PIN  
C12482\_MIRELLA-50-W-PIN  
CN12486\_MIRELLA-50-S-PIN-DL  
CN12487\_MIRELLA-50-M-PIN-DL  
CN12488\_MIRELLA-50-W-PIN-DL



**LENA**  
D= 74 MM  
METALLIZED PC

**BRIDGELUX ES**  
CN12600\_LENINA-S  
CN12601\_LENINA-M  
CN12602\_LENINA-W  
CN12603\_LENINA-S-DL  
CN12604\_LENINA-M-DL  
CN12605\_LENINA-W-DL

**CREE CXA20**  
CN12638\_LENINA-S  
CN12639\_LENINA-M  
CN12640\_LENINA-W  
CN12641\_LENINA-S-DL  
CN12642\_LENINA-M-DL  
CN12643\_LENINA-W-DL

**SHARP MEGAZENIGATA**  
CN12644\_LENINA-S  
CN12645\_LENINA-M  
CN12646\_LENINA-W  
CN12647\_LENINA-S-DL  
CN12648\_LENINA-M-DL  
CN12649\_LENINA-W-DL

**CITIZEN CL-L340**  
CN12650\_LENINA-S  
CN12651\_LENINA-M  
CN12652\_LENINA-W  
CN12653\_LENINA-S-DL  
CN12654\_LENINA-M-DL  
CN12655\_LENINA-W-DL

**CITIZEN CLL030**  
CN12700\_LENINA-S  
CN12701\_LENINA-M  
CN12702\_LENINA-W  
CN12703\_LENINA-S-DL  
CN12704\_LENINA-M-DL  
CN12705\_LENINA-W-DL

**CITIZEN CLL040**  
CN12706\_LENINA-S  
CN12707\_LENINA-M  
CN12708\_LENINA-W  
CN12709\_LENINA-S-DL  
CN12710\_LENINA-M-DL  
CN12711\_LENINA-W-DL



**LENA**  
D= 74 MM  
METALLIZED PC

**BRIDGELUX RS**  
CN12656\_LENINA-S  
CN12657\_LENINA-M  
CN12658\_LENINA-W  
CN12659\_LENINA-S-DL  
CN12660\_LENINA-M-DL  
CN12661\_LENINA-W-DL



**LENA**  
D= 111 MM  
METALLIZED PC

**NICHIA COB110 / 204**  
CN12099\_LENA-S  
CN12110\_LENA-S-DL  
CN12162\_LENA-M  
CN12165\_LENA-M-DL  
CN12100\_LENA-W  
CN12111\_LENA-W-DL

**CITIZEN CL-L340**  
CN12101\_LENA-S  
CN12112\_LENA-S-DL  
CN12161\_LENA-M  
CN12166\_LENA-M-DL  
CN12102\_LENA-W  
CN12113\_LENA-W-DL

**CITIZEN CLL030**  
CN12712\_LENA-S  
CN12713\_LENA-M  
CN12714\_LENA-W  
CN12718\_LENA-S-DL  
CN12719\_LENA-M-DL  
CN12720\_LENA-W-DL

**CITIZEN CLL040**  
CN12715\_LENA-S  
CN12716\_LENA-M  
CN12717\_LENA-W  
CN12721\_LENA-S-DL  
CN12722\_LENA-M-DL  
CN12723\_LENA-W-DL

## REFLECTORS



LENA  
D= 111 MM  
METALLIZED PC

**CREE CXA20**  
CN12106\_LENA-S  
CN12107\_LENA-S-DL  
CN12163\_LENA-M  
CN12167\_LENA-M-DL  
CN12108\_LENA-W  
CN12109\_LENA-W-DL

**BRIDGELUX ES-SERIES**  
CN12157\_LENA-S  
CN12159\_LENA-S-DL  
CN12164\_LENA-M  
CN12168\_LENA-M-DL  
CN12158\_LENA-W  
CN12160\_LENA-W-DL

**BRIDGELUX RS-SERIES**  
CN12301\_LENA-S  
CN12304\_LENA-S-DL  
CN12302\_LENA-M  
CN12305\_LENA-M-DL  
CN12303\_LENA-W  
CN12306\_LENA-W-DL

**SHARP MEGAZENIGATA**  
CN12293\_LENA-S  
CN12296\_LENA-S-DL  
CN12294\_LENA-M  
CN12297\_LENA-M-DL  
CN12295\_LENA-W  
CN12298\_LENA-W-DL



LENA  
D= 111 MM  
METALLIZED PC

**CITIZEN CL-340**  
CN12367\_LENA-FRESNEL



LISA2 REFLECTOR  
D= 9.9 MM  
PC

**CREE XP-E / XP-G**  
C12469\_LISA2-R-PIN

**CREE XB-D**  
C12469\_LISA2-R-PIN

**PHILIPS LUMILEDS  
LUXEON REBEL / REBEL ES**  
C12469\_LISA2-R-PIN

**PHILIPS LUMILEDS  
LUXEON A**  
C12469\_LISA2-R-PIN

**OSRAM OSLON**  
C12469\_LISA2-R-PIN

**NICHIA NVS19 / NCS19**  
C12469\_LISA2-R-PIN

**SHARP DOUBLE DOME**  
C12469\_LISA2-R-PIN

**SEOUL Z5**  
C12469\_LISA2-R-PIN

## MULTIPLE LENSES



**SATU**  
D= 21.8 MM (3UP)  
PMMA

**CREE XP-E / XP-G**  
C11916\_SATU-S  
C11917\_SATU-O  
C11602\_SATU-M  
C11544\_SATU-W

**PHILIPS LUMILEDS  
LUXEON REBEL**  
C11916\_SATU-S  
C11917\_SATU-O  
C11602\_SATU-M  
C11544\_SATU-W

**OSRAM OSOLON**  
C11916\_SATU-S  
C11917\_SATU-O  
C11602\_SATU-M  
C11544\_SATU-W

**NICHIA NCS19 / NVS19**  
C11916\_SATU-S  
C11917\_SATU-O  
C11602\_SATU-M  
C11544\_SATU-W

**SEOUL Z5**  
C11916\_SATU-S  
C11917\_SATU-O  
C11602\_SATU-M  
C11544\_SATU-W

**SHARP DOUBLE DOME**  
C11916\_SATU-S  
C11917\_SATU-O  
C11602\_SATU-M  
C11544\_SATU-W



**CUTE-3**  
D= 35 MM (3UP)  
PMMA

**CREE XP-E / XP-G**  
C10754\_CUTE-3-SS  
C10755\_CUTE-3-M  
C10756\_CUTE-3-W

**CREE XT-E**  
C10754\_CUTE-3-SS  
C10755\_CUTE-3-M  
C10756\_CUTE-3-W

**PHILIPS LUMILEDS  
LUXEON REBEL / REBEL ES**  
C10754\_CUTE-3-SS  
C10755\_CUTE-3-M  
C10756\_CUTE-3-W

**NICHIA NCS19 / NVS19**  
C10754\_CUTE-3-SS  
C10755\_CUTE-3-M  
C10756\_CUTE-3-W

**OSRAM OSOLON**  
C10754\_CUTE-3-SS  
C10755\_CUTE-3-M  
C10756\_CUTE-3-W

**SHARP DOUBLE DOME**  
C10754\_CUTE-3-SS  
C10755\_CUTE-3-M  
C10756\_CUTE-3-W

**CREE XM-L**  
C10754\_CUTE-3-SS  
C10755\_CUTE-3-M  
C10756\_CUTE-3-W

**SEOUL Z5**  
C10754\_CUTE-3-SS  
C10755\_CUTE-3-M  
C10756\_CUTE-3-W

**OSRAM PLATINUM/DAGON+**  
C10710\_CUTE-3-S  
C10711\_CUTE-3-M  
C10712\_CUTE-3-W



**GT3**  
D= 35 MM (3UP)  
PMMA

**CREE XP-E / XP-G**  
C10891\_GT3-S  
C10892\_GT3-M  
C10893\_GT3-W  
C11624\_GT3-WW

**PHILIPS LUMILEDS  
LUXEON REBEL / REBEL ES**  
C10891\_GT3-S  
C10892\_GT3-M  
C10893\_GT3-W  
C11624\_GT3-WW

**OSRAM OSOLON**  
C10891\_GT3-S  
C10892\_GT3-M  
C10893\_GT3-W  
C11624\_GT3-WW

**NICHIA NCS19 / NVS19**  
C10891\_GT3-S  
C10892\_GT3-M  
C10893\_GT3-W  
C11624\_GT3-WW

**SHARP DOUBLE DOME**  
C10891\_GT3-S  
C10892\_GT3-M  
C10893\_GT3-W  
C11624\_GT3-WW

**SEOUL Z5**  
C10891\_GT3-S  
C10892\_GT3-M  
C10893\_GT3-W  
C11624\_GT3-WW



## MULTIPLE LENSES



**ANNA-3**  
D= 40 MM (3UP)  
PMMA

### CREE XP-E / XP-G

C11710\_ANNA-40-3-S  
C11711\_ANNA-40-3-M  
C11712\_ANNA-40-3-W

### CREE XB-D

C11711\_ANNA-40-3-M  
C11712\_ANNA-40-3-W

### CREE XT-E

C11711\_ANNA-40-3-M  
C11712\_ANNA-40-3-W

### OSRAM OSOLON

C11710\_ANNA-40-3-S  
C11711\_ANNA-40-3-M  
C11712\_ANNA-40-3-W

### PHILIPS LUMILEDS LUXEON REBEL / REBEL ES

C11710\_ANNA-40-3-S  
C11711\_ANNA-40-3-M  
C11712\_ANNA-40-3-W

### NICHIA NCS19 / NVS19

C11710\_ANNA-40-3-S  
C11711\_ANNA-40-3-M  
C11712\_ANNA-40-3-W

### SEOUL Z5

C11710\_ANNA-40-3-S  
C11711\_ANNA-40-3-M  
C11712\_ANNA-40-3-W

### SHARP DOUBLE DOME

C11710\_ANNA-40-3-S  
C11711\_ANNA-40-3-M  
C11712\_ANNA-40-3-W



**ANNA-4**  
D= 40 MM (4UP)  
PMMA

### CREE XP-E / XP-G

C11793\_ANNA-40-4-S  
C11794\_ANNA-40-4-M  
C11795\_ANNA-40-4-W

### CREE XB-D

C11794\_ANNA-40-4-M  
C11795\_ANNA-40-4-W

### CREE XT-E

C11794\_ANNA-40-4-M  
C11795\_ANNA-40-4-W

### OSRAM OSOLON

C11793\_ANNA-40-4-S  
C11794\_ANNA-40-4-M  
C11795\_ANNA-40-4-W

### PHILIPS LUMILEDS LUXEON REBEL / REBEL ES

C11793\_ANNA-40-4-S  
C11794\_ANNA-40-4-M  
C11795\_ANNA-40-4-W

### NICHIA NCS19 / NVS19

C11793\_ANNA-40-4-S  
C11794\_ANNA-40-4-M  
C11795\_ANNA-40-4-W

### SEOUL Z5

C11793\_ANNA-40-4-S  
C11794\_ANNA-40-4-M  
C11795\_ANNA-40-4-W

### SHARP DOUBLE DOME

C11793\_ANNA-40-4-S  
C11794\_ANNA-40-4-M  
C11795\_ANNA-40-4-W



**CUTE-4**  
D= 35 MM (4UP)  
PMMA

### CREE MX6 / MX3

C10812\_CUTE-4-M  
C10813\_CUTE-4-W

### NICHIA 6Nx83 / 3Nx83

C10812\_CUTE-4-M  
C10813\_CUTE-4-W

## MULTIPLE LENSES



**GT4**  
D= 35 MM (4UP)  
PMMA

### CREE XP-E / XP-G

C10921\_GT4-S  
C10922\_GT4-M  
C10923\_GT4-W  
C10975\_GT4-WW

### CREE XB-D

C10921\_GT4-S  
C10922\_GT4-M  
C10923\_GT4-W  
C10924\_GT4-WW

### PHILIPS LUMILEDS

**LUXEON REBEL**  
C10971\_GT4-S  
C10972\_GT4-M  
C10973\_GT4-W  
C10974\_GT4-WW

### PHILIPS LUMILEDS

**LUXEON REBEL ES**  
C10921\_GT4-S  
C10922\_GT4-M  
C10923\_GT4-W  
C10975\_GT4-WW

### OSRAM OSOLON

C10921\_GT4-S  
C10922\_GT4-M  
C10923\_GT4-W  
C10975\_GT4-WW

### NICHIA NCS19 / NVS19

C10971\_GT4-S  
C10972\_GT4-M  
C10973\_GT4-W  
C10974\_GT4-WW

### SHARP DOUBLE DOME

C10921\_GT4-S  
C10922\_GT4-M  
C10923\_GT4-W  
C10975\_GT4-WW

### SEOUL Z5

C10921\_GT4-S  
C10922\_GT4-M  
C10923\_GT4-W  
C10975\_GT4-WW



**ANNA-5**  
D= 40 MM (5UP)  
PMMA

### CREE XP-E / XP-G

C11713\_ANNA-40-5-S  
C11714\_ANNA-40-5-M  
C11715\_ANNA-40-5-W

### CREE XB-D

C11714\_ANNA-40-5-M  
C11715\_ANNA-40-5-W

### CREE XT-E

C11714\_ANNA-40-5-M  
C11715\_ANNA-40-5-W

### OSRAM OSOLON

C11713\_ANNA-40-5-S  
C11714\_ANNA-40-5-M  
C11715\_ANNA-40-5-W

### PHILIPS LUMILEDS

**LUXEON REBEL / REBEL ES**  
C11713\_ANNA-40-5-S  
C11714\_ANNA-40-5-M  
C11715\_ANNA-40-5-W

### NICHIA NCS19 / NVS19

C11713\_ANNA-40-5-S  
C11714\_ANNA-40-5-M  
C11715\_ANNA-40-5-W

### SEOUL Z5

C11713\_ANNA-40-5-S  
C11714\_ANNA-40-5-M  
C11715\_ANNA-40-5-W

### SHARP DOUBLE DOME

C11713\_ANNA-40-5-S  
C11714\_ANNA-40-5-M  
C11715\_ANNA-40-5-W



**ANNA-6**  
D= 40 MM (6UP)  
PMMA

### CREE XP-E / XP-G

C11805\_ANNA-40-6-S  
C11806\_ANNA-40-6-M  
C11807\_ANNA-40-6-W

### CREE XB-D

C11806\_ANNA-40-6-M  
C11807\_ANNA-40-6-W

### CREE XT-E

C11806\_ANNA-40-6-M  
C11807\_ANNA-40-6-W

### OSRAM OSOLON

C11805\_ANNA-40-6-S  
C11806\_ANNA-40-6-M  
C11807\_ANNA-40-6-W

### PHILIPS LUMILEDS

**LUXEON REBEL / REBEL ES**  
C11805\_ANNA-40-6-S  
C11806\_ANNA-40-6-M  
C11807\_ANNA-40-6-W

### NICHIA NCS19 / NVS19

C11805\_ANNA-40-6-S  
C11806\_ANNA-40-6-M  
C11807\_ANNA-40-6-W

### SEOUL Z5

C11805\_ANNA-40-6-S  
C11806\_ANNA-40-6-M  
C11807\_ANNA-40-6-W

### SHARP DOUBLE DOME

C11805\_ANNA-40-6-S  
C11806\_ANNA-40-6-M  
C11807\_ANNA-40-6-W

## MULTIPLE LENSES



**ANNA-7**  
D= 40 MM (7UP)  
PMMA

**CREE XP-E / XP-G**

C11716\_ANNA-40-7-S  
C11717\_ANNA-40-7-M  
C11718\_ANNA-40-7-W

**CREE XB-D**

C11717\_ANNA-40-7-M  
C11718\_ANNA-40-7-W

**CREE XT-E**

C11717\_ANNA-40-7-M  
C11718\_ANNA-40-7-W

**OSRAM OSOLON**

C11716\_ANNA-40-7-S  
C11717\_ANNA-40-7-M  
C11718\_ANNA-40-7-W

**PHILIPS LUMILEDS**

**LUXEON REBEL / REBEL ES**

C11716\_ANNA-40-7-S  
C11717\_ANNA-40-7-M  
C11718\_ANNA-40-7-W

**NICHIA NCS19 / NVS19**

C11716\_ANNA-40-7-S  
C11717\_ANNA-40-7-M C11718\_ ANNA-40-7-W

**SEOUL Z5**

C11716\_ANNA-40-7-S  
C11717\_ANNA-40-7-M  
C11718\_ANNA-40-7-W

**SHARP DOUBLE DOME**

C11716\_ANNA-40-7-S  
C11717\_ANNA-40-7-M  
C11718\_ANNA-40-7-W



**ANNA-3**  
D= 50 MM (3UP)  
PMMA

**CREE XP-E / XP-G**

C11606\_ANNA-50-3-S  
C11607\_ANNA-50-3-M  
C11608\_ANNA-50-3-W

**CREE XB-D**

C11607\_ANNA-50-3-M  
C11608\_ANNA-50-3-W

**CREE XT-E**

C11607\_ANNA-50-3-M  
C11608\_ANNA-50-3-W

**OSRAM OSOLON**

C11606\_ANNA-50-3-S  
C11607\_ANNA-50-3-M  
C11608\_ANNA-50-3-W

**PHILIPS LUMILEDS**

**LUXEON REBEL / REBEL ES**

C11606\_ANNA-50-3-S  
C11607\_ANNA-50-3-M  
C11608\_ANNA-50-3-W

**NICHIA NCS19 / NVS19**

C11606\_ANNA-50-3-S  
C11607\_ANNA-50-3-M  
C11608\_ANNA-50-3-W

**SEOUL Z5**

C11606\_ANNA-50-3-S  
C11607\_ANNA-50-3-M  
C11608\_ANNA-50-3-W

**SHARP DOUBLE DOME**

C11606\_ANNA-50-3-S  
C11607\_ANNA-50-3-M  
C11608\_ANNA-50-3-W



**MARTHA / TUIJA**  
D= 50 MM (3UP)  
PMMA

**PLATINUM/DAGON+**

C10366\_PLATINUM-3-SS  
C10367\_PLATINUM-3-M  
C10365\_PLATINUM-3-W

**CREE XB-D**

C11191\_TUIJA-3-W  
C11192\_TUIJA-3-SS  
C11193\_TUIJA-3-M  
C12150\_TUIJA-3-M2

**CREE XP-E / XP-G**

C11192\_TUIJA-3-SS  
C11193\_TUIJA-3-M  
C11191\_TUIJA-3-W

**PHILIPS LUMILEDS LUXEON**

**REBEL / REBEL ES**

C11192\_TUIJA-3-SS  
C11193\_TUIJA-3-M  
C11191\_TUIJA-3-W

**OSRAM OSOLON**

C11193\_TUIJA-3-M  
C11192\_TUIJA-3-SS  
C11191\_TUIJA-3-W

**NICHIA NCS19 / NVS19**

C11192\_TUIJA-3-SS  
C11193\_TUIJA-3-M  
C11191\_TUIJA-3-W

**SHARP DOUBLE DOME**

C11192\_TUIJA-3-SS  
C11193\_TUIJA-3-M  
C11191\_TUIJA-3-W

**SEOUL Z5**

C11192\_TUIJA-3-SS  
C11193\_TUIJA-3-M  
C11191\_TUIJA-3-W

## MULTIPLE LENSES



**ANNA-4**  
D= 50 MM (4UP)  
PMMA

### CREE XP-E / XP-G

C11799\_ANNA-50-4-S  
C11800\_ANNA-50-4-M  
C11801\_ANNA-50-4-W

### CREE XB-D

C11800\_ANNA-50-4-M  
C11801\_ANNA-50-4-W

### CREE XT-E

C11800\_ANNA-50-4-M  
C11801\_ANNA-50-4-W

### OSRAM OSOLON

C11799\_ANNA-50-4-S  
C11800\_ANNA-50-4-M  
C11801\_ANNA-50-4-W

### PHILIPS LUMILEDS LUXEON REBEL / REBEL ES

C11799\_ANNA-50-4-S  
C11800\_ANNA-50-4-M  
C11801\_ANNA-50-4-W

### NICHIA NCS19 / NVS19

C11799\_ANNA-50-4-S  
C11800\_ANNA-50-4-M  
C11801\_ANNA-50-4-W

### SEOUL Z5

C11799\_ANNA-50-4-S  
C11800\_ANNA-50-4-M  
C11801\_ANNA-50-4-W

### SHARP DOUBLE DOME

C11799\_ANNA-50-4-S  
C11800\_ANNA-50-4-M  
C11801\_ANNA-50-4-W



**ANNA-5**  
D= 50 MM (5UP)  
PMMA

### CREE XP-E / XP-G

C11612\_ANNA-50-5-S  
C11613\_ANNA-50-5-M  
C11614\_ANNA-50-5-W

### CREE XB-D

C11613\_ANNA-50-5-M  
C11614\_ANNA-50-5-W

### CREE XT-E

C11613\_ANNA-50-5-M  
C11614\_ANNA-50-5-W

### OSRAM OSOLON

C11612\_ANNA-50-5-S  
C11613\_ANNA-50-5-M  
C11614\_ANNA-50-5-W

### PHILIPS LUMILEDS LUXEON REBEL / REBEL ES

C11612\_ANNA-50-5-S  
C11613\_ANNA-50-5-M  
C11614\_ANNA-50-5-W

### NICHIA NCS19 / NVS19

C11612\_ANNA-50-5-S C11613\_ANN  
A-50-5-M  
C11614\_ANNA-50-5-W

### SEOUL Z5

C11612\_ANNA-50-5-S  
C11613\_ANNA-50-5-M  
C11614\_ANNA-50-5-W

### SHARP DOUBLE DOME

C11612\_ANNA-50-5-S  
C11613\_ANNA-50-5-M  
C11614\_ANNA-50-5-W



**ANNA-6**  
D= 50 MM (6UP)  
PMMA

### CREE XP-E / XP-G

C11811\_ANNA-50-6-S  
C11812\_ANNA-50-6-M  
C11813\_ANNA-50-6-W

### CREE XB-D

C11812\_ANNA-50-6-M  
C11813\_ANNA-50-6-W

### CREE XT-E

C11812\_ANNA-50-6-M  
C11813\_ANNA-50-6-W

### OSRAM OSOLON

C11811\_ANNA-50-6-S  
C11812\_ANNA-50-6-M  
C11813\_ANNA-50-6-W

### PHILIPS LUMILEDS LUXEON REBEL / REBEL ES

C11811\_ANNA-50-6-S  
C11812\_ANNA-50-6-M  
C11813\_ANNA-50-6-W

### NICHIA NCS19 / NVS19

C11811\_ANNA-50-6-S  
C11812\_ANNA-50-6-M  
C11813\_ANNA-50-6-W

### SEOUL Z5

C11811\_ANNA-50-6-S  
C11812\_ANNA-50-6-M  
C11813\_ANNA-50-6-W

### SHARP DOUBLE DOME

C11811\_ANNA-50-6-S  
C11812\_ANNA-50-6-M  
C11813\_ANNA-50-6-W

## MULTIPLE LENSES



**ANNA-7**  
D= 50 MM (3UP)  
PMMA

**CREE XP-E / XP-G**  
C11670\_ANNA-7-S  
C11679\_ANNA-7-M  
C11682\_ANNA-7-W

**CREE XB-D**  
C11679\_ANNA-7-M  
C11682\_ANNA-7-W

**CREE XT-E**  
C11679\_ANNA-7-M  
C11682\_ANNA-7-W

**OSRAM OSOLON**  
C11670\_ANNA-7-S  
C11679\_ANNA-7-M  
C11682\_ANNA-7-W

**PHILIPS LUMILEDS  
LUXEON REBEL / REBEL ES**  
C11670\_ANNA-7-S  
C11679\_ANNA-7-M  
C11682\_ANNA-7-W

**NICHIA NCS19 / NVS19**  
C11670\_ANNA-7-S  
C11679\_ANNA-7-M  
C11682\_ANNA-7-W

**SEOUL Z5**  
C11670\_ANNA-7-S  
C11679\_ANNA-7-M  
C11682\_ANNA-7-W

**SHARP DOUBLE DOME**  
C11670\_ANNA-7-S  
C11679\_ANNA-7-M  
C11682\_ANNA-7-W



**TAMPA**  
D= 38 MM (7UP)  
PMMA

**NICHIA 6Nx83 / 3Nx83**  
C10373\_NIS83-MX-7-M  
C10633\_NIS83-MX-7-MD  
C10585\_NIS83-MX-7-W  
C10586\_NIS83-MX-7-WW

**CREE MX6 / MX3**  
C10373\_NIS83-MX-7-M  
C10633\_NIS83-MX-7-MD  
C10585\_NIS83-MX-7-W  
C10586\_NIS83-MX-7-WW

**PHILIPS LUMILEDS LUXEON  
REBEL / REBEL ES**  
C11232\_RER-7-MD  
C11230\_RER-7-W  
C11231\_RER-7-WW



**PENTA**  
D= 35 MM (5UP)  
PMMA

**OSRAM PLATINUM/DAGON+**  
C10472\_RER-5-M

**CREE MX6 / MX3**  
C11281\_NIS83-MX-5-D  
C10472\_RER-5-M  
C10814\_NIS83-MX-5-W

**NICHIA 6Nx83 / 3Nx83**  
C11281\_NIS83-MX-5-D  
C10472\_RER-5-M  
C10814\_NIS83-MX-5-W



**MARTHA / DOLLY**  
D= 50 MM (3UP)  
PMMA

**PLATINUM/DAGON+**  
C10268\_TITANUM-3-S  
CA10368\_TITANUM-3-M

**NICHIA 6Nx83 / 3Nx83**  
C10436\_NIS83-MX-3-M  
C10364\_NIS83-MX-3-W

**SEOUL P3 / SEOUL P4**  
C10257\_LAIKA-3-S  
CA10370\_LAIKA-3-M  
C10363\_LAIKA-3-W

**CREE MX6 / MX3**  
C10436\_NIS83-MX-3-M  
C10364\_NIS83-MX-3-W



**PENTA**  
D= 35 MM (5UP)  
PMMA

**PHILIPS LUMILEDS  
LUXEON REBEL**  
C10472\_RER-5-M

**CREE XP-E / XP-G**  
F10390\_PENTA-5-M  
C10472\_RER-5-M

**SHARP DOUBLE DOME**  
F10390\_PENTA-5-M  
C10472\_RER-5-M

**SEOUL Z5**  
F10390\_PENTA-5-M  
C10472\_RER-5-M

## MULTIPLE LENSES



**QUAK**  
D= 50 MM (4UP)  
PMMA

**CREE MC-E**  
C10702\_ROCKET-4-W

**PLATINUM/DAGON+**  
C10704\_PLATINUM-4-OS  
C10703\_PLATINUM-4-OM

**NICHIA 6Nx83 / 3Nx83**  
C10385\_NIS83-MX-4-SS  
C10386\_NIS83-MX-4-M  
C10387\_NIS83-MX-4-W

**CREE MX6 / MX3**  
C10385\_NIS83-MX-4-SS  
C10386\_NIS83-MX-4-M  
C10387\_NIS83-MX-4-W



**EMY**  
D= 50 MM (6UP)  
PMMA

**NICHIA 6Nx83 / 3Nx83**  
C10535\_NIS83-MX-6-S

**CREE MX6 / MX3**  
C10535\_NIS83-MX-6-S



**SANDRA**  
D= 70 MM (12UP)  
PMMA

**CREE XP-E / XP-G**  
C11814\_SANDRA-12-M  
C11700\_SANDRA-12-W

**OSRAM OSOLON**  
C11814\_SANDRA-12-M  
C11700\_SANDRA-12-W

**NICHIA NCS19 / NVS19**  
C11814\_SANDRA-12-M  
C11700\_SANDRA-12-W

**PHILIPS LUMILEDS  
LUXEON REBEL / REBEL ES**  
C11814\_SANDRA-12-M  
C11700\_SANDRA-12-W

**SEOUL Z5**  
C11814\_SANDRA-12-M  
C11700\_SANDRA-12-W

**SHARP DOUBLE DOME**  
C11814\_SANDRA-12-M  
C11700\_SANDRA-12-W



**ANGIE**  
D= 34 MM (4UP)  
PMMA

**CREE XP-E / XP-G**  
C12285\_ANGIE-S  
C12286\_ANGIE-M  
C12287\_ANGIE-M2  
C12288\_ANGIE-W

**OSRAM OSOLON**  
C12285\_ANGIE-S  
C12286\_ANGIE-M  
C12287\_ANGIE-M2  
C12288\_ANGIE-W

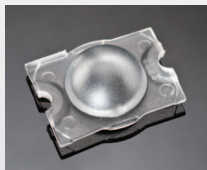
**PHILIPS LUMILEDS LUXEON  
REBEL / REBEL ES**  
C12285\_ANGIE-S  
C12286\_ANGIE-M  
C12287\_ANGIE-M2  
C12288\_ANGIE-W

**NICHIA NCS19 / NVS19**  
C12285\_ANGIE-S  
C12286\_ANGIE-M  
C12287\_ANGIE-M2  
C12288\_ANGIE-W

**SEOUL Z5**  
C12285\_ANGIE-S  
C12286\_ANGIE-M  
C12287\_ANGIE-M2  
C12288\_ANGIE-W

**SHARP DOUBLE DOME**  
C12285\_ANGIE-S  
C12286\_ANGIE-M  
C12287\_ANGIE-M2  
C12288\_ANGIE-W

# STREET LIGHTING



**STRADA-C/C2**  
15.5 MM X 19.6MM  
PMMA

**CREE XP-E / XP-G**

C11252\_STRADA-C2  
CA11253\_STRADA-C2

**PHILIPS LUMILEDS  
LUXEON REBEL / REBEL ES**

C11252\_STRADA-C2  
CA11253\_STRADA-C2

**NICHIA NCS19 / NVS19**

C11252\_STRADA-C2  
CA11253\_STRADA-C2

**OSRAM OSOLON**

C11252\_STRADA-C2  
CA11253\_STRADA-C2

**SHARP DOUBLE DOME**

C11252\_STRADA-C2  
CA11253\_STRADA-C2

**SEOUL Z5**

C11252\_STRADA-C2  
CA11253\_STRADA-C2

**NICHIA 6Nx83 / 3Nx83**

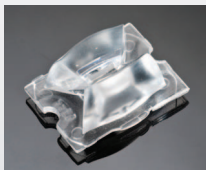
C11277\_STRADA-C  
CA11348\_STRADA-C

**CREE MX6 / MX3**

C11277\_STRADA-C  
CA11348\_STRADA-C

**OSRAM PLATINUM / DRAGON+**

C10915\_STRADA-C  
CA10916\_STRADA-C



**STRADA-DW**  
15.4 MM X 19.6 MM  
PMMA

**CREE XP-E / XP-G**

C11255\_STRADA-DW  
CA11256\_STRADA-DW

**PHILIPS LUMILEDS  
LUXEON REBEL / REBEL ES**

C11255\_STRADA-DW  
CA11256\_STRADA-DW

**NICHIA NCS19 / NVS19**

C11255\_STRADA-DW  
CA11256\_STRADA-DW

**OSRAM OSOLON**

C11255\_STRADA-DW  
CA11256\_STRADA-DW

**SHARP DOUBLE DOME**

C11255\_STRADA-DW  
CA11256\_STRADA-DW

**SEOUL Z5**

C11255\_STRADA-DW  
CA11256\_STRADA-DW

**NICHIA 6Nx83 / 3Nx83**

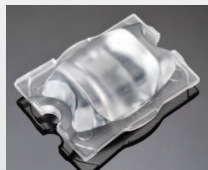
C11242\_STRADA-DW  
CA11243\_STRADA-DW

**CREE MX6 / MX3**

C11242\_STRADA-DW  
CA11243\_STRADA-DW

**OSRAM PLATINUM/DRAGON+**

C11132\_STRADA-DW  
CA11180\_STRADA-DW



**STRADA-B/B2**  
15.4 MM X 19.6 MM  
PMMA

**OSRAM OSOLON**

C10949\_STRADA-B2  
CA10950\_STRADA-B2

**OSRAM PLATINUM / DRAGON+**

C10908\_STRADA-B  
CA10914\_STRADA-B

**CREE XP-E / XP-G**

C10926\_STRADA-B  
CA10927\_STRADA-B

C10949\_STRADA-B2

CA10950\_STRADA-B2

**NICHIA NCS19 / NVS19**

C10949\_STRADA-B2  
CA10950\_STRADA-B2

**PHILIPS LUMILEDS  
LUXEON REBEL / REBEL ES**

C10949\_STRADA-B2  
CA10950\_STRADA-B2

**SHARP DOUBLE DOME**

C10949\_STRADA-B2  
CA10950\_STRADA-B2

**SEOUL Z5**

C10926\_STRADA-B  
CA10927\_STRADA-B

C10949\_STRADA-B2

CA10950\_STRADA-B2



**STRADA-DN**  
15.4 MM X 19.6 MM  
PMMA

**NICHIA 6Nx83 / 3Nx83**

C11244\_STRADA-DN  
CA11245\_STRADA-DN

**CREE MX6 / MX3**

C11244\_STRADA-DN  
CA11245\_STRADA-DN

# STREET LIGHTING



**STRADA-A**  
15.4 MM X 19.6 MM  
PMMA

**CREE XP-E / XP-G**  
C10818\_STRADA-A  
CA10823\_STRADA-A

C12219\_STRADA-A2  
C12220\_STRADA-A2

**SEOUL Z5**  
C10818\_STRADA-A  
CA10823\_STRADA-A

C12219\_STRADA-A2  
C12220\_STRADA-A2

**SHARP DOUBLE DOME**  
C12219\_STRADA-A2  
C12220\_STRADA-A2

**OSRAM PLATINUM/DAGON+**  
C10758\_STRADA-A  
CA10820\_STRADA-A



**STRADA 2X2**  
50 MM X 50 MM  
PMMA

**CREE XP-E / XP-G**  
C12361\_HB-2X2

**CREE XT-E**  
C12361\_HB-2X2

**PHILIPS LUMILEDS  
LUXEON REBEL / REBEL ES**  
C12361\_HB-2X2

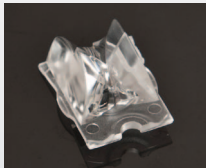
**OSRAM OSOLON**  
C12361\_HB-2X2

**NICHIA NCS19 / NVS19**  
C12361\_HB-2X2

**SEOUL Z5**  
C12361\_HB-2X2

**SHARP DOUBLE DOME**  
C12361\_HB-2X2

**CREE XM-L**  
C12361\_HB-2X2  
24



**STRADA-T-DW**  
15.5 MM X 19.6 MM  
PMMA

**CREE XP-E / XP-G**  
C11425\_STRADA-T-DW  
CA11426\_STRADA-T-DW

**CREE XB-D**  
C11425\_STRADA-T-DW  
CA11426\_STRADA-T-DW

**PHILIPS LUMILEDS  
LUXEON REBEL / REBEL ES**  
C11425\_STRADA-T-DW  
CA11426\_STRADA-T-DW

**OSRAM OSOLON**  
C11425\_STRADA-T-DW  
CA11426\_STRADA-T-DW

**NICHIA NCS19 / NVS19**  
C11425\_STRADA-T-DW  
CA11426\_STRADA-T-DW

**SHARP DOUBLE DOME**  
C11425\_STRADA-T-DW  
CA11426\_STRADA-T-DW

**SEOUL Z5**  
C11425\_STRADA-T-DW  
CA11426\_STRADA-T-DW



**STRADA-T-DW**  
15.5MM X 19.6 MM  
PMMA

**NICHIA 6Nx83 / 3Nx83**  
C12331\_STRADA-T-DW  
CA12333\_STRADA-T-DW

**CREE MX6 / MX3**  
C12331\_STRADA-T-DW  
CA12333\_STRADA-T-DW



**STRADA-FT**  
15.5 MM X 19.6 MM  
PMMA

**CREE XP-E / XP-G**  
C12049\_STRADA-FT  
CA12050\_STRADA-FT

**CREE XB-D**  
C12049\_STRADA-FT  
CA12050\_STRADA-FT

**PHILIPS LUMILEDS  
LUXEON REBEL / REBEL ES**  
C12049\_STRADA-FT  
CA12050\_STRADA-FT

**OSRAM OSOLON**  
C12049\_STRADA-FT  
CA12050\_STRADA-FT

**NICHIA NCS19 / NVS19**  
C12049\_STRADA-FT  
CA12050\_STRADA-FT

**SEOUL Z5**  
C12049\_STRADA-FT  
CA12050\_STRADA-FT

**SHARP DOUBLE DOME**  
C12049\_STRADA-FT  
CA12050\_STRADA-FT



# STREET LIGHTING



**STRADA-T-DN**  
15.5 MM X 19.6 MM  
PMMA

**CREE XP-E / XP-G**  
C11415\_STRADA-T-DN  
CA11416\_STRADA-T-DN

**CREE XB-D**  
C11415\_STRADA-T-DN  
CA11416\_STRADA-T-DN

**PHILIPS LUMILEDS  
LUXEON REBEL / REBEL ES**  
C11415\_STRADA-T-DN  
CA11416\_STRADA-T-DN

**OSRAM OSOLON**  
C11415\_STRADA-T-DN  
CA11416\_STRADA-T-DN

**NICHIA NCS19 / NVS19**  
C11415\_STRADA-T-DN  
CA11416\_STRADA-T-DN

**SHARP DOUBLE DOME**  
C11415\_STRADA-T-DN  
CA11416\_STRADA-T-DN

**SEOUL Z5**  
C11415\_STRADA-T-DN  
CA11416\_STRADA-T-DN

**NICHIA 6Nx83 / 3Nx83**  
C12329\_STRADA-T-DN  
CA12332\_STRADA-T-DN

**CREE MX6 / MX3**  
C12329\_STRADA-T-DN  
CA12332\_STRADA-T-DN



**STRADA-FW**  
15.5 MM X 19.6 MM  
PMMA

**CREE XP-E / XP-G**  
C12086\_STRADA-FW  
CA12087\_STRADA-FW

**CREE XT-E**  
C12086\_STRADA-FW  
CA12087\_STRADA-FW

**PHILIPS LUMILEDS  
LUXEON REBEL / REBEL ES**  
C12086\_STRADA-FW  
CA12087\_STRADA-FW

**OSRAM OSOLON**  
C12086\_STRADA-FW  
CA12087\_STRADA-FW

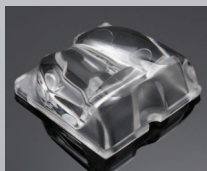
**NICHIA NCS19 / NVS19**  
C12086\_STRADA-FW  
CA12087\_STRADA-FW

**SEOUL Z5**  
C12086\_STRADA-FW  
CA12087\_STRADA-FW

**SHARP DOUBLE DOME**  
C12086\_STRADA-FW  
CA12087\_STRADA-FW

**NICHIA 6Nx83 / 3Nx83**  
C12226\_STRADA-FW  
CA12238\_STRADA-FW

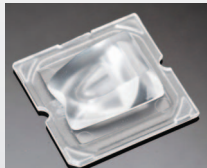
**CREE MX6 / MX3**  
C12226\_STRADA-FW  
CA12238\_STRADA-FW



**STRADA-SQ-A-T**  
25 MM X 25 MM  
PMMA

**CREE XM-L**  
C12410\_STRADA-SQ-A-T  
CA12411\_STRADA-SQ-A-T

**PHILIPS LUMILEDS  
LUXEON M**  
C12410\_STRADA-SQ-A-T  
CA12411\_STRADA-SQ-A-T



**STRADA-SQ-T-DN**  
25 MM X 25 MM  
PMMA

**CREE XP-E / XP-G**  
C11816\_STRADA-SQ-T-DN  
CA11817\_STRADA-SQ-T-DN

**CREE XT-E**  
C11889\_STRADA-SQ-T-DN  
CA11890\_STRADA-SQ-T-DN

**CREE XM-L**  
C11889\_STRADA-SQ-T-DN  
CA11890\_STRADA-SQ-T-DN

**SEOUL Z5**  
C11816\_STRADA-SQ-T-DN  
CA11817\_STRADA-SQ-T-DN

**SHARP DOUBLE DOME**  
C11816\_STRADA-SQ-T-DN  
CA11817\_STRADA-SQ-T-DN



**STRADA-SQ-T-DW**  
25 MM X 25 MM  
PMMA

**CREE XP-E / XP-G**  
C11818\_STRADA-SQ-T-DW  
CA11819\_STRADA-SQ-T-DW

**CREE XT-E**  
C11891\_STRADA-SQ-T-DW  
CA11892\_STRADA-SQ-T-DW  
C11962\_STRADA-SQ-T-DW  
CA11963\_STRADA-SQ-T-DW

**CREE XM-L**  
C11891\_STRADA-SQ-T-DW  
CA11892\_STRADA-SQ-T-DW  
C11962\_STRADA-SQ-T-DW  
CA11963\_STRADA-SQ-T-DW

**SEOUL Z5**  
C11818\_STRADA-SQ-T-DW  
CA11819\_STRADA-SQ-T-DW

**SHARP DOUBLE DOME**  
C11818\_STRADA-SQ-T-DW  
CA11819\_STRADA-SQ-T-DW

## STREET LIGHTING



**HB-5X1**  
123 MM X 25 MM  
PMMA

**CREE XP-E / XP-G**  
C12345\_HB-5X1

**CREE XT-E**  
C12345\_HB-5X1

**CREE XM-L**  
C12345\_HB-5X1

**PHILIPS LUMILEDS  
LUXEON REBEL / REBEL ES**  
C12345\_HB-5X1

**OSLON OSLON**  
C12345\_HB-5X1

**NICHIA NCS19 / NVS19**  
C12345\_HB-5X1

**SEOUL Z5**  
C12345\_HB-5X1

**SHARP DOUBLE DOME**  
C12345\_HB-5X1



**STRADA-T-6X1**  
25.2 MM X 120 MM  
PMMA

**CREE XP-E / XP-G**  
C11918\_STRADA-T-6X1-DNW  
C12449\_STRADA-T-6X1-DWC

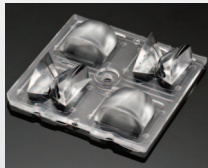
**CREE XB-D**  
C11918\_STRADA-T-6X1-DNW  
C12449\_STRADA-T-6X1-DWC

**PHILIPS LUMILEDS  
LUXEON REBEL / REBEL ES**  
C11918\_STRADA-T-6X1-DNW  
C12449\_STRADA-T-6X1-DWC

**NICHIA NCS19 / NVS19**  
C11918\_STRADA-T-6X1-DNW  
C12449\_STRADA-T-6X1-DWC

**SEOUL Z5**  
C11918\_STRADA-T-6X1-DNW  
C12449\_STRADA-T-6X1-DWC

**SHARP DOUBLE DOME**  
C11918\_STRADA-T-6X1-DNW  
C12449\_STRADA-T-6X1-DWC



**STRADA 2X2-DNW**  
50 MM X 50 MM  
PMMA

**CREE XT-E**  
C12360\_2X2-DNW

**CREE XM-L**  
C12360\_2X2-DNW



**STRADA 2X2-DWC**  
50 MM X 50 MM  
PMMA

**CREE XT-E**  
C12362\_STRADA\_2X2-DWC

**CREE XM-L**  
C12362\_STRADA\_2X2-DWC



**STRADA 2X2-A-T**  
50 MM X 50 MM  
PMMA

**CREE XT-E**  
C12419\_STRADA-2x2\_A-T

**CREE XM-L**  
C12419\_STRADA-2x2\_A-T

Learn more about STRADA optics at

[http://www.ledil.com/sites/default/files/Documents/Application%20notes/Strada\\_lens\\_guide.pdf](http://www.ledil.com/sites/default/files/Documents/Application%20notes/Strada_lens_guide.pdf)



#### BEAM ANGLE RANGE (FWHM)

Spot (RS, SS, S)	3-18 degrees
Medium (D, M, M2)	19 - 35 degrees
Wide (W, W2)	36 - 45 degrees
Extra Wide (WW)	46 - 63 degrees
WWW	64 -> degrees
O	Oval
REC	Rectangular

#### PREFIXES

F = FI / optic or holder

FA = FI / assembled optic+holder / tape

FN = FI / unassembled optic+holder / no tape

FX = FI / unassembled optic+holder / tape

FP = FI / assembled optic+holder/no tape

FCA = FI / assembled optic+holder / tape

FCN = FI / unassembled optic+holder / no tape

FCX = FI / unassembled optic+holder / tape

FI = Finland, Country of Origin

C = CN / optic or holder

CA = CN / assembled optic+holder / tape

CN = CN / unassembled optic+holder / no tape

CX = CN / unassembled optic+holder / tape

CP = CN / assembled optic+holder / no tape

CN = China, Country of Origin

Qualification of LEDs with our optics occurs every day, please visit [www.ledil.com](http://www.ledil.com) for the latest information. Contact [sales@ledil.com](mailto:sales@ledil.com) if you do not see an optic qualified for your LED of choice.

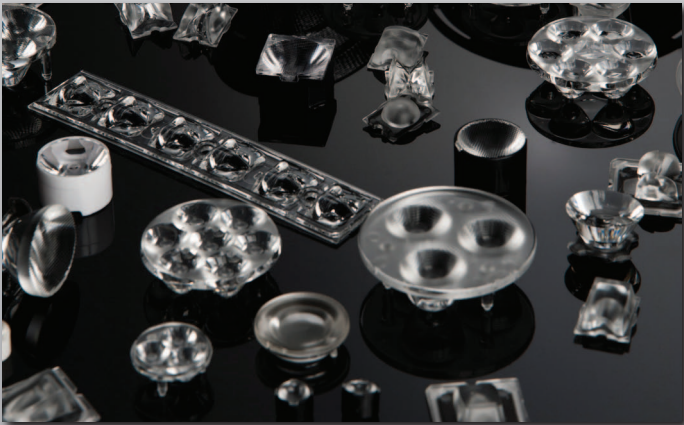
#### CREE XR

SEOUL P4 - ACHRICHE AX3221

PHILIPS LUMILEDS LUXEON I - III - K2

NICHIA 153 - 036 - 107

OSRAM DIAMOND DRAGON - OSTAR LIGHTING - IR OSTAR - OSTAR SMT

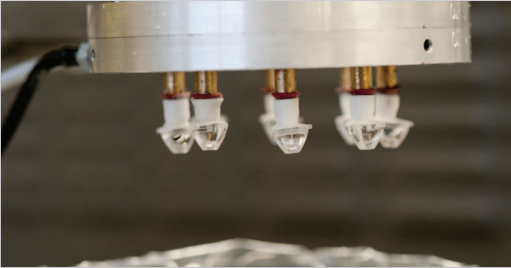




## Our Company

The only true specialist in the field of secondary optics for high-power and lighting-class LEDs, LEDiL has been producing precision-engineered optics and reflectors since 2002 and now boasts nearly 1000 standard products optimized for use with LEDs produced by the world's prominent LED manufacturers.

Custom solutions are also commonly developed with minimal end-user tooling investment required. With production in Finland and China and a global network of authorized distributors, LEDiL's products are market-competitive and readily available.



## Quality

Innovative and skillful designers engineer quality into every LEDiL optic. All our lenses are produced by a unique injection molding process, which ensures high optical quality, performance, lifetime and functionality. Our optics can work in extreme conditions.

