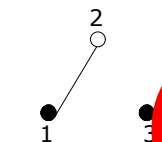


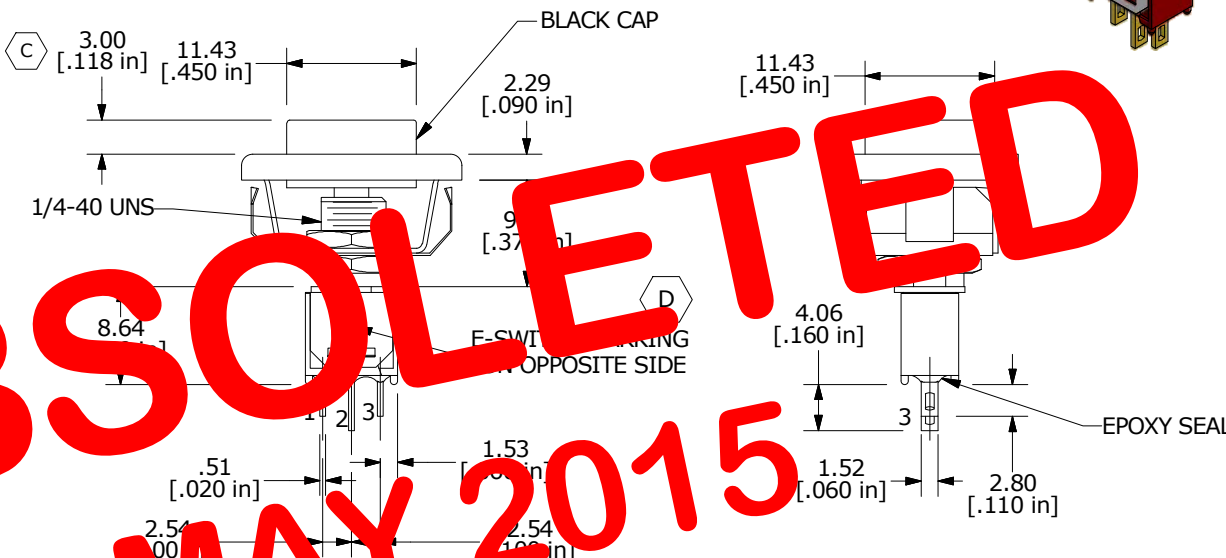
PANEL MOUNTING

SWITCH FUNCTION	
POS. 1	POS. 2
ON	(ON)
2-1	2-3

(ON)=MOMENTARY

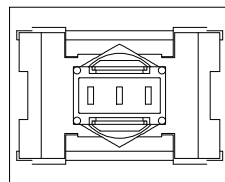


CIRCUIT: SPD



OBSOLETE  
MAY 2015

- NOTE:
1. ALL DIMENSIONS IN MM [INCH]
  2. GENERAL TOLERANCE: X.X=±0.4  
X.XX=±0.25
  3. TERMINAL NUMBERS FOR REF ONLY
  4. CONTACT MATERIAL: COPPER ALLOY W/ GOLD PLATE OVER NICKEL PLATE
  5. RATING: 0.4VA @ 20V AC OR DC MAX.
  6. MECHANICAL LIFE: 50,000 MAKE-AND-BREAK CYCLES
  7. CONTACT RESISTANCE: 20 mΩ MAX. INITIAL @ 2-4VDC 100mA FOR BOTH GOLD AND SILVER CONTACTS
  8. INSULATION RESISTANCE: 1,000 MEGA-OHM MIN.
  9. ELECTRIC STRENGTH: 1,000 V RMS @SEA LEVEL.
  10. OPERATING TEMP.: -30°C to 85°C
  11. ▲ DENOTES CRITICAL PARAMETER.
  12. 2002/95/EC (ROHS) COMPLIANT



D	21004	ADD MARKING NOTE	2/5/13	EBP
C	20050	CORRECT ACTUATOR HEIGHT	07/06/11	BMA
B	20037	UPDATE DRAWING	06/29/11	BMA
A	15365	RELEASED FOR PRODUCTION	10/11/05	PH
REV	PCR NO	DESCRIPTION	DATE	BY



TITLE 800SP8M1REOP1BLKBLK

SCALE	1.5:1	DATE	10/11/2005	DR	PH	DWG	T822040	REV	D
-------	-------	------	------------	----	----	-----	---------	-----	---

THE INFORMATION CONTAINED IN THIS DOCUMENT IS PROPRIETARY TO E-SWITCH AND IS NOT TO BE COPIED OR TRANSFERRED