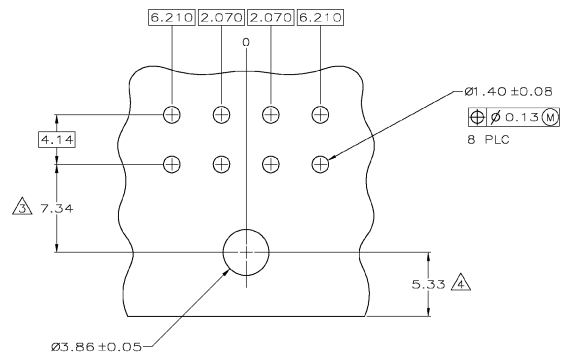
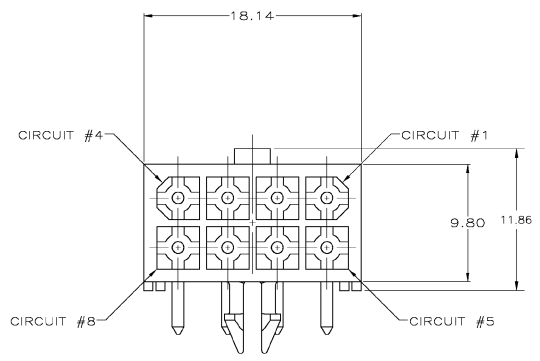
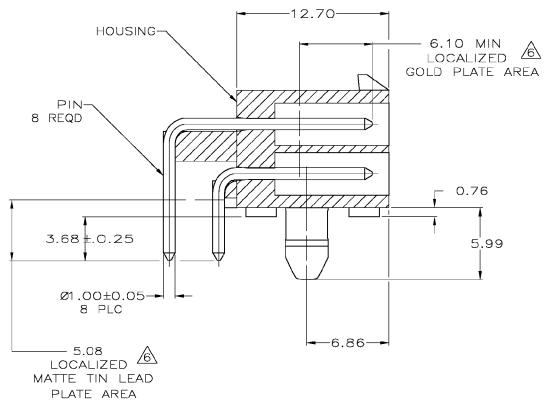


REV	DATE	DESCRIPTION	BY	CHK	APP
CM 00					
F		REV PER EC 0028-0388-03	24JUL03	SC	CJ



RECOMMENDED MOUNTING HOLE PATTERN FOR 1.57 THICK P.C. BOARD

MM	IN	MM	IN
3.68	.145	-	-
2.070	.0815	18.14	.714
1.57	.062	12.70	.500
1.40	.055	9.80	.386
1.00	.039	7.34	.289
0.76	.030	6.86	.270
0.25	.010	6.210	.2445
0.13	.005	6.10	.240
0.08	.003	5.99	.236
0.05	.002	5.33	.210
0.0038	0.000150	5.08	.200
0.00127	0.000050	4.14	.163
0.00076	0.000030	3.86	.152

CONVERSION TABLE

- PINS TO COMPLY WITH AMP SOLDERABILITY SPEC 109-11-3.
 - MATES WITH PLUG P/N 770579-1.
- △ COORDINATE DIMENSION APPLIES FROM CENTER OF ACTUAL FEATURE.
 - △ RECOMMENDED FOR EDGE MOUNTING.
 - △ 0.00381 MIN MATTE TIN LEAD OVER 0.00127 MIN NICKEL ENTIRE LENGTH OF PIN.
 - △ 0.00076 MIN GOLD PLATE IN THE LOCALIZED PLATE AREA, 0.00381 MIN MATTE TIN LEAD IN THE LOCALIZED PLATE AREA, BOTH OVER 0.00127 MIN NICKEL.
 - △ 0.00381 MIN MATTE TIN OVER 0.00127 MIN NICKEL ENTIRE LENGTH OF PIN.

MATERIAL	FINISH	MATERIAL	COLOR	PART NO.
BRASS	△	NYLON, UL94V-0	WHITE	1-770970-0
BRASS	△	NYLON, UL94V-0	WHITE	770970-2
BRASS	△	NYLON, UL94V-0	WHITE	770970-1

THIS DRAWING IS A CONTROLLED DOCUMENT. DATE: 24JUL2003

DESIGNED BY: S. CARPENTER DATE: 24JUL2003

DRAWN BY: J. JONES DATE: 24JUL2003

APPROVED BY: J. JONES DATE: 24JUL2003

DATE: 24JUL2003

SIZE: A1

DRAWING NO: 00779

SCALE: 5:1

SHEET: 1 OF 1

REV: F

CUSTOMER DRAWING

DATE: 24JUL2003

BY: S. CARPENTER

CHK: J. JONES

APP: J. JONES

DESCRIPTION: HEADER ASSEMBLY, RIGHT ANGLE, WITH SHORT LEG, 8 CIRCUIT, MINI UNIVERSAL MATE-N-LOCK™

MATERIAL: BRASS

FINISH: △

PLATE: 0.00381 MIN MATTE TIN OVER 0.00127 MIN NICKEL ENTIRE LENGTH OF PIN

PLUG: P/N 770579-1

NYLON, UL94V-0

WHITE

1-770970-0

770970-2

770970-1

