

Feed-through terminal for direct mount, Screw connection, Mounting surface, Rated cross-section: 240 mm², Width: 36 mm, Colour: Blue

Business data

| | |
|--|--|
| Packaging unit | 5 |
| Quantity unit | PC |
| Weight per piece (not including packaging) | 352.4 g |
| Weight per piece (including packaging) | 373.6 g |
| Unit of weight | G |
| Customs number | 85369010 |
| Country of origin | CZ |
| Prio-Article | 1585.2 |
| Product description | Feed-through terminal for direct mount |

1585.5

RK 240-D BU

Technical data

Dimensions

| | |
|------------------|----------|
| Length | 109 mm |
| Width | 36 mm |
| Height TS 35/7.5 | 112.8 mm |

Ratings

| | |
|---|---------------------|
| Rated voltage | 1000 V |
| Rated current | 415 A |
| Rated cross-section | 240 mm ² |
| Rated impulse voltage | 8 kV |
| Overvoltage category | III |
| Contamination degree | 3 |
| Maximum power dissipation for nominal condition | 12.16 W |

Technical data

Connection data

| | |
|--|---------------------|
| Connection principle | Screw connection |
| Connection position | Lateral |
| Connections | 2 |
| Number of terminals per level | 2 |
| Number of levels | 1 |
| Wire cross-section single-core (rigid) / stranded, min. | 70 mm ² |
| Wire cross-section single core (rigid)/stranded, max. | 240 mm ² |
| Wire cross-section stranded, min. | 70 mm ² |
| Wire cross-section stranded, max. | 240 mm ² |
| Wire cross-section stranded with wire-end ferrules, min. | 70 mm ² |
| Wire cross-section stranded with wire-end ferrules, max. | 185 mm ² |
| Wire cross-section AWG, min. | 2/0 |
| Wire cross-section AWG, max. | 500 Kcmil |
| Stripping length | 38 mm |
| Screw head | Inner hex (Allen) |
| Screw threading | M 10 |
| Tightening torque, min. | 14 Nm |
| Tightening torque, max. | 20 Nm |

Materials

| | |
|---------------------------|---------------|
| Insulation housing | Polyamide 6.6 |
| Flammability class UL 94 | V-2 |
| Working temperature, min. | -40 °C |
| Working temperature, max. | 105 °C |

Further technical data

| | |
|--------------------------------|---------------|
| Mounting type | Mounting face |
| Gauge plug acc. to EN 60 947-1 | B16 |
| Banded wire up to | 20 x 12 mm |

Print

| | |
|--------|------|
| Colour | Blue |
|--------|------|

Data sheet

1585.5

RK 240-D BU



Technical data

Environmental Product Compliance

| | |
|--------------------------------|------------|
| REACH Conform | yes |
| REACH Reference date | 2021-07-08 |
| REACH Candidate Substance Note | No |
| RoHS Conform | yes |

1585.5

RK 240-D BU

Approvals

CSA approval

| | |
|----------------------------------|--------------|
| CSA File Number | 042110_0_000 |
| CSA approval | C22.2 No 158 |
| CSA approval granted | yes |
| CSA Usegroup C: rated voltage | 600 V |
| CSA Usegroup C: rated current | 370 A |
| CSA wire cross-section AWG, min. | 2/0 |
| CSA wire cross-section AWG, max. | 500 Kcmil |
| CSA stripping length | 38 mm |

CSAus approval

| | |
|------------------------------------|--------------|
| CSAus File Number | 042110_0_000 |
| CSAus approval | UL 1059 |
| CSAus approval granted | yes |
| CSAus Usegroup C: rated voltage | 600 V |
| CSAus Usegroup C: rated current | 370 A |
| CSAus wire cross-section AWG, min. | 2/0 |
| CSAus wire cross-section AWG, max. | 500 Kcmil |
| CSAus stripping length | 38 mm |

Approvals

UL Recognized

| | |
|---|-----------|
| UL File Number | E95701 |
| UL approval | UL 1059 |
| UL Usegroup B: rated voltage | 600 V |
| UL Usegroup B: rated current | 370 A |
| UL Usegroup C: rated voltage | 600 V |
| UL Usegroup C: rated current | 370 A |
| UL wire cross-section single-core (rigid) AWG, min. | 2/0 |
| UL wire cross-section single-core (rigid) AWG, max. | 500 Kcmil |
| UL wire cross-section stranded AWG, min. | 2/0 |
| UL wire cross-section stranded AWG, max. | 500 Kcmil |
| UL torque | 142 Lb In |
| UL wire material | Cu |
| UL factory wiring | yes |
| UL Recognized | yes |

Standards and regulations

| | |
|----------------------|----------------|
| EAC approval | TR ZU 004/2011 |
| EAC approval granted | yes |

German Lloyd approval

| | |
|---------------------------|---------------------|
| GL approval | IEC 60947-7-1:2002 |
| GL approval granted | yes |
| GL rated voltage | 600 V |
| GL rated current | 370 A |
| GL rated cross-section | 240 mm ² |
| GL environmental category | C |

Approvals

KEMA KEUR approval

| | |
|---|---------------------|
| KEMA KEUR approval | EN 60947-7-1:2009 |
| KEMA KEUR approval granted | yes |
| KEMA rated voltage | 1000 V |
| KEMA rated current | 415 A |
| KEMA rated impulse voltage | 12 kV |
| KEMA wire cross-section single core (rigid), min. | 50 mm ² |
| KEMA wire cross-section single-core (rigid), max. | 240 mm ² |
| KEMA wire cross-section stranded, min. | 70 mm ² |
| KEMA wire cross-section stranded, max. | 240 mm ² |
| KEMA stripping length | 38 mm |
| KEMA torque, min. | 14 Nm |
| KEMA torque, max. | 20 Nm |

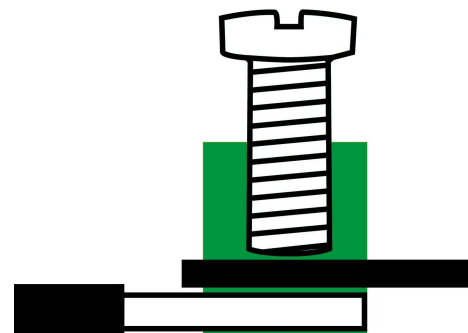
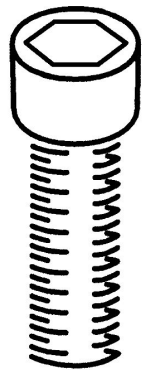
Media



EAC



M 10





1585.5

RK 240-D BU

Accessories

Cover

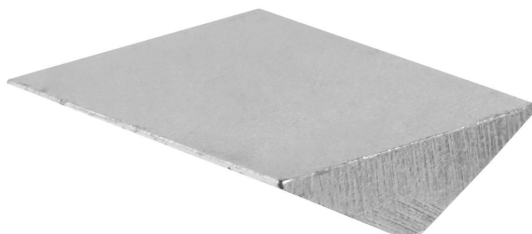


Cover, Length: 60 mm, Width: 25.5 mm,
Colour: Yellow

General order data

| Product number: | Article name | GTIN (EAN) | Packaging unit |
|-----------------|---------------|---------------|----------------|
| 2808.0 | AD 1/240/B YE | 4044211055370 | 500 ST |

Inlay profile



Inlay plate, Colour: natural

General order data

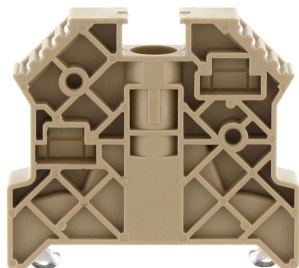
| Product number: | Article name | GTIN (EAN) | Packaging unit |
|-----------------|--------------|---------------|----------------|
| 2360.0 | EP 240 | 4044211051495 | 500 ST |

1585.5

RK 240-D BU

Accessories

End stop



End stop, Mounting type: Mounting rail TS 35/7.5, Width: 9.5 mm, Colour: Beige

General order data

| Product number: | Article name | GTIN (EAN) | Packaging unit |
|-----------------|---------------|---------------|----------------|
| 2828.0 | ES 35/K/ST BG | 4044211055547 | 500 ST |

Allen key socket wrench



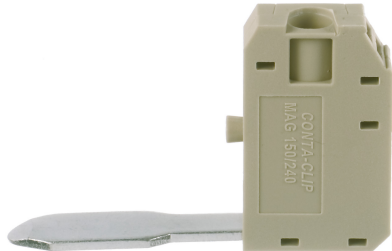
Inner hex key with bare blade

General order data

| Product number: | Article name | GTIN (EAN) | Packaging unit |
|-----------------|--------------|---------------|----------------|
| 2773.0 | ISKS 8 | 4044211055035 | 500 ST |

Accessories

Measurement pick-off terminal



Measurement pick-off terminal, Screw connection, Mounting type: On base, Rated cross-section: 10 mm², Width: 10 mm, Colour: Beige

General order data

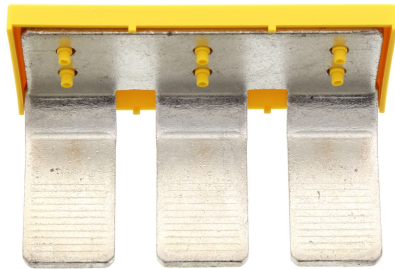
| Product number: | Article name | GTIN (EAN) | Packaging unit |
|-----------------|----------------|---------------|----------------|
| 1125.2 | MAG 150/240 BG | 4044211080921 | 500 ST |

1585.5

RK 240-D BU

Accessories

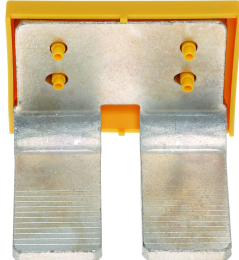
Insulated cross-connector



External insulated cross-connector, No. of poles: 3, Mounting type: Plug in, Width: 103.12 mm, Rated current: 380 A; Colour: Yellow

General order data

| Product number: | Article name | GTIN (EAN) | Packaging unit |
|-----------------|--------------|---------------|----------------|
| 2770.2 | AQI 3/240 YE | 4044211055004 | 500 ST |



External insulated cross-connector, No. of poles: 2, Mounting type: Plug in, Width: 66.28 mm, Rated current: 380 A; Colour: Yellow

General order data

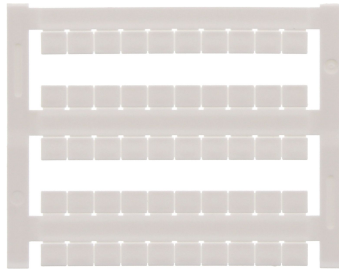
| Product number: | Article name | GTIN (EAN) | Packaging unit |
|-----------------|--------------|---------------|----------------|
| 2769.2 | AQI 2/240 YE | 4044211054991 | 500 ST |

1585.5

RK 240-D BU

Accessories

Quick marking



Terminal marker / Pocket Maxicard, Length: 5 mm, Width: 6 mm, Colour: White

General order data

| Product number: | Article name | GTIN (EAN) | Packaging unit |
|-----------------|----------------|---------------|----------------|
| 4702.7 | PMC SB 6/50 WH | 4044211089986 | 500 ST |
