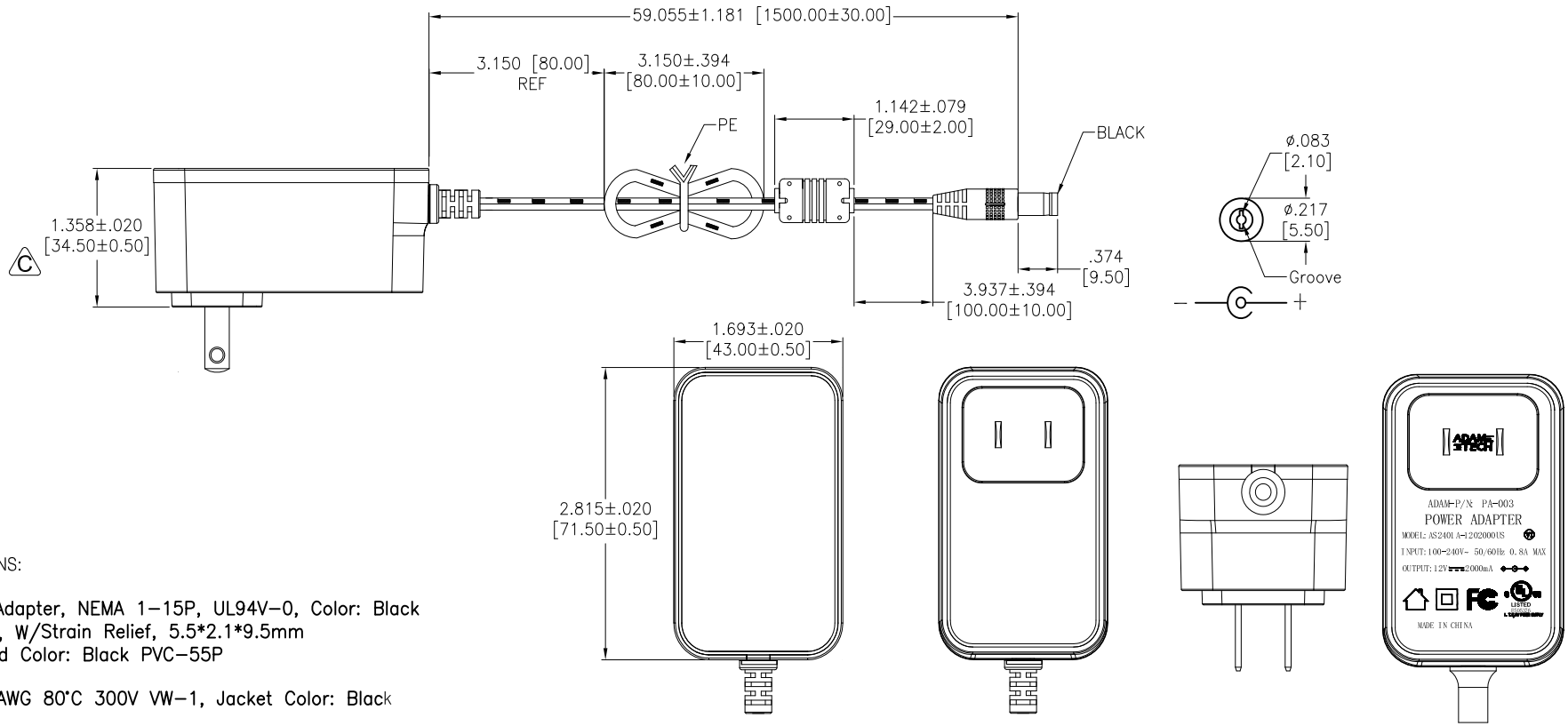


APPROVED: \_\_\_\_\_  
 DATE: \_\_\_\_\_ TITLE: \_\_\_\_\_

Rev	AWO #	Description	Date	Appr
-		RELEASED	3/18/21	
A		ADDED TOLERANCE	6/10/21	WX/AC
B		UPDATED DRAWING	8/26/22	JJ/NL
C		UPDATED DIM.	9/2/22	JJ/RC



**SPECIFICATIONS:**

Connector  
 P1: Power Adapter, NEMA 1-15P, UL94V-0, Color: Black  
 P2: DC Plug, W/Strain Relief, 5.5\*2.1\*9.5mm  
 Overmold Color: Black PVC-55P

CABLE:  
 UL2468: 20AWG 80°C 300V VW-1, Jacket Color: Black  
 Electrical:

Input:  
 Voltage: 100Vac to 240Vac  
 Current: 0.8A Max. @ 90-264 Vac input & max load  
 Frequency: 50Hz / 60Hz

Output:  
 Voltage: 12.0V  
 Current: 2A max.  
 Load Regulation: 11.4V~12.6V  
 Line Regulation: ±5%

Insulation Resistance: 10 Mohms min @ 500VDC  
 Dielectric withstanding voltage (Hi-pot): 3,000V AC For 1 Minute  
 Leakage Current: 0.25mA max. @ 230V AC/50Hz  
 Temperature Rating:  
 Operating Temperature: 0°C to +40°C  
 Storage Temperature: -40°C to +70°C

Environmental:  
 Lead free, RoHS compliant. **RoHS COMPLIANT**

UNLESS OTHERWISE SPECIFIED ALL DIMENSIONS ARE INCHES [MM]. TOLERANCES: EXCEPT AS NOTED

INCHES		HOLES	
.X	±.10	∅X	±.10
.XX	±.020	∅XX	±.015
.XXX	±.015	∅XXX	±.010

**ADAM TECH** 909 Rahway Avenue,  
 Union, NJ 07083  
 Phone: 908-687-5000  
 Fax: 908-687-5710

DRAWN	JJ	8/26/22
CHECKED	NL	8/26/22
APPROVED		

TITLE  
**POWER ADAPTER, NEMA 1-15P TO 2.1 X 5.5 X 9.5  
 DC PLUG, 12 VOLT, 2 AMP ,UL 2468 20 AWG**

THIS DRAWING CONTAINS INFORMATION THAT IS PROPRIETARY AND SHOULD NOT BE USED WITHOUT PRIOR WRITTEN PERMISSION FROM ADAM TECH

SIZE X	PART NO. PA-003	REV. C
REF: S00204C	SCALE: NTS	SHEET 1 OF 1