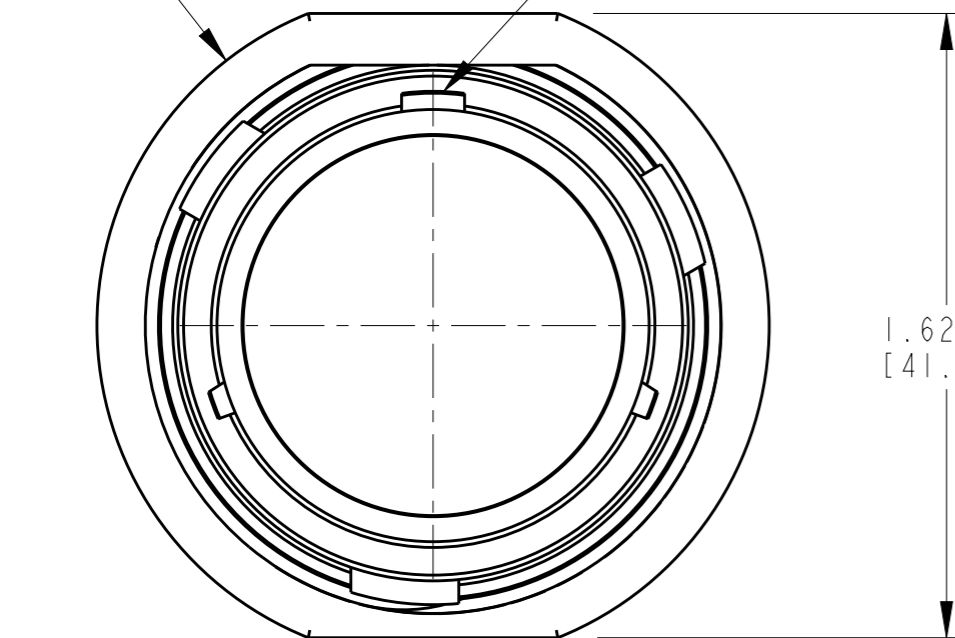


P	LTR	DESCRIPTION	DATE	DWN	APVD
A		REVISED PER E.O. P16875	29JUL2000	-	RDR
B		REVISED PER E.O. P17591	17SEP2002	-	RDR
C		REVISED PER E.O. P18449	04FEB2004	-	RDR
CI		REVISED PER PCN E-20-013840	18SEP2020	MK	IG

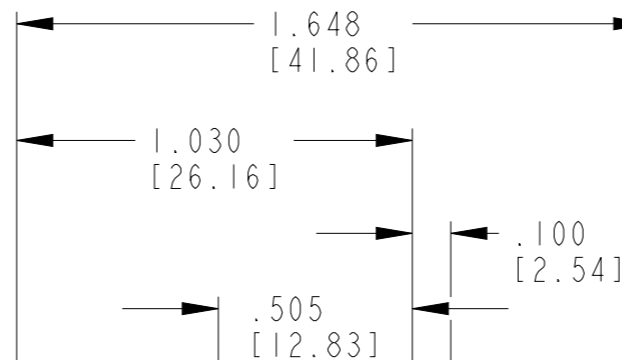
$\varnothing 1.750 \pm .025$   
[44.45 ± .63]

MAIN POLARIZING KEYWAY



1.625  
[41.28]

$\varnothing 1.329$   
[33.76]

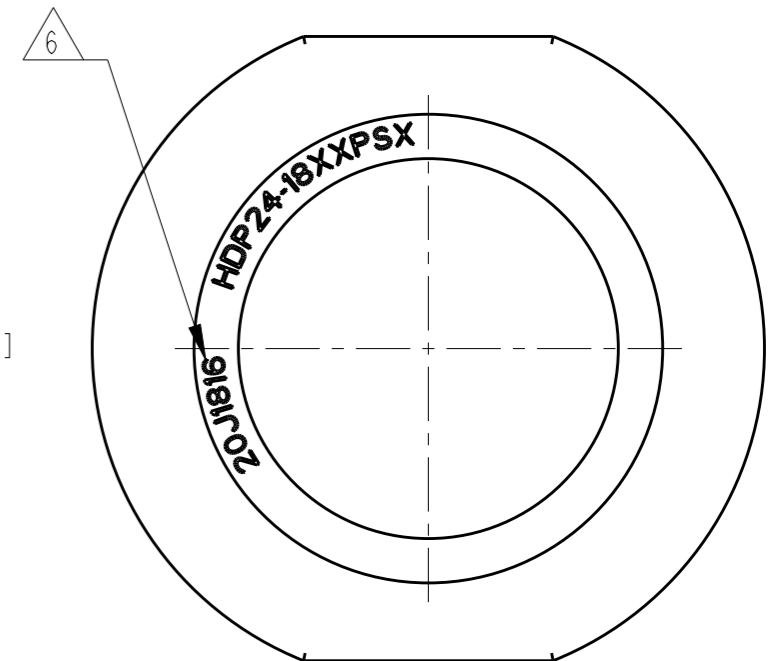


.505  
[12.83]

.100  
[2.54]

1.500 - 18 UNEF  
REF. THREAD

1.220  
[30.99]



6

HDP24-18XXPSX  
9181620

6 DATE CODE: IDENTIFIES THE YEAR, MONTH, DAY AND HOUR OF ASSEMBLY.  
YEAR: FIRST AND SECOND DIGITS. (14=2014)  
MONTH: THIRD DIGIT, EXCLUDING I.A=JAN., B=FEB., C=MARCH... (K=OCT.)  
DAY: FOURTH AND FIFTH DIGIT (14=14th DAY)  
HOUR: SIXTH AND SEVENTH DIGIT (11=11AM)

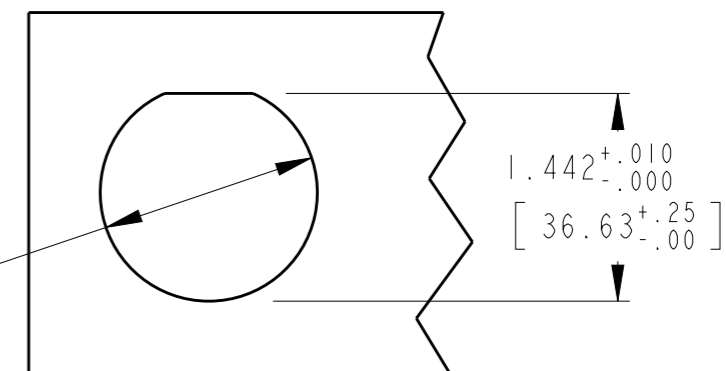
5. THIS PART MATES WITH HDP26-18-\*\*\*S/P\*-\*\*\*\* (\*\*\*\* = ALL MODIFICATIONS, \* = TYPE OF SEAL.)

4. FOR ARRANGEMENT OF CONTACT LOCATION SEE ENVELOPE DRAWING 0425-013-1800.

3. FOR CONTACTS, WIRES, CONNECTOR PERFORMANCE AND APPLICATION CHARACTERISTICS SEE ENVELOPE DRAWING 0425-015-0000 AND 0425-021-0000.

2. RECOMMENDED PANEL THICKNESS: .062[1.58] TO .187[4.76].

1. THIS RECEPTACLE TO BE USED WITH 114020-90 (ALUMINUM) OR 2411-002-1805 (PLASTIC) PANEL NUT AND 2414-002-1886 LOCK WASHER.



1.442<sup>+.010</sup><sub>-.000</sub>  
[36.63<sup>+.25</sup><sub>-.00</sub>]

$\varnothing 1.507 \pm .005$   
[38.28 ± .12]

RECOMMENDED MOUNTING HOLE

THIS DRAWING IS A CONTROLLED DOCUMENT.		DWN S. BEARD	12JAN2000		
DIMENSIONS: INCH [MM]		CHK J. LIM	04FEB2004		
TOLERANCES UNLESS OTHERWISE SPECIFIED:		APVD S. BEARD	16JAN2004	NAME RECEPTACLE CONNECTOR SHELL SIZE 18 BAYONET COUPLING HDP20 SERIES	
0 PLC ±-		PRODUCT SPEC		SIZE	
1 PLC ±-		108-151015		CAGE CODE	
2 PLC ±-		APPLICATION SPEC		DRAWING NO	
3 PLC ±.025		114-151015		RESTRICTED TO	
4 PLC ±-		WEIGHT		SCALE	
ANGLES ±-		20.4 g		SHEET	
MATERIAL		CUSTOMER DRAWING		OF	
FINISH		A3		REV	
		00779		C1	
		G=HDP24-18-XXPSX		2.000	