

# INFORMATION NOTE

N° 038/14

## PACKAGE MARKING STANDARDIZATION FOR PG-TSLP-2-1/7/17/19/20/21 & PG-TSLP-3-1/7/9/10 PACKAGE

**Subject of Change:** Change of marking position and size on device

**Products affected:** Refer to attachment 1\_cip03814

**Reason of Change:** Package Marking Standardization

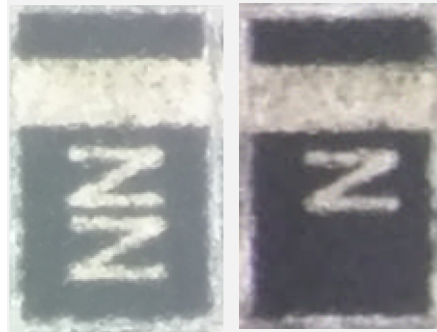
### Description of Change:

Cathode Marking

Character Marking

Picture Example

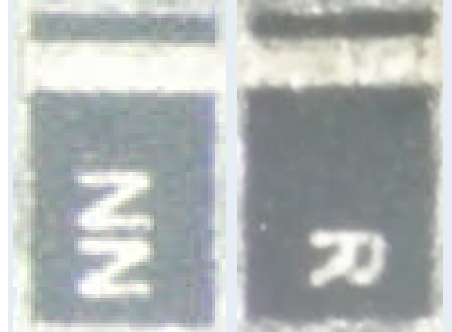
#### Old



#### New

Shift closer to the edge & size reduction

Shift closer to the edge & size reduction



### Assessment:

All products remain unchanged (i.e. no change in materials, manufacturing processes, production sites, test programs etc.).

### Time Schedule:

Beginning of July. From product datecode 1428 onwards

### Documentation:

1\_cip03814: List of affected products

If you have any questions, please do not hesitate to contact your local Sales office.

**INFORMATION NOTE N° 038/14**

PACKAGE MARKING STANDARDIZATION FOR PG-TSLP-2-1/7/17/19/20/21 & PG-TSLP-3-1/7/9/10 PACKAGE



<b>Type</b>	<b>SP N°</b>	<b>OPN</b>	<b>Package</b>
BAR 63-02L E6327	SP000013537	BAR6302LE6327XTMA1	PG-TSLP-2-1
BAR 64-02EL E6327	SP001114996	BAR6402ELE6327XTMA1	PG-TSLP-2-19
BAR 64-02LRH E6327	SP000051041	BAR6402LRHE6327XTSA1	PG-TSLP-2-7
BAR 86-02EL E6327	SP001192530	BAR8602ELE6327XTMA1	PG-TSLP-2-19
BAR 86-02LRH E6327	SP000653272	BAR8602LRHE6327XTSA1	PG-TSLP-2-17
BAR 88-02LRH E6327	SP000051042	BAR8802LRHE6327XTSA1	PG-TSLP-2-7
BAR 89-02LRH E6327	SP000051043	BAR8902LRHE6327XTSA1	PG-TSLP-2-7
BAR 89-02LRH E6816	SP000051044	BAR8902LRHE6816XTSA1	PG-TSLP-2-7
BAR 90-02EL E6327	SP001114994	BAR9002ELE6327XTMA1	PG-TSLP-2-19
BAR 90-02LRH E6327	SP000051045	BAR9002LRHE6327XTSA1	PG-TSLP-2-7
BAS 16-02L E6327	SP000013548	BAS1602LE6327XTMA1	PG-TSLP-2-1
BAS 3005S-02LRH E6327	SP000472478	BAS3005S02LRHE6327XTSA1	PG-TSLP-2-17
BAS 3010S-02LRH E6327	SP000472480	BAS3010S02LRHE6327XTSA1	PG-TSLP-2-17
BAS 40-02L E6327	SP000013549	BAS4002LE6327XTMA1	PG-TSLP-2-1
BAS 4002S-02LRH E6327	SP000472476	BAS4002S02LRHE6327XTSA1	PG-TSLP-2-17
BAS 70-02L E6327	SP000013550	BAS7002LE6327XTMA1	PG-TSLP-2-1
BAT 15-02EL E6327	SP001200976	BAT1502ELE6327XTMA1	PG-TSLP-2-19
BAT 15-02LRH E6327	SP000055124	BAT1502LRHE6327XTSA1	PG-TSLP-2-7
BAT 54-02LRH E6327	SP000234099	BAT5402LRHE6327XTSA1	PG-TSLP-2-7
BBY 52-02L E6327	SP000014591	BBY5202LE6327XTMA1	PG-TSLP-2-1
BBY 52-02L E6816	SP000621074	BBY5202LE6816XTMA1	PG-TSLP-2-1
BBY 53-02L E6327	SP000014592	BBY5302LE6327XTMA1	PG-TSLP-2-1
BC 847BL3 E6327	SP000013553	BC847BL3E6327XTMA1	PG-TSLP-3-1
BC 848BL3 E6327	SP000013554	BC848BL3E6327XTMA1	PG-TSLP-3-1
BC 857BL3 E6327	SP000013556	BC857BL3E6327XTMA1	PG-TSLP-3-1
BFR 193L3 E6327	SP000013557	BFR193L3E6327XTMA1	PG-TSLP-3-1
BFR 340L3 E6327	SP000013558	BFR340L3E6327XTMA1	PG-TSLP-3-1
BFR 360L3 E6765	SP000013561	BFR360L3E6765XTMA1	PG-TSLP-3-1
BFR 380L3 E6327	SP000013562	BFR380L3E6327XTMA1	PG-TSLP-3-1
BFR 460L3 E6327	SP000014238	BFR460L3E6327XTMA1	PG-TSLP-3-1
BFR 740EL3 E6327	SP001219736	BFR740EL3E6327XTSA1	PG-TSLP-3-10
BFR 740L3RH E6327	SP000252393	BFR740L3RHE6327XTSA1	PG-TSLP-3-9
BFR 740L3RH ETEST	SP001081054	BFR740L3RHETESTXTSA1	PG-TSLP-3-9
BFR 750EL3 E6327	SP001219730	BFR750EL3E6327XTSA1	PG-TSLP-3-10
BFR 750L3RH E6327	SP000252588	BFR750L3RHE6327XTSA1	PG-TSLP-3-9
BFR 840EL3 E6327	SP001219740	BFR840EL3E6327XTSA1	PG-TSLP-3-10
BFR 840L3RHESD E6327	SP000978848	BFR840L3RHESDE6327XTSA1	PG-TSLP-3-9
BFR 843EL3 E6327	SP001062610	BFR843EL3E6327XTSA1	PG-TSLP-3-10
ESD0P2RF-02LRH E6327	SP000516754	ESD0P2RF02LRHE6327XTSA1	PG-TSLP-2-17
ESD101-B1-02EL E6327	SP001112354	ESD101B102ELE6327XTMA1	PG-TSLP-2-20
ESD103-B1-02EL E6327	SP001112358	ESD103B102ELE6327XTMA1	PG-TSLP-2-20

ESD105-B1-02EL E6327	SP001165248	ESD105B102ELE6327XTMA1	PG-TSLP-2-20
ESD110-B1-02EL E6327	SP001201276	ESD110B102ELE6327XTMA1	PG-TSLP-2-20
ESD112-B1-02EL E6327	SP001113386	ESD112B102ELE6327XTMA1	PG-TSLP-2-20
ESD113-B1-02EL E6327	SP001201284	ESD113B102ELE6327XTMA1	PG-TSLP-2-20
ESD114-U1-02EL E6327	SP001213176	ESD114U102ELE6327XTMA1	PG-TSLP-2-19
ESD18VU1B-02LRH E6327	SP000884276	ESD18VU1B02LRHE6327XTSA1	PG-TSLP-2-17
ESD201-B2-03LRH E6327	SP000992744	ESD201B203LRHE6327XTSA1	PG-TSLP-3-9
ESD203-B1-02EL E6327	SP001112360	ESD203B102ELE6327XTMA1	PG-TSLP-2-20
ESD204-B1-02EL E6327	SP001113390	ESD204B102ELE6327XTMA1	PG-TSLP-2-19
ESD205-B1-02EL E6327	SP001183070	ESD205B102ELE6327XTMA1	PG-TSLP-2-19
ESD206-B1-02EL E6327	SP001123720	ESD206B102ELE6327XTMA1	PG-TSLP-2-19
ESD207-B1-02EL E6327	SP001112362	ESD207B102ELE6327XTMA1	PG-TSLP-2-19
ESD208-B1-02EL E6327	SP001139550	ESD208B102ELE6327XTMA1	PG-TSLP-2-19
ESD217-B1-02EL E6327	SP001229356	ESD217B102ELE6327XTMA1	PG-TSLP-2-19
ESD218-B1-02EL E6327	SP001201280	ESD218B102ELE6327XTMA1	PG-TSLP-2-20
ESD221-U1-02EL E6327	SP001201290	ESD221U102ELE6327XTMA1	PG-TSLP-2-19
ESD24VL1B-02LRH E6327	SP000960726	ESD24VL1B02LRHE6327XTSA1	PG-TSLP-2-17
ESD300-B1-02LRH E6327	SP001090470	ESD300B102LRHE6327XTSA1	PG-TSLP-2-21
ESD3V3S1B-02LRH E6327	SP000908072	ESD3V3S1B02LRHE6327XTSA1	PG-TSLP-2-17
ESD3V3U1U-02LRH E6327	SP000390728	ESD3V3U1U02LRHE6327XTSA1	PG-TSLP-2-7
ESD3V3XU1BL E6327	SP000943406	ESD3V3XU1BLE6327XTSA1	PG-TSLP-2-17
ESD5V3L1B-02LRH E6327	SP000921756	ESD5V3L1B02LRHE6327XTSA1	PG-TSLP-2-17
ESD5V3L1U-02LRH E6327	SP000781844	ESD5V3L1U02LRHE6327XTSA1	PG-TSLP-2-17
ESD5V3S1B-02LRH E6327	SP000558068	ESD5V3S1B02LRHE6327XTSA1	PG-TSLP-2-17
ESD5V3S1U-02LRH E6327	SP000643196	ESD5V3S1U02LRHE6327XTSA1	PG-TSLP-2-17
ESD5V3U1U-02LRH E6327	SP000394151	ESD5V3U1U02LRHE6327XTSA1	PG-TSLP-2-7
ESD5V3U2U-03LRH E6327	SP000427412	ESD5V3U2U03LRHE6327XTMA1	PG-TSLP-3-7
ESD5V5S1B-02LRH E6327	SP001024008	ESD5V5S1B02LRHE6327XTSA1	PG-TSLP-2-17
ESD8V0L1B-02LRH E6327	SP000235246	ESD8V0L1B02LRHE6327XTSA1	PG-TSLP-2-17
ESD8V0L1B-02LRH E6327	SP000235246	ESD8V0L1B02LRHE6327XTSA1	PG-TSLP-2-7
ESD8V0L1B-02LRH E6433	SP000257037	ESD8V0L1B02LRHE6433XTMA1	PG-TSLP-2-17
ESD8V0L1B-02LRH E6433	SP000257037	ESD8V0L1B02LRHE6433XTMA1	PG-TSLP-2-7
ESD8V0L2B-03L E6327	SP000055122	ESD8V0L2B03LE6327XTMA1	PG-TSLP-3-1
ESD8V0R1B-02LRH E6327	SP000368384	ESD8V0R1B02LRHE6327XTSA1	PG-TSLP-2-17
ESD8V0R1B-02LRH E6327	SP000368384	ESD8V0R1B02LRHE6327XTSA1	PG-TSLP-2-7