

ITEM	PART#	DESCRIPTION	QTY	UOM
A	39012066	6CKT NEW MINI FIT CRIMP PIN H 555906P210	1	PC
B	39000124	MiniFit Term Crp Male C Bs Tin 16awg	6	PC
C	--	PAPER PRINTED PAPER WHITE	1	PC

FROM	TO	DESCRIPTION	COLOR
A1	--	1X16AWG DISC PVC BK UL1015 HOOKUP	BLACK
A2	--	1X16AWG DISC PVC BK UL1015 HOOKUP	BLACK
A3	--	1X16AWG DISC PVC BK UL1015 HOOKUP	BLACK
A4	--	1X16AWG DISC PVC BK UL1015 HOOKUP	BLACK
A5	--	1X16AWG DISC PVC BK UL1015 HOOKUP	BLACK
A6	--	1X16AWG DISC PVC BK UL1015 HOOKUP	BLACK

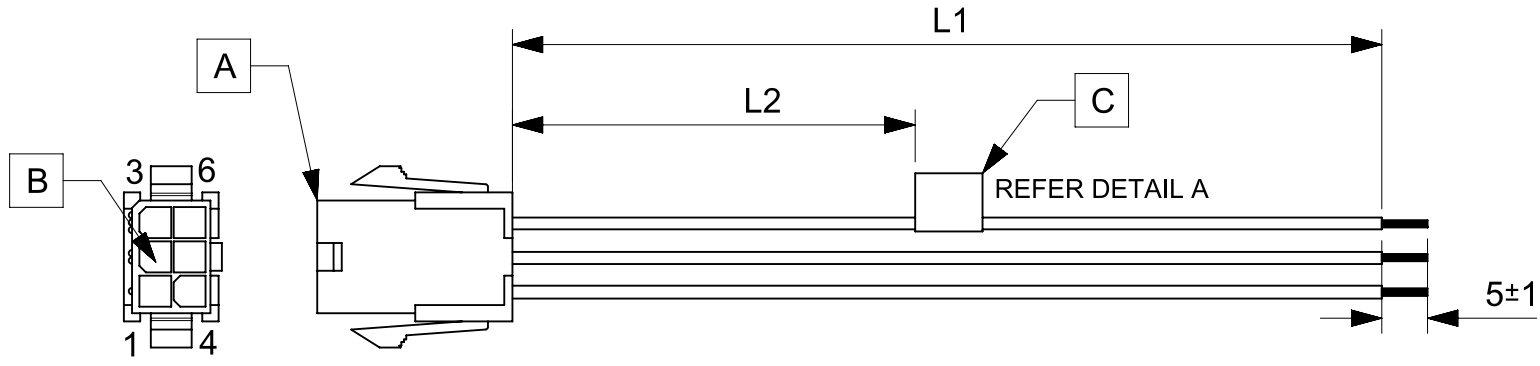


TABLE			
PART NUMBER	L1	L2	TITLE
2153281061	150±8	63 REF	MINIFIT JR DR P-S 6 CIRCUIT 150MM Sn
2153281062	300±10	138 REF	MINIFIT JR DR P-S 6 CIRCUIT 300MM Sn
2153281063	600±10	288 REF	MINIFIT JR DR P-S 6 CIRCUIT 600MM Sn

- NOTES**
1. Connector view shown is from mating side.
 2. Free ends must be stripped, twisted & tinned. The length of tinning is 5±1mm. Tinning dia must be 1.8mm Max.
 3. Label text must be 2mm max. in height with Arial font.
 4. Label must be wrapped in Flag type on a single cable.

MOLEX P/N
MOLEX
BATCH WK/YR
DETAIL A

REVISION			
DATE	REV	DESCRIPTION	CHANGER
2020/03/19	A	INITIAL RELEASE	ARAJU

FUNCTIONAL SYMBOLS $\frac{E}{A} = 0$ $\frac{E}{E} = 0$ $\frac{E}{P} = 0$ DIVISIONAL SYMBOLS	DIMENSION UNITS: mm SCALE: NTS		CURRENT REV DESC:		
	GENERAL TOLERANCES (UNLESS SPECIFIED)		EC NO: 638379		
	ANGULAR TOL ± °		DRWN: ARAJU 2020/03/19		
	4 PLACES ±		CHK'D: RDESAI01 2020/05/28		
3 PLACES ±		APPR: RDESAI01 2020/05/28		PRODUCT CUSTOMER DRAWING	
2 PLACES ±		INITIAL REVISION:		DOCUMENT NUMBER	DOC TYPE
1 PLACE ±		DRWN: ARAJU 2020/03/19		2153281061	PSD
0 PLACES ±		APPR: RDESAI01 2020/05/28		000	A
DRAFT WHERE APPLICABLE MUST REMAIN WITHIN DIMENSIONS		THIRD ANGLE PROJECTION	DRAWING	SERIES	MATERIAL NUMBER
			A4-SIZE	215328	SEE TABLE
					CUSTOMER
					GENERAL MARKET
					SHEET NUMBER
					1 OF 1