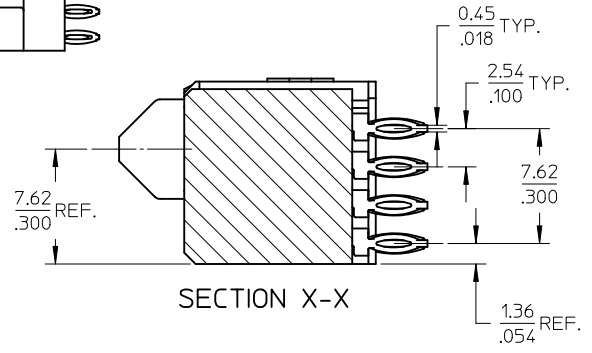
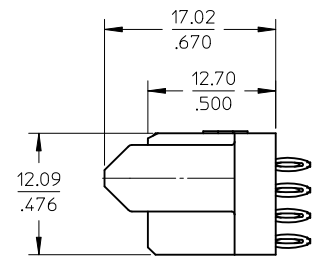
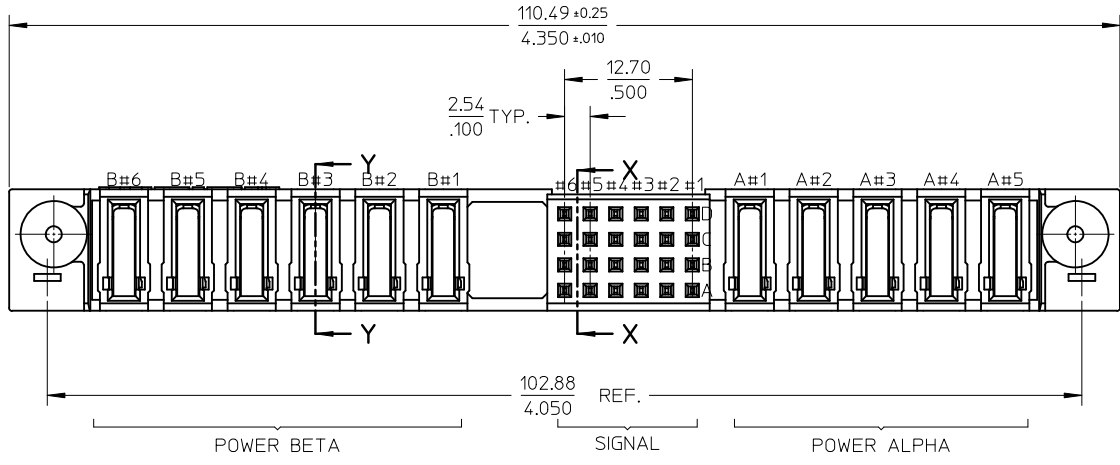
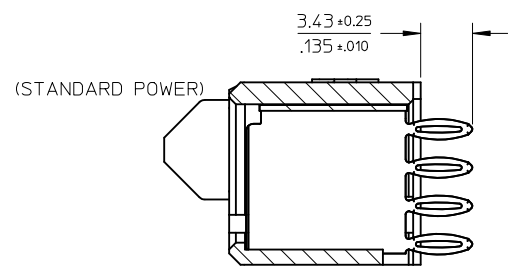


ISOMETRIC VIEW

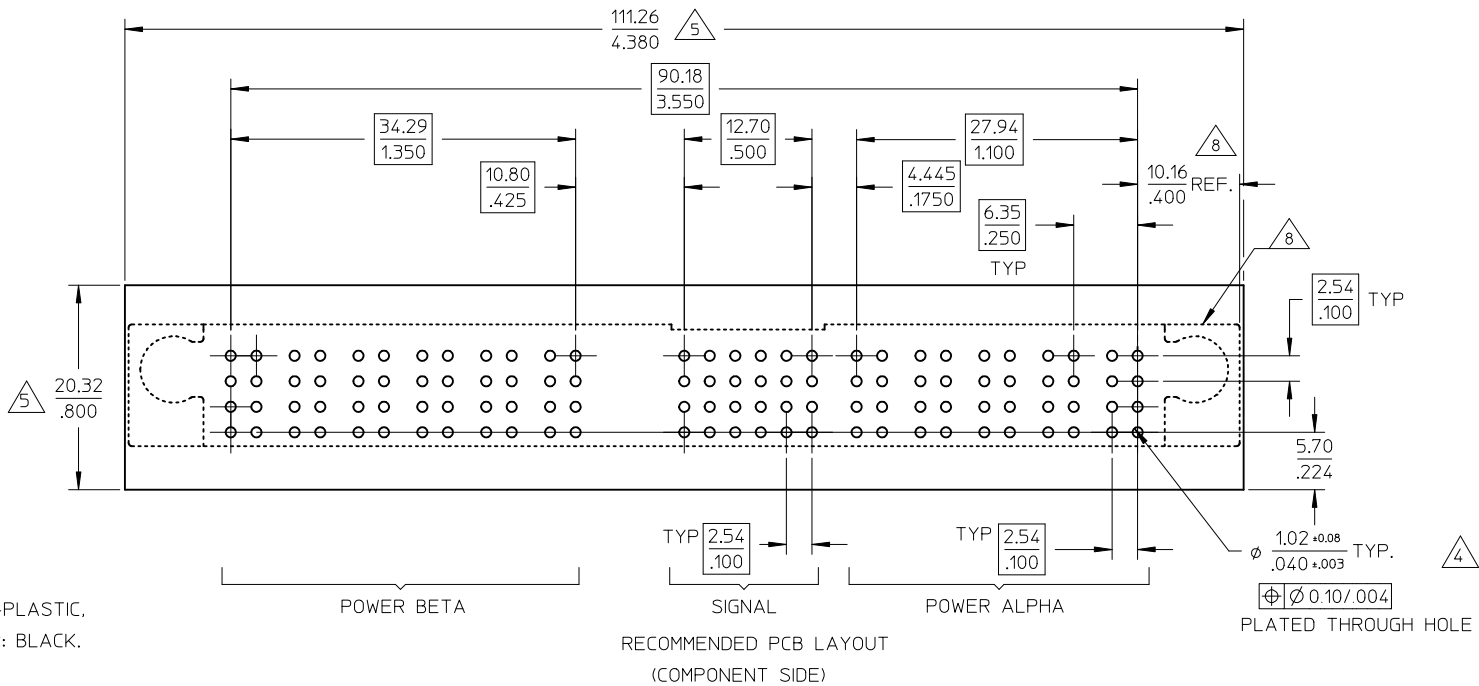


SECTION X-X



SECTION Y-Y

OBS TIN/LEAD P/N EC NO: S2011-0260 DRWN:SKANG 2010/10/05 CH'KD:ATSEE 2010/11/29 APPR:MLONG 2010/12/01	QUALITY SYMBOLS	GENERAL TOLERANCES (UNLESS SPECIFIED)		DIMENSION STYLE	SCALE	DESIGN UNITS	THIRD ANGLE PROJECTION	
	$F_A=0$ $F_B=0$ $F_C=0$	mm	INCH	MM/IN	NTS	METRIC		
		4 PLACES	± ---	± ---	DRAWN BY	DATE	TITLE	MPS CONNECTOR, RECT P(B)-S-P(A) CONFIG, VERTICAL PRESS-FIT
		3 PLACES	± ---	± ---	KMGOH	2002/10/04		
	2 PLACES	± 0.13	± ---	CHECKED BY	DATE	MOLEX MOLEX INCORPORATED	SD-87665-011	
	1 PLACE	± 0.25	± ---	PTLIM	2002/11/25			
		ANGULAR ± 3 °		APPROVED BY	DATE			
		DRAFT WHERE APPLICABLE MUST REMAIN WITHIN DIMENSIONS		SKTOH	2002/11/26			
				MATERIAL NO.		DOCUMENT NO.	SHEET NO.	
				87665-1001			1 OF 2	
				THIS DRAWING CONTAINS INFORMATION THAT IS PROPRIETARY TO MOLEX INCORPORATED AND SHOULD NOT BE USED WITHOUT WRITTEN PERMISSION				



CONNECTOR - NOTES

1. MATERIALS :

- HOUSING - HIGH TEMPERATURE THERMO-PLASTIC, GLASS FILLED, UL94-0,COLOR: BLACK.
- POWER PIN - COPPER ALLOY
- BOARD-LOCK - COPPER ALLOY

2. PLATING :

- POWER CONTACTS
- 0.76 MICROMETER MINIMUM GOLD (Au) AT CONTACT AREA AND 2.54 MICROMETER MINIMUM TIN AT SOLDER TAIL AREA OVER 1.27um MIN. NICKEL (Ni) UNDERPLATE.

3. PRODUCT SPECIFICATION: PS-87665-006.

4. PCB NOTE FOR DIAMETER 1.02/.040 PLATED HOLE.

- DRILLED HOLE SIZE IS 1.151/.0453
- PLATE WITH 0.007/.0003 MINIMUM TIN OVER 0.03/.001 TO 0.08/.003 COPPER PLATING TO ACHIEVE 1.02±0.08/.040±.003 HOLE. SEE SHEET 2 FOR RECOMMENDED PCB LAYOUT.

5. COMPONENT STAY AWAY ZONE FROM CONNECTOR.

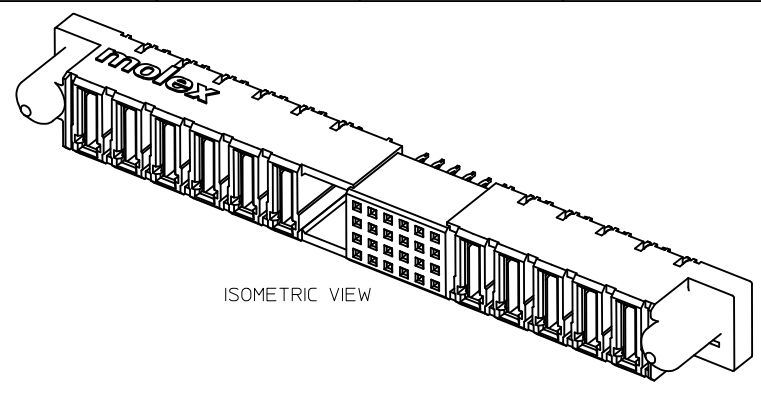
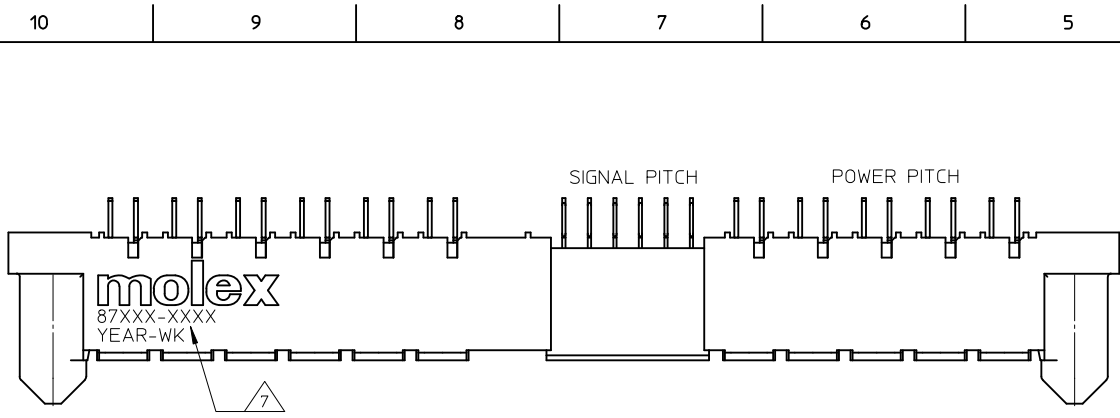
6. 6P(B)-24S-5P(A) CONFIGURATION IS SHOWN FOR ILLUSTRATION ONLY.

7. MANUFACTURER LOGO,PART NUMBER AND YEAR-WEEK CODE.

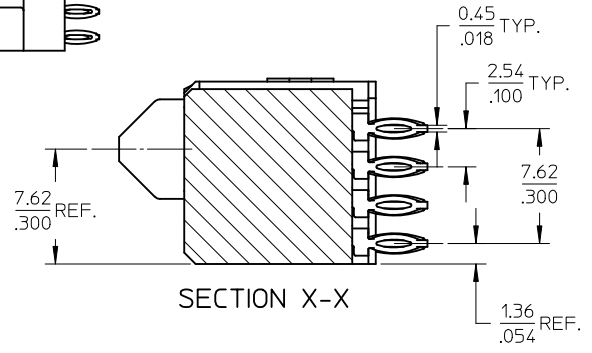
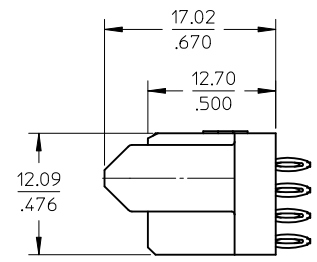
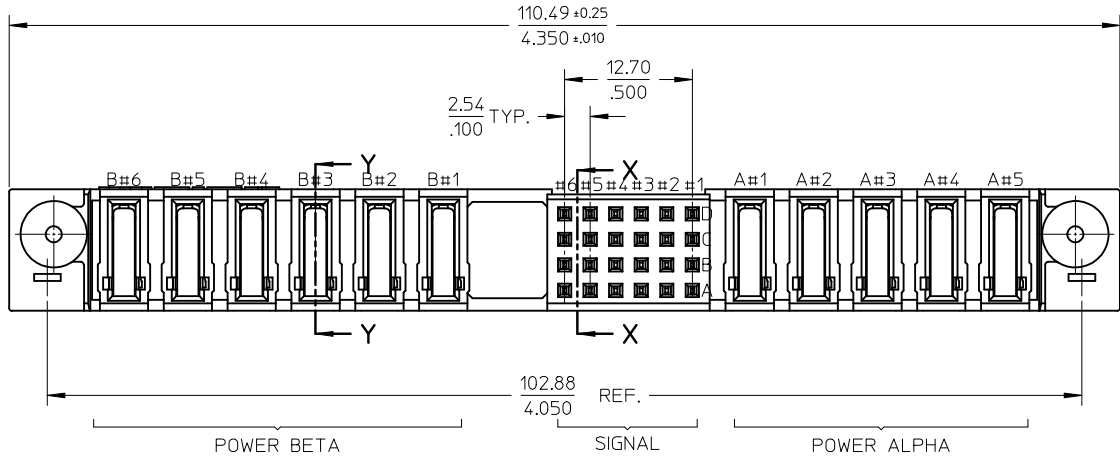
8. IMAGINARY LINE & DIMENSION TO POSITION AND PROVIDE CONNECTOR ORIENTATION W.R.T. TO PCB LAYOUT.

9. CONNECTORS ARE PACKED IN TRAY.

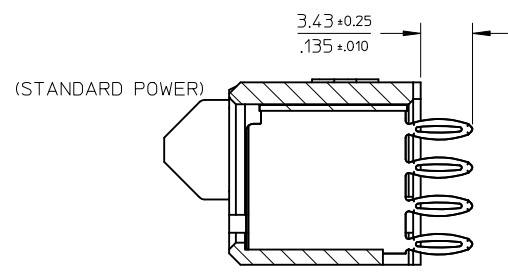
OBS TIN/LEAD P/N EC NO: S2011-0260 DRWN:SKANG 2010/10/05 CHKD:ATSEE 2010/11/29 APPR:MLONG 2010/12/01	DESCRIPTION REV	QUALITY SYMBOLS	GENERAL TOLERANCES (UNLESS SPECIFIED)		DIMENSION STYLE		SCALE	DESIGN UNITS	THIRD ANGLE PROJECTION		
		$\nabla F=0$	mm	INCH	MM/IN		NTS	METRIC			
		$\nabla F=0$	4 PLACES ± --- ± ---	3 PLACES ± --- ± ---	DRAWN BY	DATE	TITLE				
		$\nabla F=0$	2 PLACES ± 0.13 ± ---	1 PLACE ± 0.25 ± ---	CHECKED BY	DATE	MPS CONNECTOR, RECT P(B)-S-P(A) CONFIG, VERTICAL PRESS-FIT				
	ANGULAR ± 3 °		APPROVED BY	DATE	MOLEX INCORPORATED						
	DRAFT WHERE APPLICABLE MUST REMAIN WITHIN DIMENSIONS		MATERIAL NO.	DOCUMENT NO.						87665-1001	
			SIZE	THIS DRAWING CONTAINS INFORMATION THAT IS PROPRIETARY TO MOLEX INCORPORATED AND SHOULD NOT BE USED WITHOUT WRITTEN PERMISSION							



ISOMETRIC VIEW

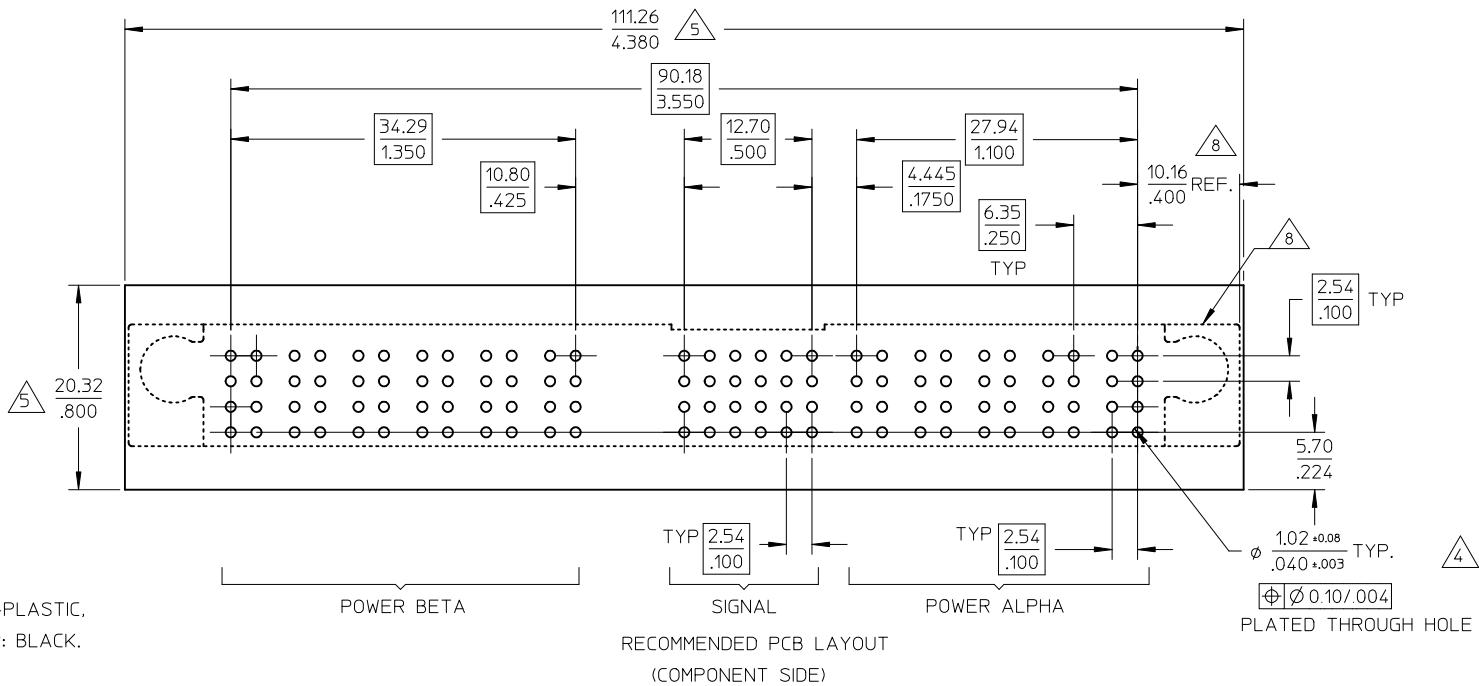


SECTION X-X



SECTION Y-Y

OBS TIN/LEAD P/N EC NO: S2011-0260 DRWN:SKANG 2010/10/05 CH'KD:ATSEE 2010/11/29 APPR:MLONG 2010/12/01	QUALITY SYMBOLS	GENERAL TOLERANCES (UNLESS SPECIFIED)		DIMENSION STYLE	SCALE	DESIGN UNITS	THIRD ANGLE PROJECTION
	$F_A=0$ $F_B=0$ $F_C=0$	4 PLACES ± --- ± --- 3 PLACES ± --- ± --- 2 PLACES ± 0.13 ± --- 1 PLACE ± 0.25 ± ---	MM/IN	NTS	METRIC		
	DRAFT WHERE APPLICABLE MUST REMAIN WITHIN DIMENSIONS	DRAWN BY: KMG0H CHECKED BY: PTLIM APPROVED BY: SKTOH MATERIAL NO.: 87665-1001	DATE: 2002/10/04 DATE: 2002/11/25 DATE: 2002/11/26	TITLE	MPS CONNECTOR, RECT P(B)-S-P(A) CONFIG. VERTICAL PRESS-FIT		
	MOLEX INCORPORATED DOCUMENT NO.: SD-87665-011	SHEET NO.: 1 OF 2					



CONNECTOR - NOTES

1. MATERIALS :

- HOUSING - HIGH TEMPERATURE THERMO-PLASTIC, GLASS FILLED, UL94-0,COLOR: BLACK.
- POWER PIN - COPPER ALLOY
- BOARD-LOCK - COPPER ALLOY

2. PLATING :

- POWER CONTACTS
- 0.76 MICROMETER MINIMUM GOLD (Au) AT CONTACT AREA AND 2.54 MICROMETER MINIMUM TIN AT SOLDER TAIL AREA
- OVER 1.27um MIN. NICKEL (Ni) UNDERPLATE.

3. PRODUCT SPECIFICATION: PS-87665-006.

4. PCB NOTE FOR DIAMETER 1.02/0.40 PLATED HOLE.

- DRILLED HOLE SIZE IS 1.151/.0453
- PLATE WITH 0.007/.0003 MINIMUM TIN OVER 0.03/.001 TO 0.08/.003 COPPER PLATING TO ACHIEVE 1.02±0.08/.040±.003 HOLE.
- SEE SHEET 2 FOR RECOMMENDED PCB LAYOUT.

5. COMPONENT STAY AWAY ZONE FROM CONNECTOR.

6. 6P(B)-24S-5P(A) CONFIGURATION IS SHOWN FOR ILLUSTRATION ONLY.

7. MANUFACTURER LOGO,PART NUMBER AND YEAR-WEEK CODE.

8. IMAGINARY LINE & DIMENSION TO POSITION AND PROVIDE CONNECTOR ORIENTATION W.R.T. TO PCB LAYOUT.

9. CONNECTORS ARE PACKED IN TRAY.

OBS TIN/LEAD P/N EC NO: S2011-0260 DRWN:SKANG 2010/10/05 CHKD:ATSEE 2010/11/29 APPR:MLONG 2010/12/01	DESCRIPTION REV	QUALITY SYMBOLS	GENERAL TOLERANCES (UNLESS SPECIFIED)		DIMENSION STYLE		SCALE	DESIGN UNITS	THIRD ANGLE PROJECTION		
			mm	INCH	MM/IN		NTS	METRIC			
		$\nabla F=0$	4 PLACES ± --- ± ---		DRAWN BY	DATE	TITLE				
		$\nabla F=0$	3 PLACES ± --- ± ---		CHECKED BY	DATE	MPS CONNECTOR, RECT P(B)-S-P(A) CONFIG, VERTICAL PRESS-FIT				
$\nabla F=0$	2 PLACES ± 0.13 ± ---		APPROVED BY	DATE	MOLEX INCORPORATED						
	1 PLACE ± 0.25 ± ---		SKTOH	2002/11/26						MATERIAL NO. 87665-1001 DOCUMENT NO. SD-87665-011 SHEET NO. 2 OF 2	
	ANGULAR ± 3 °		DRAFT WHERE APPLICABLE MUST REMAIN WITHIN DIMENSIONS		THIS DRAWING CONTAINS INFORMATION THAT IS PROPRIETARY TO MOLEX INCORPORATED AND SHOULD NOT BE USED WITHOUT WRITTEN PERMISSION						