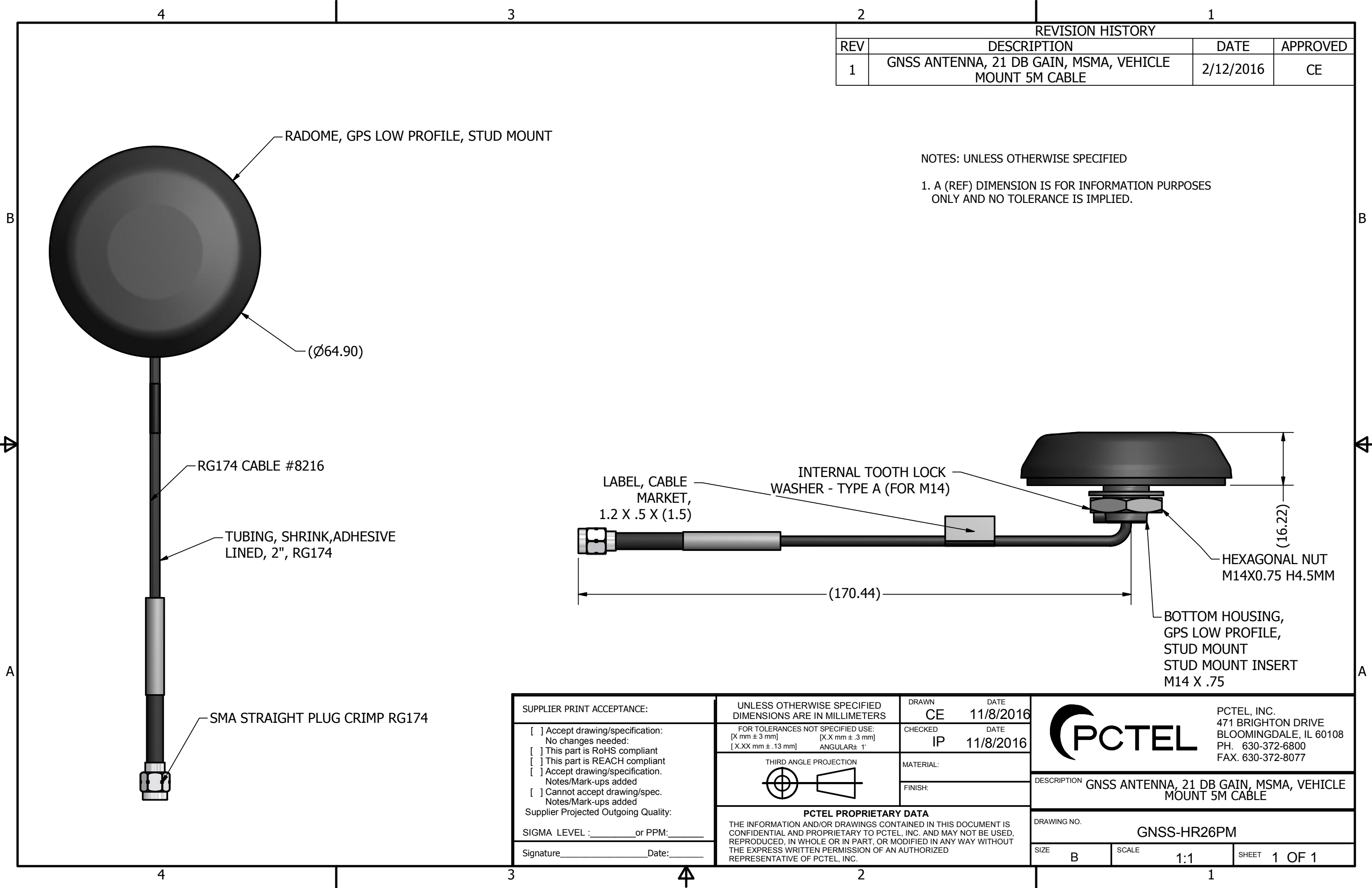


REVISION HISTORY			
REV	DESCRIPTION	DATE	APPROVED
1	GNSS ANTENNA, 21 DB GAIN, MSMA, VEHICLE MOUNT 5M CABLE	2/12/2016	CE

NOTES: UNLESS OTHERWISE SPECIFIED
 1. A (REF) DIMENSION IS FOR INFORMATION PURPOSES ONLY AND NO TOLERANCE IS IMPLIED.



RADOME, GPS LOW PROFILE, STUD MOUNT
 (Ø64.90)
 RG174 CABLE #8216
 TUBING, SHRINK, ADHESIVE LINED, 2", RG174
 SMA STRAIGHT PLUG CRIMP RG174

LABEL, CABLE MARKET, 1.2 X .5 X (1.5)
 INTERNAL TOOTH LOCK WASHER - TYPE A (FOR M14)
 (170.44)
 (16.22)
 HEXAGONAL NUT M14X0.75 H4.5MM
 BOTTOM HOUSING, GPS LOW PROFILE, STUD MOUNT STUD MOUNT INSERT M14 X .75

SUPPLIER PRINT ACCEPTANCE: <input type="checkbox"/> Accept drawing/specification: No changes needed: <input type="checkbox"/> This part is RoHS compliant <input type="checkbox"/> This part is REACH compliant <input type="checkbox"/> Accept drawing/specification. Notes/Mark-ups added <input type="checkbox"/> Cannot accept drawing/spec. Notes/Mark-ups added Supplier Projected Outgoing Quality: SIGMA LEVEL : _____ or PPM: _____ Signature _____ Date: _____	UNLESS OTHERWISE SPECIFIED DIMENSIONS ARE IN MILLIMETERS FOR TOLERANCES NOT SPECIFIED USE: [X mm ± 3 mm] [X.X mm ± .3 mm] [X.XX mm ± .13 mm] ANGULAR ± 1°	DRAWN CE DATE 11/8/2016 CHECKED IP DATE 11/8/2016 MATERIAL: FINISH:	PCTEL PCTEL, INC. 471 BRIGHTON DRIVE BLOOMINGDALE, IL 60108 PH. 630-372-6800 FAX. 630-372-8077
	THIRD ANGLE PROJECTION 	PCTEL PROPRIETARY DATA THE INFORMATION AND/OR DRAWINGS CONTAINED IN THIS DOCUMENT IS CONFIDENTIAL AND PROPRIETARY TO PCTEL, INC. AND MAY NOT BE USED, REPRODUCED, IN WHOLE OR IN PART, OR MODIFIED IN ANY WAY WITHOUT THE EXPRESS WRITTEN PERMISSION OF AN AUTHORIZED REPRESENTATIVE OF PCTEL, INC.	
		DESCRIPTION GNSS ANTENNA, 21 DB GAIN, MSMA, VEHICLE MOUNT 5M CABLE	
		DRAWING NO. GNSS-HR26PM	
		SIZE B	SCALE 1:1
		SHEET 1 OF 1	