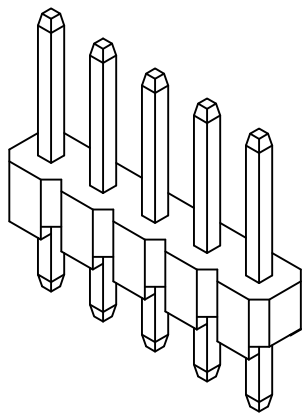


SIGN	DATE	DESCRIPTION	APPROVER

THIS IS CAD DRAWING, DO NOT REVISE MANUALLY!!!



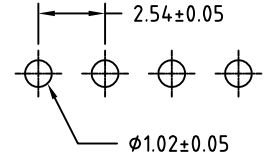
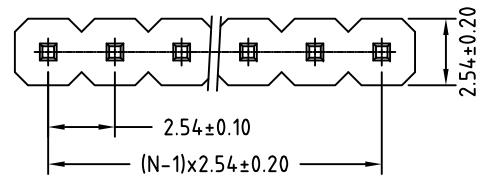
Dimensions in inches

A	B
095	110
105	135
120	105
125	125
170	160
224	100
230	095
230	100
230	120
230	125
235	195
235	410
265	115
276	116
295	135
318	125
340	090
420	115
430	100
500	120
520	110
620	110
820	110

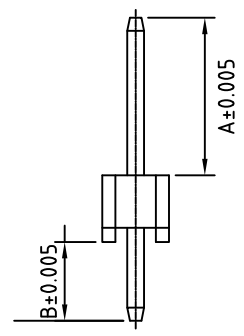
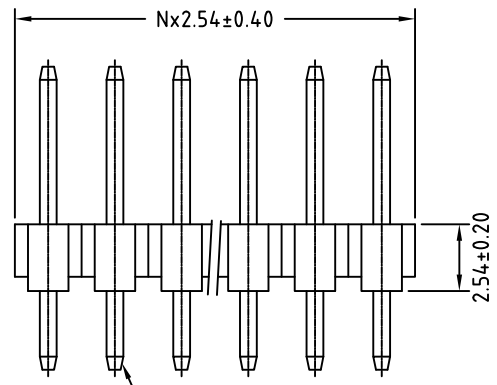
SPECIFICATIONS

Current Rating: 3A AC,DC
Voltage Rating: 250V AC,DC
Temperature Range: -55°C ~ +105°C
Contact Resistance: <20mΩ
Insulation Resistance: >1000MΩ
Withstanding Voltage: 1000V AC/minute
Insulator Material: PBT,UL94V-0
Contact: Copper Alloys
Under plating: Nickel
Color: Black

RoHS Compliant

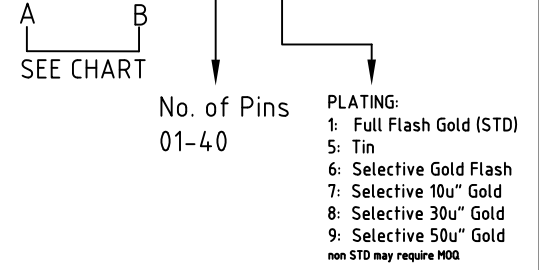


P.C.B. LAYOUT



PART NUMBER:

PH1-XXX/XXX-XXX



THESE DRAWINGS AND SPECIFICATIONS ARE THE PROPERTY OF ON-SHORE TECHNOLOGY, INC. AND SHALL NOT BE REPRODUCED, COPIED OR USED IN ANY MANNER WITHOUT THE PRIOR WRITTEN CONSENT OF ON-SHORE TECHNOLOGY, INC.



TITLE		PH1 - Pin header, thru hole, single row			
PART NO.	PH1-A/B-XXX	DWG NO.	PH1-A/B-XXX.DWG		
APPROVED	CHECKED	DESIGNED	DRAWN	4444	
		Tina 2013.04.10	Tina 2013.04.10	Tolerance	
				UNIT: mm	X° ±1°
				SCALE: NONE	XX ±0.38
				SHEET: 01/01	XXX ±0.25
				REV.: A	