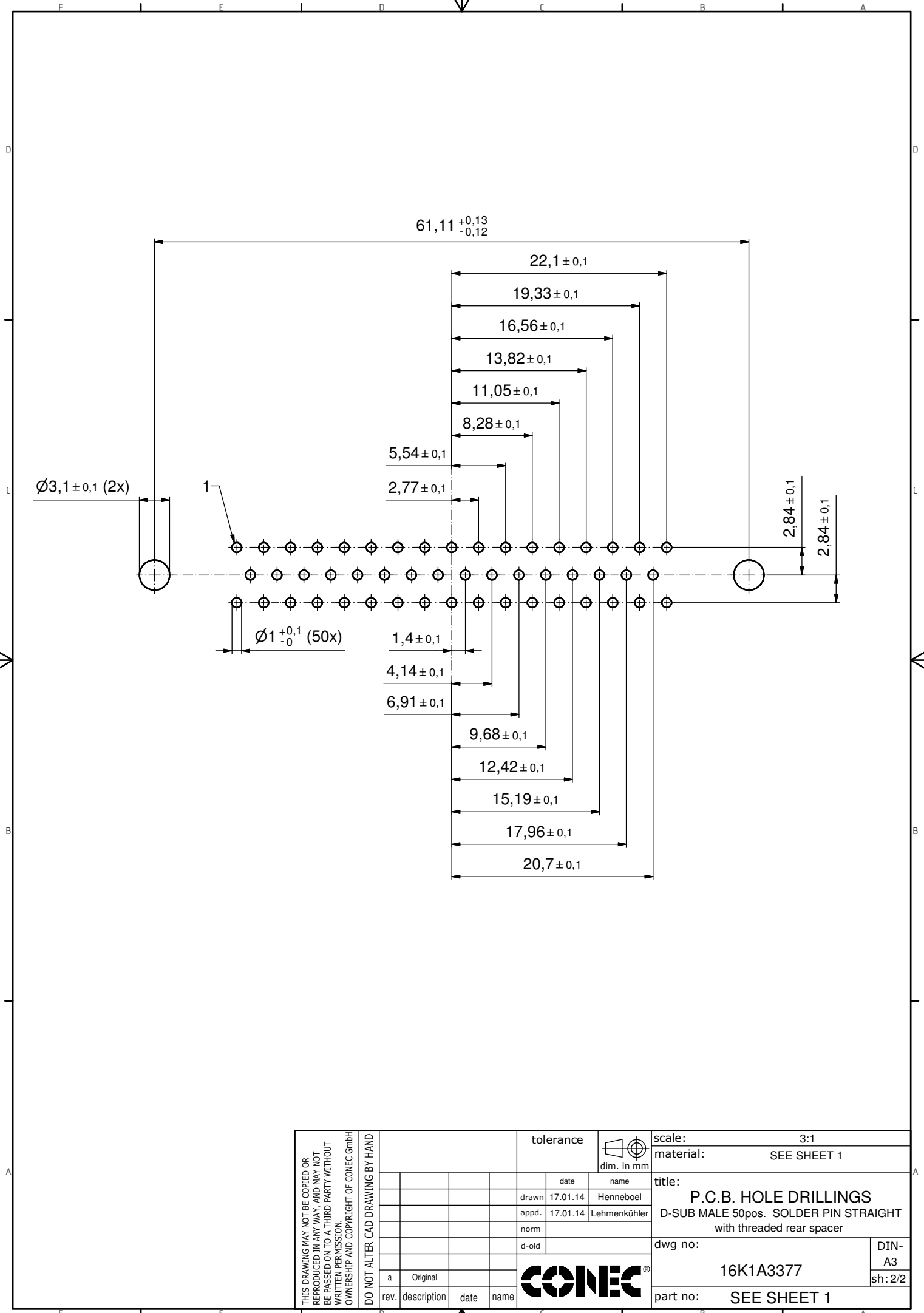


NOTES:

1. METALSHELLS: STEEL; min. 315µin TIN over 40-80µin NICKEL
2. INSULATORS: PBT GF UL 94 V-0; BLACK
3. CONTACTS: COPPER ALLOY; PLATING (SEE PART NO.):
 - PLEASE ADD A for GOLD FLASH over NICKEL (PREFERRED TYPE)
 - PLEASE ADD B for 20µin HARD GOLD over min. 50µin NICKEL
 - PLEASE ADD C for 30µin HARD GOLD over min. 50µin NICKEL
4. THREADED REAR SPACERS: COPPER ALLOY; min. 200µin TIN over 80µin NICKEL
5. SLEEVES: COPPER ALLOY; min. 200µin TIN over 80µin NICKEL
6. MAXIMUM TORQUE VALUE FOR THREAD: 6 in.LB
7. CONNECTOR IS PART MARKED: 163□13669X CONEC ABC (see note 3)

Directive 2002/95/EC RoHS compliant

THIS DRAWING MAY NOT BE COPIED OR REPRODUCED IN ANY WAY, AND MAY NOT BE PASSED ON TO A THIRD PARTY WITHOUT WRITTEN PERMISSION. OWNERSHIP AND COPYRIGHT OF CONEC GmbH DO NOT ALTER CAD DRAWING BY HAND				tolerance	dim. in mm	scale: 2:1 (5:1)	
				date		name	material: SEE NOTES
				drawn	17.01.14	Henneboel	title: D-SUB MALE 50pos. SOLDER PIN STRAIGHT with threaded rear spacer
				appd.	17.01.14	Lehmenkühler	
				norm			
				d-old			
	a	Original					dwg no:
rev.	description	date	name				16K1A3377
						part no:	163□13669X (see note 3)



THIS DRAWING MAY NOT BE COPIED OR REPRODUCED IN ANY WAY, AND MAY NOT BE PASSED ON TO A THIRD PARTY WITHOUT WRITTEN PERMISSION. OWNERSHIP AND COPYRIGHT OF CONEC GmbH DO NOT ALTER CAD DRAWING BY HAND					tolerance	 dim. in mm	scale:	3:1		
					date		name	material:	SEE SHEET 1	
					drawn	17.01.14	Henneboel	title: P.C.B. HOLE DRILLINGS D-SUB MALE 50pos. SOLDER PIN STRAIGHT with threaded rear spacer		
					appd.	17.01.14	Lehmenkühler			
					norm					
					d-old					
	a	Original						dwg no:	16K1A3377	DIN-A3
	rev.	description	date	name				part no:	SEE SHEET 1	sh: 2/2