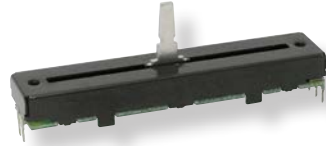




# PRODUCT CHANGE NOTIFICATION

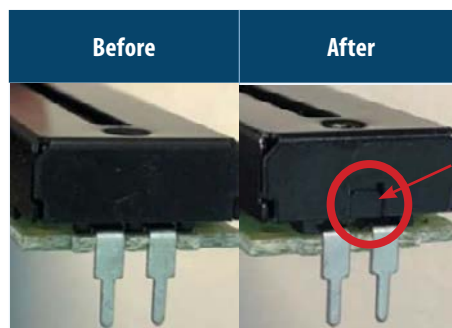
## SLIDE POTENTIOMETERS



### Structure Improvement for Bourns® Low Profile Slide Potentiometers *Model PTE Series*

Riverside, California – October 19, 2020 – As part of our continuous improvement efforts, effective December 15, 2020, the structure of the Bourns® [Model PTE Low Profile Slide Potentiometer Series](#) will be enhanced by adding a feature shown in the “After” picture below to prevent the lever from swinging over the limit of the slide during extreme operation. This improvement will eliminate the abnormal clicking sound caused when the lever reaches an end.

The change will affect the form of the product, as depicted below. The fit and function will remain the same. The quality and reliability of the product should improve. With this new structure, there should be no abnormal clicking sound. A list of affected part numbers is included on the next page.



Implementation dates are as follows:

Last time to buy existing products: **December 15, 2020**  
Date manufacturing of existing products will cease: **January 12, 2021**  
Date that evaluation samples will be available: **January 12, 2021**  
Date of delivery of modified products: **February 10, 2021**  
First date code using the above changes: **2103**

If you have any questions or need additional information, please feel free to contact [Customer Service/ Inside Sales](#).

*Users should verify that the described changes will not impact the performance of the product in their specific applications.*

SC2035



Affected Part Numbers					
PTE45-151A-102B2	PTE45-152A-203B2	PTE45-DJ01-103B1	PTE60-132D-104B2	PTE60-151B-502B2	PTE60-152B-503B2
PTE45-151A-103B1	PTE45-152A-503B2	PTE60-152B-203B2	PTE60-151A-102B2	PTE60-151B-503B2	PTE60-201A-504B2
PTE45-151A-104B2	PTE45-152B-503B2	PTE60-152B-204B2	PTE60-151A-103B1	PTE60-152A-103B2	PTE60-201B-502B2
PTE45-151A-203B1	PTE45-152E-102B2	PTE60-121C-103B1	PTE60-151A-103B2	PTE60-152A-104B2	PTE60-202A-103B2
PTE45-151A-502B2	PTE45-152E-203B2	PTE60-121C-103B2	PTE60-151A-104B2	PTE60-152A-202B2	PTE60-202A-105B2
PTE45-151B-102B2	PTE45-152E-503B2	PTE60-122C-103A2	PTE60-151A-203B2	PTE60-152A-503B2	PTE60-202A-203B2
PTE45-151B-502B2	PTE45-201A-503B1	PTE60-122C-103B2	PTE60-151A-502B2	PTE60-152B-102B2	PTE60-202A-502B2
PTE45-151E-103B1	PTE45-201A-504B1	PTE60-122C-104A2	PTE60-151B-102B2	PTE60-152B-103B1	PTE60-202B-102B2
PTE45-151E-203B2	PTE45-202A-104B2	PTE60-122C-104B2	PTE60-151B-103B1	PTE60-152B-103B2	PTE60-202B-204B2
PTE45-152A-102B2	PTE45-202B-104B2	PTE60-131D-103B2	PTE60-151B-103B2	PTE60-152B-104B2	
PTE45-152A-103B1	PTE45-202E-103A2	PTE60-132D-103B2	PTE60-151B-104B2	PTE60-152B-502B2	