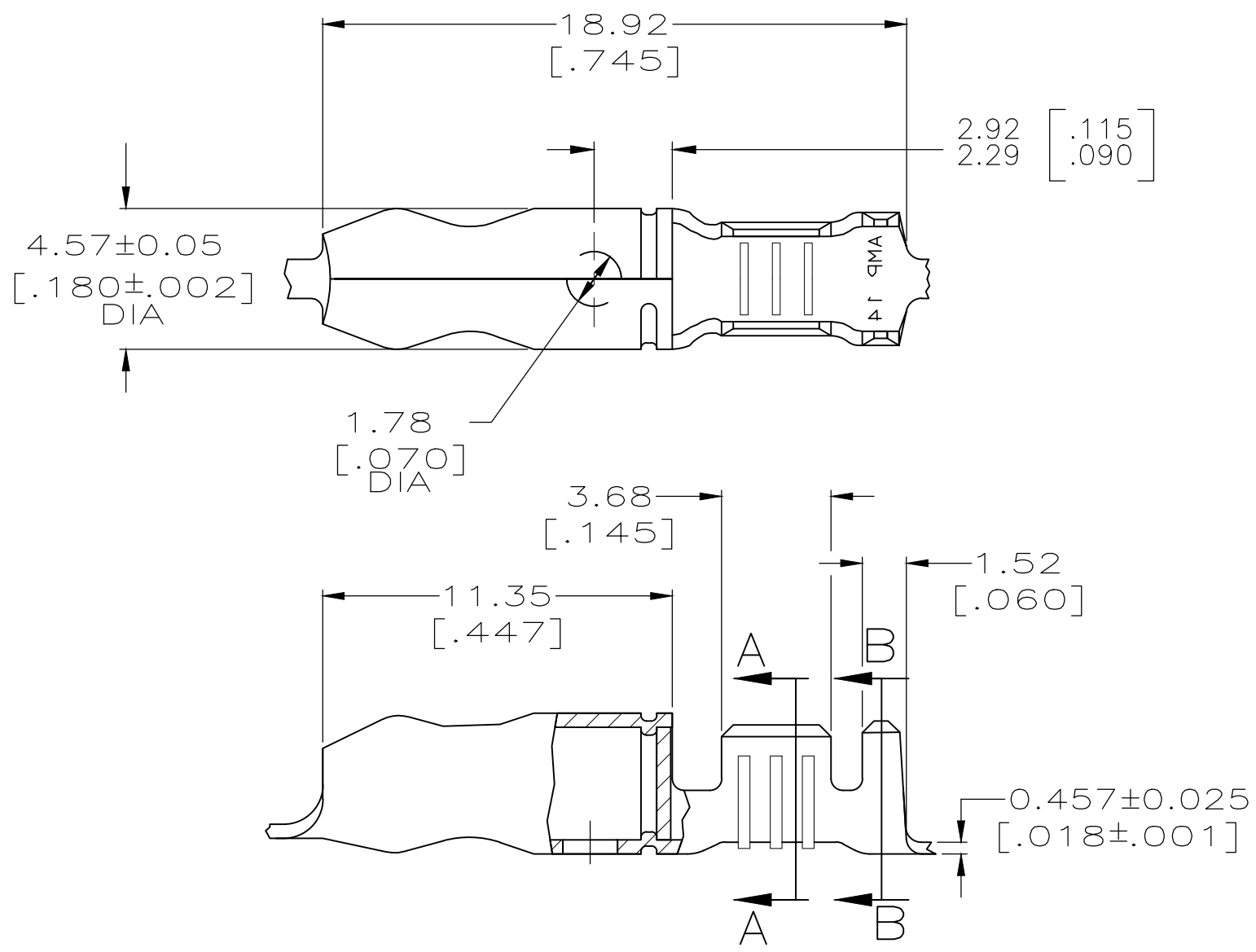
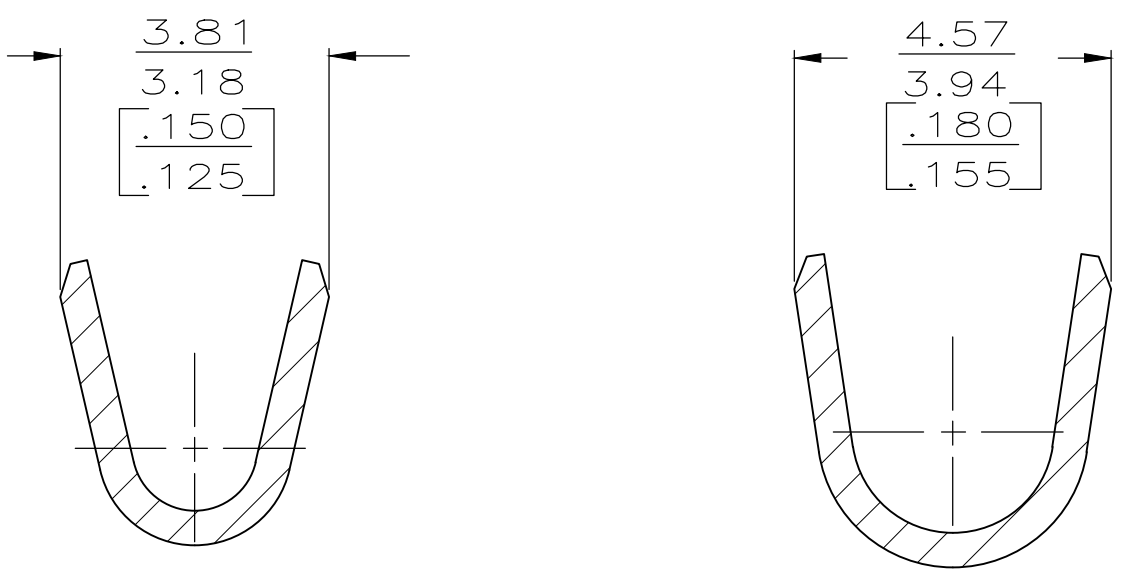


THIS DRAWING IS UNPUBLISHED. RELEASED FOR PUBLICATION  
 © COPYRIGHT - By - ALL RIGHTS RESERVED.

REVISIONS				
P	LTR	DESCRIPTION	DATE	APVD
	R4	REVISED PER ECR-19-006625	17JUN2019	LZ TD



- 1 CONTINUOUS STRIP ON REEL.
- △2 0.002032 [.000080] MIN TIN PLATE.
- △3 0.002032 [.000080] MIN TIN PLATE OVER 0.00127 [.000050] MIN NICKEL UNDERPLATE.
- △4 WITH INTERLEAVING PAPER
- △5 0.00508 [.000200] MIN SILVER PLATE OVER 0.00127 [.000050] MIN NICKEL PLATE
- △6 0.000762 [.000030] MIN GOLD OVER 0.00127 [.000050] MIN NICKEL UNDERPLATE.
- 7 WIRE SIZE IS [#18-#14] AWG
- 8 INSULATION RANGE IS 2.29-3.18 [.090-.125] DIA
- △9 PRELIMINARY - NOT FOR PRODUCTION



SECTION A-A  
SCALE 10:1

SECTION B-B  
SCALE 10:1

OBSOLETE	△5	081 BRASS	60793-7
	△6	081 BRASS	△9 <del>60793-6</del>
	△2	081 BERYLLIUM COPPER	△9 <del>60793-5</del> △4
	△2	081 BRASS	<del>60793-4</del>
	△3	081 BRASS	60793-3
	△2	081 BRASS	60793-1
	FINISH	MATERIAL	PART NUMBER

THIS DRAWING IS A CONTROLLED DOCUMENT.		DWN 11/NOV/96 PHILLIP M FORTNEY	<b>STE</b> TE Connectivity	
		CHK 11/NOV/96 JEFF R RUTH		
DIMENSIONS: mm [INCHES]		APVD 11/NOV/96 GARY YETTER	NAME	
 0 PLC ± - 1 PLC ± - 2 PLC ± 0.25 [.010] 3 PLC ± - 4 PLC ± - ANGLES ± -		PRODUCT SPEC		SHUR PLUG, 4.57 [.180] DIA
		APPLICATION SPEC		
MATERIAL SEE TABLE	FINISH SEE TABLE	WEIGHT 0.000000	SIZE A3	CAGE CODE 00779
CUSTOMER DRAWING			DRAWING NO C-60793	RESTRICTED TO -
			SCALE 5:1	SHEET 1 OF 1
			REV R4	