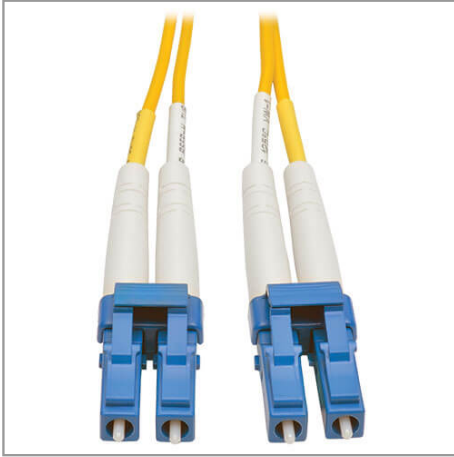


Duplex Singlemode 9/125 Fiber Patch Cable (LC/LC), 40 m (131 ft.)

MODEL NUMBER: N370-40M



Premium singlemode fiber optic cabling transmits fast, clear data signals through your LAN with data transfer speeds up to 10 Gbps.

Features

Fast, Clear Data Transmission Through Your LAN

- Data transfer speeds up to 10 Gbps
- Ideal for network equipment that requires singlemode fiber optic patch cables
- Attenuation loss meets or exceeds latest industry standards

Superior Construction for Error-Free Signal Transfer

- 9/125 duplex (zipcord) fiber made from glass
- Sturdy LC male connectors meet stringent insertion loss standards
- Beveled edge on glass ends for easy plug insertion
- Yellow-colored for identification as singlemode

Specifications

OVERVIEW	
UPC Code	037332195777
Technology	Singlemode
Optical Mode	OS2
PHYSICAL	
Cable Jacket Color	Yellow
Connector Color	Blue; White

Highlights

- Attenuation loss meets or exceeds latest industry standards
- 9/125 duplex (zipcord) fiber made from glass
- LC male connectors meet insertion loss standards
- FDDI- and OFNR-rated
- Beveled edge on glass ends for easy plug insertion

System Requirements

- Fiber optic hardware or NIC card requiring singlemode duplex cable with LC/LC connectors

Package Includes

- N370-40M Duplex Singlemode 9/125 Fiber Patch Cable, 40 m

Cable Jacket Material	LSZH
Cable Jacket Rating	OFNR
Clad Diameter (microns)	125
Core Diameter (microns)	9
Number of Fibers	2
Cable Length (ft.)	131.2
Cable Length (m)	40.00
Cable Length (in.)	1574.8
Minimum Bend Radius	20 mm (Dynamic); 10 mm (Static)
Shipping Dimensions (hwd / in.)	9.00 x 7.00 x 0.50
Shipping Dimensions (hwd / cm)	22.86 x 17.78 x 1.27
Shipping Weight (lbs.)	0.68
Shipping Weight (kg)	0.31
Fiber Cable Length	40M (131.2 ft)
ENVIRONMENTAL	
Operating Temperature Range	-4° to 140°F (-20° to 60°C)
Storage Temperature Range	-4° to 140°F (-20° to 60°C)
Operating Humidity Range	5% to 85% RH, Non-Condensing
Storage Humidity Range	35% to 65% RH, Non-Condensing
COMMUNICATIONS	
Network Compatibility	1 Gbps (Gigabit); 10 Gbps; 25 Gbps; 40 Gbps; 100 Gbps; 400 Gbps
Attenuation @ 1310NM	0.36 dB/km
Attenuation @ 1550NM	0.22 dB/km
Insertion Loss	0.30 dB
CONNECTIONS	
Side A - Connector 1	LC DUPLEX (MALE)
Side B - Connector 1	LC DUPLEX (MALE)
Endface Polish	UPC
FEATURES & SPECIFICATIONS	
Push/Pull Tabs	No
Breakout	No
Trunk	No

STANDARDS & COMPLIANCE	
Product Compliance	RoHS; REACH
WARRANTY & SUPPORT	
Product Warranty Period (Worldwide)	Lifetime limited warranty