

ACCELERATE®

(0.635 mm) .025"

ARF6-08-S-RA-TR



ARF6-16-S-RA-TR



ARF6-RA SERIES

# RUGGED RIGHT-ANGLE SLIM SOCKET

## SPECIFICATIONS

For complete specifications see [www.samtec.com?ARF6-RA](http://www.samtec.com?ARF6-RA)

**Insulator Material:**

LCP, Black

**Contact Material:**

Copper Alloy

**Shield Material:**

Phosphor Bronze

**Plating:**

Au or Sn over

50 μm (1.27 μm) Ni

**Operating Temp Range:**

-40 °C to +125 °C

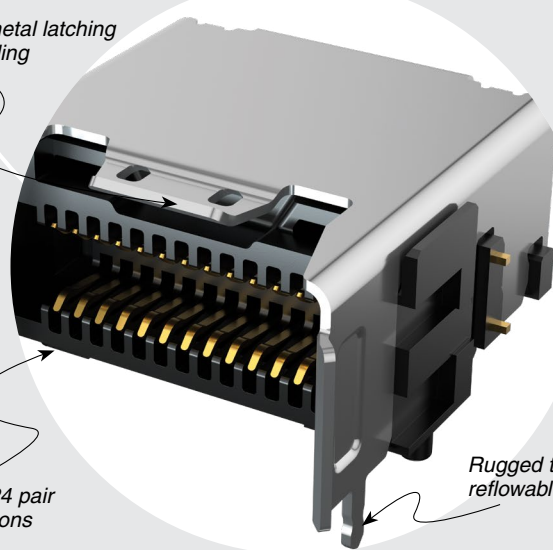
Mates with:  
ARC6

PAM4	NRZ
56 Gbps	28 Gbps

Rugged metal latching and shielding

8, 16 and 24 pair configurations

Rugged through-hole reflowable weld tabs

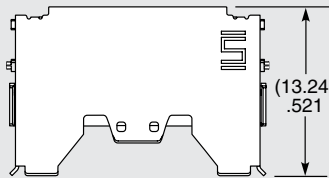


ARF6	NO. OF PAIRS	PLATING	RA	"X"R
	-08 = 8 Pairs	-S = 30 μm (0.76 μm) Gold on contact area, Matte Tin on tail	RA	-TR = Tape & Reel
	-16 = 16 Pairs			-FR = Full Reel Tape & Reel (must order max. quantity per reel; contact Samtec for quantity breaks)
	-24 = 24 Pairs			

## IN DEVELOPMENT

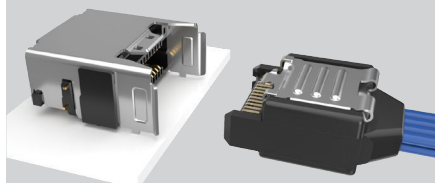
- 24 pairs

-24 PAIRS  
PRELIMINARY



NO. OF PAIRS	A	B	C	N	N-1
-08	(12.46) .491	(7.62) .300	(11.30) .445	26	25
-16	(20.08) .791	(15.24) .600	(18.92) .745	50	49
-24	(27.70) 1.091	(22.86) .900	(26.54) 1.045	74	73

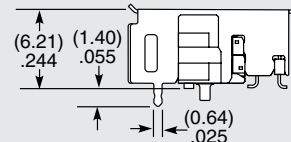
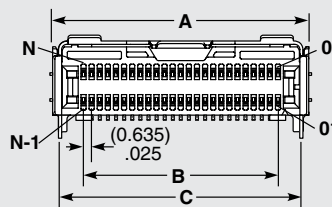
## APPLICATION



**Notes:**

Tape & Reel packaging is standard.

Some sizes, styles and options are non-standard, non-returnable.



ARF6-16-X-RA SHOWN