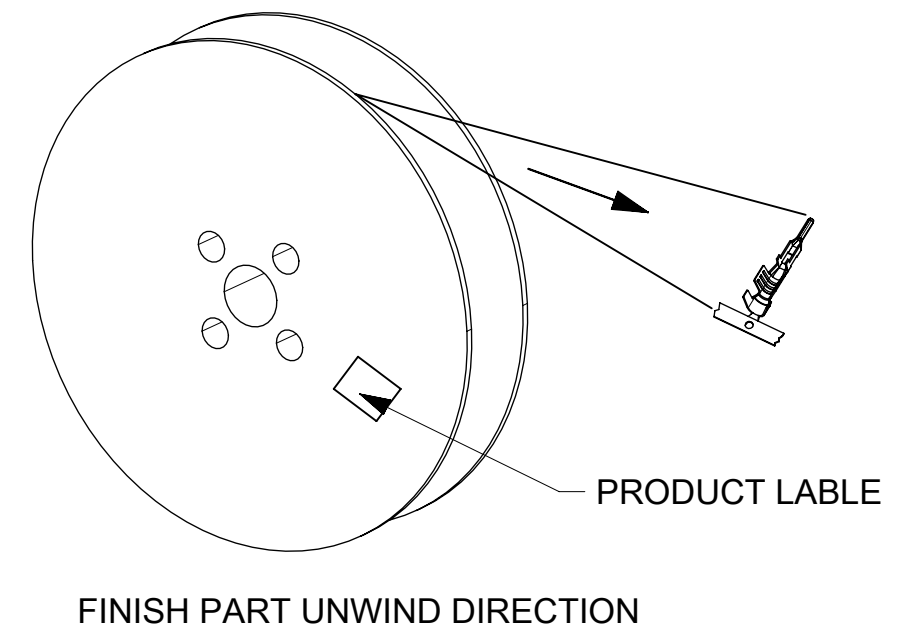
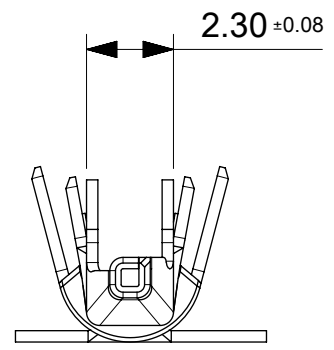
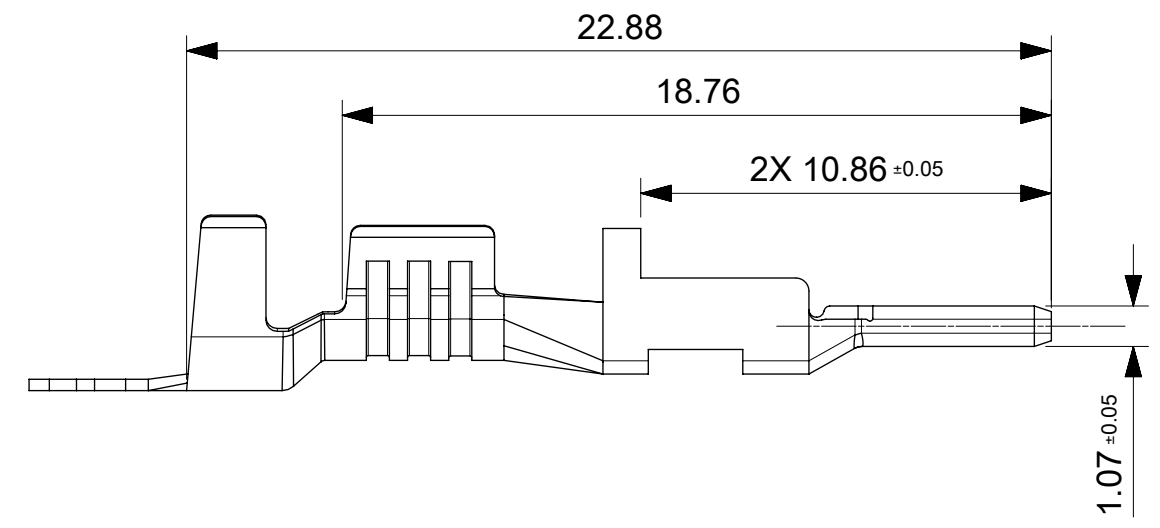
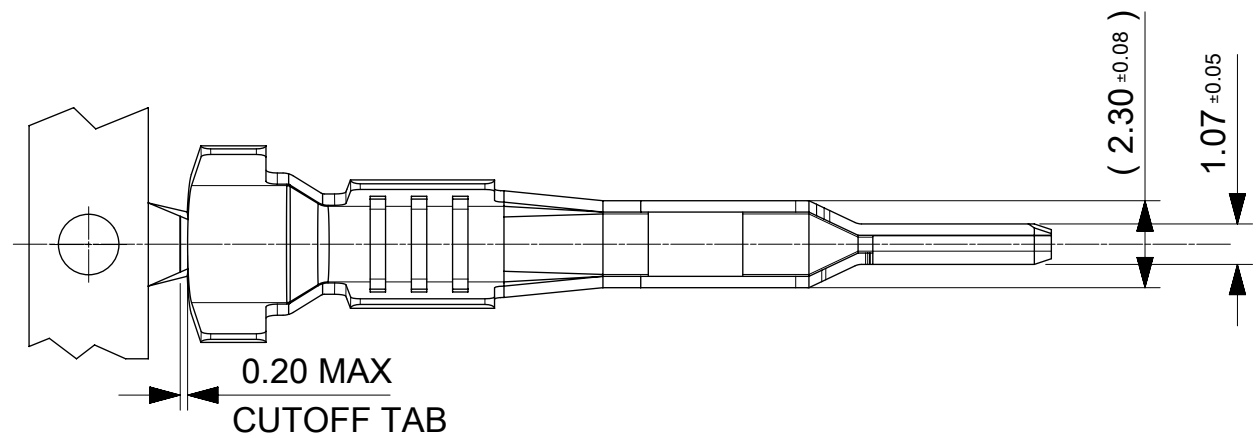
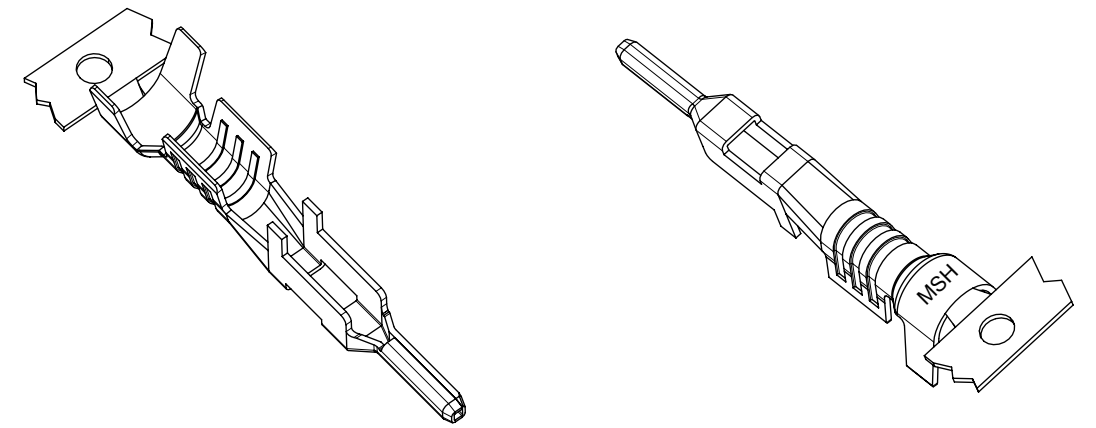
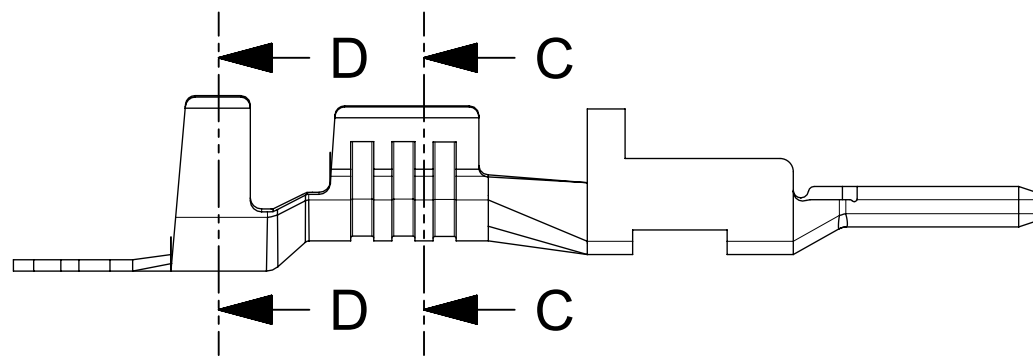


WIRE GAUGE	PART NO.	PLATING OPTION	LUBED	DIM "A"
10AWG	105417-0332	HOT DIP TIN PREPLATE-OVERALL 1.0µm(40µ") MIN	YES	14.00
12AWG	105417-0333			13.00
14/16AWG	105417-0334			13.00
10AWG	105418-0312	15u" GOLD 0.38µm(15µ") GOLD CONTACT AREA, 1.5µm(60µ")-2.5µm(100µ") MATTE TIN, OVER 1.25µm(50µ")-2.5µm(100µ") NICKEL OVERALL	YES	14.00
12AWG	105418-0313			13.00
14/16AWG	105418-0314			13.00
10AWG	105418-1312	30u" GOLD 0.76µm(30µ") GOLD CONTACT AREA, 1.5µm(60µ")-2.5µm(100µ") MATTE TIN, OVER 1.25µm(50µ")-2.5µm(100µ") NICKEL OVERALL	YES	14.00
12AWG	105418-1313			13.00
14/16AWG	105418-1314			13.00

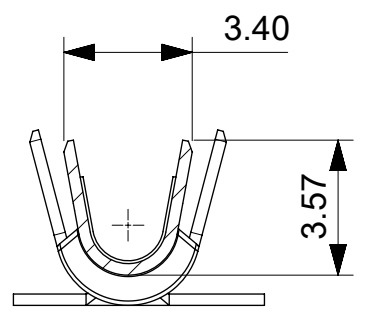


- NOTES:
1. MATERIAL: HIGH CONDUCTIVITY COPPER ALLOY.
  2. FINISH: SEE CHART.
  3. PRODUCT SPECIFICATION: 1054171000-PS.
  4. PACKAGING SPECIFICATION: REEL PER 1054170100.
  5. TERMINAL USED WITH MOLEX SERIES  
PLUG HOUSING: 105411, 213814 AND 213815  
FEMALE TERMINALS 76823/172063
  6. APPLICATION SPECIFICATION: 768232000-AS

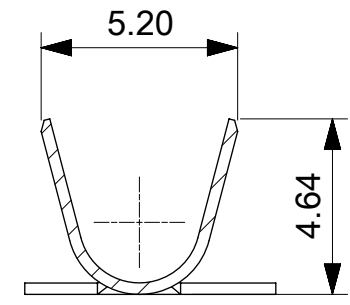
FUNCTIONAL SYMBOLS	THIS DRAWING CONTAINS INFORMATION THAT IS PROPRIETARY TO MOLEX ELECTRONIC TECHNOLOGIES, LLC AND SHOULD NOT BE USED WITHOUT WRITTEN PERMISSION		CURRENT REV DESC:		<b>molex</b>
	△/A = 0	mm	1:1		
DIVISIONAL SYMBOLS	GENERAL TOLERANCES (UNLESS SPECIFIED)		EC NO: 663522		MEGA-FIT MALE TML FOR 14/16AWG, 12AWG, AND 10AWG WIRE
	△/E = 0	ANGULAR TOL ± 0.5°		DRWN: ALU002	
DIVISIONAL SYMBOLS	△/F = 0	4 PLACES	±	2021/02/02	PRODUCT CUSTOMER DRAWING
		3 PLACES	±	2021/05/24	
		2 PLACES	± 0.25	2021/05/24	DOCUMENT NUMBER
		1 PLACE	± 0.35	2016/12/15	1054170100
	0 PLACES	±	2018/08/06	DOC TYPE	
DRAFT WHERE APPLICABLE MUST REMAIN WITHIN DIMENSIONS		THIRD ANGLE PROJECTION	DRAWING	SERIES	MATERIAL NUMBER
			A3-SIZE	105417	CUSTOMER
					SEE TABLE
					GENERAL MARKET
					SHEET NUMBER
					1 OF 3



14/16 AWG WIRE STYLES

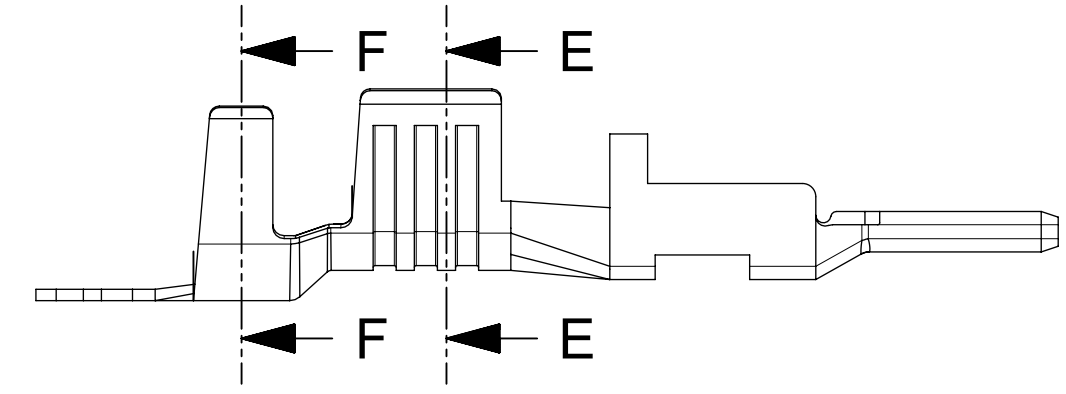


SECTION C-C

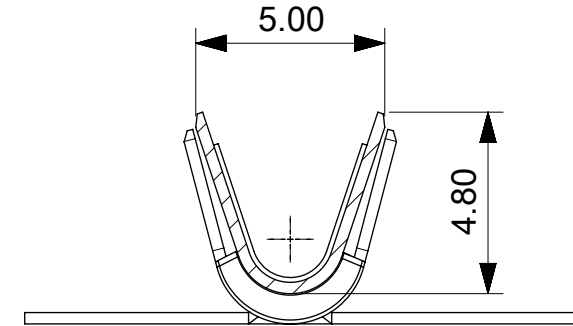


SECTION D-D

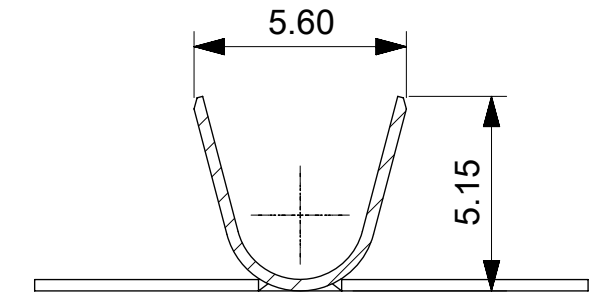
CONDUCTOR AND INSULATION 14/16 AWG WIRE STYLES



12 AWG WIRE STYLES



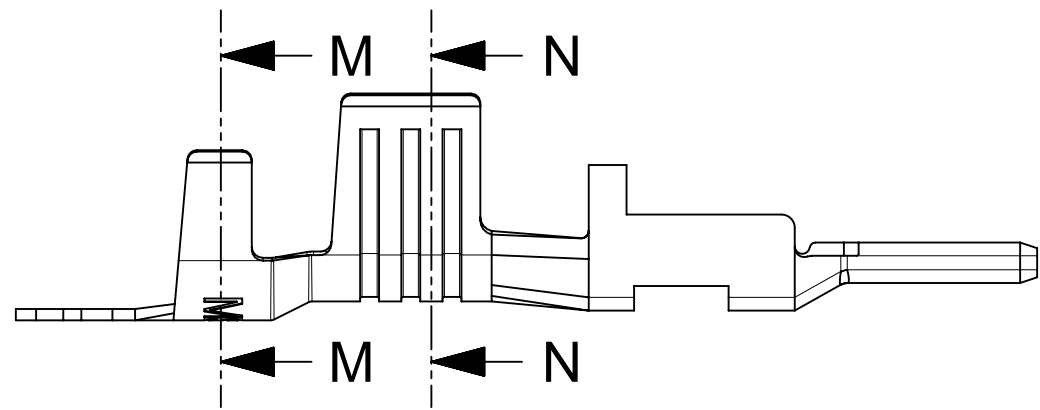
SECTION E-E



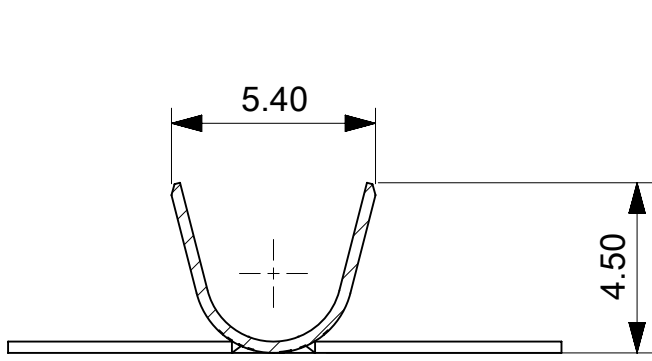
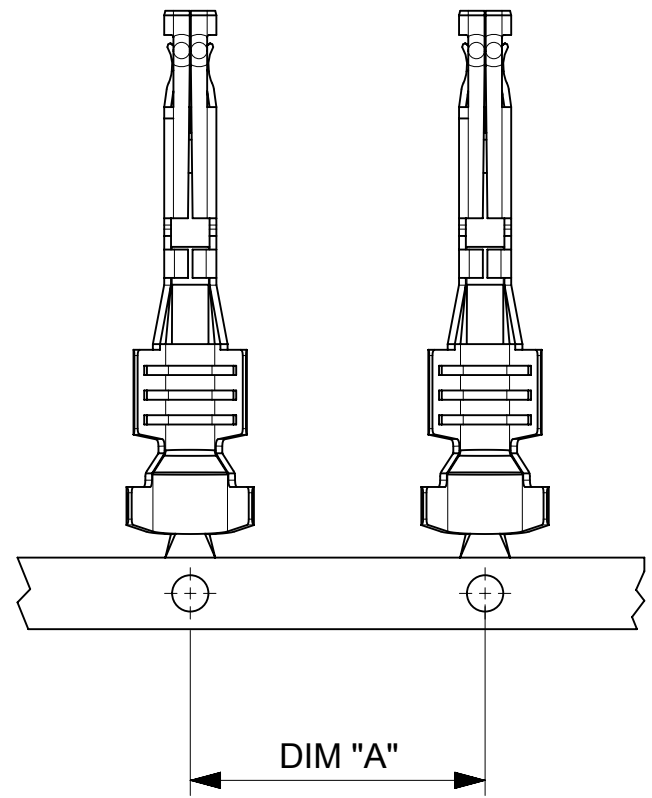
SECTION F-F

CONDUCTOR AND INSULATION 12 AWG WIRE STYLES

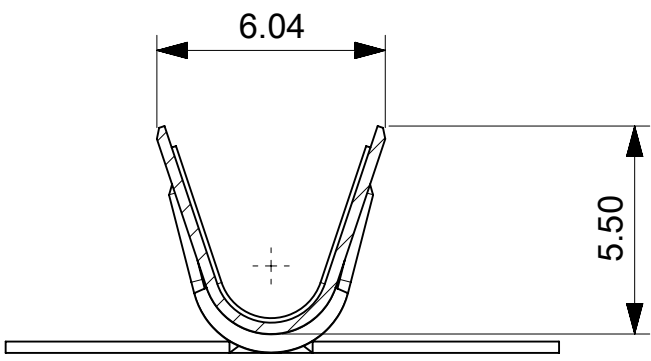
FUNCTIONAL SYMBOLS	THIS DRAWING CONTAINS INFORMATION THAT IS PROPRIETARY TO MOLEX ELECTRONIC TECHNOLOGIES, LLC AND SHOULD NOT BE USED WITHOUT WRITTEN PERMISSION		CURRENT REV DESC:		<b>molex</b>		
	DRWN: ALU002	2021/02/02					
GENERAL TOLERANCES (UNLESS SPECIFIED)	SCALE: 5:1		EC NO: 663522		PRODUCT CUSTOMER DRAWING		
ANGULAR TOL ± 0.5°	DIMENSION UNITS: mm		DRWN: YXZHENG				
4 PLACES ±	DIVISIONAL SYMBOLS		CHK'D: YXZHENG		DOC TYPE: PSD		
3 PLACES ±	2 PLACES ± 0.25		APPR: YXZHENG				
2 PLACES ±	1 PLACE ± 0.35		INITIAL REVISION:		REVISION: C2		
1 PLACE ±	0 PLACES ±		DRWN: YXZHENG				
DRAFT WHERE APPLICABLE MUST REMAIN WITHIN DIMENSIONS	THIRD ANGLE PROJECTION		APPR: YXZHENG		MATERIAL NUMBER: SEE TABLE		
DRAWING: A3-SIZE		SERIES: 105417		CUSTOMER: GENERAL MARKET			
SHEET NUMBER: 2 OF 3		DATE: 2021/05/24					DATE: 2020/01/14



10 AWG WIRE STYLES



SECTION M-M



SECTION N-N

CONDUCTOR AND INSULATION 10 AWG WIRE STYLES

FUNCTIONAL SYMBOLS	THIS DRAWING CONTAINS INFORMATION THAT IS PROPRIETARY TO MOLEX ELECTRONIC TECHNOLOGIES, LLC AND SHOULD NOT BE USED WITHOUT WRITTEN PERMISSION		CURRENT REV DESC:		<b>molex</b>
	△/A = 0	mm	SCALE 5:1		
DIVISIONAL SYMBOLS	GENERAL TOLERANCES (UNLESS SPECIFIED)		EC NO: 663522		MEGA-FIT MALE TML FOR 14/16AWG, 12AWG, AND 10AWG WIRE
	△/E = 0	ANGULAR TOL ± 0.5°		DRWN: ALUO02 2021/02/02	
DIVISIONAL SYMBOLS	△/F = 0	4 PLACES	±	CHK'D: YXZHENG 2021/05/24	PRODUCT CUSTOMER DRAWING
		2 PLACES	±	APPR: YXZHENG 2021/05/24	
		1 PLACE	±	INITIAL REVISION:	DOCUMENT NUMBER
		0 PLACES	±	DRWN: YXZHENG 2016/12/15	1054170100
DRAFT WHERE APPLICABLE MUST REMAIN WITHIN DIMENSIONS		THIRD ANGLE PROJECTION	DRAWING A3-SIZE	SERIES 105417	DOC TYPE PSD
				MATERIAL NUMBER SEE TABLE	DOC PART 000
				CUSTOMER GENERAL MARKET	REVISION C2
					SHEET NUMBER 3 OF 3