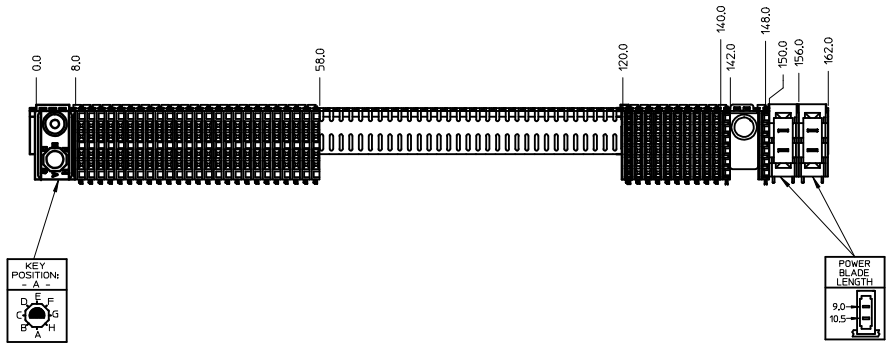
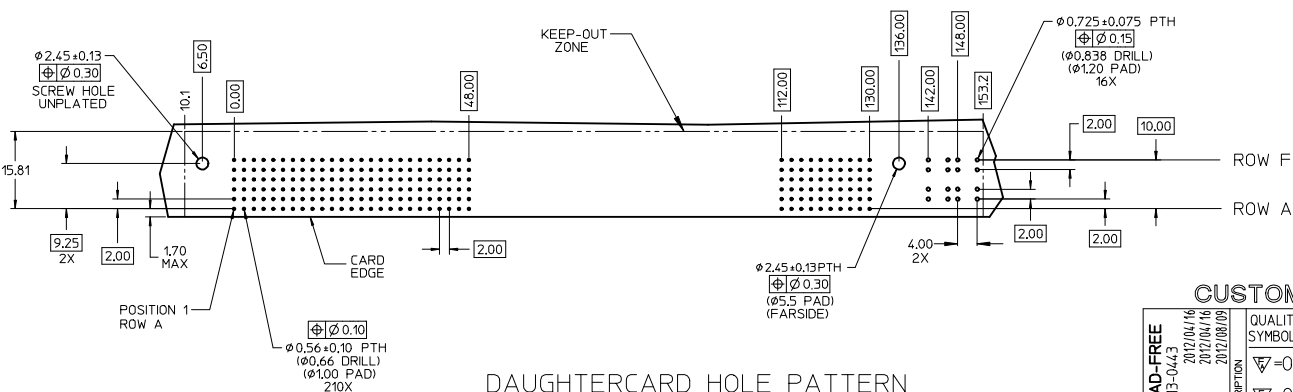


NOTES:

1. MATERIALS: HOUSING : LIQUID CRYSTAL POLYMER (LCP) GLASS-FILLED, UL94V-0, BLACK. TERMINALS: COPPER ALLOY STIFFENER: STAINLESS STEEL
2. FINISH: SELECTIVE GOLD (Au) 0,76 MICROMETERS MINIMUM IN CONTACT AREA, SELECTIVE MATTE TIN (Sn) IN TAIL AREA; NICKEL (Ni) UNDERPLATE OVERALL.
3. REFER TO MOLEX PRODUCT SPECIFICATION PS-74031-999 FOR PERFORMANCE SPECIFICATIONS.
4. PACKAGED PER PK-70873-5040. SCREWS PACKED IN BAGS INSIDE OF TUBES.
5. REFER TO MOLEX DOCUMENT SD-74881-002 FOR ADDITIONAL DETAIL ON THE HSD SIGNAL WAFER.
6. REFER TO MOLEX DOCUMENT SD-75187-001 FOR ADDITIONAL DETAIL ON THE L-SERIES SIGNAL WAFER.
7. REFER TO MOLEX DOCUMENT SD-74037-005 FOR ADDITIONAL DETAIL ON THE GUIDANCE MODULE.
8. REFER TO MOLEX DOCUMENT SD-75885-001 FOR ADDITIONAL DETAIL ON THE LEAD-FREE POWER MODULE.
9. REFER TO MOLEX DOCUMENT SD-74038-003 FOR ADDITIONAL DETAIL ON THE END CAP.
10. REFER TO MOLEX DOCUMENT SD-74039-028 FOR ADDITIONAL DETAIL ON THE GROUND MODULE.
11. MARK LABEL WITH PART NUMBER AND DATE CODE. LABEL MAY BE REPLACED BY LASER MARKINGS ON THE STIFFENER.
12. THIS PART CONFORMS TO CLASS B REQUIREMENTS OF MOLEX COSMETIC SPECIFICATION PS-45499-002.



ITEM	PART NUMBER	QTY	DESCRIPTION
1	74036-0163	1	STIFFENER
2	75187-1005	10	SIGNAL WAFER - VHDM6 LITE, LF
3	74881-1001	25	SIGNAL WAFER - HSD6, LF
4	75885-6320	2	POWER MODULE, LF
5	74039-6816	1	GROUND MODULE
6	73774-1000	1	SEMS MACHINE SCREW
7	74037-6001	1	GUIDE MODULE, KEY A
8	73726-0000	1	MOUNTING SCREW
9	74038-0001	2	VHDM END CAP



LEAD-FREE PLATING

CUSTOMER: QUANTUM BRIDGE

C EC NO: UCP2013-0443 DRAWN BY: CHYK-WOLFE CHECKED BY: APPR:SMILLER DATE: 2012/04/16 DATE: 2012/08/09	QUALITY SYMBOLS ∇=0 ∇=0 ∇=0	GENERAL TOLERANCES (UNLESS SPECIFIED) DIMENSION STYLE: MM ONLY SCALE: 2:1 DESIGN UNITS: METRIC THIRD ANGLE PROJECTION	DIMENSION STYLE: MM ONLY SCALE: 2:1 DESIGN UNITS: METRIC THIRD ANGLE PROJECTION	DRAWN BY: THOMAS DATE: 2004/05/04 CHECKED BY: JBRINGHAM DATE: 2004/05/05 APPROVED BY: SREED DATE: 2004/05/06	TITLE: 6 ROW VHDM-LITE/HSD LF HYBRID DAUGHTERCARD SALES DRAWING molex	
	EC NO: UCP2013-0443 DRAWN BY: CHYK-WOLFE CHECKED BY: APPR:SMILLER DATE: 2012/04/16 DATE: 2012/08/09	MATERIAL NO: 75296-0015 DOCUMENT NO: SD-75296-015 SHEET NO: 1 OF 1	MATERIAL NO: 75296-0015 DOCUMENT NO: SD-75296-015 SHEET NO: 1 OF 1	MATERIAL NO: 75296-0015 DOCUMENT NO: SD-75296-015 SHEET NO: 1 OF 1	MATERIAL NO: 75296-0015 DOCUMENT NO: SD-75296-015 SHEET NO: 1 OF 1	MATERIAL NO: 75296-0015 DOCUMENT NO: SD-75296-015 SHEET NO: 1 OF 1
	THIS DRAWING CONTAINS INFORMATION THAT IS PROPRIETARY TO MOLEX INCORPORATED AND SHOULD NOT BE USED WITHOUT WRITTEN PERMISSION					