



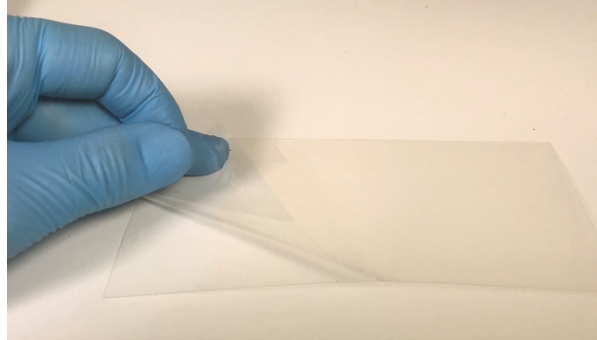
- 3M™ Glossy Low-Reflective Film (GLR320)
- Protect your Product Against Damage Caused by Scratches or Gouges
- Easy-to-Apply, Easy-to-Remove, Re-Positionable and Residue-Free
- Does Not Adversely Impact Touch Panel Operation



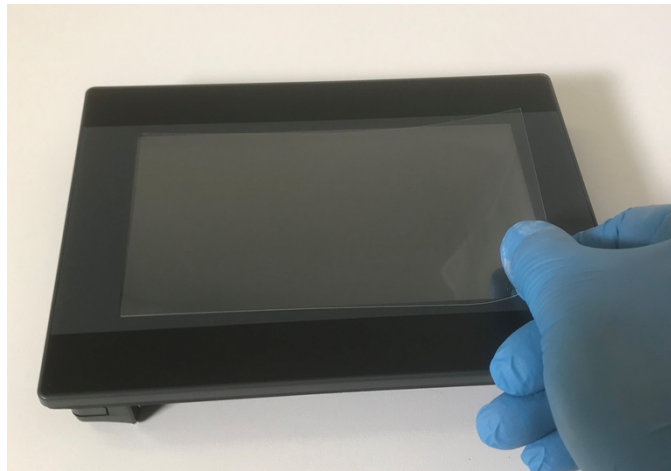
Part Number	Screen Size	Products	Dim A (mm)	Dim B (mm)
2511-0043	4.3"	All	94	53
2511-0070	7.0"	HMI, cMT	153	85
2511-0070A	7.0"	HMC, OMI	153	92
2511-0080	8.0"	All	162	121
2511-0097	9.7"	All	196	147
2511-0101	10.1"	HMI, cMT	222	125
2511-0101A	10.1"	HMC	223	133
2511-0101B	10.1"	OMI	227	136
2511-0104	10.4"	All	221	160
2511-0121	12.1"	All	245	187
2511-0150	15.0"	All	303	228
2511-0156	15.6"	All	343	193
2511-0170	17.0"	All	338	270
2511-0185	18.5"	All	410	231
2511-0190	19.0"	All	379	303
2500-0215	21.5"	All	477	268
Notes	Dimensional Tolerance $\pm 0.5\text{mm}$ Specifications subject to change without notice.			

How to Apply the Protective Screen to your Product

1. Place the protective screen centered onto the touchscreen area and take note of the spacing before installation in step 4.
2. Make sure the unit screen is free of dust and fingerprints. Use a damp microfiber or lint-free cleaning cloth, or any cleaning wipes you might use for your laptop LCD display.
3. Remove the thin transparent backing from the protective screen.
Note: Use your finger on one of the corners of the protective screen to separate the backing from the protective screen and peel it off. This exposes the adhesive side of the protective screen.



4. Install the protective screen onto the touchscreen area as follows:
 - a. Position the protective screen (adhesive side down) as noted in step 1, in one of the corners of the unit's touchscreen area. Example Below:



- b. Slowly apply the protective screen onto the touchscreen, while avoiding forming air bubbles under the film. This may require the use of a soft cloth or plastic card (e.g. gift card, credit card) to apply even pressure as you install the protective screen across the touchscreen.



5. The protective screen may be removed and replaced as needed.