

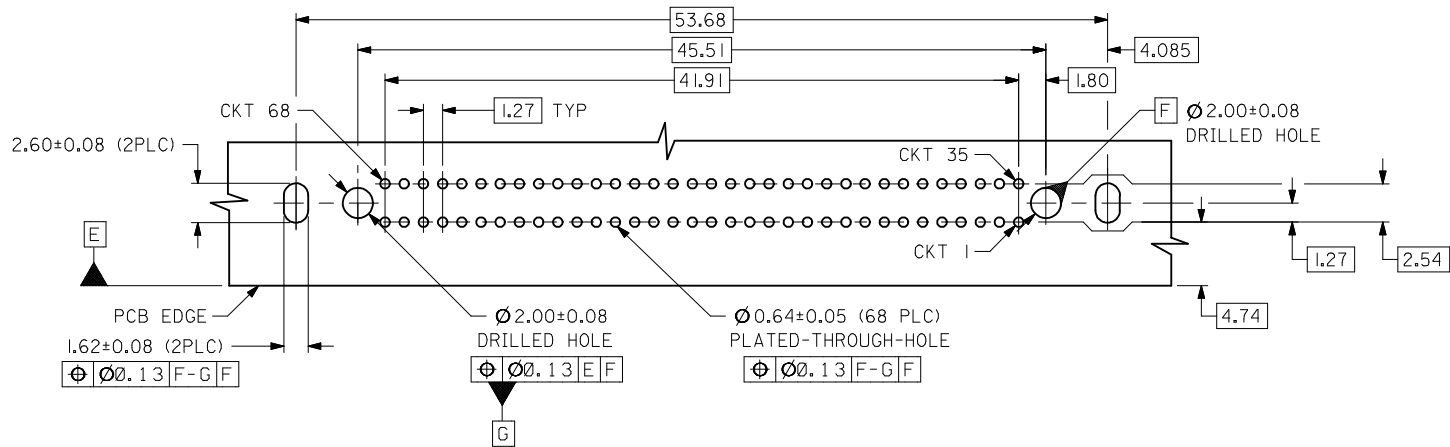
PART NO. (PACKED IN CARTON)	CKT SIZE	CONTACTS LUBRICATION
87537-8876	68	YES
87537-8877	68	NIL

OBS TIN/LEAD P/N EC NO: S2006-0729	DRW:MLONG 2006/02/27	QUALITY SYMBOLS ▽=0 ∇=2
	CHKD:SHONG 2006/02/27	
	APPR:KCLING 2006/02/28	
	REV	

	GENERAL TOLERANCES (UNLESS SPECIFIED)	
	mm	INCH
4 PLACES	± ---	± ---
3 PLACES	± ---	± ---
2 PLACES	± 0.25	± ---
1 PLACE	± ---	± ---
ANGULAR ± 3 °		
DRAFT WHERE APPLICABLE MUST REMAIN WITHIN DIMENSIONS		

DIMENSION STYLE MM ONLY	
DRAWN BY RSHAN	DATE 2003/11/03
CHECKED BY KCLING	DATE 2003/11/14
APPROVED BY SKTOH	DATE 2003/11/14
MATERIAL NO.	DOCUMENT NO.
SEE TABLE	SD-87537-032

SCALE NTS	DESIGN UNITS METRIC	THIRD ANGLE PROJECTION
TITLE EBBI, RECEPTACLE, CONN. 1.27MM CTR, 68 CKTS, BTB RVS B/M, 13MM HT., R/A		
MOLEX INCORPORATED		SHEET NO. 1 OF 2
THIS DRAWING CONTAINS INFORMATION THAT IS PROPRIETARY TO MOLEX INCORPORATED AND SHOULD NOT BE USED WITHOUT WRITTEN PERMISSION		

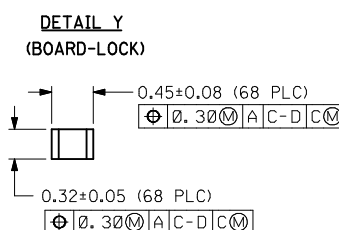
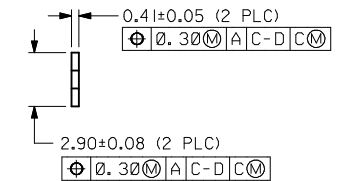
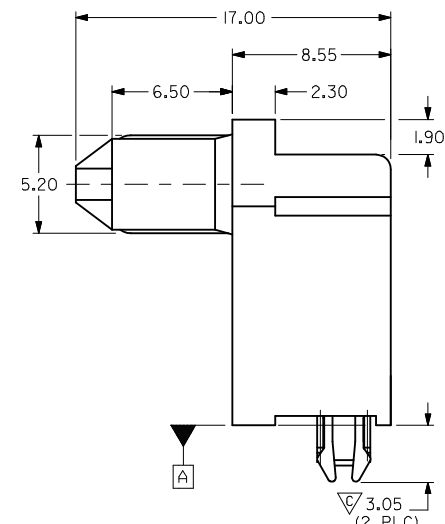
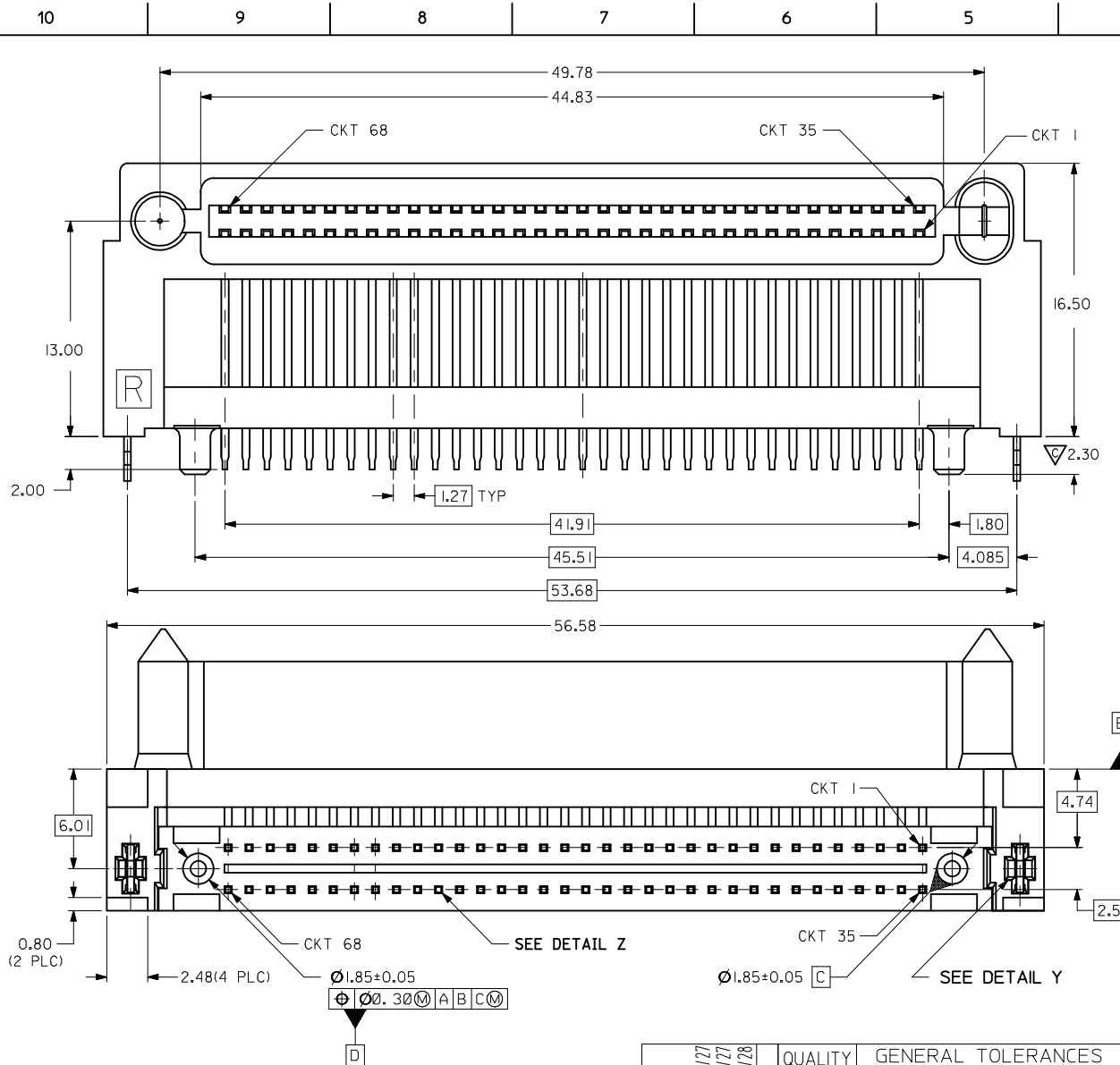


RECOMMENDED PC BOARD LAYOUT **COMPONENT SIDE**

NOTES:

- 1 MATERIALS:
HOUSING - HIGH TEMPERATURE THERMOPLASTIC, GLASS FILLED, UL94V-0, COLOR : BLACK
TERMINAL - COPPER ALLOY
- 2 PLATING:
0.76µM MIN. GOLD IN SELECTIVE CONTACT AREA AND 2.54µM MIN. TIN IN SOLDER TAIL AREA, BOTH OVER 1.27µM MIN. NICKEL.
- 3. PRODUCT SPECIFICATION : PS-87537-0001
- 4 RECOMMENDED P.C. BOARD THICKNESS IS 1.57+/-0.05MM.
- 5 CIRCUIT #58 TO BE RECESSED 0.50mm BEHIND ALL OTHER CONTACTS.
- 6 PART IS LUBRICATED AT TERMINAL CONTACTS TO MINIMISE UNMATE FORCE.

OBS TIN/LEAD P/N EC NO: S2006-0729 DRWN:MLONG 2006/02/27 CHKD:SHONG 2006/02/27 APPR:KCLING 2006/02/28	DESCRIPTION REV	QUALITY SYMBOLS ▽=0 ◻=0	GENERAL TOLERANCES (UNLESS SPECIFIED)		DIMENSION STYLE MM ONLY		SCALE NTS	DESIGN UNITS METRIC	THIRD ANGLE PROJECTION		
			mm	INCH	DRAWN BY RSHAN	DATE 2003/11/03	TITLE EBBI, RECEPTACLE, CONN. 1.27MM CTR, 68 CKTS, BTB RVS B/M, 13MM HT., R/A				
			4 PLACES ± --- ± ---	3 PLACES ± --- ± ---	CHECKED BY KCLING	DATE 2003/11/14	MOLEX INCORPORATED				
			2 PLACES ± 0.25 ± ---	1 PLACE ± --- ± ---	APPROVED BY SKTOH	DATE 2003/11/14	DOCUMENT NO. SD-87537-032				
		ANGULAR ± 3 °	DRAFT WHERE APPLICABLE MUST REMAIN WITHIN DIMENSIONS		MATERIAL NO. SEE TABLE		SHEET NO. 2 OF 2		THIS DRAWING CONTAINS INFORMATION THAT IS PROPRIETARY TO MOLEX INCORPORATED AND SHOULD NOT BE USED WITHOUT WRITTEN PERMISSION		



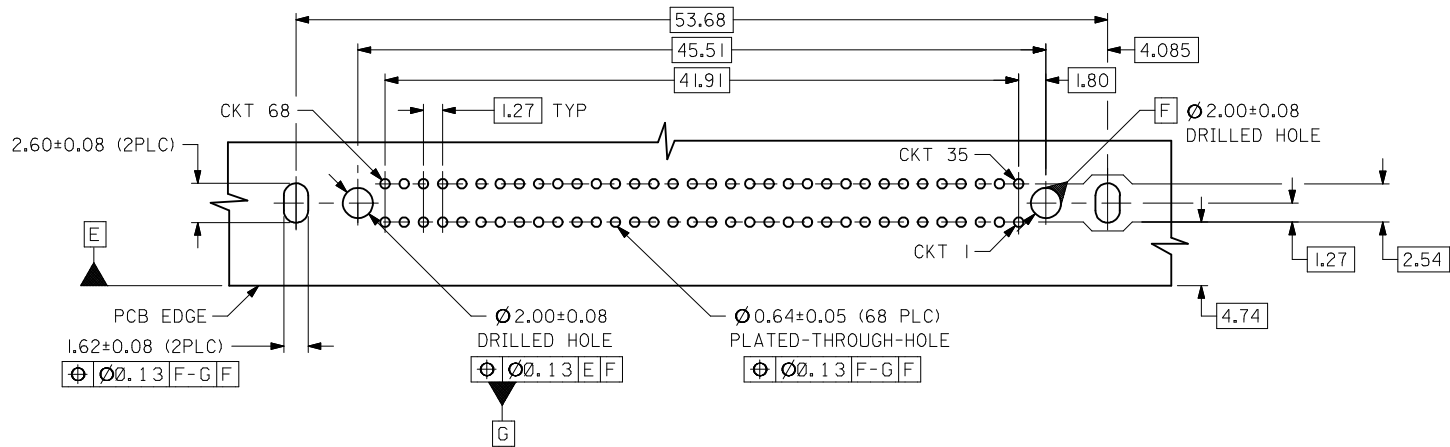
PART NO. (PACKED IN CARTON)	CKT SIZE	CONTACTS LUBRICATION
87537-8876	68	YES
87537-8877	68	NIL

OBS TIN/LEAD P/N EC NO: S2006-0729 DRWING: MONG 2006/02/27 CHKD: SHONG 2006/02/27 APPR: KCLING 2006/02/28	QUALITY SYMBOLS	GENERAL TOLERANCES (UNLESS SPECIFIED)	DIMENSION STYLE MM ONLY	SCALE NTS	DESIGN UNITS METRIC	THIRD ANGLE PROJECTION
	$\nabla = 0$					
	$\sphericalangle = 2$					
	REV					

4 PLACES	\pm ---	\pm ---
3 PLACES	\pm ---	\pm ---
2 PLACES	± 0.25	\pm ---
1 PLACE	\pm ---	\pm ---
ANGULAR $\pm 3^\circ$		
DRAFT WHERE APPLICABLE MUST REMAIN WITHIN DIMENSIONS		

DRAWN BY RSHAN	DATE 2003/11/03
CHECKED BY KCLING	DATE 2003/11/14
APPROVED BY SKTOH	DATE 2003/11/14
MATERIAL NO.	DOCUMENT NO.
SIZE A3	THIS DRAWING CONTAINS INFORMATION THAT IS PROPRIETARY TO MOLEX INCORPORATED AND SHOULD NOT BE USED WITHOUT WRITTEN PERMISSION

TITLE EBBI, RECEPTACLE, CONN. 1.27MM CTR, 68 CKTS, BTB RVS B/M, 13MM HT., R/A	
MOLEX INCORPORATED	
SEE TABLE	SD-87537-032
SHEET NO. 1 OF 2	



RECOMMENDED PC BOARD LAYOUT
 COMPONENT SIDE

NOTES:

- 1 MATERIALS:
HOUSING - HIGH TEMPERATURE THERMOPLASTIC, GLASS FILLED, UL94V-0, COLOR : BLACK
TERMINAL - COPPER ALLOY
- 2 PLATING:
0.76µM MIN. GOLD IN SELECTIVE CONTACT AREA AND
2.54µM MIN. TIN IN SOLDER TAIL AREA, BOTH
OVER 1.27µM MIN. NICKEL.
- 3. PRODUCT SPECIFICATION : PS-87537-0001
- 4 RECOMMENDED P.C. BOARD THICKNESS IS 1.57+/-0.05MM.
- 5 CIRCUIT #58 TO BE RECESSED 0.50mm BEHIND ALL OTHER CONTACTS.
- 6 PART IS LUBRICATED AT TERMINAL CONTACTS TO MINIMISE UNMATE FORCE.

OBS TIN/LEAD P/N EC NO: S2006-0729 DRWN:MLONG 2006/02/27 CHKD:SHONG 2006/02/27 APPR:KCLING 2006/02/28	DESCRIPTION REV	QUALITY SYMBOLS ▽=0 ◻=0	GENERAL TOLERANCES (UNLESS SPECIFIED)		DIMENSION STYLE MM ONLY		SCALE NTS	DESIGN UNITS METRIC	THIRD ANGLE PROJECTION		
			mm	INCH	DRAWN BY RSHAN	DATE 2003/11/03	TITLE EBBI, RECEPTACLE, CONN. 1.27MM CTR, 68 CKTS, BTB RVS B/M, 13MM HT., R/A				
			4 PLACES ± --- ± ---	3 PLACES ± --- ± ---	CHECKED BY KCLING	DATE 2003/11/14					
			2 PLACES ± 0.25 ± ---	1 PLACE ± --- ± ---	APPROVED BY SKTOH	DATE 2003/11/14					
		ANGULAR ± 3 °	DRAFT WHERE APPLICABLE MUST REMAIN WITHIN DIMENSIONS		MATERIAL NO. SEE TABLE	DOCUMENT NO. SD-87537-032	SHEET NO. 2 OF 2				
					SIZE A3	THIS DRAWING CONTAINS INFORMATION THAT IS PROPRIETARY TO MOLEX INCORPORATED AND SHOULD NOT BE USED WITHOUT WRITTEN PERMISSION					