

# RH-MF

## Bridge handles

Oval flat cross section, aluminium

METRIC



### MATERIAL

Anodised aluminium with oval flat cross section, ground surface, matte finish.

### STANDARD EXECUTIONS

Threaded blind holes.

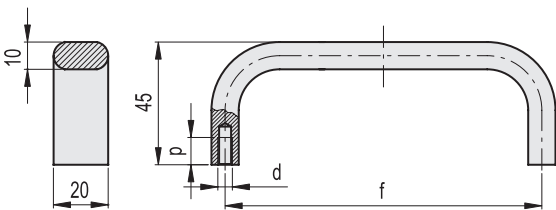
- **RHMF-01**: natural colour.
- **RHMF-04**: black colour.

### SPECIAL EXECUTIONS ON REQUEST

Different lengths.

### OTHER STANDARD EXECUTIONS AVAILABLE

Version RH-MF-CLEAN (see page 472).



METRIC

Code	Code	f	d	p	Δ
RHMF-20.120.01	RHMF-20.120.04	120	M5	10	85
RHMF-20.140.01	RHMF-20.140.04	140	M5	10	93
RHMF-20.180.01	RHMF-20.180.04	180	M5	10	116
RHMF-20.200.01	RHMF-20.200.04	200	M5	10	125
RHMF-20.350.01	RHMF-20.350.04	350	M6	12	193

Conversion Table 1 mm = 0.039 inch			
f			
mm	inch	mm	inch
100	3.94	180	7.09
120	4.72	200	7.87
140	5.51	250	9.84
150	5.91	350	13.78

# RH-EF

## Bridge handles

Oval flat cross section, stainless steel

METRIC



### MATERIAL

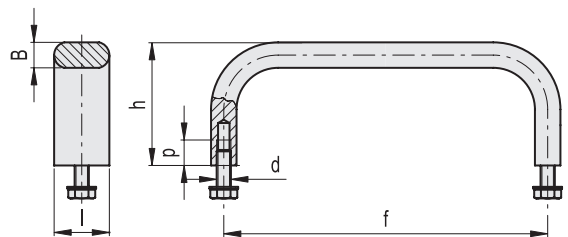
AISI 303 stainless steel, flat oval cross section, ground surface, semi-matte finish.

### STANDARD EXECUTION

Threaded holes for AISI 304 stainless steel screws and washers, included in the supply.

### SPECIAL EXECUTIONS ON REQUEST

- Handles with different lengths.
- Handles with ground and shotblasted surface, semi-matte finish obtained by electropolishing.



INOX STAINLESS STEEL METRIC

Code	f	d	p	B	h	l	Δ
RHEF-12.100.31	100	M5x10	10	8	40	12	105
RHEF-12.120.31	120	M5x10	10	8	40	12	118
RHEF-12.150.31	150	M5x10	10	8	40	12	138
RHEF-12.180.31	180	M5x10	10	8	40	12	158
RHEF-12.250.31	250	M5x10	10	8	40	12	205
RHEF-12.350.31	350	M5x10	10	8	40	12	271
RHEF-19.100.31	100	M6x12	12	10	45	19.5	220
RHEF-19.120.31	120	M6x12	12	10	45	19.5	256
RHEF-19.150.31	150	M6x12	12	10	45	19.5	279
RHEF-19.180.31	180	M6x12	12	10	45	19.5	339
RHEF-19.250.31	250	M6x12	12	10	45	19.5	434
RHEF-19.350.31	350	M6x12	12	10	45	19.5	573



Lift & Pull handles