

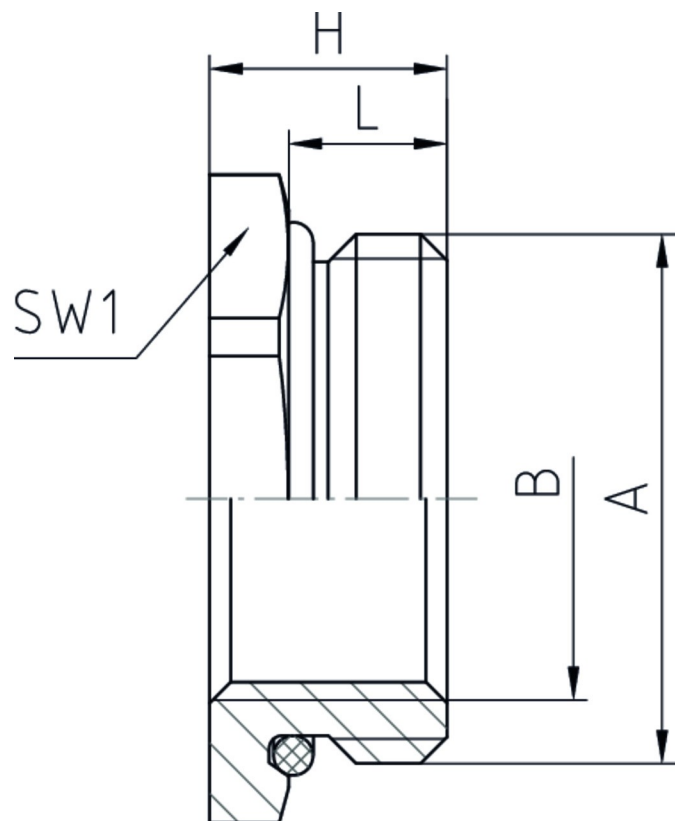
Reduction

| | |
|------------------------|--------------------------------|
| Reduction | Brass CuZn39Pb3, nickel-plated |
| O-ring | Nitrile rubber NBR |
| External thread | metric, as per EN 60423 |
| Internal thread | Pg as per DIN 40430 |




Properties

| | |
|--------------------------|--|
| | <ul style="list-style-type: none"> • adapter for reduction of metric to Pg-threaded holes |
| Temperature range | -40 °C +100 °C |
| Protection grade | max. IP68 dependent on the combination with other components |



Features

| A | B | L | SW1 | H | VPE | Part No. |
|---------|---------|---|-----|----|-----|-------------|
| M16x1,5 | Pg 7 | 5 | 17 | 8 | 100 | M16PG7/OM |
| M20x1,5 | Pg 9 | 6 | 22 | 9 | 100 | M20PG9/OM |
| M25x1,5 | Pg 9 | 7 | 27 | 10 | 100 | M25PG9/OM |
| M25x1,5 | Pg 11 | 7 | 27 | 10 | 100 | M25PG11/OM |
| M25x1,5 | Pg 13,5 | 7 | 27 | 10 | 100 | M25PG13/OM |
| M25x1,5 | Pg16 | 7 | 27 | 18 | 100 | M25PG16/OM* |
| M32x1,5 | Pg 13,5 | 8 | 34 | 11 | 50 | M32PG13/OM |
| M32x1,5 | Pg 16 | 8 | 34 | 11 | 50 | M32PG16/OM |

| A | B | L | SW1 | H |  VPE | Part No. |
|---------|-------|----|-----|----|--|------------|
| M32x1,5 | Pg 21 | 8 | 34 | 11 | 50 | M32PG21/OM |
| M40x1,5 | Pg 16 | 8 | 43 | 12 | 25 | M40PG16/OM |
| M40x1,5 | Pg 21 | 8 | 43 | 12 | 25 | M40PG21/OM |
| M40x1,5 | Pg 29 | 8 | 43 | 12 | 25 | M40PG29/OM |
| M50x1,5 | Pg 21 | 9 | 55 | 13 | 25 | M50PG21/OM |
| M50x1,5 | Pg 29 | 9 | 55 | 13 | 10 | M50PG29/OM |
| M50x1,5 | Pg 36 | 9 | 55 | 13 | 10 | M50PG36/OM |
| M63x1,5 | Pg 29 | 10 | 65 | 14 | 10 | M63PG29/OM |
| M63x1,5 | Pg 36 | 10 | 65 | 14 | 10 | M63PG36/OM |
| M63x1,5 | Pg 42 | 10 | 65 | 14 | 10 | M63PG42/OM |

* differing design