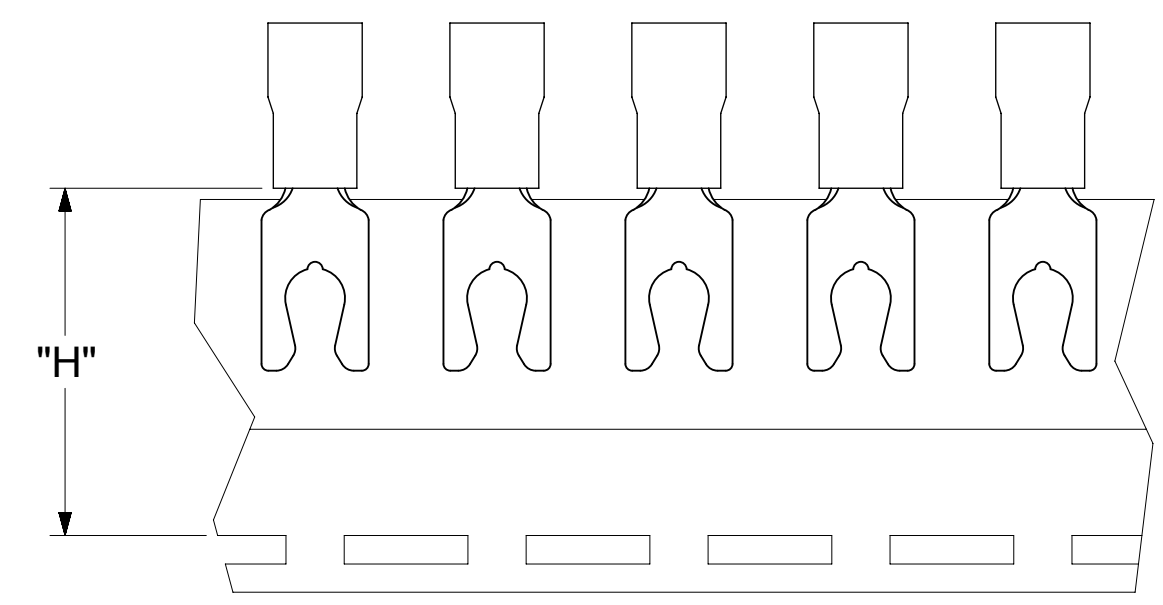
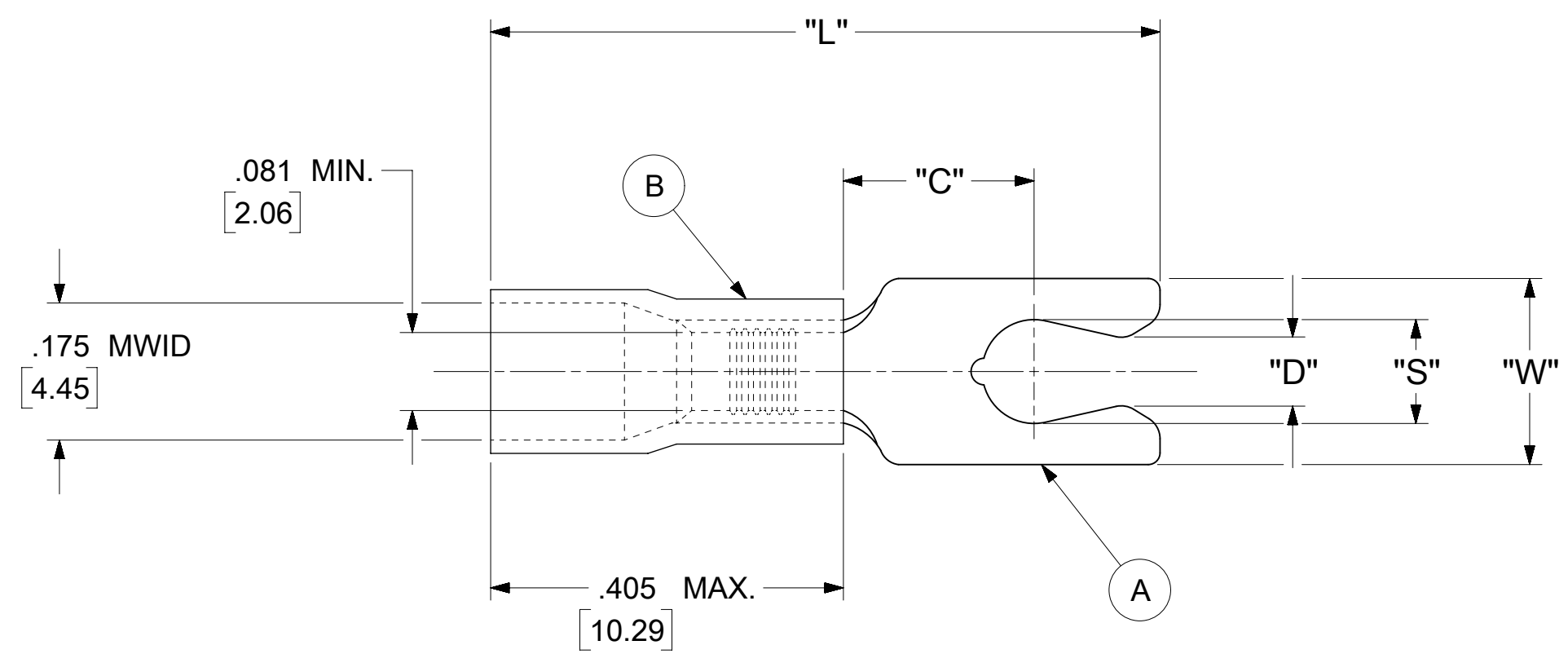


LOOSE PIECE		TAPE MOUNTED		SPECIFICATIONS						
MATERIAL NUMBER	ENGINEERING NUMBER	MATERIAL NUMBER	ENGINEERING NUMBER	STUD SIZE	"S" ±.005 [0.13]	"W" ±.010 [0.25]	"C" MIN.	"L" MAX.	"D" ±.005 [0.13]	"H"
190990025	BB-2707-05X	190990026	BB-2707-05XT	5	.127 [3.23]	.250 [6.35]	.230 [5.84]	.810 [20.57]	.105 [2.67]	.980 [24.89]
190990027	BB-2707-06X	190990028	BB-2707-06XT	6	.146 [3.71]	.250 [6.35]	.230 [5.84]	.810 [20.57]	.114 [2.90]	.980 [24.89]



NOTES:

- MATERIAL:
 - (A). TERMINAL: COPPER (STOCK THICKNESS .031±.001 [0.79])
PLATING: ELECTRO-TIN (.0003 MIN.)
 - (B). INSULATION: MOLDED PVC (BLUE)
- MWID: MAXIMUM WIRE INSULATION DIAMETER
- WIRE SIZE: 16 -14 AWG
1.0 -2.5 MM²
- "UL" LISTING #E32244
"CSA" LISTING #18689
- ALL DIMENSIONS IN INCHES/[MM].
- PARTS ARE ROHS COMPLIANT.
- DIMS. SHOWN ARE FOR REFERENCE ONLY.

SYMBOLS DIMENSION UNITS SCALE CURRENT REV DESC: MIGRATION TO ECTR/NX EC NO: 620958 DRWN: ABENJAMINLW 2019/07/16 CHK'D: GROJAS01 2019/07/19 APPR: JMACNEIL 2019/08/05 INITIAL REVISION: DRWN: JJ 1984/11/07 APPR: JMACNEIL 2019/08/05 DRAFT WHERE APPLICABLE MUST REMAIN WITHIN DIMENSIONS THIRD ANGLE PROJECTION DRAWING SERIES C-SIZE 19099	THIS DRAWING CONTAINS INFORMATION THAT IS PROPRIETARY TO MOLEX ELECTRONIC TECHNOLOGIES, LLC AND SHOULD NOT BE USED WITHOUT WRITTEN PERMISSION			molex SNAP SPADE TONGUE TERMINAL INSULKRIMP 200 SERIES																							
	GENERAL TOLERANCES (UNLESS SPECIFIED) <table border="1"> <tr> <th></th> <th>MM</th> <th>INCH</th> </tr> <tr> <td>4 PLACES ± --- ± ---</td> <td></td> <td></td> </tr> <tr> <td>3 PLACES ± --- ± 0.005</td> <td></td> <td></td> </tr> <tr> <td>2 PLACES ± 0.13 ± 0.01</td> <td></td> <td></td> </tr> <tr> <td>1 PLACE ± 0.25 ± ---</td> <td></td> <td></td> </tr> <tr> <td>0 PLACES ± --- ± ---</td> <td></td> <td></td> </tr> <tr> <td>ANGULAR TOL ± 0.5 °</td> <td></td> <td></td> </tr> </table>							MM	INCH	4 PLACES ± --- ± ---			3 PLACES ± --- ± 0.005			2 PLACES ± 0.13 ± 0.01			1 PLACE ± 0.25 ± ---			0 PLACES ± --- ± ---			ANGULAR TOL ± 0.5 °		
		MM	INCH																								
	4 PLACES ± --- ± ---																										
3 PLACES ± --- ± 0.005																											
2 PLACES ± 0.13 ± 0.01																											
1 PLACE ± 0.25 ± ---																											
0 PLACES ± --- ± ---																											
ANGULAR TOL ± 0.5 °																											
DIMENSION UNITS INCH/MM SCALE NTS																											
DIMENSION UNITS INCH/MM SCALE NTS																											

DOCUMENT STATUS	P1	RELEASE DATE	2019/08/05	20:30:06
-----------------	----	--------------	------------	----------

