

Customer Information Sheet

DRAWING No.: M22-533XX05R

IF IN DOUBT - ASK

©

NOT TO SCALE

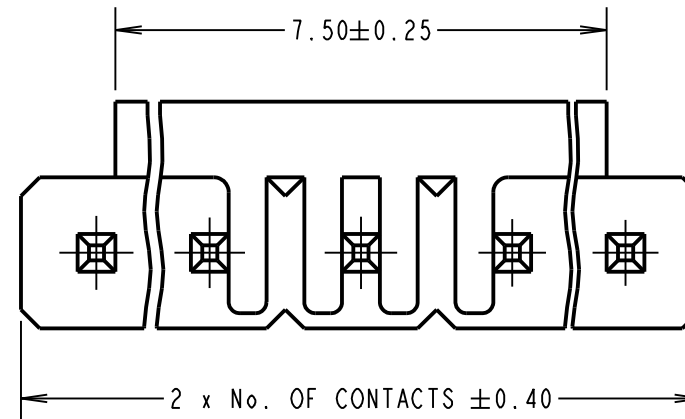
THIRD ANGLE PROJECTION

ALL DIMENSIONS IN mm

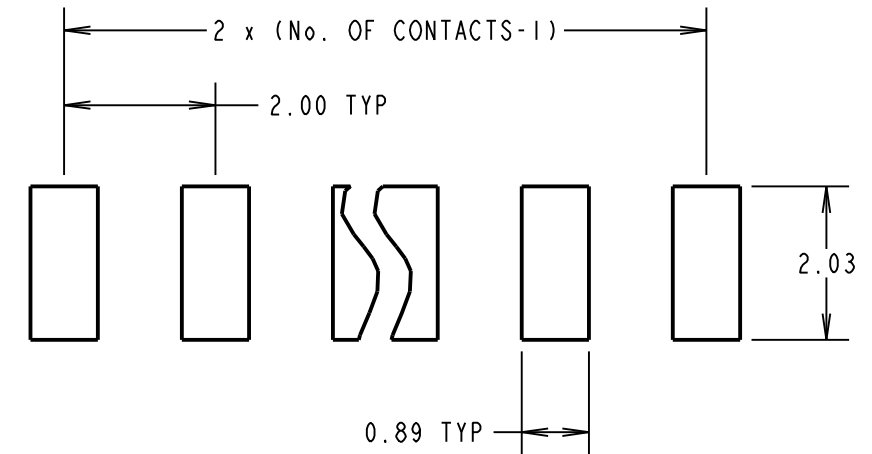
ORDER CODE:

M22-533XX05R

No. OF CONTACTS: _____
02, 03, 04, 05, 06, 08



RECOMMENDED PAD LAYOUT - TOLERANCE ±0.05mm



SPECIFICATION:

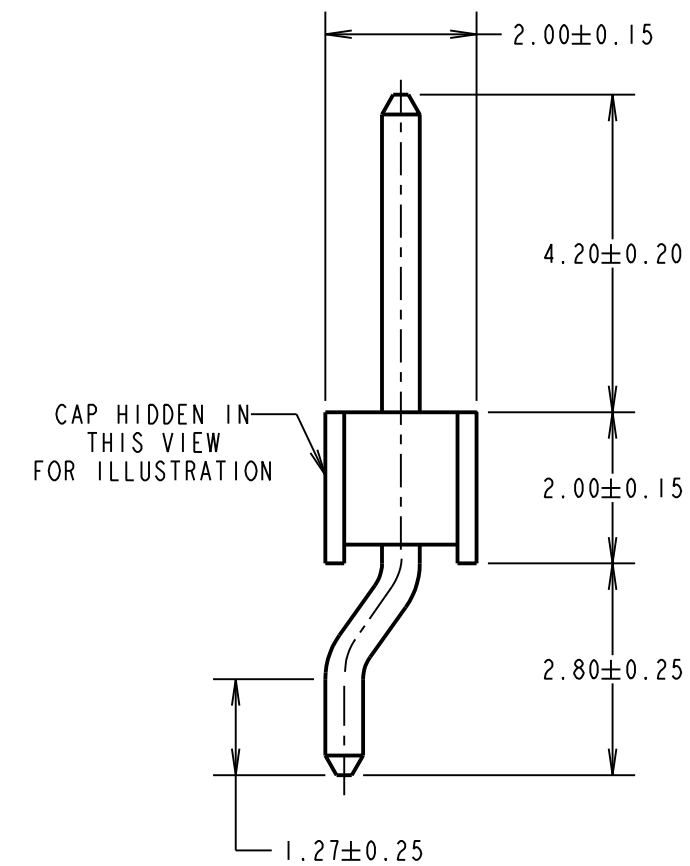
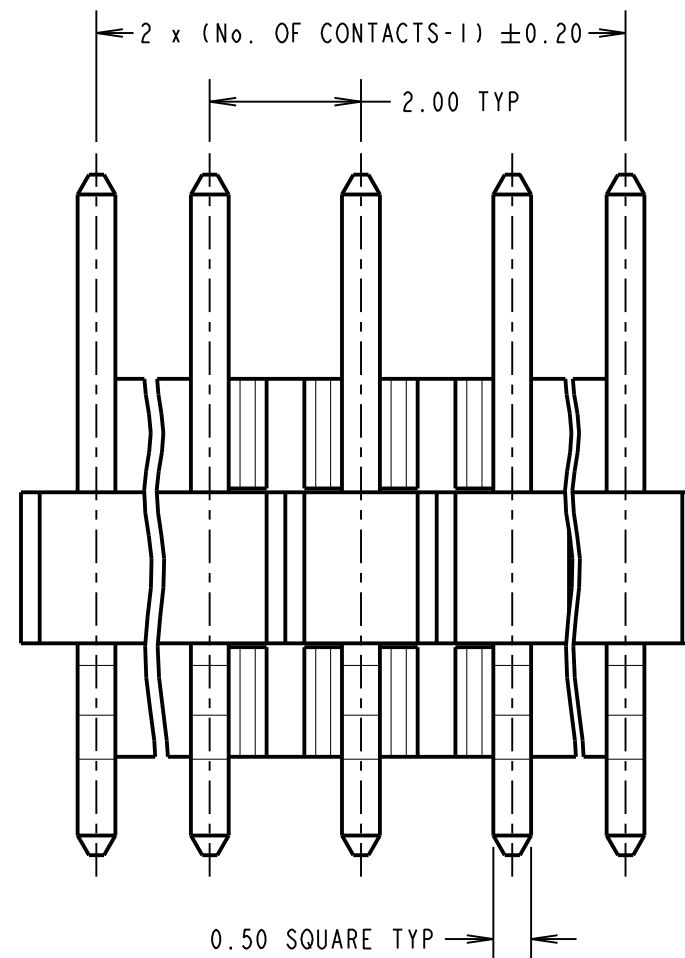
MATERIAL:
MOULDING = PA9T UL94V-0, BLACK
CONTACT = BRASS
FINISH:
CONTACT = GOLD FLASH OVER NICKEL
FOR COMPLETE SPECIFICATION, SEE COMPONENT SPECIFICATION C018XX (LATEST ISSUE)

Active products:

M22-5330205R
M22-5330305R
M22-5330505R
M22-5330605R
M22-5330805R

OBSOLETE

All other size/finish combinations not listed above



NOTES:

- FOR LOOSE PACKED PART, SEE DRAWING M22-533XX05.
- PRODUCT IS TO BE TAPE AND REELED IN GENERAL ACCORDANCE WITH EIA-481 (ELECTRONIC INDUSTRIES ASSOCIATION).
- SEE NEXT SHEET FOR TAPE DETAILS.

HARWIN

www.harwin.com
technical@harwin.com

THIS DRAWING AND ANY INFORMATION OR DESCRIPTIVE MATTER SET OUT HEREON ARE CONFIDENTIAL AND COPYRIGHT PROPERTY OF THE HARWIN GROUP AND MUST NOT BE DISCLOSED, LOANED, COPIED OR USED FOR MANUFACTURING, TENDERING OR FOR ANY OTHER PURPOSE WITHOUT THEIR WRITTEN PERMISSION.

TOLERANCES

X. = ±1mm
X.X = ±0.50mm
X.XX = ±0.20mm
X.XXX = ±0.01mm
ANGLES = ±5°
UNLESS STATED

MATERIAL:

SEE ABOVE

FINISH:

SEE ABOVE

S/AREA:

mm²

TITLE:

2.00mm PITCH SIL HORIZONTAL SMT PIN HEADER ASSEMBLY IN T&R

DRAWING NUMBER:

M22-533XX05R

SHT

3 OF 4

MGP	6	11.01.22	31219
NAME	ISS.	DATE	CN/CO
APPROVED: MGP			
CHECKED: MR			
DRAWN: S.BENNETT			
CUSTOMER REF.:			
ASSEMBLY DRG:			

Customer Information Sheet

DRAWING No.: M22-533XX05R

IF IN DOUBT - ASK

©

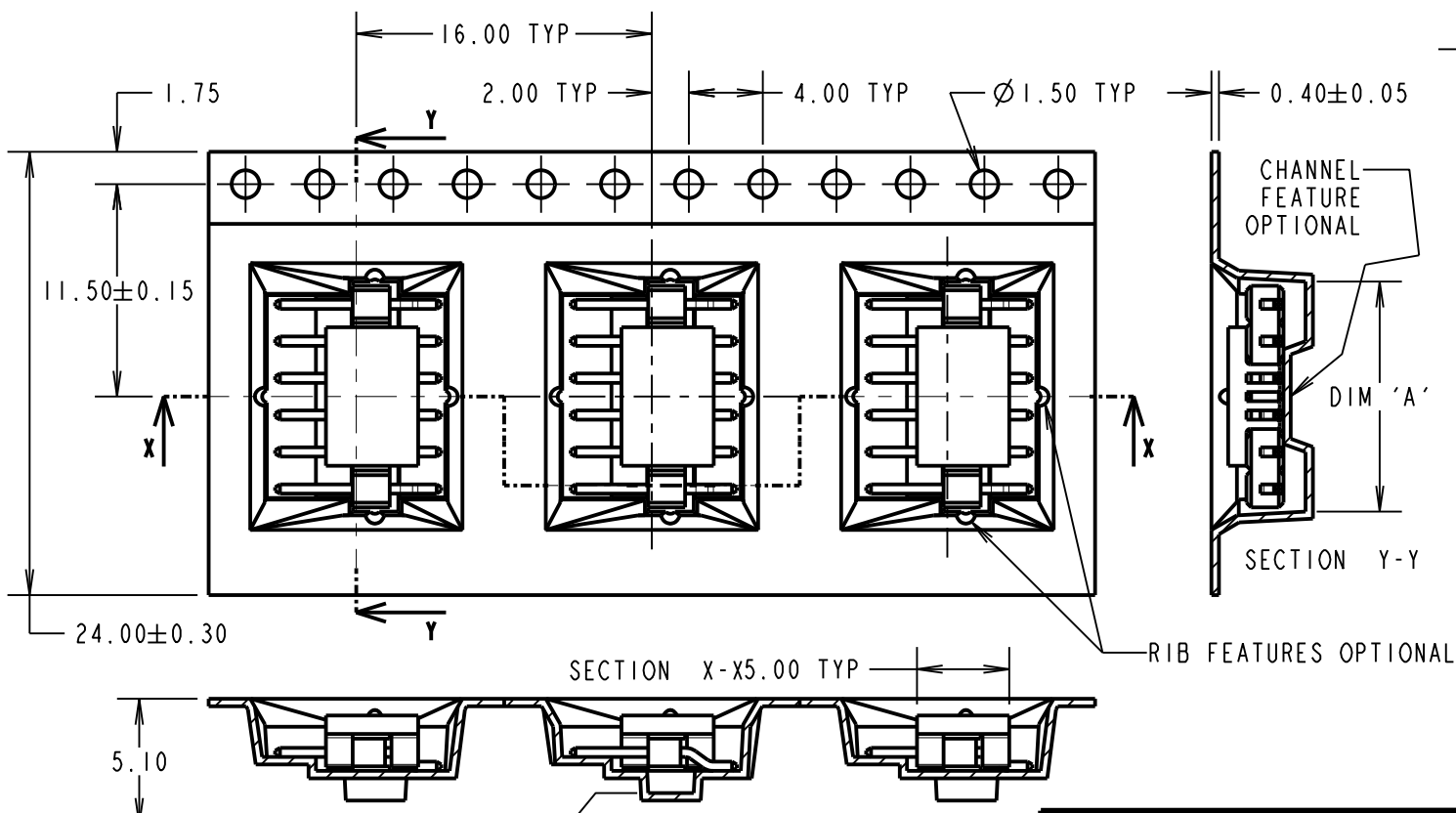
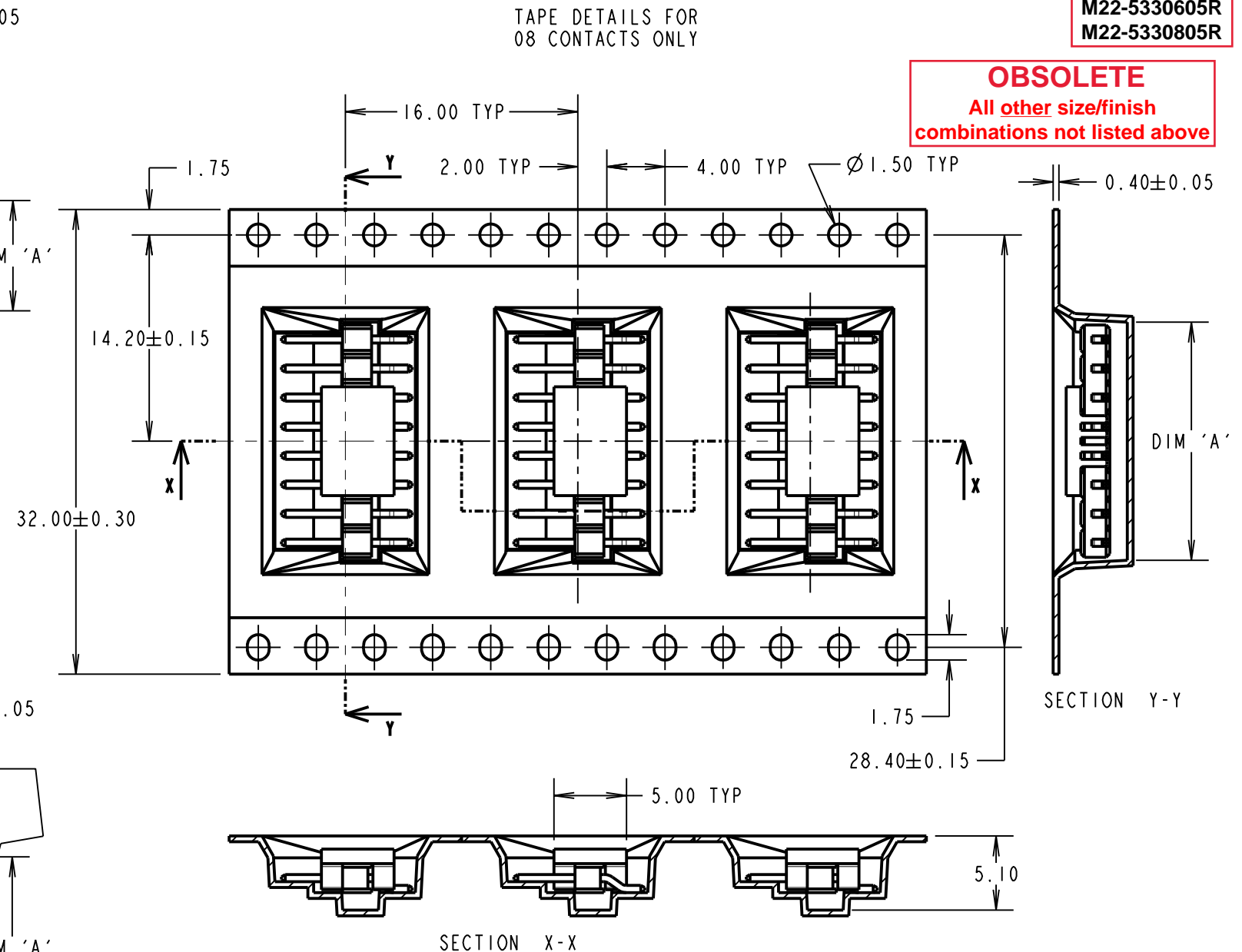
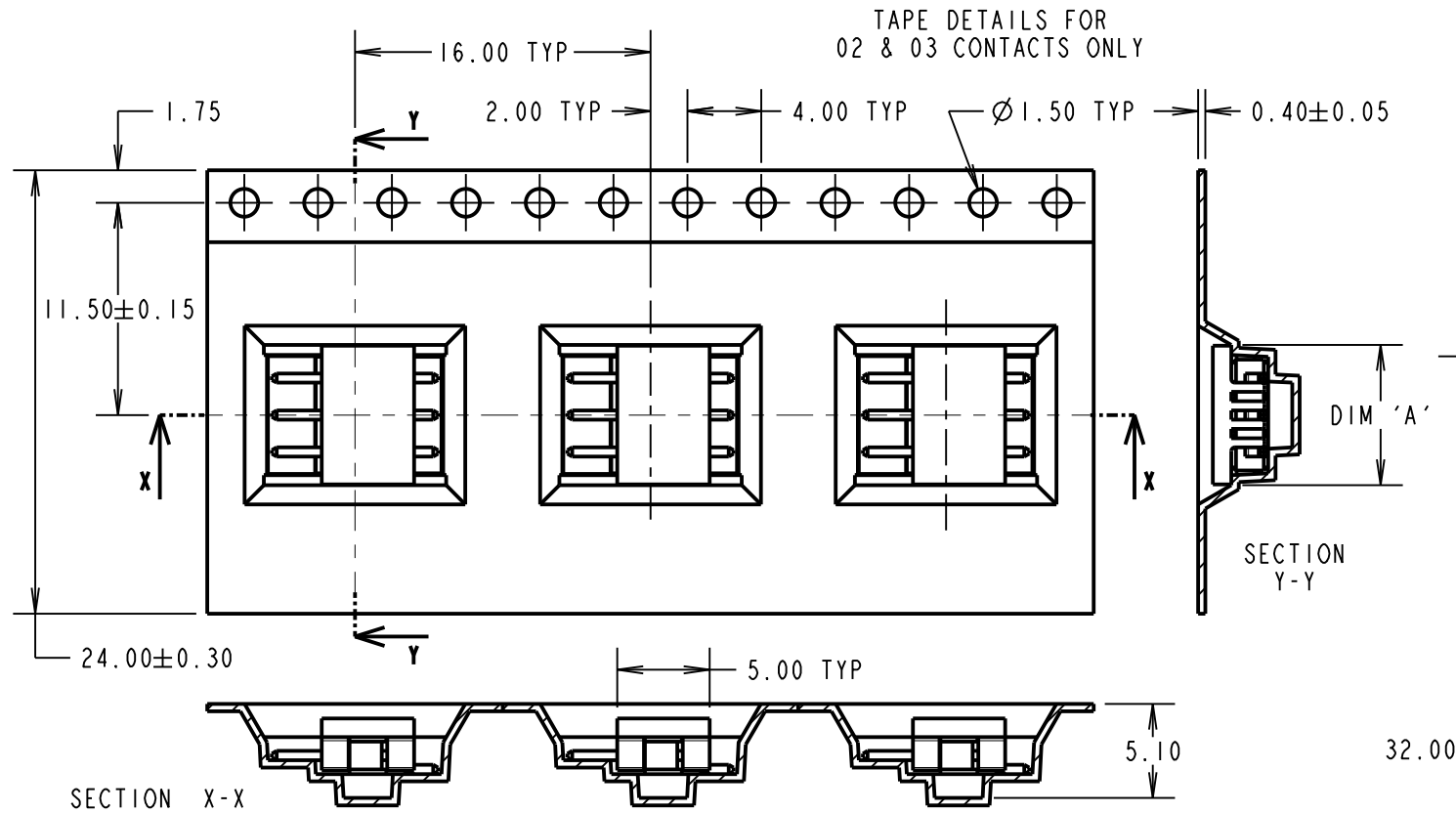
NOT TO SCALE

THIRD ANGLE PROJECTION

ALL DIMENSIONS IN mm

Active products:
M22-5330205R
M22-5330305R
M22-5330505R
M22-5330605R
M22-5330805R

OBSOLETE
All other size/finish combinations not listed above



ORDER CODE:
M22-533XX05R
No. OF CONTACTS: 02, 03, 04, 05, 06, 08

PART No.	DIM 'A'
M22-5330205R	7.60
M22-5330305R	8.40
M22-5330405R	10.40
M22-5330505R	12.50
M22-5330605R	16.40

MGP	6	11.01.22	31219
NAME	ISS.	DATE	CN/CO
APPROVED: MGP			
CHECKED: MR			
DRAWN: S.BENNETT			
CUSTOMER REF.:			
ASSEMBLY DRG:			

HARWIN
www.harwin.com
technical@harwin.com

THIS DRAWING AND ANY INFORMATION OR DESCRIPTIVE MATTER SET OUT HEREON ARE CONFIDENTIAL AND COPYRIGHT PROPERTY OF THE HARWIN GROUP AND MUST NOT BE DISCLOSED, LOANED, COPIED OR USED FOR MANUFACTURING, TENDERING OR FOR ANY OTHER PURPOSE WITHOUT THEIR WRITTEN PERMISSION.

TOLERANCES
X. = ±1mm
X.X = ±0.50mm
X.XX = ±0.20mm
X.XXX = ±0.01mm
ANGLES = ±5°
UNLESS STATED

MATERIAL: SEE ABOVE
FINISH: SEE ABOVE
S/AREA: mm²

TITLE:
2.00mm PITCH SIL HORIZONTAL SMT PIN HEADER ASSEMBLY IN T&R
DRAWING NUMBER:
M22-533XX05R
SHT 4 OF 4