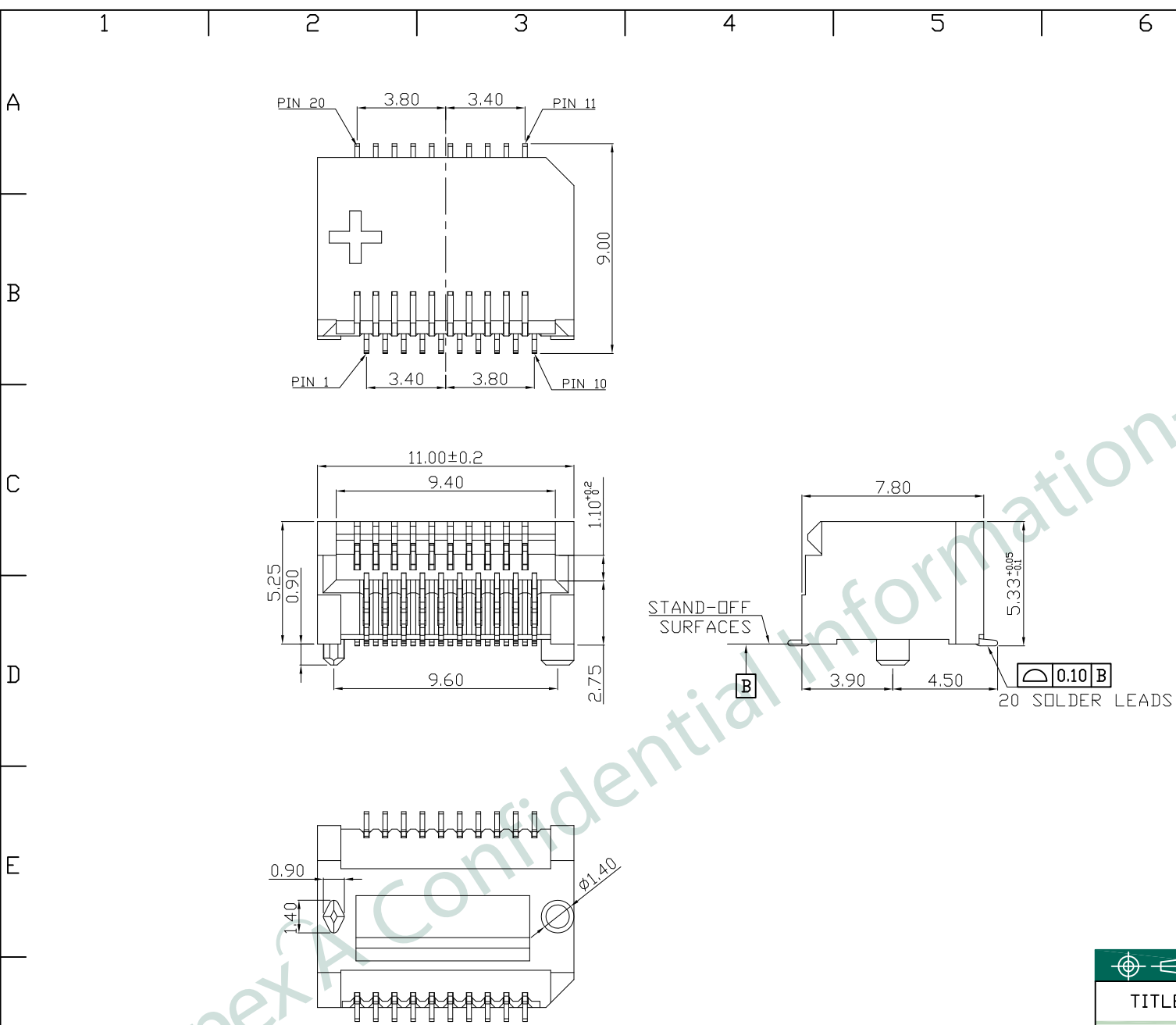


| REV. | DATE | DESCRIPTION |
|------|--------------|-------------|
| 01 | Jul. 05, '18 | 1st RELEASE |
| | | |
| | | |

- NOTES:
- MATERIAL:
HOUSING: LCP, UL94V-0, BLACK
CONTACT: C5210R-EH, T=0.20mm,
Au 30μ" PLATING
 - DURABILITY TEST: 100 CYCLES MIN.
 - SPECIFICATION:
DIELECTRIC STRENGTH: AC 300V/MINUTE
INSULATOR RESISTANCE: 500 Mohm MIN.
CONTACT RESISTANCE: 40 mohm MAX.
OPERATING TEMPERATURE: -40°C~+85°C
 - UNSPECIFIED TOLERANCE: .XX ±0.25
.XXX ±0.10

RoHS Compliant



| PART NO | | KSFP-N-PSM0-2003 | | |
|----------|---|------------------|--------------|--------|
| TITLE | SFP+ CONNECTOR, PITCH 0.80mm, 20 PIN SMT TYPE | | | |
| REV : 01 | | | | |
| UNIT | DRAWN | CHKD | DATE | SHEET |
| mm[inch] | CINDY | VINCENT | Jul. 05, '18 | 1 of 2 |

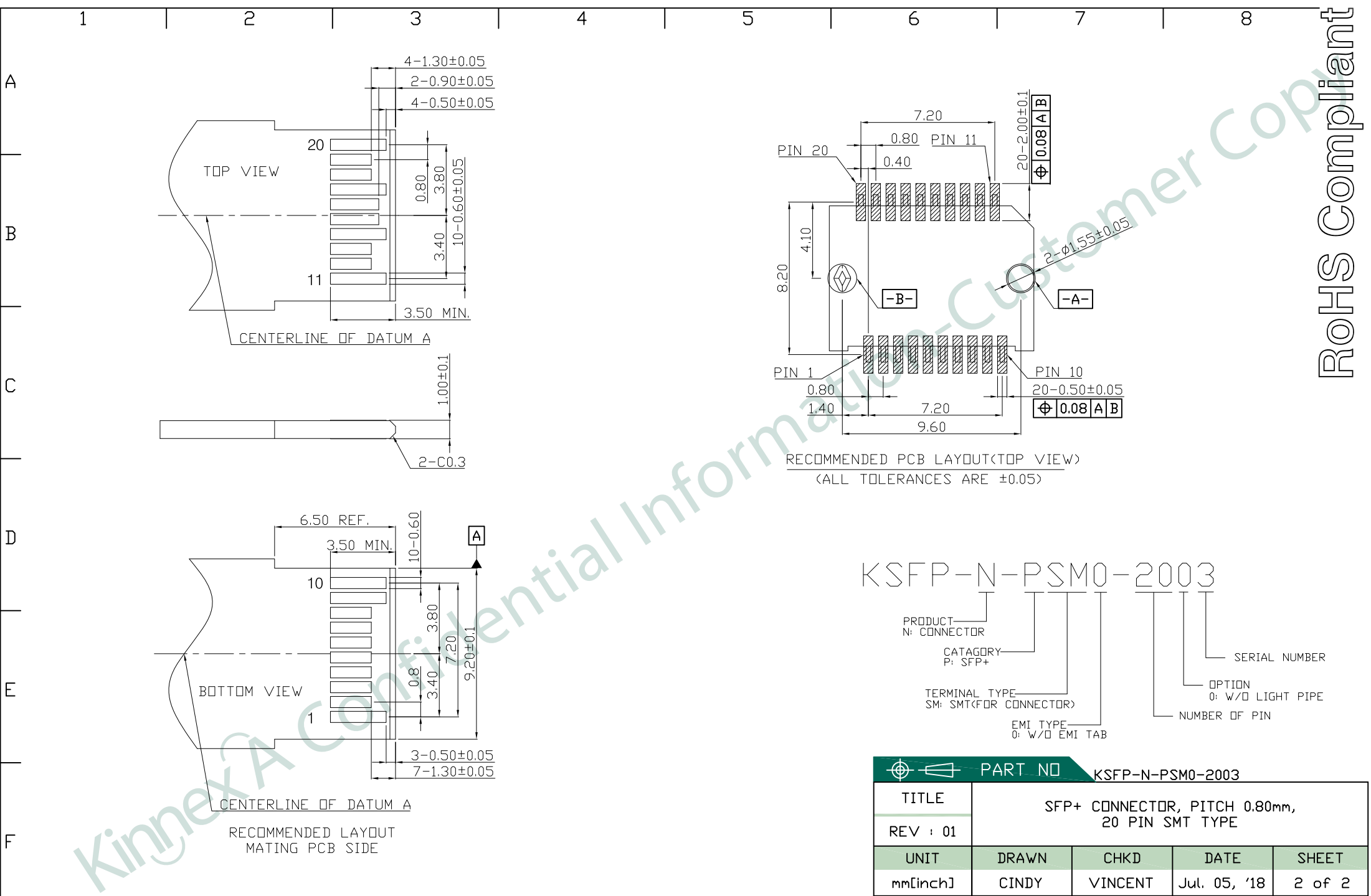
DWG NO KSFP-N-PSM0-2003

KinnexA, INC. 8F, No. 172, CHENG TEH ROAD SEC. 4, TAIPEI 11167, TAIWAN



PRELIMINARY RELEASE SUBJECT TO CHANGE

※ THIS DRAWING IS A CONTROLLED DOCUMENT ※



| | | | | |
|----------|---|------------------|--------------|--------|
| PART NO | | KSFP-N-PSM0-2003 | | |
| TITLE | SFP+ CONNECTOR, PITCH 0.80mm, 20 PIN SMT TYPE | | | |
| REV : 01 | | | | |
| UNIT | DRAWN | CHKD | DATE | SHEET |
| mm[inch] | CINDY | VINCENT | Jul. 05, '18 | 2 of 2 |