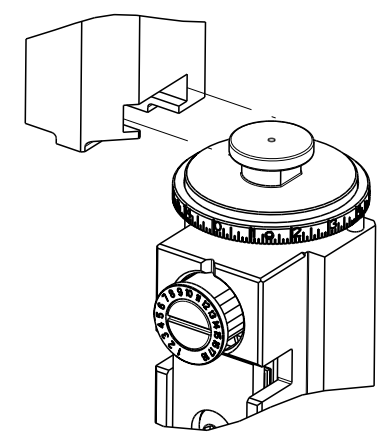


| PART NUMBER | REVISION | DESCRIPTION | FEED TYPE |
|-------------|----------|----------------------------------|------------|
| 2151505-1 | B | FINE CRIMP HEIGHT ADJUST | MECHANICAL |
| 2151505-2 | C | FINE CRIMP HEIGHT ADJUST | PNEUMATIC |
| 7-2151505-1 | B | MECHANICAL AND CRIMP TOOLING KIT | MECHANICAL |
| 7-2151505-2 | C | PNEUMATIC AND CRIMP TOOLING KIT | PNEUMATIC |
| 7-2151505-7 | A | CRIMP TOOLING KIT | - |

ATLANTIC VERSION TERMINATOR INTERFACE ADAPTER



| LOC | DIST | REV | DESCRIPTION | DATE | OWN | APVD |
|-----|------|-----|---------------|-----------|-----|------|
| A | 66 | B | ECR-18-006661 | 02MAY2018 | MEH | JDG |
| | | B1 | ECR-18-009765 | 22JUN2018 | KH | TE |
| | | C | ECR-20-010546 | 24JUL2020 | FZ | RK |
| | | C1 | ECR-21-004184 | 09APR2021 | FJ | RK |

| APPLICATOR DATA | | |
|-----------------|----------------|------|
| CRIMP | SIZE | TYPE |
| WIRE | 2.64 mm [.104] | F |
| INSUL | 3.51 mm [.138] | OV |

APPLICATOR INSTRUCTIONS
408-35042

| | | | |
|---|-----------------|------------------------------|-----------------|
| TERMINAL DATA: KOSTAL TERMINAL KOSTAL CRIMP SPECIFICATION | | | |
| TERMINAL NAME: TERMINAL KOSTAL SLK2.8 | | | |
| WIRE STRIP LENGTH | | INSULATION DIAMETER RANGE | |
| 3.80-4.40 mm [.150-.173 IN] | | Ø2.50-3.00 mm [.098-.118 IN] | |
| TERMINAL APPLICATION SPECIFICATION | | | |
| TERMINALS APPLIED | | | |
| TE TERMINAL | KOSTAL TERMINAL | TE TERMINAL | KOSTAL TERMINAL |
| 1572728-1 | 1 01 40 49910 0 | 2113379-1 | 2 21 24 47298 0 |
| 1572728-2 | 1 01 24 49910 0 | 2113379-2 | 2 21 25 47298 0 |
| 1572728-3 | 1 01 25 49910 0 | 2113379-3 | 2 21 40 47298 0 |

| | | | |
|---|-----------------|------------------------------|-----------------|
| TERMINAL DATA: KOSTAL TERMINAL KOSTAL CRIMP SPECIFICATION | | | |
| TERMINAL NAME: TERMINAL KOSTAL SLK2.8 | | | |
| WIRE STRIP LENGTH | | INSULATION DIAMETER RANGE | |
| 3.80-4.40 mm [.150-.173 IN] | | Ø2.50-3.00 mm [.098-.118 IN] | |
| TERMINAL APPLICATION SPECIFICATION | | | |
| TERMINALS APPLIED | | | |
| TE TERMINAL | KOSTAL TERMINAL | TE TERMINAL | KOSTAL TERMINAL |
| 1572728-4 | 1 01 40 49910 5 | 2113379-4 | 2 21 40 47298 5 |
| 1572728-5 | 1 01 24 49910 5 | 2113379-5 | 2 21 24 47298 5 |
| 1572728-6 | 1 01 25 49910 5 | 2113379-6 | 2 21 25 47298 5 |

| WIRE SIZE | CRIMP HEIGHT mm [INCH] | CRIMP HEIGHT REFERENCE SETTING |
|-----------|----------------------------|--------------------------------|
| 14 AWG | 1.57+/-0.03 [.062+/-0.001] | 5.9 |
| 1.50mm2 | 1.47+/-0.03 [.058+/-0.001] | 6.9 |
| 16 AWG | 1.39+/-0.03 [.055+/-0.001] | 7.8 |

| WIRE SIZE | CRIMP HEIGHT mm [INCH] | CRIMP HEIGHT REFERENCE SETTING |
|-----------|----------------------------|--------------------------------|
| 2.50mm2 | 1.75+/-0.03 [.069+/-0.001] | 4.2 |
| 2.00mm2 | 1.65+/-0.03 [.065+/-0.001] | 5.2 |

| | | | | | | | |
|---|-----|-----|-----|-----|-------------|-------------------------------------|-----|
| - | 1 | - | 1 | - | 2119641-1 | FEED CAM, AIR FEED | 248 |
| - | 1 | 1 | 1 | 1 | 2119082-8 | CAM, SNAIL, INSULATION ADJUSTMENT | 244 |
| - | 1 | 1 | 1 | 1 | 2079764-1 | WASHER, WAVE SPRING, CREST-TO-CREST | 243 |
| - | 1 | 1 | 1 | 1 | 2119083-1 | RETAINER, INSULATION DIAL | 242 |
| - | 1 | 1 | 1 | 1 | 7-18023-7 | SCR, SKT HD CAP M3 X 4.0 | 241 |
| - | - | 1 | - | 1 | 2119580-1 | MECHANICAL FEED ASSEMBLY | 239 |
| - | 1 | - | 1 | - | 2844940-1 | AIR FEED MODULE | 238 |
| - | REF | REF | REF | REF | 994970-2 | COUNTER, MAGNETIC | 164 |
| - | 1 | 1 | 1 | 1 | 2844908-1 | SCREW, LOCKING | 99 |
| - | 1 | 1 | 1 | 1 | 2844907-1 | POST, LOCKING | 98 |
| - | 1 | 1 | 1 | 1 | 455888-5 | SPACER, CRIMPER | 82 |
| - | 1 | 1 | 1 | 1 | 1803607-3 | DOCUMENTATION PACKAGE | 71 |
| - | 1 | 1 | 1 | 1 | 2119740-1 | TAG, IDENTIFICATION | 67 |
| - | 2 | 2 | 2 | 2 | 2168078-1 | SCREW, DRIVE, RH, RoHS, 2 x .188 | 66 |
| - | 1 | 1 | 1 | 1 | 2168083-2 | SCR, SKT HD CAP, RoHS, M4 X 8.0 | 60 |
| - | 1 | 1 | 1 | 1 | 5-18022-5 | SCR, HEX HD CAP, M4 X 6.0 | 59 |
| - | 1 | 1 | 1 | 1 | 1338685-1 | PAWL, FEED | 56 |
| - | 4 | 4 | 4 | 4 | 2168083-3 | SCR, SKT HD CAP, RoHS, M4 X 12.0 | 54 |
| - | 2 | 2 | 2 | 2 | 2168083-8 | SCR, SKT HD CAP, RoHS, M4 X 16 | 53 |
| - | 1 | 1 | 1 | 1 | 5018030-1 | NUT, HEX, REG, RoHS, M3 | 52 |
| - | 1 | 1 | 1 | 1 | 811242-5 | BUMPER, HOLD DOWN | 51 |
| - | 1 | 1 | 1 | 1 | 690753-2 | SPACER, TONKER | 50 |
| - | 1 | 2 | 1 | 2 | 18023-9 | SCR, SKT HD CAP M4 X 6.0 | 49 |
| - | - | 1 | - | 1 | 2119652-1 | FEED CAM, PRE FEED | 48 |
| - | - | 1 | - | 1 | 2119653-1 | FEED CAM, POST FEED | 47 |
| - | 1 | 1 | 1 | 1 | 1803583-9 | APPLICATOR BASIC ASSEMBLY, SF | 46 |
| - | 1 | 1 | 1 | 1 | 1803515-1 | RAM ASSEMBLY, SF ATLANTIC | 44 |
| - | 1 | 1 | 1 | 1 | 1803602-1 | SCR, BHSC, RoHS (M8 X 25) | 41 |
| - | 1 | 1 | 1 | 1 | 1752356-1 | SUPPORT, TERMINAL | 34 |
| - | 2 | 2 | 2 | 2 | 2079383-5 | SCR, BHSC, RoHS (M4 X 20) | 33 |
| - | 2 | 2 | 2 | 2 | 3-2844962-0 | SPACER, CYLINDRICAL, STRIP GUIDE | 30 |
| - | 1 | 1 | 1 | 1 | 2844992-4 | ASSEMBLY, STRIP GUIDE | 29 |
| - | 1 | 1 | 1 | 1 | 1-455888-0 | SPACER, CRIMPER | 28 |
| - | 1 | 1 | 1 | 1 | 240792-1 | DRAG, TERMINAL | 25 |
| - | 1 | 1 | 1 | 1 | 1320928-2 | STRIP GUIDE | 24 |
| - | 1 | 1 | 1 | 1 | 2168083-2 | SCR, SKT HD CAP, RoHS, M4 X 8.0 | 21 |
| - | 2 | 2 | 2 | 2 | 1-18028-2 | WASHER, FLAT, REG M4 | 20 |
| - | 1 | 1 | 1 | 1 | 2119533-1 | STRIPPER, SIDE FEED | 19 |
| - | 1 | 1 | 1 | 1 | 2119806-1 | INSERT, SHEAR | 13 |
| - | 1 | 1 | 1 | 1 | 3-22280-3 | SPRING, COMPRESSION | 12 |
| - | 1 | 1 | 1 | 1 | 1-356885-4 | STOP, SHEAR | 11 |
| - | 1 | 1 | 1 | 1 | 2119805-1 | SHEAR HOLDER, FRONT | 10 |
| - | 1 | 1 | 1 | 1 | 318707-1 | FLOATING SHEAR, FRONT | 9 |
| - | 1 | 2 | 2 | 1 | 1803055-2 | ANVIL, COMBINATION | 8 |
| - | 1 | 1 | 1 | 1 | 1-240641-4 | SPACER | 7 |
| - | - | - | - | - | - | - | 6 |
| - | 1 | 1 | 1 | 1 | 2119757-9 | DEPRESSOR, SHEAR | 5 |
| - | 1 | 1 | 1 | 1 | 1-238011-7 | BLOCK, CRIMPER SPACER | 4 |
| - | 1 | 2 | 2 | 1 | 1-1633963-2 | CRIMPER, INSULATION OVERLAP PREMIUM | 3 |
| - | 1 | 1 | 1 | 1 | 455888-3 | SPACER, CRIMPER | 2 |
| - | 1 | 2 | 2 | 1 | 9-1633305-1 | CRIMPER, WIRE PREMIUM | 1 |
| - | - | - | - | - | - | - | - |

- 1 RECOMMENDED SPARE PARTS
- 2 REFER TO SUPPLIED INSTRUCTION SHEET FOR CLEANING, LUBRICATION AND STORAGE OF APPLICATOR.
- 3 APPLY PART NUMBER 2-23419-6 LOCTITE TO THREADS OF ITEM 242.
- 4 CRIMP HEIGHT REFERENCE SETTING WAS THE SETTING USED WHEN THE APPLICATOR WAS QUALIFIED AT THE FACTORY. ADJUSTMENT MAY BE NECESSARY WHEN RUNNING APPLICATOR IN THE FIELD.
- 5. UNLESS SPECIFIED OTHERWISE TORQUE VALUES SHALL BE USED PER DOCUMENT, 101-35000.

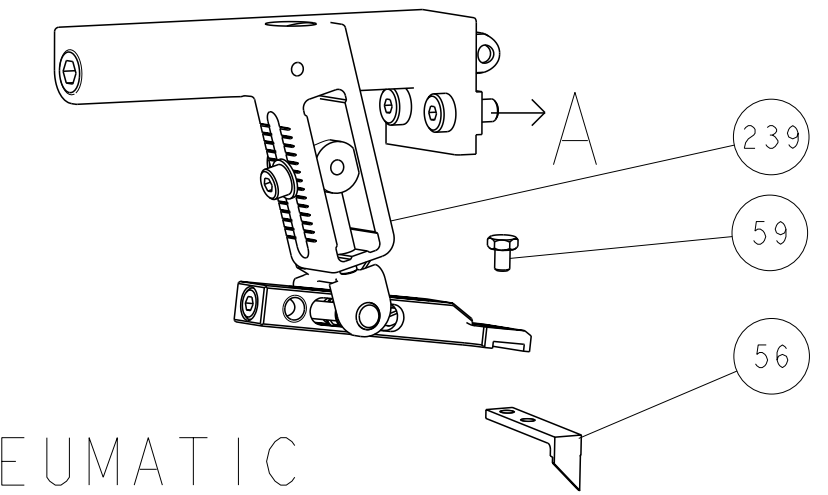
***WARNING**
ON INSTALLATION, SET WIRE DISC TO CRIMP HEIGHT REFERENCE SETTING FOR LARGEST WIRE SIZE. CRIMP HEIGHT REFERENCE SETTINGS GREATER THAN THE VALUE SHOWN MAY CAUSE DAMAGE TO THE CRIMP TOOLING, REFER TO THE INSTRUCTION SHEET FOR PROPER SETUP AND ADJUSTMENTS.

ATLANTIC VERSION
Shown on sheets 1 of 4 & 2 of 4
(Pacific version shown on sheets 3 of 4 & 4 of 4)

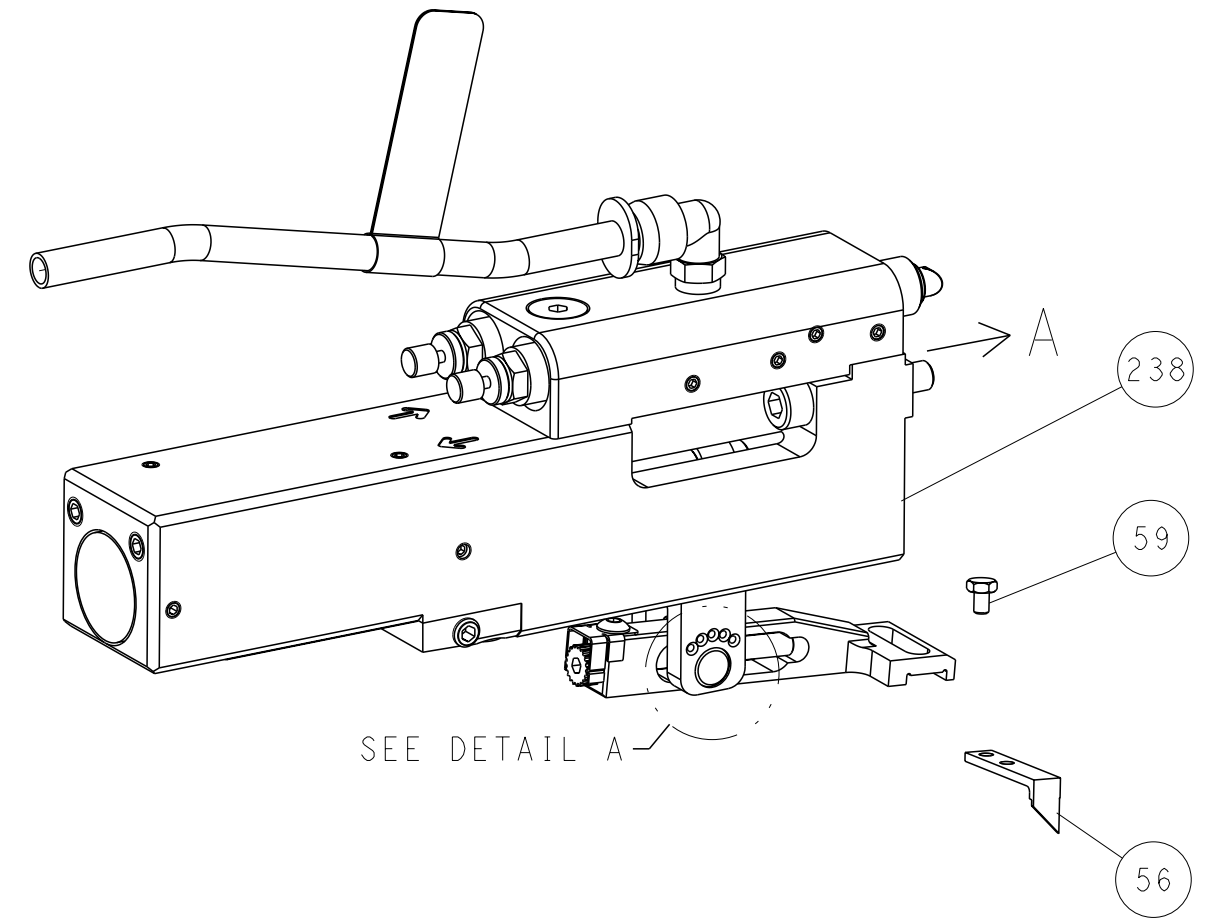
| | | | | | | | |
|-------------|--|--|--|-------------------|--|----------------------------------|---------------|
| DIMENSIONS: | | TOLERANCES UNLESS OTHERWISE SPECIFIED: | | DATE: 19-Sep-13 | | NAME: Ocean Side Feed Applicator | RESTRICTED TO |
| mm | | 0 PLC ± | | DWG: R. KNEPPER | | | |
| | | 1 PLC ± | | CHK: G. BAILEY | | SCALE: 1:2 | |
| | | 2 PLC ± | | APVD: M. CLIFFORD | | SHEET 1 of 4 | |
| | | 3 PLC ± | | PRODUCT SPEC | | REV: C1 | |
| | | 4 PLC ± | | APPLICATION SPEC | | | |
| MATERIAL: | | FINISH: | | WEIGHT: | | | |

| LOC | DIST | REVISIONS | | | |
|-----|------|-------------|------|-----|------|
| A | 66 | REV | DATE | OWN | APVD |
| - | - | SEE SHEET 1 | - | - | - |
| | | | | | |
| | | | | | |

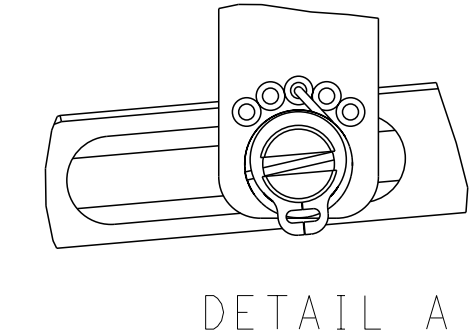
FEED TYPE MECHANICAL



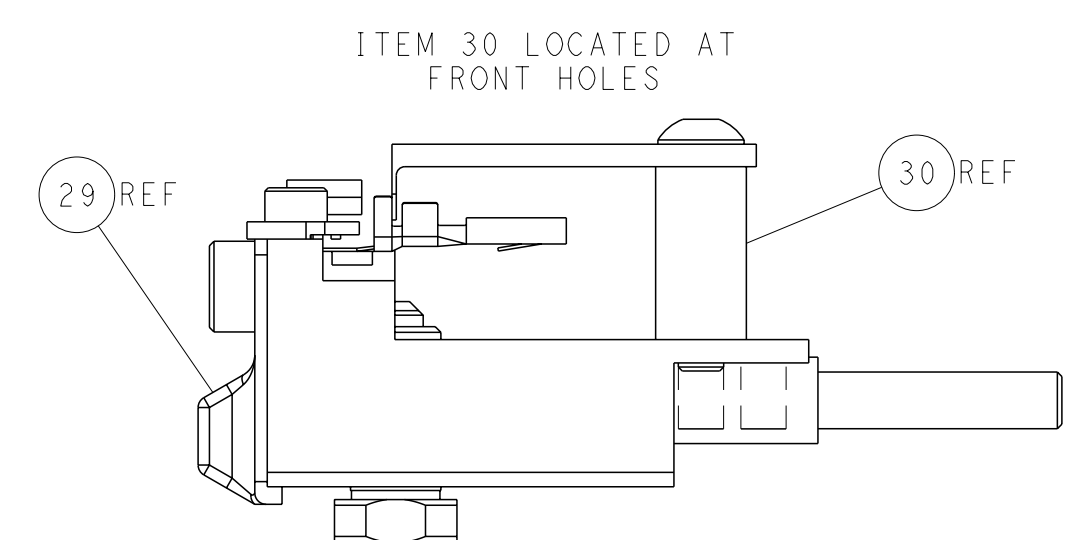
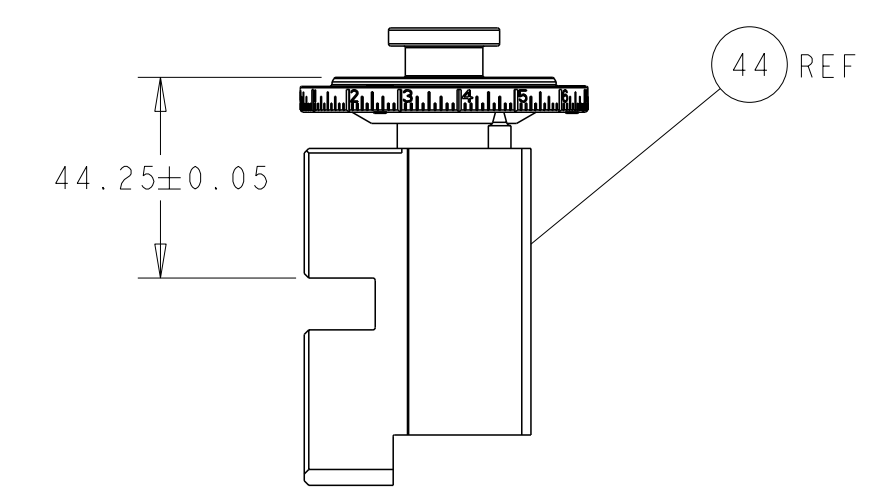
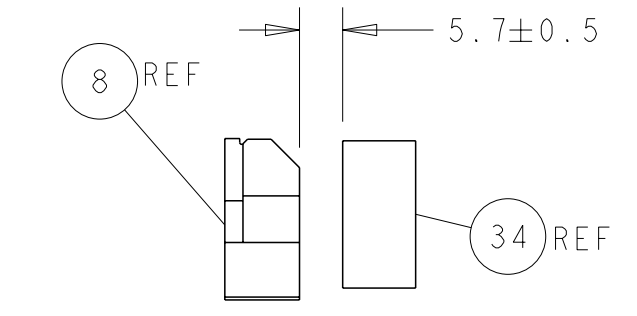
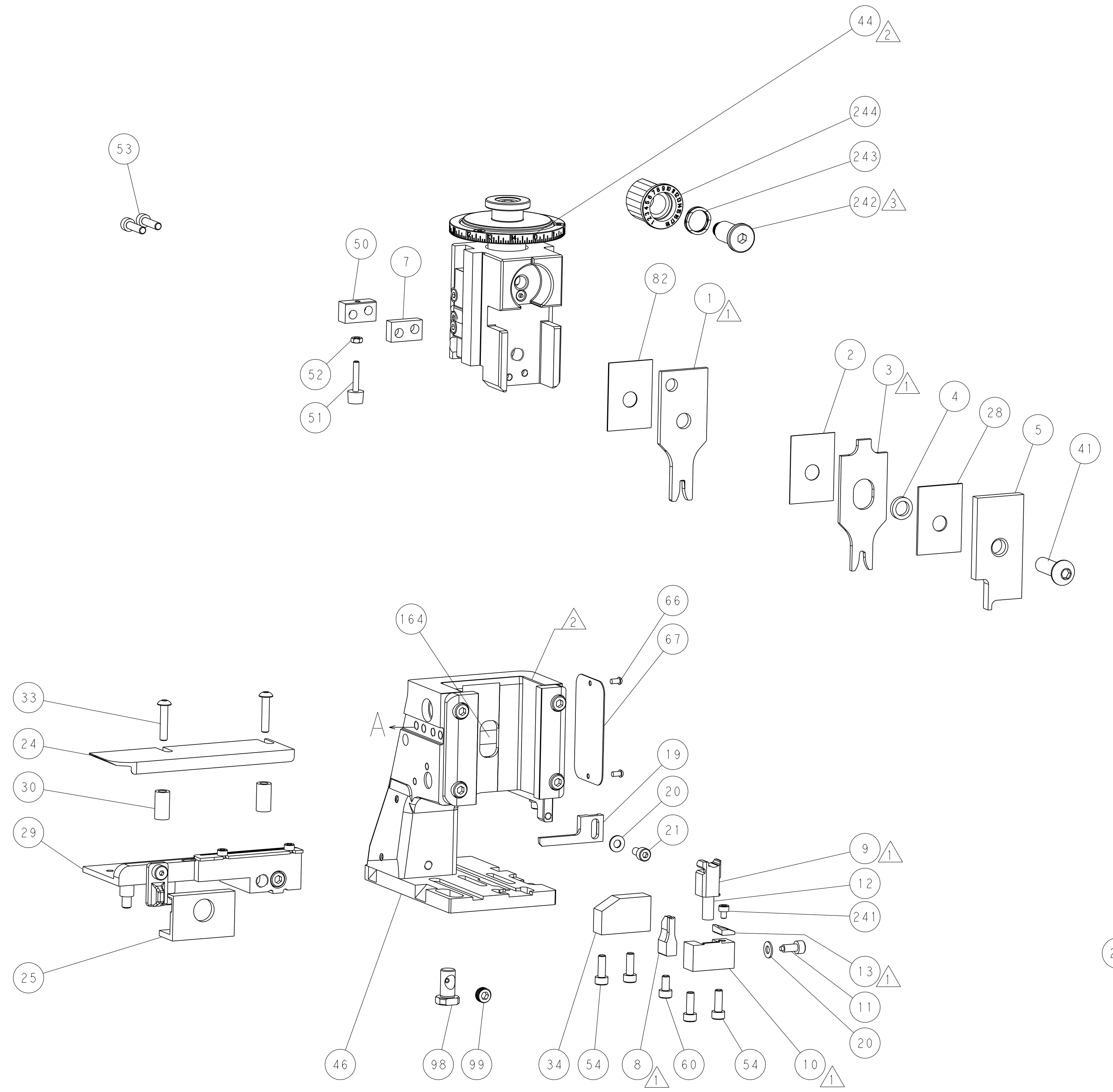
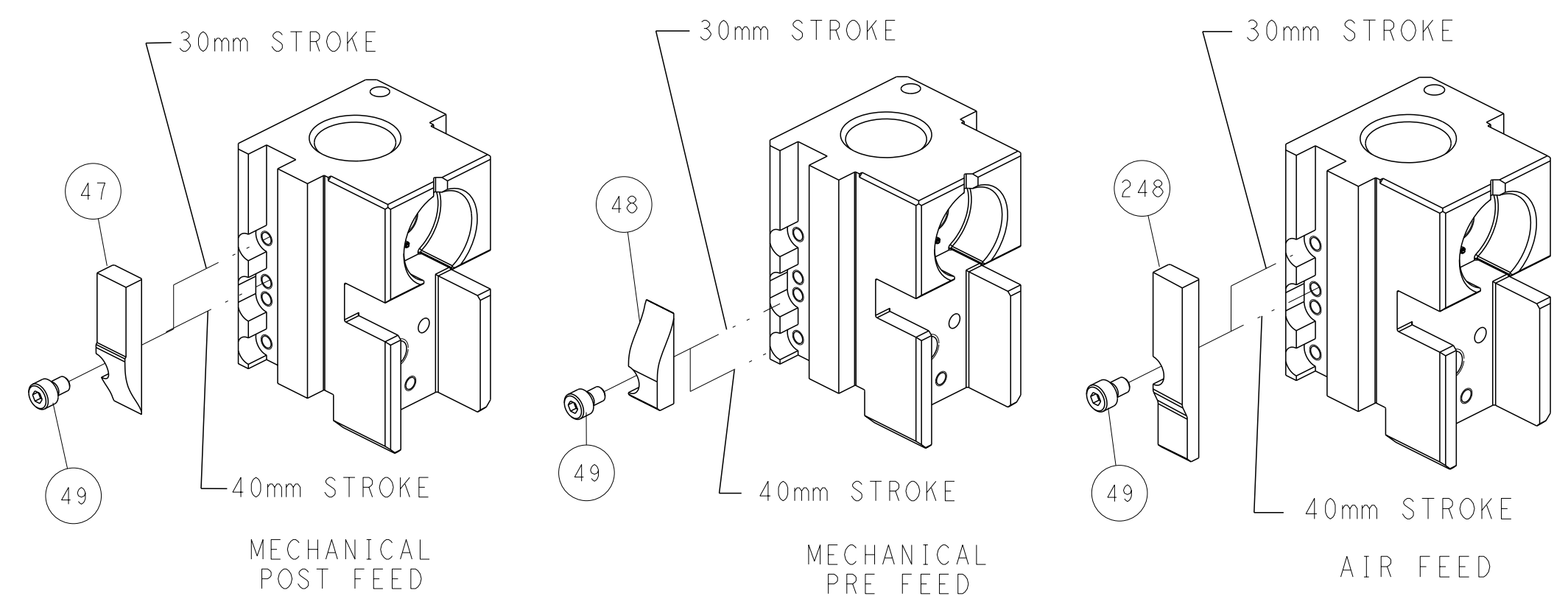
PNEUMATIC



FEED SPRING SETTING POSITION (SHOWN FROM REAR SIDE)



CAM POSITIONS

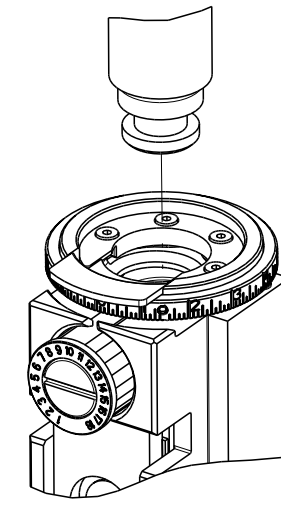


ATLANTIC VERSION
 Shown on sheets 1 of 4 & 2 of 4
 (Pacific version shown on sheets 3 of 4 & 4 of 4)

| | | | | |
|--|-----------|--|---|--|
| <small>THIS DRAWING IS A CONTROLLED DOCUMENT FOR TYCO ELECTRONICS CORPORATION. IT IS SUBJECT TO CHANGE AND THE CONTROLLING ORGANIZATION SHOULD BE CONTACTED FOR THE LATEST REVISION.</small> | | OWN: R. KNEPPER 19-Sep-13 CHK: G. BAILEY 19-Sep-13 APVD: M. CLIFFORD 19-Sep-13 | NAME: Ocean Side Feed Applicator SIZE: A1 CAGE CODE: 00779 DRAWING NO: 2151505 SCALE: 1:2 | TE Connectivity Harrisburg, PA 17105-3608 |
| DIMENSIONS: mm TOLERANCES UNLESS OTHERWISE SPECIFIED: 0 PLC ± 1 PLC ± 2 PLC ± 3 PLC ± 4 PLC ± ANGLES ± | MATERIAL: | WEIGHT: | RESTRICTED TO: | |
| Customer Accessible Production Drawing | | SCALE: 1:2 | SHEET 2 OF 4 REV C1 | |

| PART NUMBER | REVISION | DESCRIPTION | FEED TYPE |
|-------------|----------|--------------------------|------------|
| 2-2151505-1 | B | FINE CRIMP HEIGHT ADJUST | MECHANICAL |
| 2-2151505-2 | C | FINE CRIMP HEIGHT ADJUST | PNEUMATIC |
| 7-2151505-7 | A | CRIMP TOOLING KIT | - |

PACIFIC VERSION TERMINATOR
INTERFACE ADAPTER



| APPLICATOR DATA | | |
|-----------------|----------------|------|
| CRIMP | SIZE | TYPE |
| WIRE | 2.64 mm [.104] | F |
| INSUL | 3.51 mm [.138] | OV |

APPLICATOR INSTRUCTIONS
408-35042

| TERMINAL DATA: KOSTAL TERMINAL KOSTAL CRIMP SPECIFICATION | | | |
|---|------------------------------|-------------|-----------------|
| TERMINAL NAME: TERMINAL KOSTAL SLK2.8 | | | |
| WIRE STRIP LENGTH | INSULATION DIAMETER RANGE | | |
| 3.80-4.40 mm [.150-.173 IN] | Ø1.90-2.70 mm [.075-.106 IN] | | |
| TERMINAL APPLICATION SPECIFICATION DOC00074173 Rev 07 | | | |
| TERMINALS APPLIED | | | |
| TE TERMINAL | KOSTAL TERMINAL | TE TERMINAL | KOSTAL TERMINAL |
| 1572728-1 | 1 01 40 49910 0 | 2113379-1 | 2 21 24 47298 0 |
| 1572728-2 | 1 01 24 49910 0 | 2113379-2 | 2 21 25 47298 0 |
| 1572728-3 | 1 01 25 49910 0 | 2113379-3 | 2 21 40 47298 0 |

| TERMINAL DATA: KOSTAL TERMINAL KOSTAL CRIMP SPECIFICATION | | | |
|---|------------------------------|-------------|-----------------|
| TERMINAL NAME: TERMINAL KOSTAL SLK2.8 | | | |
| WIRE STRIP LENGTH | INSULATION DIAMETER RANGE | | |
| 3.80-4.40 mm [.150-.173 IN] | Ø2.50-3.00 mm [.098-.118 IN] | | |
| TERMINAL APPLICATION SPECIFICATION DOC00074173 Rev 07 | | | |
| TERMINALS APPLIED | | | |
| TE TERMINAL | KOSTAL TERMINAL | TE TERMINAL | KOSTAL TERMINAL |
| 1572728-4 | 1 01 40 49910 5 | 2113379-4 | 2 21 40 47298 5 |
| 1572728-5 | 1 01 24 49910 5 | 2113379-5 | 2 21 24 47298 5 |
| 1572728-6 | 1 01 25 49910 5 | 2113379-6 | 2 21 25 47298 5 |

| WIRE SIZE | CRIMP HEIGHT mm [INCH] | CRIMP HEIGHT REFERENCE SETTING |
|-----------|----------------------------|--------------------------------|
| 14 AWG | 1.57+/-0.03 [.062+/-0.001] | 5.9 |
| 1.50mm2 | 1.47+/-0.03 [.058+/-0.001] | 6.9 |
| 16 AWG | 1.39+/-0.03 [.055+/-0.001] | 7.8 |

| WIRE SIZE | CRIMP HEIGHT mm [INCH] | CRIMP HEIGHT REFERENCE SETTING |
|-----------|----------------------------|--------------------------------|
| 2.50mm2 | 1.75+/-0.03 [.069+/-0.001] | 4.2 |
| 2.00mm2 | 1.65+/-0.03 [.065+/-0.001] | 5.2 |



- ▲ RECOMMENDED SPARE PARTS
- ▲ REFER TO SUPPLIED INSTRUCTION SHEET FOR CLEANING, LUBRICATION AND STORAGE OF APPLICATOR.
- ▲ APPLY PART NUMBER 2-23419-6 LOCTITE TO THREADS OF ITEM 242.
- ▲ CRIMP HEIGHT REFERENCE SETTING WAS THE SETTING USED WHEN THE APPLICATOR WAS QUALIFIED AT THE FACTORY. ADJUSTMENT MAY BE NECESSARY WHEN RUNNING APPLICATOR IN THE FIELD.
- 5. UNLESS SPECIFIED OTHERWISE TORQUE VALUES SHALL BE USED PER DOCUMENT, 101-35000.

***WARNING**
ON INSTALLATION, SET WIRE DISC TO CRIMP HEIGHT REFERENCE SETTING FOR LARGEST WIRE SIZE. CRIMP HEIGHT REFERENCE SETTINGS GREATER THAN THE VALUE SHOWN MAY CAUSE DAMAGE TO THE CRIMP TOOLING, REFER TO THE INSTRUCTION SHEET FOR PROPER SETUP AND ADJUSTMENTS.

PACIFIC VERSION
Shown on sheets 3 of 4 & 4 of 4
(Atlantic version shown on sheets 1 of 4 & 2 of 4)

| LOC | DIST | REV | DATE | BY | APPV |
|-----|------|-----|------|----|------|
| A | 66 | | | | |

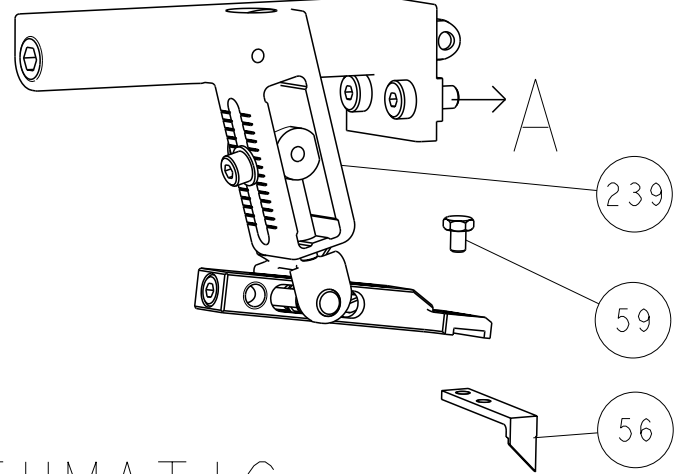
| REV | DATE | DESCRIPTION | ITEM NO |
|-----|---------|---|---------|
| - | 1 1 | 2119082-8 CAM, SNAIL, INSULATION ADJUSTMENT | 244 |
| - | 1 1 | 2079764-1 WASHER, WAVE SPRING, CREST-TO-CREST | 243 |
| 3 | 1 1 | 2119083-1 RETAINER, INSULATION DIAL | 242 |
| - | 1 1 | 7-18023-7 SCR, SKT HD CAP M3 X 4.0 | 241 |
| - | - | 2119580-1 MECHANICAL FEED ASSEMBLY | 239 |
| - | 1 - | 2844940-1 AIR FEED MODULE | 238 |
| - | REF REF | 994970-2 COUNTER, MAGNETIC | 164 |
| - | 1 - | 2119641-2 FEED CAM, AIR FEED | 151 |
| - | 1 1 | 2168083-8 SCR, SKT HD CAP, RoHS, M4 X 16 | 144 |
| - | 4 4 | 2168083-9 SCR, SKT HD CAP, RoHS, M4 X 20 | 143 |
| - | - | 2119653-2 FEED CAM, POST FEED | 142 |
| - | 1 1 | 1-1803583-0 APPLICATOR BASIC ASSEMBLY, SF | 141 |
| - | 1 1 | 1803516-1 RAM ASSEMBLY, SF PACIFIC | 140 |
| - | 1 1 | 2844908-1 SCREW, LOCKING | 99 |
| - | 1 1 | 2844907-1 POST, LOCKING | 98 |
| - | 1 1 | 455888-5 SPACER, CRIMPER | 82 |
| - | 1 1 | 1803607-3 DOCUMENTATION PACKAGE | 71 |
| - | 1 1 | 2119740-1 TAG, IDENTIFICATION | 67 |
| - | 2 2 | 2168078-1 SCREW, DRIVE, RH, RoHS, 2 x .188 | 66 |
| - | 1 1 | 5-18022-5 SCR, HEX HD CAP, M4 X 6.0 | 59 |
| - | 1 1 | 1338685-1 PAWL, FEED | 56 |
| - | 2 2 | 2168083-8 SCR, SKT HD CAP, RoHS, M4 X 16 | 53 |
| - | 1 1 | 5018030-1 NUT, HEX, REG, RoHS, M3 | 52 |
| - | 1 1 | 811242-5 BUMPER, HOLD DOWN | 51 |
| - | 1 1 | 690753-2 SPACER, TONKER | 50 |
| - | 1 2 | 18023-9 SCR, SKT HD CAP M4 X 6.0 | 49 |
| - | - | 2119652-1 FEED CAM, PRE FEED | 48 |
| - | 1 1 | 1803602-1 SCR, BHSC, RoHS (M8 X 25) | 41 |
| - | 1 1 | 1752356-1 SUPPORT, TERMINAL | 34 |
| - | 2 2 | 2079383-5 SCR, BHSC, RoHS (M4 X 20) | 33 |
| - | 2 2 | 3-2844962-0 SPACER, CYLINDRICAL, STRIP GUIDE | 30 |
| - | 1 1 | 2844992-4 ASSEMBLY, STRIP GUIDE | 29 |
| - | 1 1 | 1-455888-0 SPACER, CRIMPER | 28 |
| - | 1 1 | 240792-1 DRAG, TERMINAL | 25 |
| - | 1 1 | 1320928-2 STRIP GUIDE | 24 |
| - | 1 1 | 2168083-2 SCR, SKT HD CAP, RoHS, M4 X 8.0 | 21 |
| - | 2 2 | 1-18028-2 WASHER, FLAT, REG M4 | 20 |
| - | 1 1 | 2119533-1 STRIPPER, SIDE FEED | 19 |
| - | 1 1 | 2119806-1 INSERT, SHEAR | 13 |
| - | 1 1 | 3-22280-3 SPRING, COMPRESSION | 12 |
| - | 1 1 | 1-356885-4 STOP, SHEAR | 11 |
| - | 1 1 | 2119805-1 SHEAR HOLDER, FRONT | 10 |
| - | 1 1 | 318707-1 FLOATING SHEAR, FRONT | 9 |
| 1 | 1 1 | 1803055-2 ANVIL, COMBINATION | 8 |
| - | 1 1 | 1-240641-4 SPACER | 7 |
| - | - | - | 6 |
| - | 1 1 | 2119757-9 DEPRESSOR, SHEAR | 5 |
| - | 1 1 | 1-238011-7 BLOCK, CRIMPER SPACER | 4 |
| 1 | 1 1 | 1-1633963-2 CRIMPER, INSULATION OVERLAP PREMIUM | 3 |
| - | 1 1 | 455888-3 SPACER, CRIMPER | 2 |
| 1 | 1 1 | 9-1633305-1 CRIMPER, WIRE PREMIUM | 1 |

| DIMENSIONS: | | TOLERANCES UNLESS OTHERWISE SPECIFIED: | | APPLICATOR DATA | |
|-------------|---------|--|----------|-----------------|---------|
| mm | 0 PLC ± | 1 PLC ± | 2 PLC ± | 3 PLC ± | 4 PLC ± |
| | ANGLES | FINISH | MATERIAL | | |

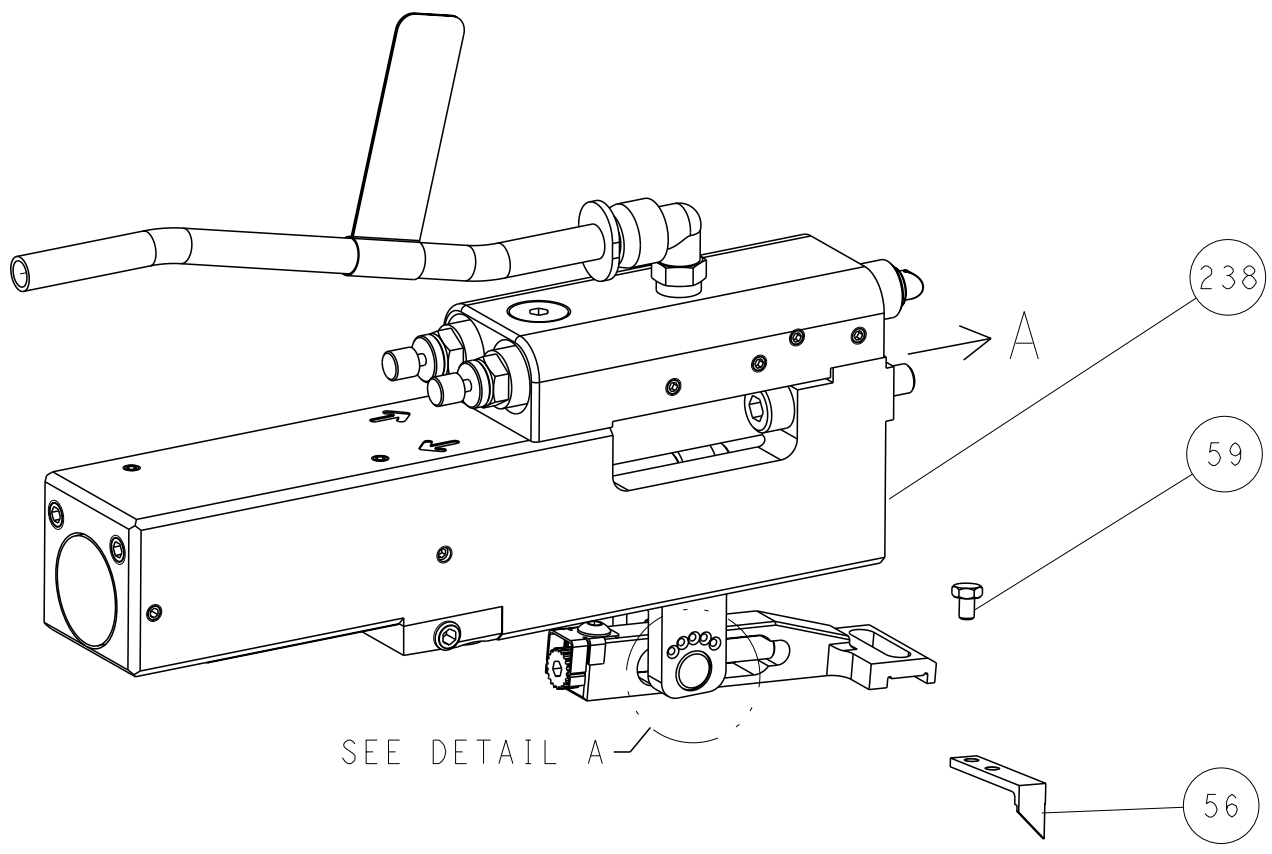
| | | |
|--|----------------------------|--------------|
| OWN | R. KNEPPER | 19-Sep-13 |
| CHK | G. BAILEY | 19-Sep-13 |
| APVD | M. CLIFFORD | 19-Sep-13 |
| NAME | Ocean Side Feed Applicator | |
| SIZE | CAGE CODE | DRAWING NO |
| A1 | 00779 | 2151505 |
| Customer Accessible Production Drawing | | |
| SCALE | 1:2 | SHEET 3 of 4 |
| REV | C1 | |

| LOC | | DIST | | REVISIONS | | | |
|-----|----|------|-----|-------------|------|-----|------|
| A | 66 | P | LYR | DESCRIPTION | DATE | OWN | APVD |
| | | - | | SEE SHEET 1 | | | |

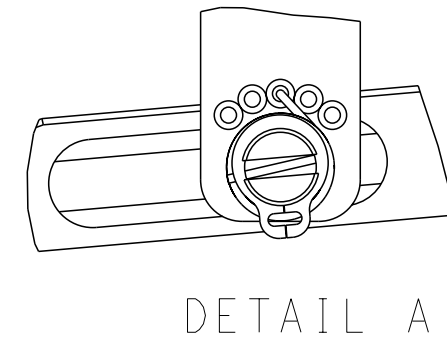
FEED TYPE MECHANICAL



PNEUMATIC

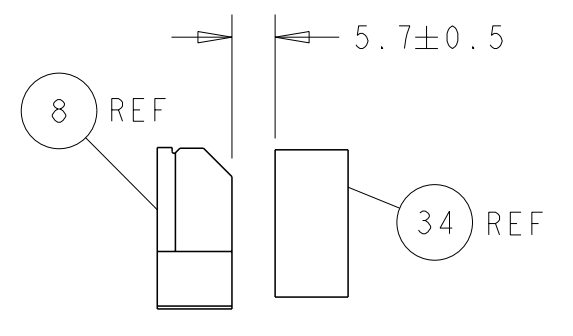
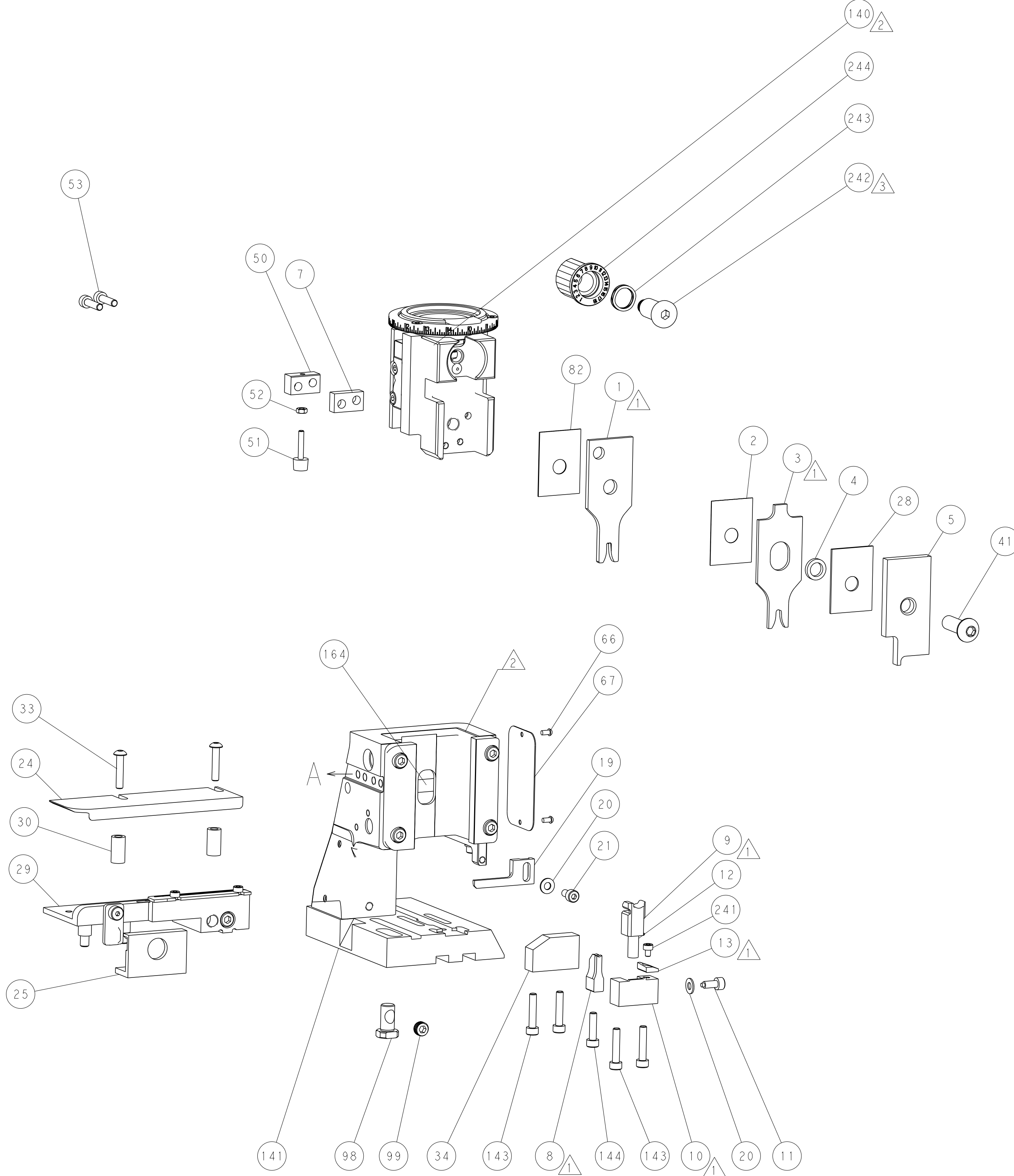
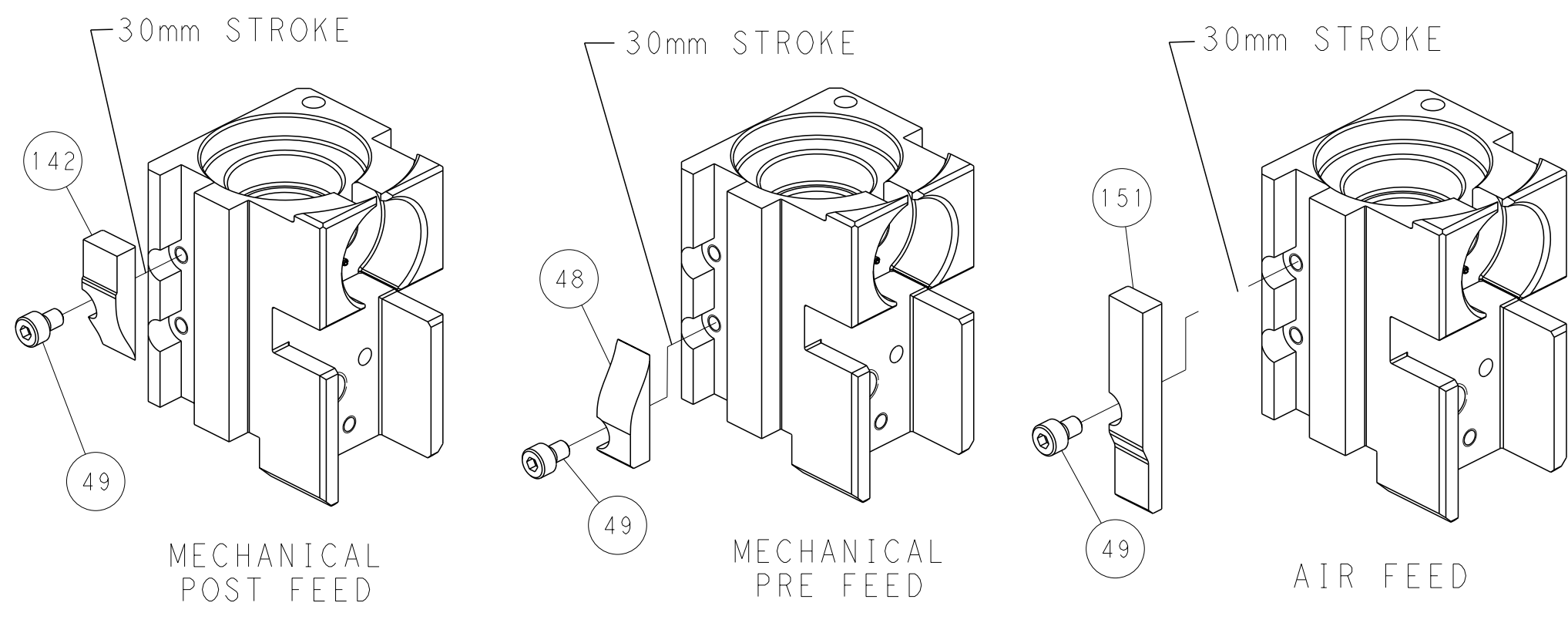


FEED SPRING SETTING POSITION (SHOWN FROM REAR SIDE)

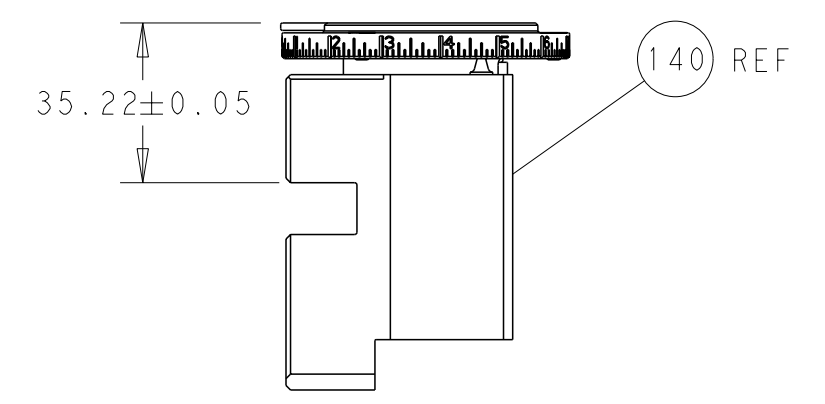


DETAIL A

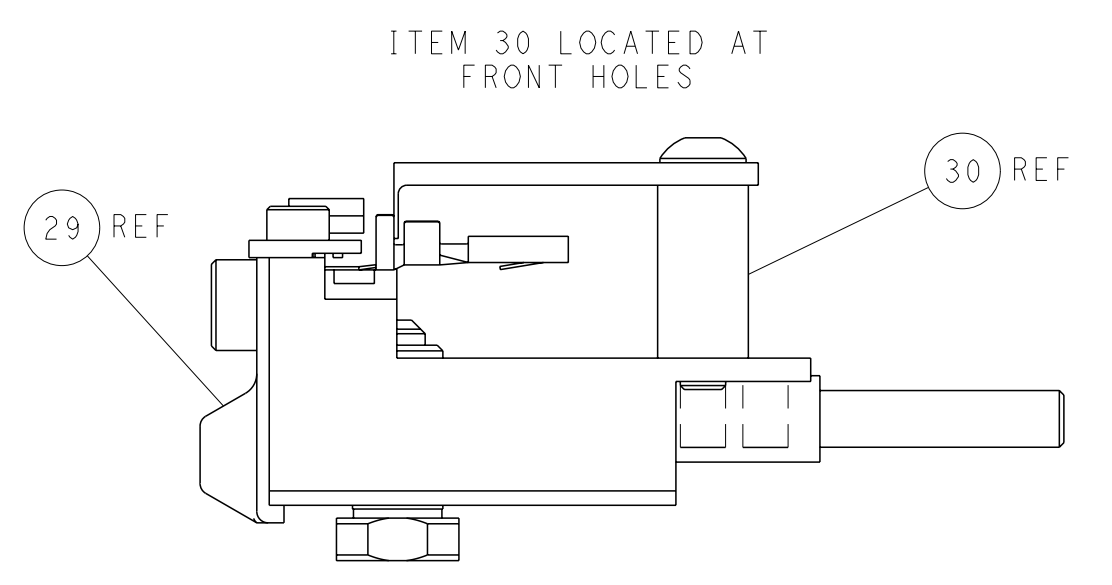
CAM POSITIONS



TERMINAL SUPPORT LOCATION



RAM SET-UP



FEED TRACK POSITION GUIDE BY INSULATION BARREL

PACIFIC VERSION
 Shown on sheets 3 of 4 & 4 of 4
 (Atlantic version shown on sheets 1 of 4 & 2 of 4)

| | | | | |
|--|--|--|---|--|
| <small>THIS DRAWING IS A CONTROLLED DOCUMENT FOR TYCO ELECTRONICS CORPORATION. IT IS SUBJECT TO CHANGE AND THE CONTROLLING ENGINEERING ORGANIZATION SHOULD BE CONTACTED FOR THE LATEST REVISION.</small> | | OWN: R. KNEPPER 19-Sep-13 CHK: G. BAILEY 19-Sep-13 APVD: M. CLIFFORD 19-Sep-13 PRODUCT SPEC: - APPLICATION SPEC: - WEIGHT: - MATERIAL: - | NAME: Ocean Side Feed Applicator SIZE: A1 CAGE CODE: 00779 DRAWING NO: 2151505 SCALE: 1:2 SHEET: 4 of 4 REV: C1 | TE Connectivity Harrisburg, PA 17105-3608 |
|--|--|--|---|--|