



Electrical specifications

Center Frequency: 5885 MHz
Bandwidth: 20 MHz
Input / Output Impedance: 50 Ohms
Passband: 5875-5895 MHz
Passband Insertion Loss: 2.0 dB @ 5875-5895 MHz
IL Variation: 0.75 dB
Passband Ripple: <0.2 dB
Passband Return Loss: >14 dB
Rejection: DC-(CF-20)MHz, 60 dBc
Rejection 2: (CF+20)MHz -6200 MHz 60 dBc
Power Handling: 50 W
Group Delay Variation: 200ns over any 0.5 MHz

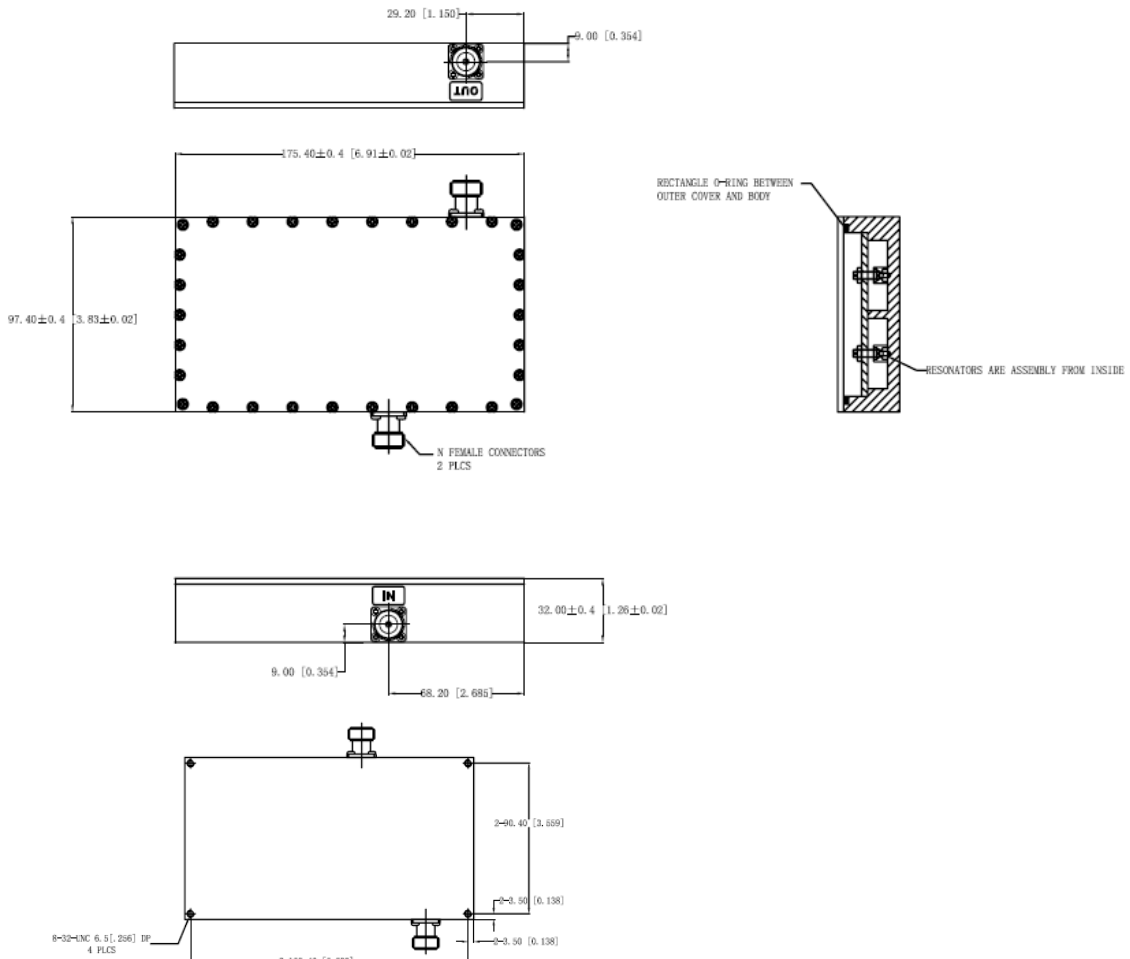
Mechanical

Mounting Method: Threaded Mounting Holes
Connector Type: N-Type Female
Dimensions: 6.93" x 3.86" x 1.26"
 (176mm x 98mm x 32mm)

Environmental

Operating Temperature: -30 to +60° C
Storage Temperature: -55 to +95° C
Shock: 20 G. 11ms
Vibration: 20 G. 5 to 200 MHz

Outline Drawing:





5885 MHz Cavity Bandpass Filter

Part Number: AB5885B1306



Plot:

