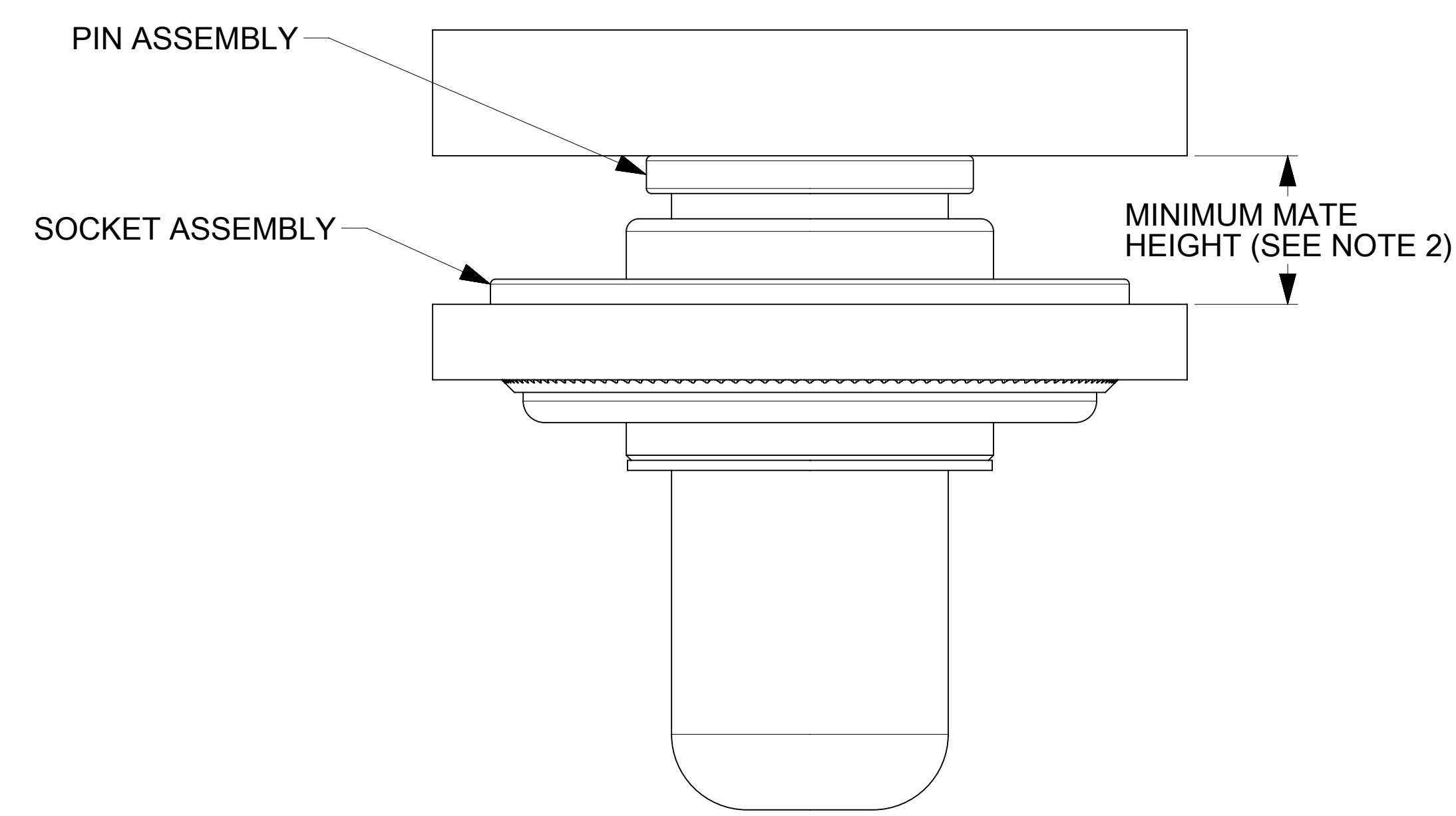
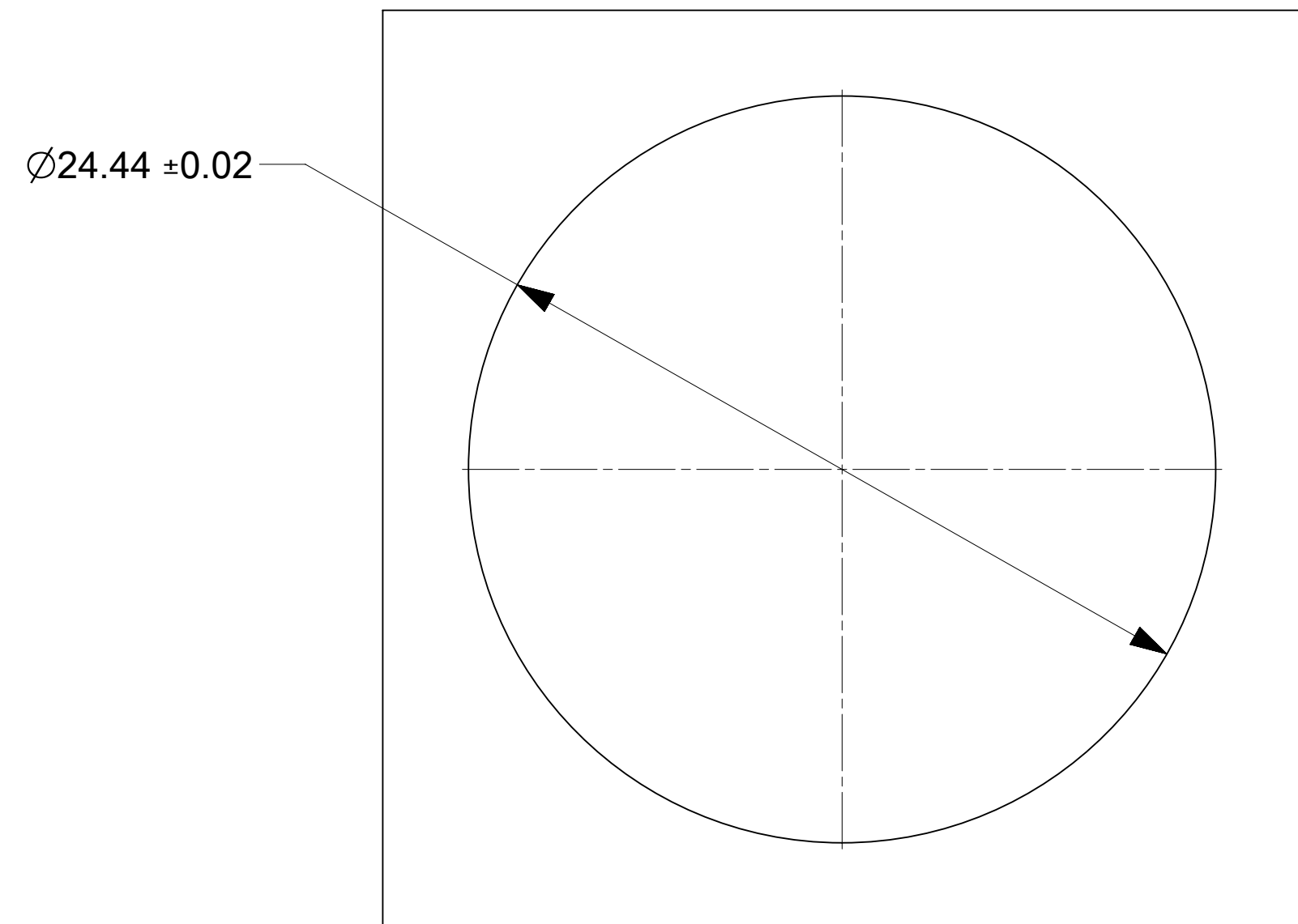
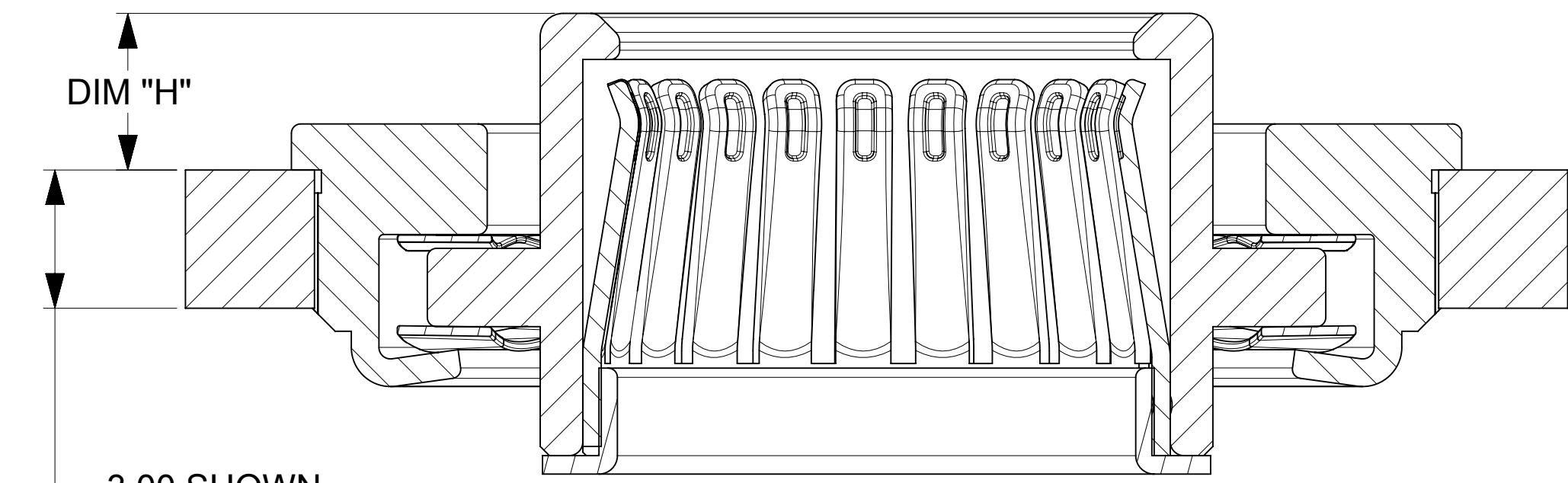
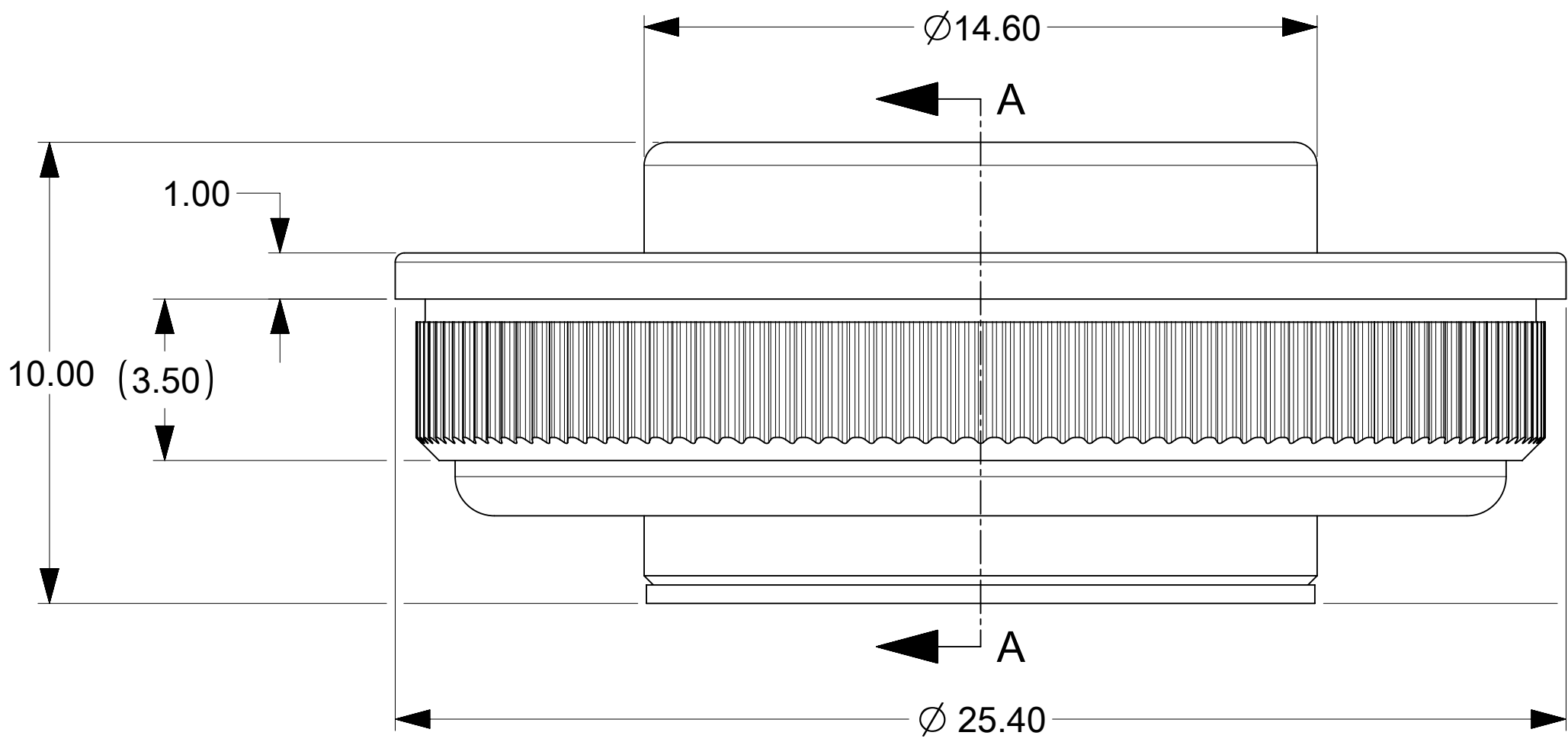
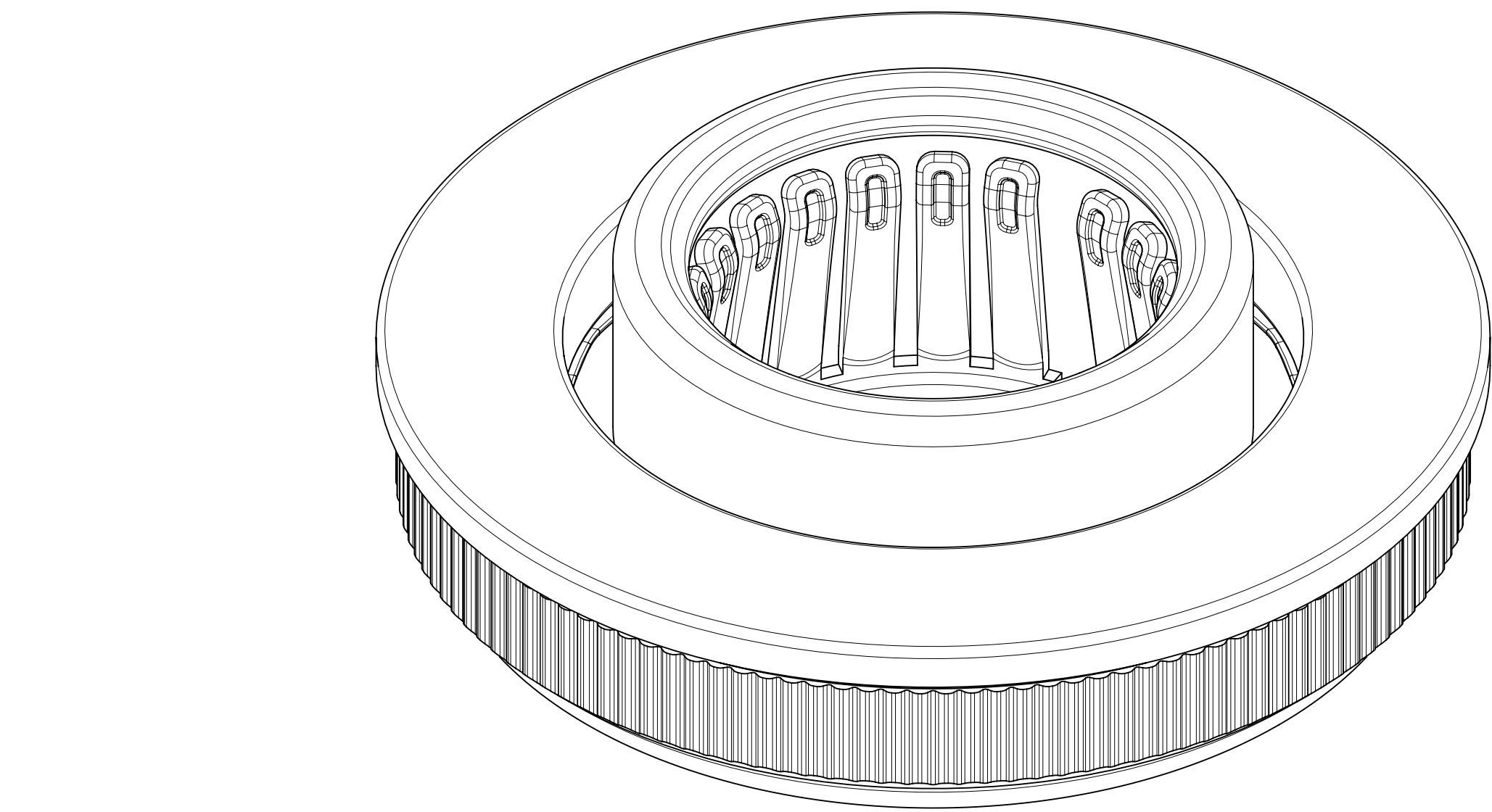


|             |           |      |
|-------------|-----------|------|
| PART NUMBER | DIM "H"   | NOTE |
| 213680-0001 | 3.40± 0.3 | N/A  |

### RECOMMENDED DRILL (ON BUSBAR)

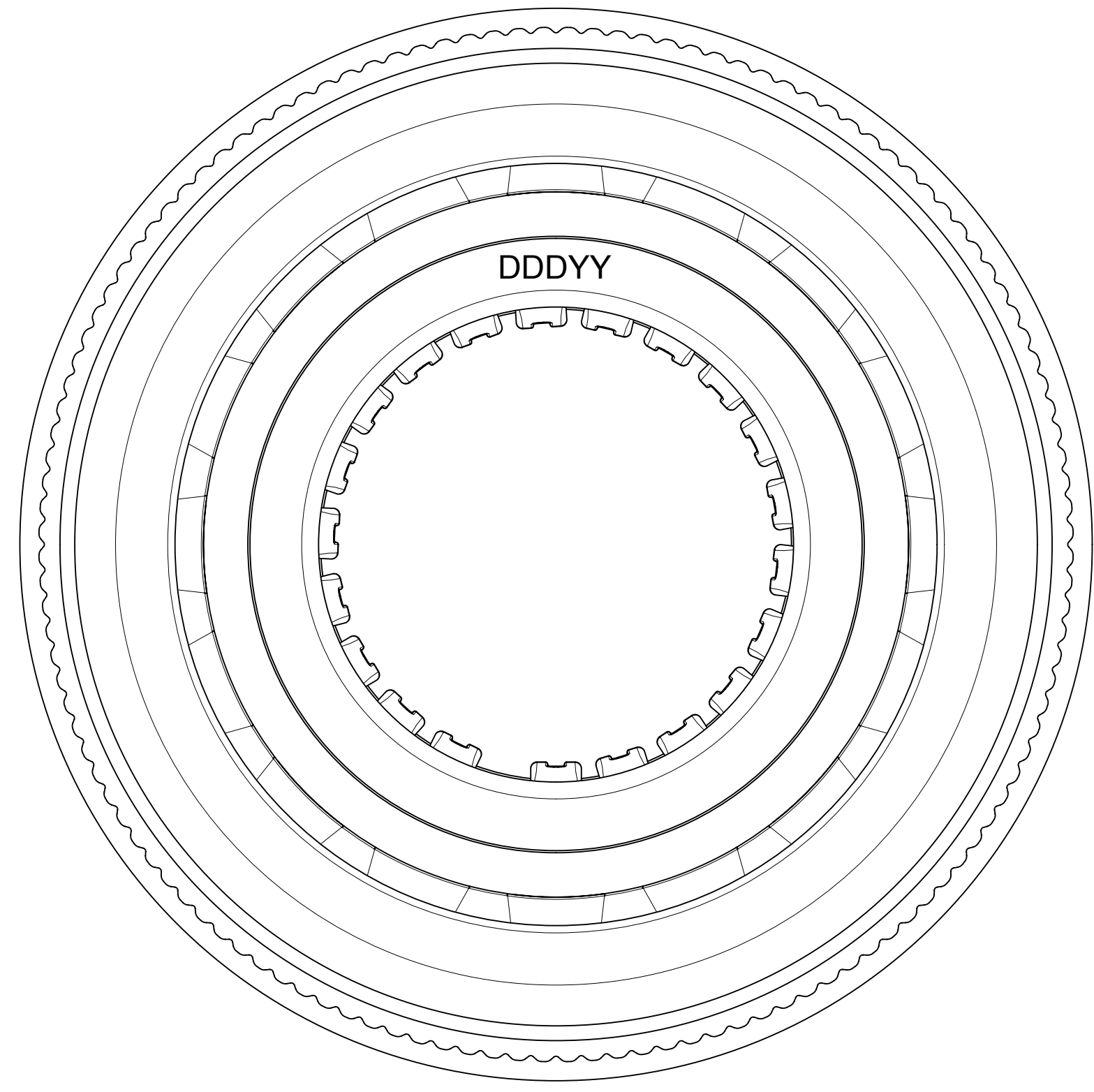


### MATING PROFILE



### SECTION A-A

- NOTES:**
- MATERIALS:**  
RETENTION CAP: STAINLESS STEEL  
PICK AND PLACE CAP: LCP UL94, V-0 COLOR BLACK  
BASE METAL: HIGH CONDUCTIVE COPPER ALLOY  
PLATING ON CONTACTS: 0.75 MICRON MIN GOLD OVER 1.27 MICRON MIN NICKEL  
PLATING ON BODY: 3.18 MICRON MIN SILVER OVER 1.27 MICRON MIN NICKEL
  - MATES WITH MOLEX 11MM MALE PIN:**
    - 11.0MM SMT MALE PIN DRAWING 213901-0000-SD, MIN. MATING DISTANCE 5.55MM
    - 11.0MM PRESS FIT MALE PIN DRAWING 213900-0000-SD, MIN. MATING DISTANCE 5.90MM
    - 11.0MM SCREW MOUNT MALE PIN DRAWING 213902-0000-SD, MIN. MATING DISTANCE 8.9MM
  - PRODUCT SPECIFICATION:** 2138800001-PS
  - APPLICATION SPECIFICATION:** 2138800001-AS  
SEE APPLICATION SPEC FOR SOLDERING INFORMATION.
  - PACKAGING SPECIFICATION:** 2136800001-PK(TRAY PACKAGING)
  - SILVER COMPONENTS WILL BE SUPPLIED TARNISH FREE BUT MAY TARNISH OVER TIME.
  - PICK AND PLACE CAP TO BE REMOVED AFTER SOLDERING. CAP TO BE PUSHED OUT OF BOTTOM FROM THE TOP.



|   |        |  |               |        |                 |                |                 |  |          |          |          |
|---|--------|--|---------------|--------|-----------------|----------------|-----------------|--|----------|----------|----------|
| THIS DRAWING CONTAINS INFORMATION THAT IS PROPRIETARY TO MOLEX ELECTRONIC TECHNOLOGIES, LLC AND SHOULD NOT BE USED WITHOUT WRITTEN PERMISSION |        |  |               |        |                 |                |                 |  |          |          |          |
| DIMENSION UNITS   | SCALE  | CURRENT REV DESC: UPDATED THE TITLE BLOCK  |               |        |                 |                |                 |  |          |          |          |
| mm  | NTS    | <div style="text-align: right; font-weight: bold; font-size: 24pt;">molex</div><br>11.0MM SENTRALITY TOP ENTRY PRESS-FIT SOCKET WITH FLOAT IN TRAY<br><br>PRODUCT CUSTOMER DRAWING |               |        |                 |                |                 |  |          |          |          |
| GENERAL TOLERANCES (UNLESS SPECIFIED)   |        |  |               |        |                 |                |                 |  |          |          |          |
| ANGULAR TOL   | ± 0.5° |  |               |        |                 |                |                 |  |          |          |          |
| 4 PLACES  | ±      |  |               |        |                 |                |                 |  |          |          |          |
| 3 PLACES  | ±      |  |               |        |                 |                |                 |  |          |          |          |
| 2 PLACES  | ± 0.15 |  |               |        |                 |                |                 |  |          |          |          |
| 1 PLACE   | ± 0.25 | EC NO: 747243  | DRWN: SACHIK7 |        | 2023/02/28      |                | DOCUMENT NUMBER |  | DOC TYPE | DOC PART | REVISION |
| 0 PLACES  | ±      | CHK'D: SCS02   | 2023/04/25    |        | 2020/08/24      |                | 2136800001-SD   |  | PSD      | 000      | A3       |
| DRAFT WHERE APPLICABLE MUST REMAIN WITHIN DIMENSIONS  |        | THIRD ANGLE PROJECTION   | DRAWING       | SERIES | MATERIAL NUMBER | CUSTOMER       | SHEET NUMBER    |  |          |          |          |
|   |        |  | D-SIZE        | 213680 | SEE CHART       | GENERAL MARKET | 1 OF 1          |  |          |          |          |

|                 |    |              |            |          |
|-----------------|----|--------------|------------|----------|
| DOCUMENT STATUS | P1 | RELEASE DATE | 2023/05/08 | 05:39:02 |
|-----------------|----|--------------|------------|----------|