

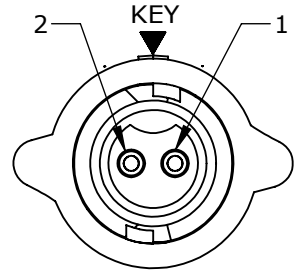
APPROVED BY: DATE: QA APPROVED BY: DATE:

ASS'Y P/N	CONTACT QTY.	CABLE O.D. RANGE
W16280-2PG-P-311	2	0.09 - 0.14 [2.3 - 3.6]
W16280-2PG-P-315	2	0.15 - 0.17 [3.8 - 4.3]
W16280-2PG-P-318	2	0.18 - 0.20 [4.6 - 5.1]
W16280-3PG-P-311	3	0.09 - 0.14 [2.3 - 3.6]
W16280-3PG-P-315	3	0.15 - 0.17 [3.8 - 4.3]
W16280-3PG-P-318	3	0.18 - 0.20 [4.6 - 5.1]
W16280-XPG-P-3XX		

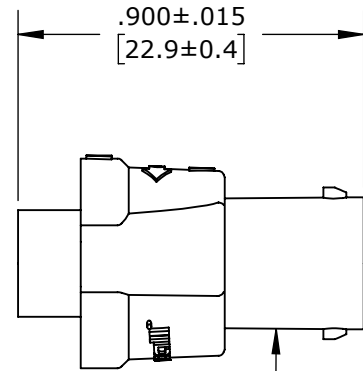
NOTES:

1. ALL PARTS ARE BULK PACKED.
2. REFER TO DRAWING HPMCSTD FOR CONTACT PATTERNS.
3. ALL DIMENSIONS ARE REFERENCE ONLY IN INCHES [mm], WITHIN ±0.015 UNLESS OTHERWISE NOTED.

GROMMET SIZE = CABLE O.D. RANGE:  
 311 = 0.09 - 0.14 [2.3 - 3.6]  
 315 = 0.15 - 0.17 [3.8 - 4.3]  
 318 = 0.18 - 0.20 [4.6 - 5.1]

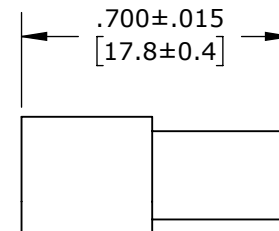


**FACE VIEW**  
W16280-2PG-P-3XX

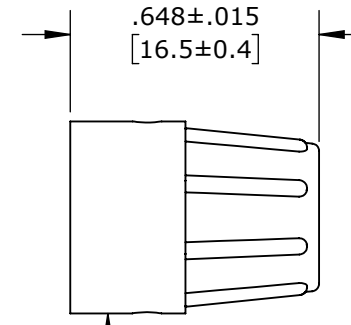


CABLE-END ASSEMBLY KIT  
 MAT'L: HOUSING -THERMOPLASTIC, BLACK  
 O-RING - SILICONE, RED  
 COUPLING RING - THERMOPLASTIC, BLACK  
 SPRING (INTERNAL) - STAINLESS STEEL

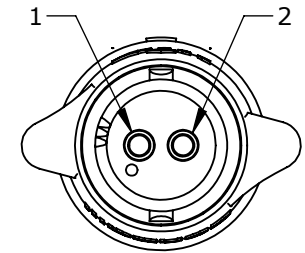
(2-3) # 20 PIN CONTACTS  
 CRIMP TAIL  
 MAT'L: GOLD PLATED, COPPER ALLOY



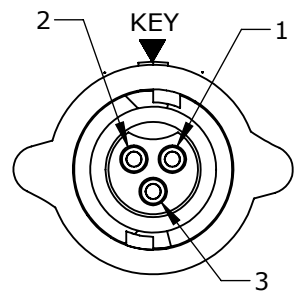
GROMMET  
 MAT'L: ELASTOMER, BLACK  
 SEE TABLE FOR CABLE O.D. SIZE OPTIONS



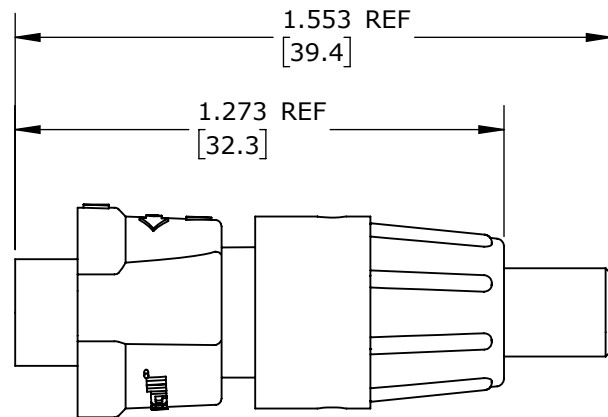
# OF CONTACTS  
 BACKSHELL  
 MAT'L: THERMOPLASTIC, BLACK



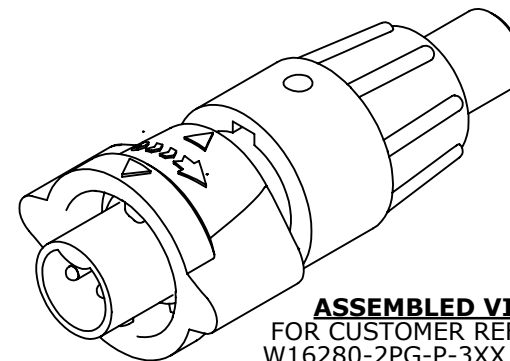
**WIRING VIEW**  
W16280-2PG-P-3XX



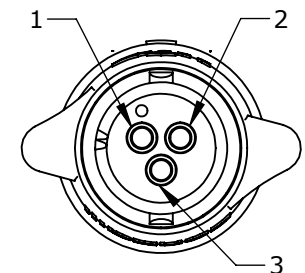
**FACE VIEW**  
W16280-3PG-P-3XX



**ASSEMBLED VIEW**  
FOR CUSTOMER REF. ONLY



**ASSEMBLED VIEW**  
FOR CUSTOMER REF. ONLY  
W16280-2PG-P-3XX SHOWN



**WIRING VIEW**  
W16280-3PG-P-3XX

CUSTOMER PRINT

PART NUMBER: W16280-XPG-P-3XX

CUSTOMER APPROVAL

THIS DOCUMENT CONTAINS CONFIDENTIAL INFORMATION PROPRIETARY TO CONXALL CORPORATION. ANY REPRODUCTION, DISCLOSURE, OR USE OF THIS DOCUMENT / INFORMATION IS EXPRESSLY PROHIBITED UNLESS AUTHORIZED IN WRITING BY CONXALL CORPORATION.

APPROVED BY: \_\_\_\_\_  
 DATE: \_\_\_\_\_

**RoHS COMPLIANT**

**PRELIMINARY**

DIMENSIONS IS BRACKETS [] ARE METRIC

0A	JGK	9/05/19	DRAWING CREATED FOR PDR #18004.	
REV.	INIT.	DATE	DESCRIPTION	
	JGK	9/05/19	ORIG. DRAWN BY: DATE: 9/05/19	
ALL INFORMATION ILLUSTRATED IS THE PROPERTY OF CONXALL CORPORATION. UNAUTHORIZED DUPLICATION OR DISTRIBUTION OF THIS DOCUMENT IS PROHIBITED.			 601 E. WILDWOOD VILLA PARK, IL 60181	
ALL UNITS ARE IN FEET, INCHES, FRACTION OF INCHES AND DECIMALS.				
UNLESS OTHERWISE SPECIFIED TOLERANCES: 3 PLACE DECIMALS ±.005 ANGLES ±1° FRACTIONS ±1/16			TITLE: CABLE-END ASSEMBLY 2-3 #20 PIN CONTACTS, CRIMP INSTA-CLICK, MICRO-CON-X STANDARD PRODUCT	
FILE:	SCALE	SIZE	SHEET	CUSTOMER:
W16280-XPG-P-3XX	NTS	B	1 OF 1	W16280-XPG-P-3XX
DIRECTORY: SLW		PART NUMBER:		REV 0A